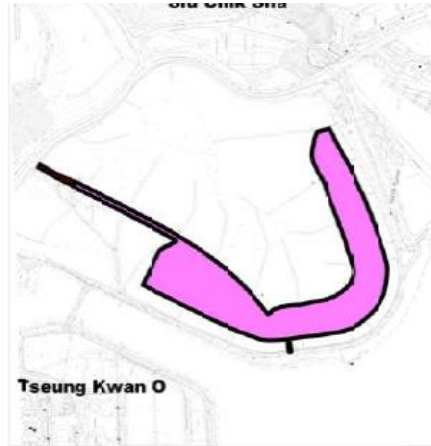


# Jockey Club HKFA Football Training Centre 賽馬會香港足球總會訓練中心



# Site Boundary (Pink)



LICENCE CONDITICNS REFER

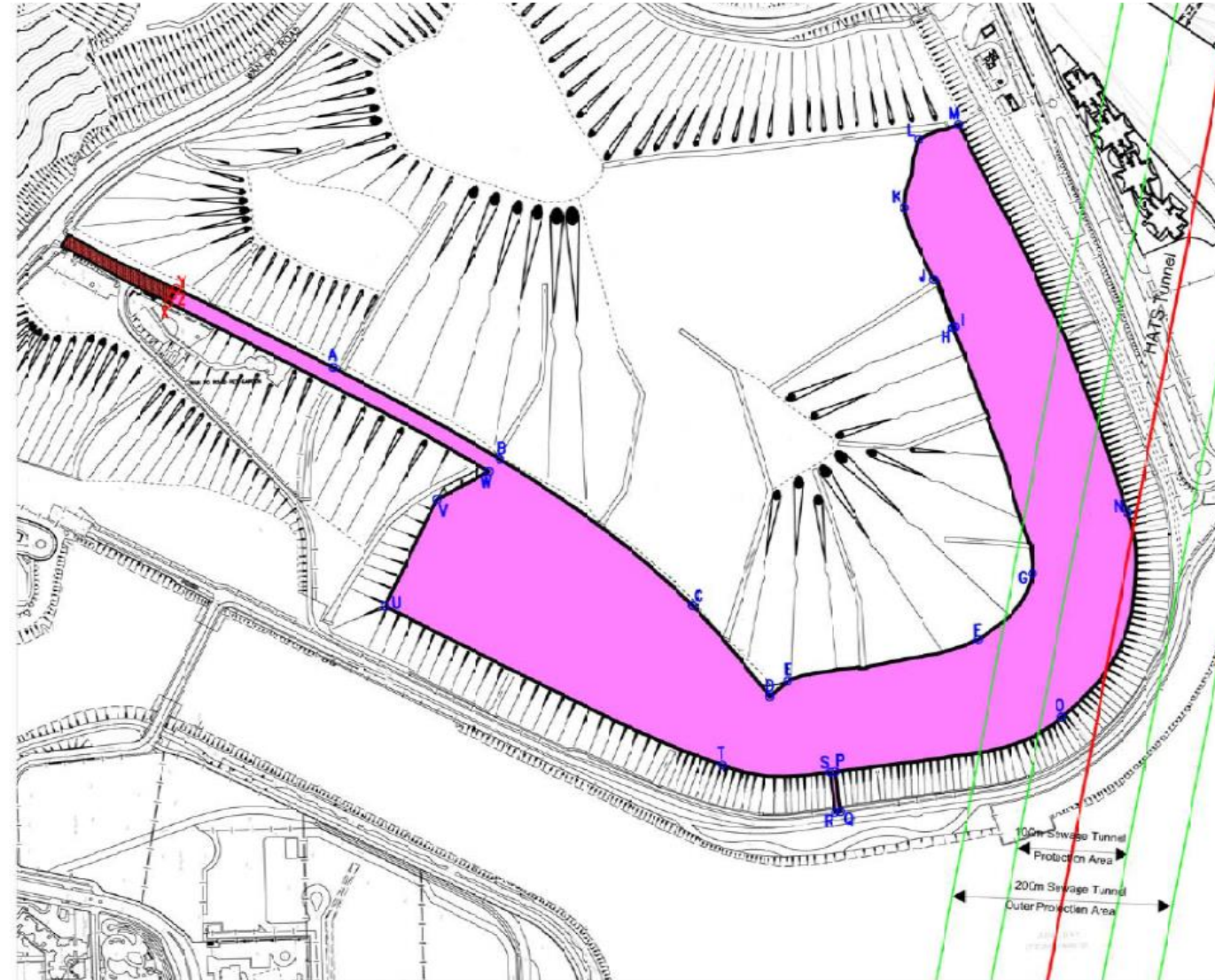
POINTS X, Y & Z



Harbour Area Treatment Scheme (HATS) Tunnel

CO-ORDINATES (FOR REFERENCE ONLY)

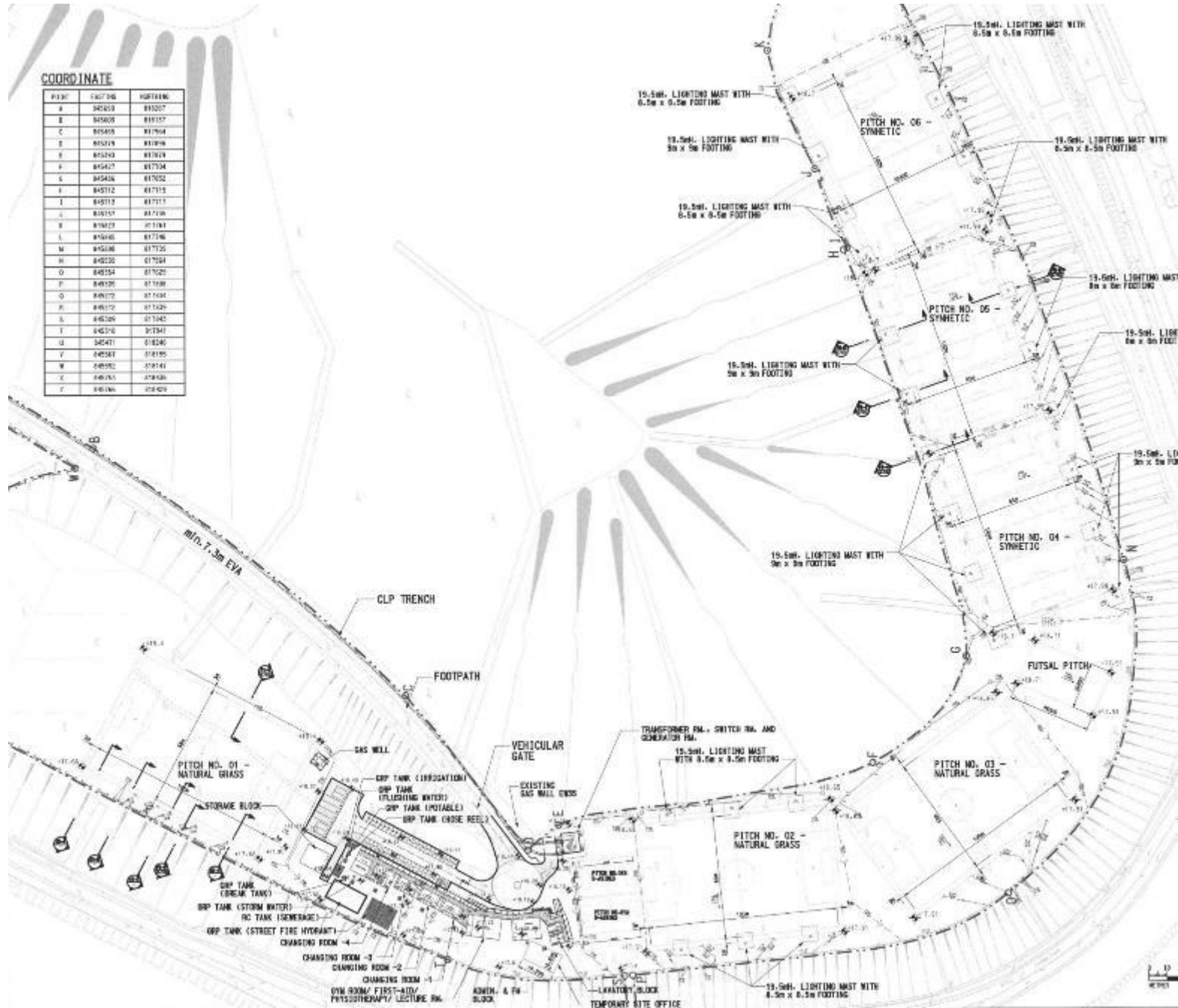
POINTS	EASTING	NORTHING
A	845693	818287
B	845603	818137
C	845465	817964
D	845373	817896
E	845393	817879
F	845427	817704
G	845486	817652
H	845712	817719
I	845713	817717
J	845757	817735
K	845823	817761
L	845885	817746
M	845893	817709
N	845539	817564
O	845354	817629
P	845303	817838
Q	845272	817834
R	845272	817834



COLOURED PINK AREA 124 819 SQUARE METRES (ABOUT)



- Facilities Include:







• Facilities Include:

- 3 Natural Pitches (1 with floodlight) ■
- 3 Artificial Pitches (all with floodlight) ■





## • Facilities Include:

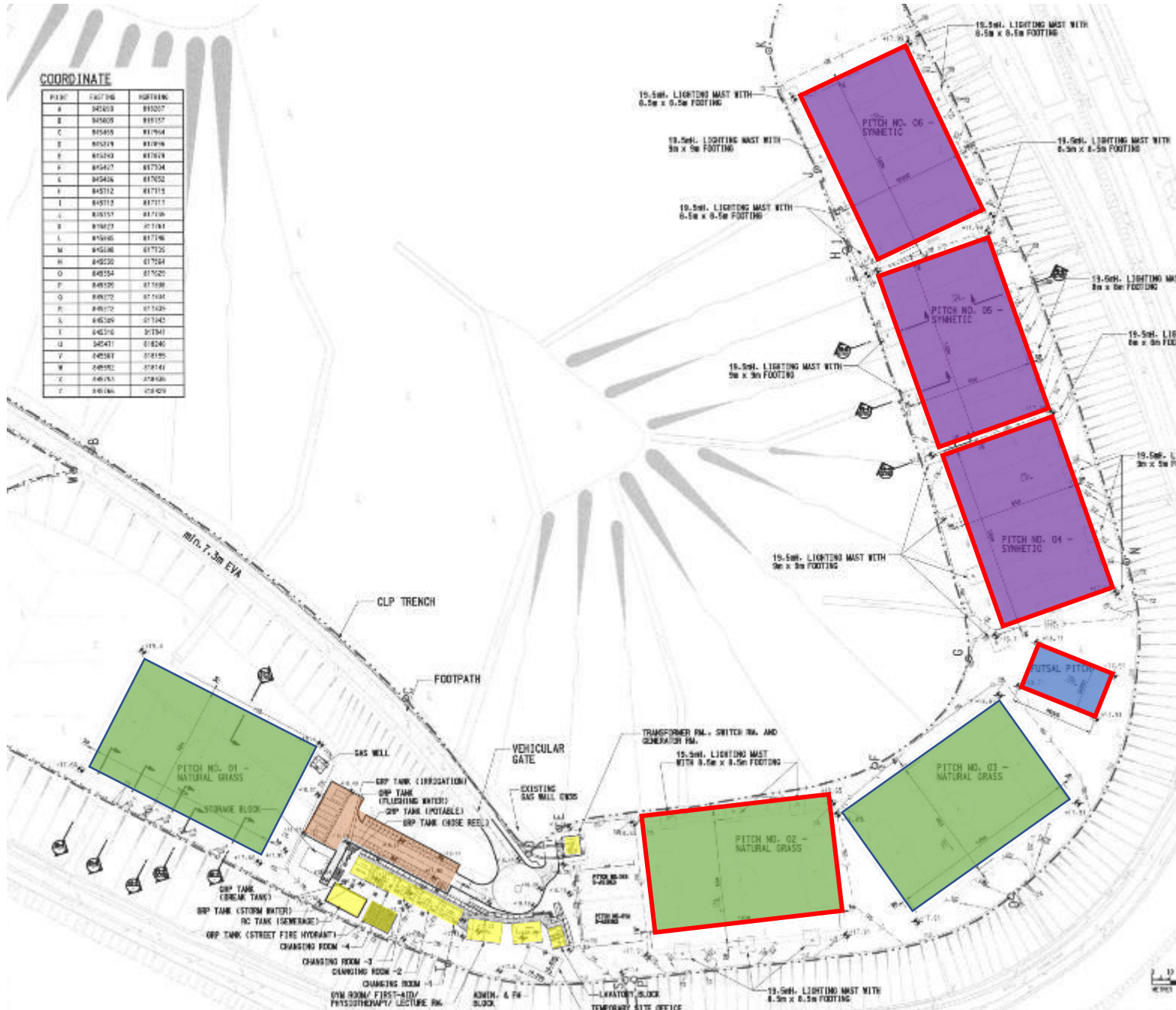
- 3 Natural Pitches (1 with floodlight) ■
- 3 Artificial Pitches (all with floodlight) ■
- Futsal Pitch with simple lighting ■



• Facilities Include:

- 3 Natural Pitches (1 with floodlight) ■
- 3 Artificial Pitches (all with floodlight) ■
- Futsal Pitch with simple lighting ■
- Car Park ■



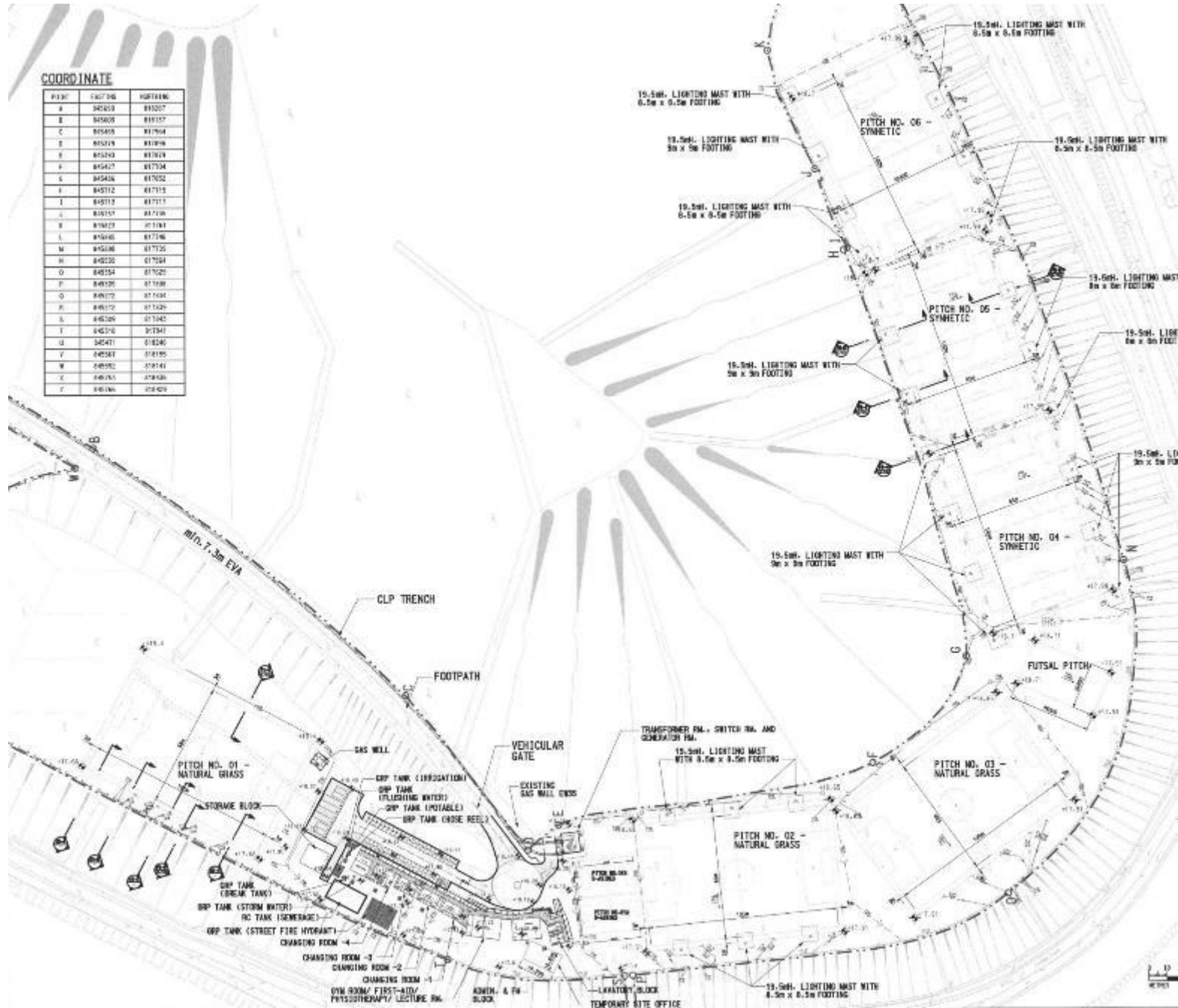


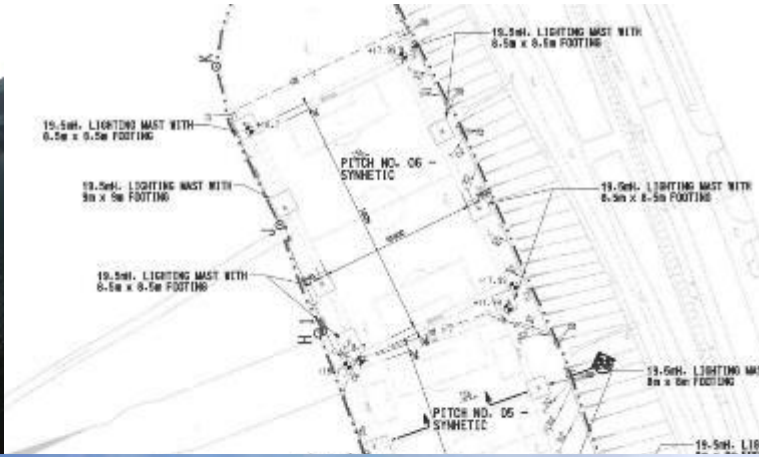
• Facilities Include:

- 3 Natural Pitches (1 with floodlight)
- 3 Artificial Pitches (all with floodlight)
- Futsal Pitch with simple lighting
- Car Park
- Ancillary Buildings



- Access:





- Access:

- Vehicular Access from Wan Po Road







- Access:

- Vehicular Access from Wan Po Road

- Pedestrian access staircase from TKO South Waterfront Promenade





# Aerial Photos

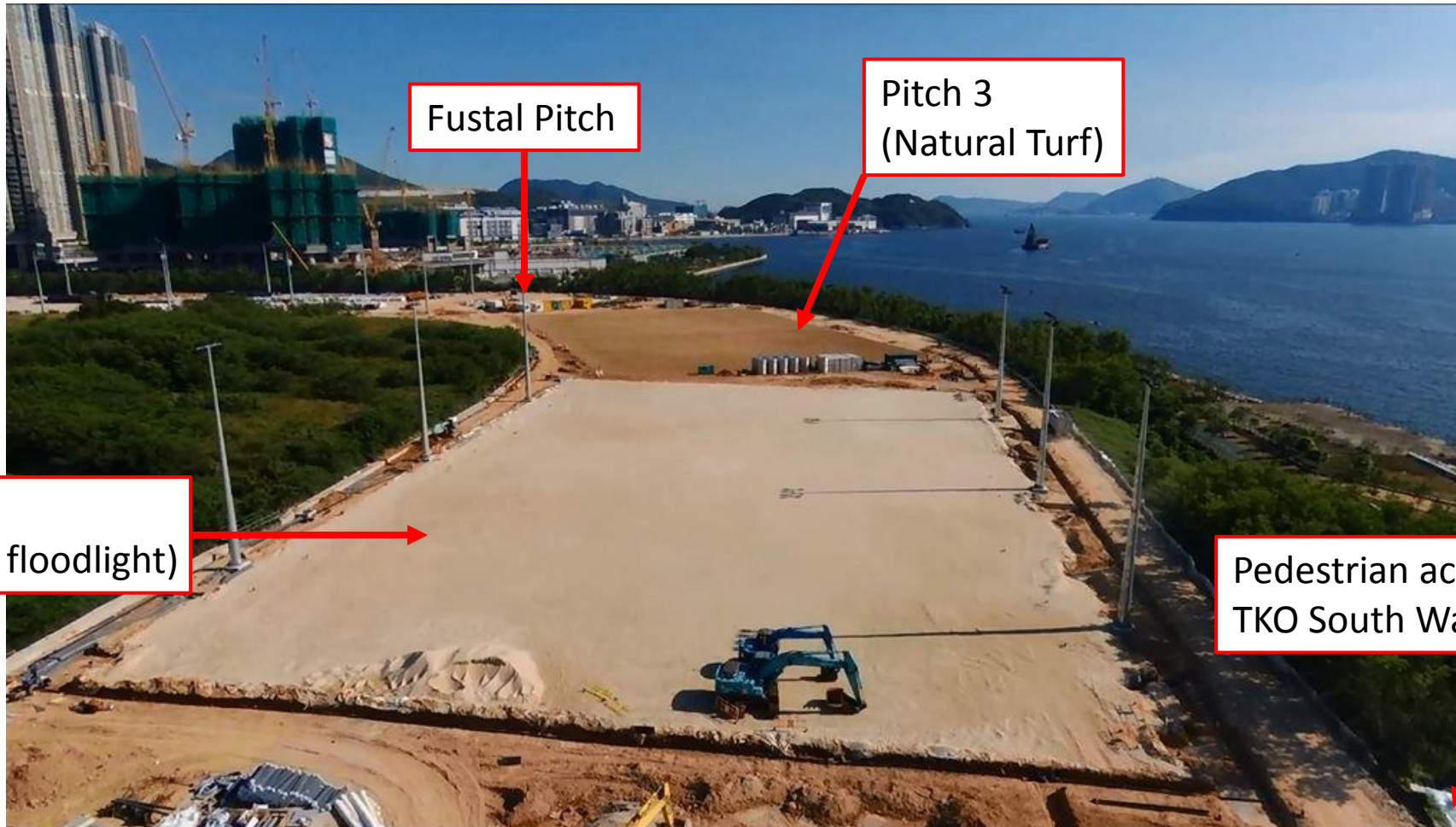




# Aerial Photos



# Aerial Photos



Futsal Pitch

Pitch 3  
(Natural Turf)

Pitch 2  
(Natural Turf with floodlight)

Pedestrian access staircase from  
TKO South Waterfront Promenade



# Aerial Photos



# Operation Matters

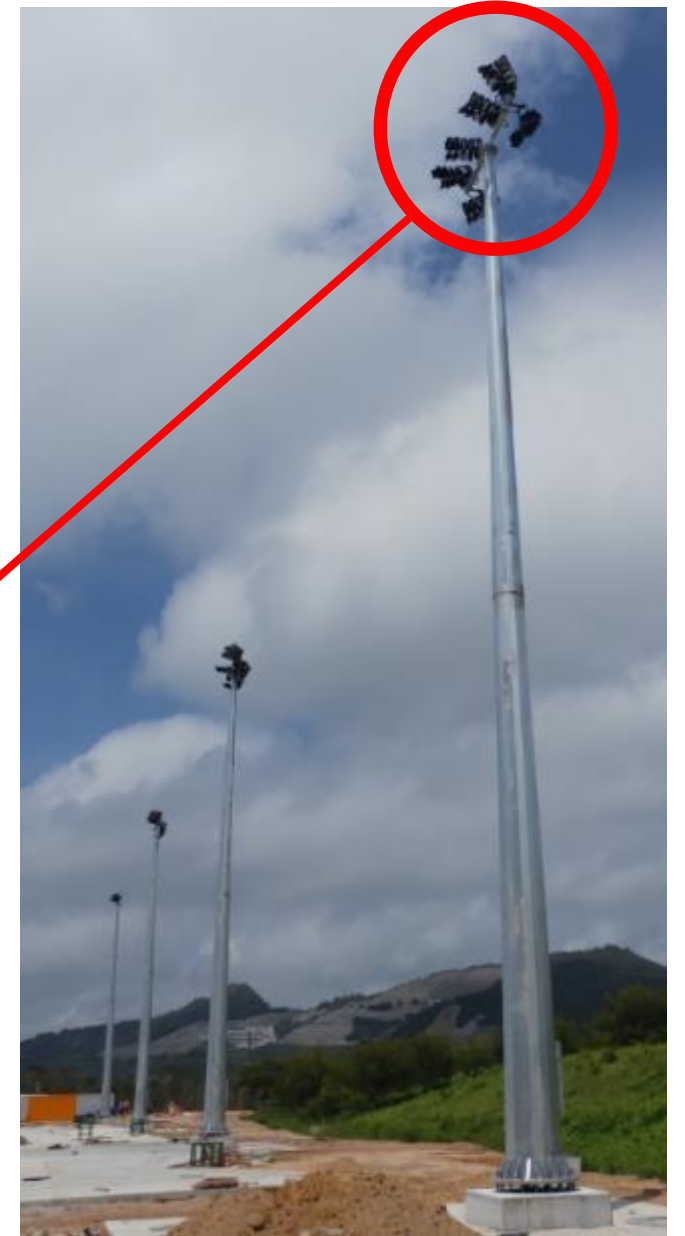
- Opening Hours: 7am – 11pm
- Last booking finish at 10:30pm
- Floodlight will be dimmed down at 10:30pm
- All floodlight will be switched off at 11:00pm
- 5,000 synthetic pitch hours (include 30% of peak hours) shall be available for booking by the public



# Floodlight

- LED
- 19.5m tall
- All fixtures are pointed to the pitches
- Louver is installed for the hillside fixtures

**AAA-LUX WS Series LED**  
**ABACCUS**



# PA System

- General & emergency announcement
- Mounted on high mast, pointed towards hillside
- 50W small power horn type speaker
- Comply with EPD's guidelines



**LBC 3484/00 Horn Loudspeaker**

