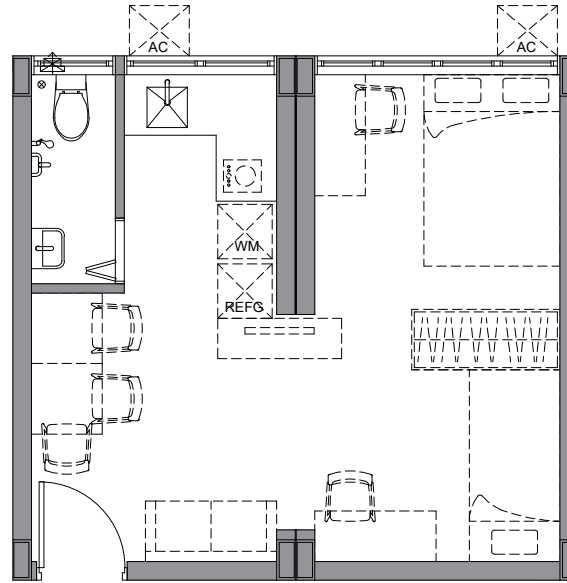
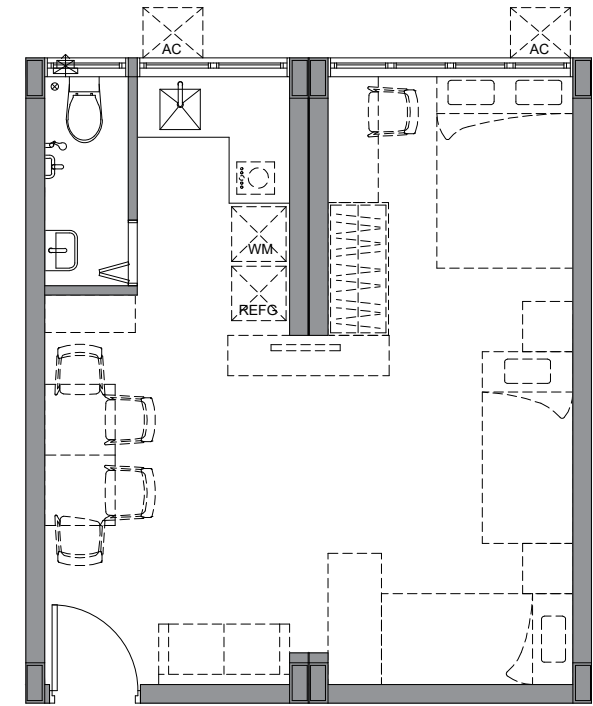


一至二人單位
ONE TO TWO-PERSON UNIT
(13 平方米 m²)



三至四人單位
THREE TO FOUR-PERSON UNIT
(25 平方米 m²)



四至五人單位
FOUR TO FIVE-PERSON UNIT
(31 平方米 m²)

- 備註：
REMARK:
1. 各類單位的設計及布局只供參考，並視乎將來「簡約公屋」各項目承建商的實際設計而定。
THE DESIGN AND LAYOUT OF EACH TYPE OF UNIT ARE FOR REFERENCE ONLY AND SUBJECT TO THE ACTUAL DESIGN OF THE CONTRACTOR OF EACH LIGHT PUBLIC HOUSING PROJECT IN THE FUTURE.
 2. 各類單位只提供及安裝電熱水爐及位於洗手間的抽氣扇等基本設備。
EACH TYPE OF UNIT WILL PROVIDE AND INSTALL ONLY BASIC EQUIPMENT LIKE ELECTRIC WATER HEATER AND EXHAUST FAN IN THE BATHROOM.
 3. 樓面平面圖以虛線所顯示的家具及電器只供參考，並不包括在「簡約公屋」項目的範圍內。
THE FURNITURE AND ELECTRIC APPLIANCES INDICATED IN DOTTED LINE IN THE FLOOR PLAN ARE FOR REFERENCE ONLY AND EXCLUDED FROM THE SCOPE OF THE LIGHT PUBLIC HOUSING PROJECTS.
 4. 以上平面圖或不適用於五間空置或即將空置校舍項目。
THE ABOVE FLOOR PLAN MAY NOT BE APPLICABLE TO THE FIVE PROJECTS OF VACANT OR TO-BE-VACANT SCHOOL PREMISES.



標準單位樓面平面圖
TYPICAL UNIT FLOOR PLAN

1HL
推展「簡約公屋」項目
IMPLEMENTATION OF LIGHT PUBLIC HOUSING