

食物環境衛生署
中區及西區環境衛生辦事處的合併安排

目的

本文件旨在向議員闡述食物環境衛生署（食環署）中區和西區環境衛生辦事處合併後的架構變動。

背景

2. 食環署需要簡化提供服務的方式，並更加善用資源去配合目前的工作量／工作緩急次序，故由 2004 年 10 月 27 日起分階段作出架構變動。

架構變動

3. 架構變動以重行調配食環署總部和分區環境衛生辦事處（分區辦事處）的衛生督察職系人員為主。由 2004 年 10 月 27 日起，中區和西區分區辦事處二合為一，以簡化分區的工作，並更有效地統籌食環署為該兩區和中西區區議會提供的服務。

4. 合併後，分區管理層的人手有所調動，前線人員則只有輕微變動。中西區衛生督察職系人員的編制重整後，食環署會繼續為市民提供優質服務，並全力支持中西區區議會的工作。新中西區環境衛生辦事處由以往監管中西兩區的大型分區主管執掌，其職銜為分區環境衛生總監，由兩名衛生總督察協助日常工作。作為中西區環境衛生辦事處主管，他須代表食環署出席區議會和地區管理委員會會議；兩名副手和組別主管則繼續出席其他小組委員會會議。衛生督察職系人員編制在合併前後的變動已表列於附件 I；新中西區環境衛生辦事處的組織圖則載於附件 II。

檢討

5. 食環署會密切監察架構變動後的情況，確保目前為市民提供的服務和給予中西區區議會的支援不受影響。

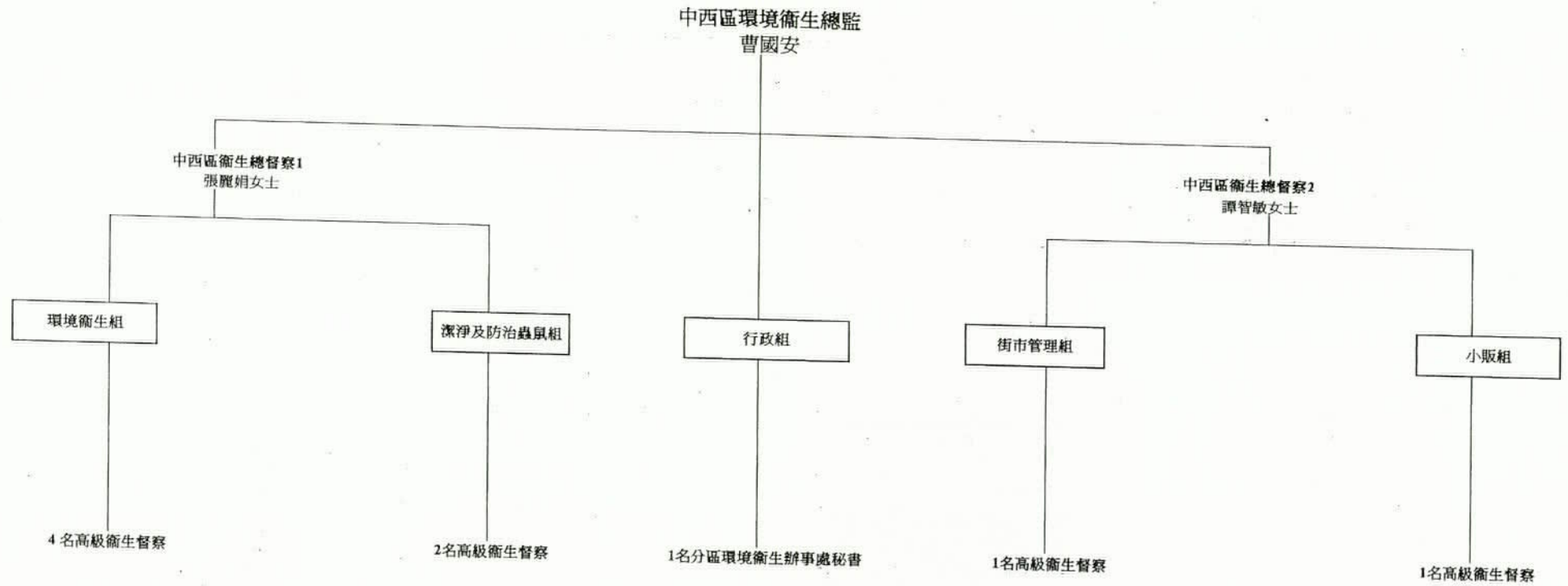
文件提交

6. 中西區環境衛生總監將於 2004 年 11 月 25 日的會議上簡介本文的內容和回答議員的提問。

食物環境衛生署
中西區環境衛生辦事處
2004 年 11 月

工作類別	職級	衛生督察職系人員的編制	
		中區及西區環境衛生辦事處合併前 (i)	中區及西區環境衛生辦事處合併後 (ii)
地區管理	高級總監	1	1
	總監	2	0
	衛生總督察	4	2
環境衛生	高級衛生督察	4	4
	衛生督察	21	17
潔淨及防治蟲鼠	高級衛生督察	2	2
	衛生督察	4	3
街市管理	高級衛生督察	1	1
	衛生督察	1	1
小販管理	高級衛生督察	2	1
	衛生督察	2	1
總數		44	33

中西區環境衛生辦事處新組織圖



Merging of District Environmental Hygiene Offices
in Central and Western Districts
Food and Environmental Hygiene Department

Purpose

To inform members of the organizational changes as a result of merging of the District Environmental Hygiene Offices (DEHOs) in Central (C) and Western (W) Districts, Food and Environmental Hygiene Department (FEHD).

Background

2. Due to the need to streamline the delivery of services and to better cope with the existing workload/priorities in FEHD, the Department has introduced some organizational changes in the Department in phases with effect from 27 October 2004.

The Changes

3. The organizational changes involve primarily the redeployment of the Health Inspectorate Officers (HIOs) both in FEHD Headquarters and DEHOs. With effect from 27 October 2004, the DEHOs in C & W Districts were merged into one in order to streamline district operations and to better co-ordinate the provision of FEHD services within the two Districts and to the C&W District Council (DC).

4. As a result of the merging, there has been staff reshuffle at the district management level but there are only minimal changes to the frontline staff. With the rationalization of staff strength of HIOs in C & W Districts, the Department remains committed to provide quality services to the public and full support to the C&W DC. The former head of the superdistrict overseeing the C

& W Districts has been designated as the District Environment Hygiene Superintendent (DEHS) responsible for leading the new C/W DEHO. He is assisted by two Chief Health Inspectors in the day to day operations. Being the district head of C/W DEHO, he will represent the Department to attend DC and District Management Committee meetings. His two deputies and section heads will continue to attend other sub-committee meetings as appropriate. A table showing the changes in establishment of HIOs before and after the merging is at Annex I. The organizational chart of the new C/W DEHO is at Annex II.

Review

5. FEHD would closely monitor the situation after implementing the organizational changes to ensure that our existing services to the public as well as support to C&W DC will not be affected.

Presentation

6. DEHS(C/W) will present this paper at the meeting on 25 November 2004 and answer any questions that Members may have on this matter.

Central/Western District Environmental Hygiene Office

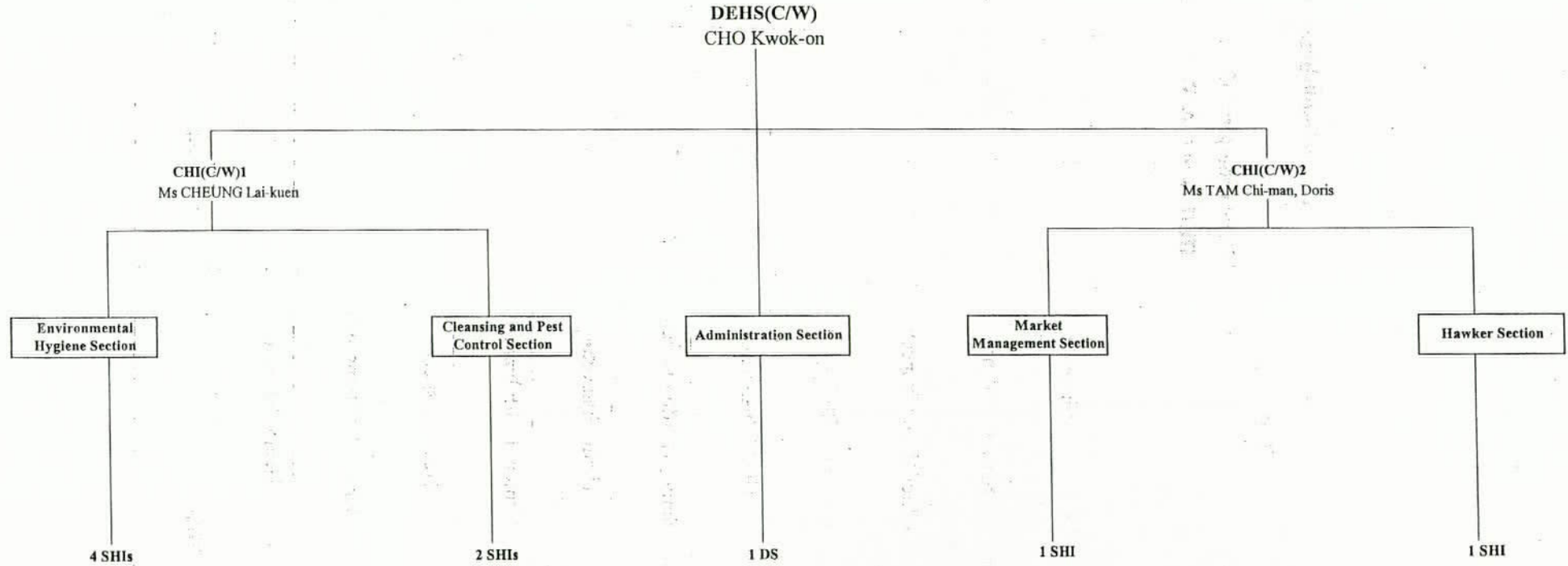
Food and Environmental Hygiene Department

November 2004

Annex I

Work Stream	Rank	Establishment of H/Os	
		Before merging of DEHOs in C & W (i)	After merging of DEHOs in C & W (ii)
District Management	Senior Superintendent	1	1
	Superintendent	2	0
	Chief Health Inspector	4	2
Environmental Hygiene	Senior Health Inspector	4	4
	Health Inspector	21	17
Cleansing & Pest Control	Senior Health Inspector	2	2
	Health Inspector	4	3
Market Management	Senior Health Inspector	1	1
	Health Inspector	1	1
Hawker Control	Senior Health Inspector	2	1
	Health Inspector	2	1
Total		44	33

New Organization Chart of Central / Western District Environmental Hygiene Office



Legend:
DEHS(C/W) - District Environmental Hygiene Superintendent (Central/Western)
CHI(C/W) - Chief Health Inspector (Central/Western)
SHI - Senior Health Inspector
DS - District Secretary