

中西區區議會

山頂改善計劃

目的

徵詢議員對山頂改善計劃的範圍及概念設計的意見。

背景

2. 為提升和保持香港作為首選旅遊目的地的吸引力，旅遊事務署於二零零零年開始推行「旅遊區改善計劃」。根據這計劃率先進行的中西區改善工程將於今年內完成。山頂由於是旅客必到的景點，因此也納入改善計劃之內。

3. 香港旅遊發展局在二零零二年進行了「改善及發展山頂旅遊特色」顧問研究。該研究提出的其中一項建議，是山頂改善計劃應以「維多利亞式」建築風格作為設計主題。

工程範圍

4. 山頂改善工程範圍包括山頂商業中心區、步行徑及山頂公園。建議改善項目包括種植更多花木、重鋪和修葺路面、改善街道照明、闢設座椅和涼亭，以及安裝指示標誌等。工程範圍藍圖載於附件 I，而擬議工程詳情則載於附件 II。

諮詢

5. 我們自二零零四年三月起，一直就擬議工程徵詢有關各方的意見，計有山頂纜車有限公司、恒隆地產有限公司、山頂協會、中西區區議會轄下文化康樂及社會事務委員會和旅遊事務暨推動本土經濟工作小組、中環及半山分區委員會和山頂居民。總的來說，有關各方同意山頂改善計劃的概念設計。我們在訂定最終的設計時，會考慮有關各方所提出的意見。

6. 在進行諮詢期間，我們曾經告知有關各方，正探討可否築建一條新的行人徑，連接柯士甸山道遊樂場與舊總督山頂別墅守衛室，作為通往山頂公園的捷徑。在研究建議的可行性時，有關部門曾作詳細的實地視察。鑑於該址地形十分陡峭，如要興築一條適當的行人徑，必須砍掉大量樹木，是故我們不建議修建該行人徑。因此，行人徑不會納入工程範圍之內。我們會將最新情況知會有關各方。

推行計劃

7. 視乎區議會的意見，我們計劃於二零零五年年中向立法會申請撥款。工程可望於二零零五年年底展開，二零零七年完成。山頂改善計劃將會分階段進行，以盡量減少對山頂居民及旅客造成的不便。山頂纜車有限公司將於二零零五年二月至二零零六年年初期間為凌霄閣進行翻新工程。本署會與該公司緊密合作，確保兩項工程配合得宜。

交通狀況

8. 現時旅客可以乘搭巴士、專線小巴、旅遊巴、的士、私家車或纜車到山頂遊覽。在山頂廣場內，分別有超過 400 個私家車位和 20 個旅遊巴泊車位，以及 32 個上落客車位，供市民使用，數量應足以應付需求。在黃金周期間，需求一般較大，屆時警方會實施特別交通安排。本署會繼續與運輸署緊密聯繫，監察山頂的交通及行人流量。

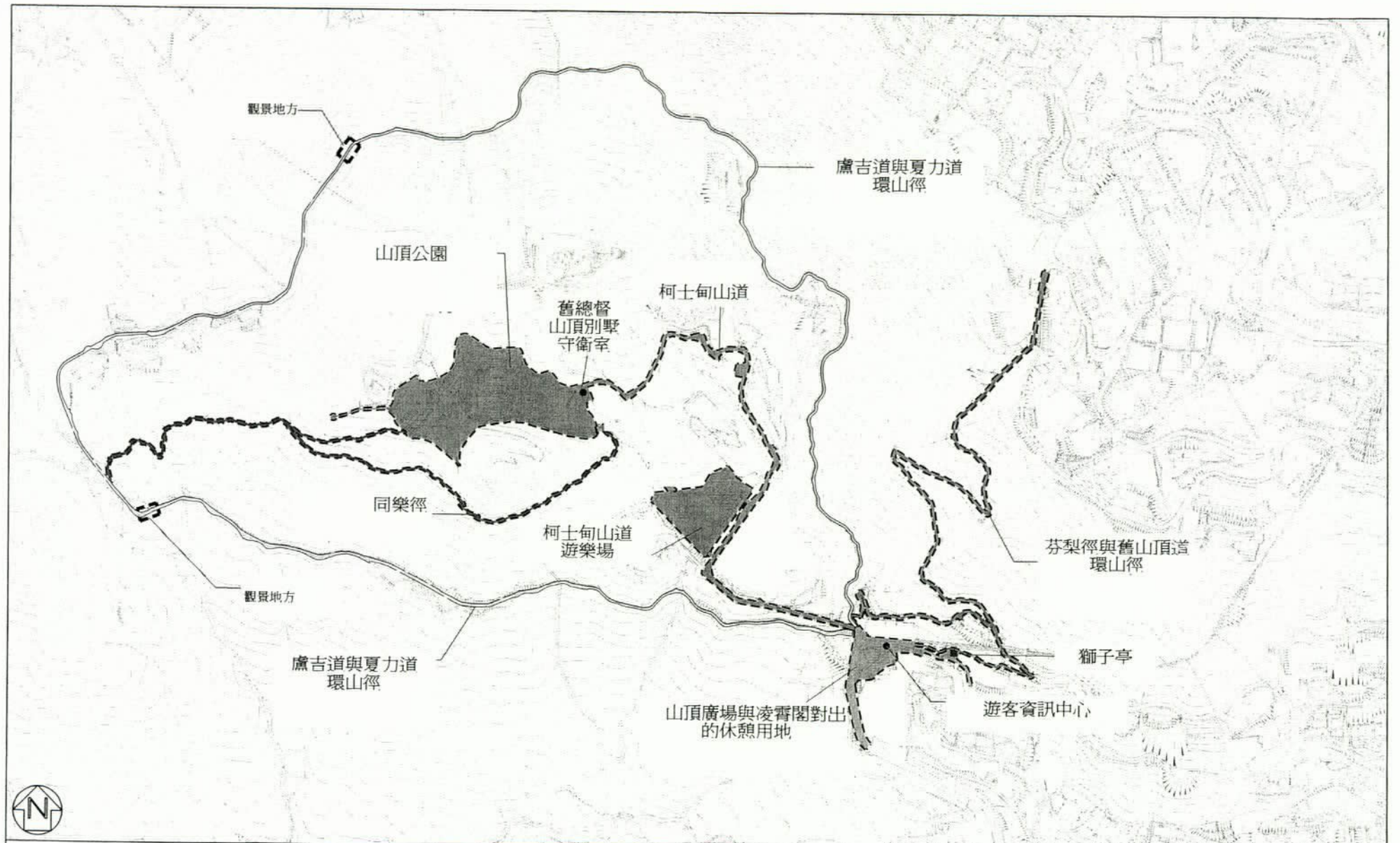
徵詢意見

9. 請各議員就以下兩點提出意見—

(a) 山頂改善計劃的概念設計；及

(b) 由於擬議的行人徑不會納入工程範圍內(如上文第 6 段所述)，山頂改善計劃應否包括舊總督山頂別墅守衛室及山頂公園改善工程。

旅遊事務署
二零零五年一月



title

山頂改善計劃
總綱發展藍圖

drawing no.	SKETCH A	1:5000
		ARCHITECTURAL SERVICES DEPARTMENT

山頂改善計劃 工程範圍

- (A) 山頂廣場與凌霄閣對出的休憩用地
- 重鋪山頂道與獅子亭之間的一段芬梨道
 - 美化該幅休憩用地：減少層級，重鋪整個廣場，並遷移部分花槽，以擴闊視野和闢出更多可用空間，供舉行戶外活動
 - 利用一個已停止運作的舊式山頂纜車車廂，設立遊客資訊中心
 - 闢建維多利亞式涼亭
 - 重新設計噴水池
 - 綠化環境，如擺放多些可搬移的花槽，或在燈柱懸掛花籃等
 - 裝置方向指示標誌及景點資料板
- (B) 獅子亭
- 將獅子亭重新髹漆
 - 更新資訊地圖牌
 - 改善照明及座椅設施等
- (C) 同樂徑
- 修葺行人徑
 - 設置維多利亞式照明、廢紙箱、座椅等
 - 安裝方向指示標誌
- (D) 芬梨徑與舊山頂道環山徑
- 修葺行人徑
 - 設置維多利亞式照明、廢紙箱、座椅等
 - 安裝方向指示標誌及景點資料板
- (E) 盧吉道與夏力道環山徑
- 修葺行人徑
 - 設置維多利亞式照明、廢紙箱、座椅等
 - 改善眺望薄扶林水塘及昂船洲的觀景地方，設置維多利亞式照明、涼亭、廢紙箱、欄杆、座椅等
 - 裝置方向指示標誌及景點資料板
- (F) 柯士甸山道
- 設置維多利亞式照明、廢紙箱等
 - 裝置方向指示標誌
- (G) 柯士甸山道遊樂場
- 改建公共廁所及有蓋行人道為維多利亞式建築物
- (H) 舊總督山頂別墅守衛室
- 把舊總督山頂別墅守衛室改作展覽廳
 - 美化守衛室對出空地
- (I) 山頂公園
- 拆卸現有公共廁所、小食亭及涼亭，並改建成維多利亞式建築物
 - 加建迷宮式庭園設計
 - 裝置景點資料板，描述山頂歷史
 - 修葺草地，設置維多利亞式長椅、日規、涼亭等

Central and Western District Council

Peak Improvement Scheme

Purpose

To seek members' views on the scope and conceptual design of the Peak Improvement Scheme.

Background

2. To enhance and sustain Hong Kong's attractiveness as a premier tourist destination, the Tourism Commission (TC) has since 2000 embarked on a Tourism District Enhancement Programme. One of the earliest projects implemented under this Programme is the Central and Western District Enhancement Scheme due for completion this year. The Peak, being a "must-see" attraction to our visitors, has also been identified for improvement under the Programme.

3. In 2002, the Hong Kong Tourism Board conducted a consultancy study on "Improvement and Further Development of the Peak as a Visitor Attraction" which recommended, inter alia, the "Victorian" theme be adopted for the Peak Improvement Scheme.

Project Scope

4. The project area will cover the commercial core, the walking trails and the Victoria Peak Garden. Proposed improvement works will include more planting, repaving and re-surfacing, upgrading of street lighting, provision of seating facilities and shelters, installation of signage etc. A layout plan is at Annex I. Detailed Information on the proposed works is at Annex II.

Consultation

5. We have been consulting relevant stakeholders since March 2004.

These include Peak Tramways Co Ltd; Hang Lung Properties Ltd; the Peak Association; the Cultural, Leisure and Social Services Committee and the Working Group on Development of Tourism and Local Community Economy of the Central and Western District Council; the Chung Wan and Mid-Levels Area Committee and the Peak residents. Generally speaking, the conceptual design of the Peak Improvement Scheme is agreeable to parties concerned. We shall take into account their comments when finalizing the design.

6. During the aforesaid consultation sessions, we had informed the parties concerned that we were exploring the possibility of constructing a new footpath linking Mount Austin Road Playground and Gate Lodge which will serve as a short-cut to the Victoria Peak Garden. Departments concerned have examined the site condition in detail during feasibility study. In view of the extremely difficult site conditions, extensive tree felling would be required in constructing a proper footpath. The construction of the footpath is therefore not recommended and has been excluded from the project scope. We shall revert to the parties concerned accordingly.

Programme

7. Subject to the views of the District Council, we plan to seek funding approval of the Legislative Council in mid 2005. Works are expected to commence in end 2005 for completion in 2007. The Peak Improvement Scheme will be implemented in phases with a view to minimizing inconvenience to the Peak residents and visitors. Peak Tramways Co Ltd will carry out refurbishment works for the Peak Tower between February 2005 and early 2006. We will work closely with the Company to ensure proper interface of works between the two projects.

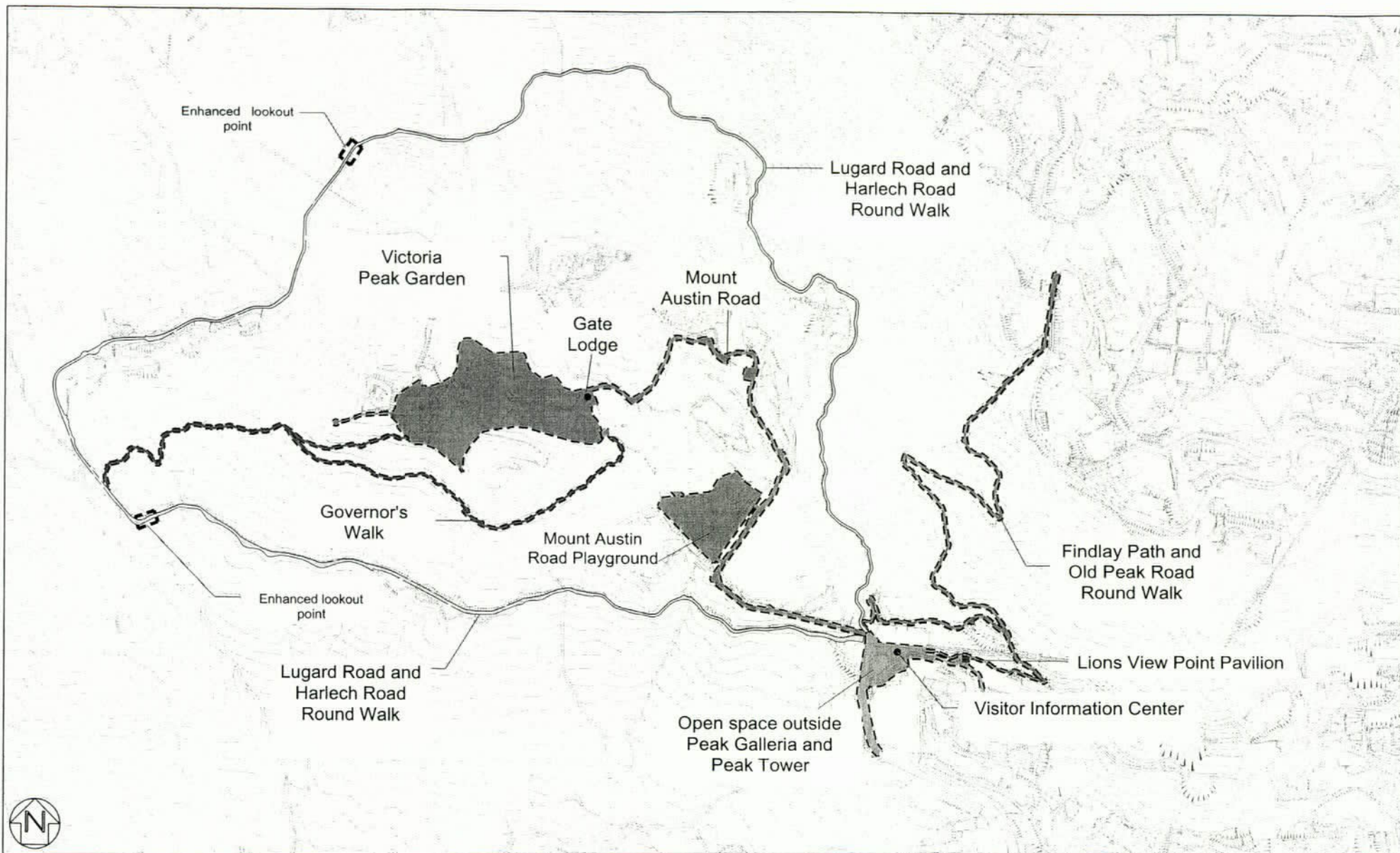
Traffic Condition

8. At present, visitors can go to the Peak by buses, minibuses, coaches, taxis, private cars or the Peak Tram. There are more than 400 and 20 parking spaces for private cars and coaches respectively and 32 loading/unloading spaces inside the Peak Galleria for public use. The capacity should be sufficient to meet the demand. During Golden Week periods when demand is generally higher, the Police will implement special traffic arrangements. We shall continue to liaise closely with TD to monitor the traffic and pedestrian flow on the Peak.

Advice Sought


9. Members are invited to comment on –
 - (a) the conceptual design of the Peak Improvement Scheme; and
 - (b) whether the project should include the enhancement works at Gate Lodge and Victoria Peak Garden in view of the exclusion of the proposed footpath from the project scope mentioned in para. 6 above.

Tourism Commission
January 2005



title

Peak Improvement Scheme
Master Layout Plan

drawing no.	SKETCH A	1:5000
		ARCHITECTURAL SERVICES DEPARTMENT

Peak Improvement Scheme
Project Scope

(A) Open Space outside Peak Galleria and Peak Tower

- Repaving the section of Findlay Road between Peak Road and the Lions View Point Pavilion
- Beautifying the open space by reducing the number of levels, repaving the whole piazza and relocating some of the planters to open up the view and create more usable space for outdoor activities
- Setting up a visitor information center by displaying a de-commissioned Peak Tram cabin
- Providing Victorian-style shelter
- Re-designing the water fountain
- Greening, such as placing more movable planters or hanging baskets
- Installing directional and interpretative signage

(B) Lions View Point Pavilion

- Repainting the pavilion
- Replacing the mapboard
- Enhancing lighting and seating, etc.

(C) Governor's Walk

- Making good the footpaths
- Installing Victorian-style lighting, litter bins, seating, etc.
- Installing directional signage

(D) Findlay Path and Old Peak Road Round Walk

- Making good the footpaths
- Installing Victorian-style lighting, litter bins, seating, etc.
- Installing directional and interpretative signage

(E) Lugard Road and Harlech Road Round Walk

- Making good the footpaths
- Installing Victorian-style lighting, litter bins, seating, etc.
- Enhancing the lookout points overlooking Pok Fu Lam Reservoir and Stonecutter's Island by installing Victorian-style lighting, shelter, litter bins, railings, seating, etc.
- Installing directional and interpretative signage

(F) Mount Austin Road

- Installing Victorian-style lighting, litter bins, etc.
- Installing directional signage

(G) Mount Austin Road Playground

- Converting the public toilet and covered walkway into Victorian-style structure

(H) Gate Lodge

- Converting Gate Lodge into an exhibition gallery
- Enhancing the open space outside Gate Lodge

(I) Victoria Peak Garden

- Demolishing the existing toilet, kiosk and pavilion and replacing them by Victorian-style structures
- Constructing mazes in the garden
- Installing information boards depicting history of the Peak
- Enhancing the lawns and installing Victorian-style benches, sun dials, gazebos, etc.