

LEGEND

	工作範圍
	擬建升降機
	擬建升降機 地面出口
	擬建升降機 天橋出口

Rev.	Description of Revision	Date	Ckd.

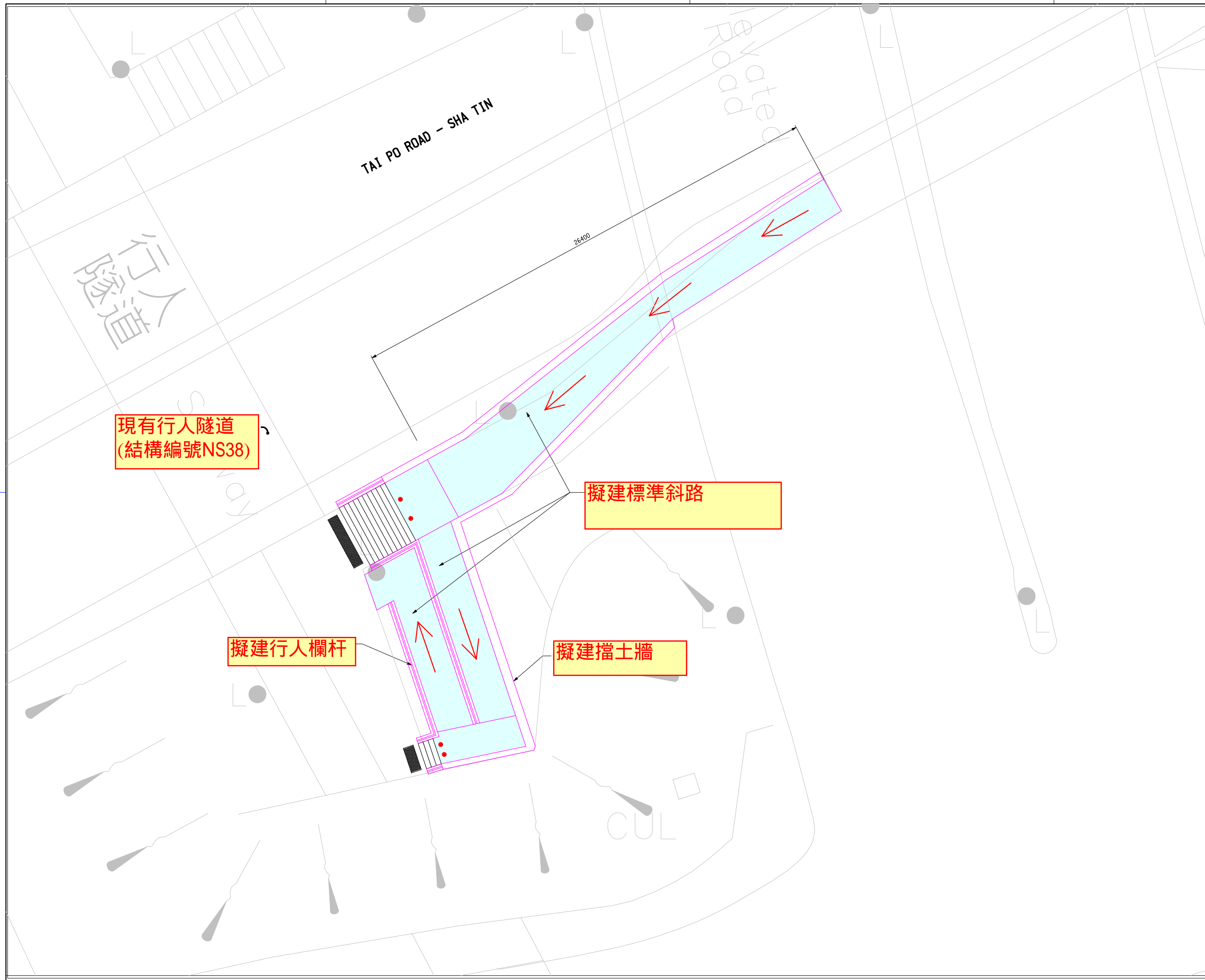
Client
 路政署
 BRIDGES AND STRUCTURES DIVISION
 HIGHWAYS DEPARTMENT

Consultants

Scale 1 in A1 1:250	Date MAR 2010	
Designed DL	Drawn HTC	Checked LWK
Design Team Leader SNG	Date MAR 2010	
Approved KTC	Date MAR 2010	

沙田獅子山隧道公路
 近新田圍邨的行人天橋 (結構編號NF74) 加
 建升降機工程

附件一



現有行人隧道
(結構編號NS38)

擬建標準斜路

擬建行人欄杆

擬建擋土牆

Rev.	Description of Revision	Date	Ckd.

Client

 路政署
 BRIDGES AND STRUCTURES DIVISION
 HIGHWAYS DEPARTMENT

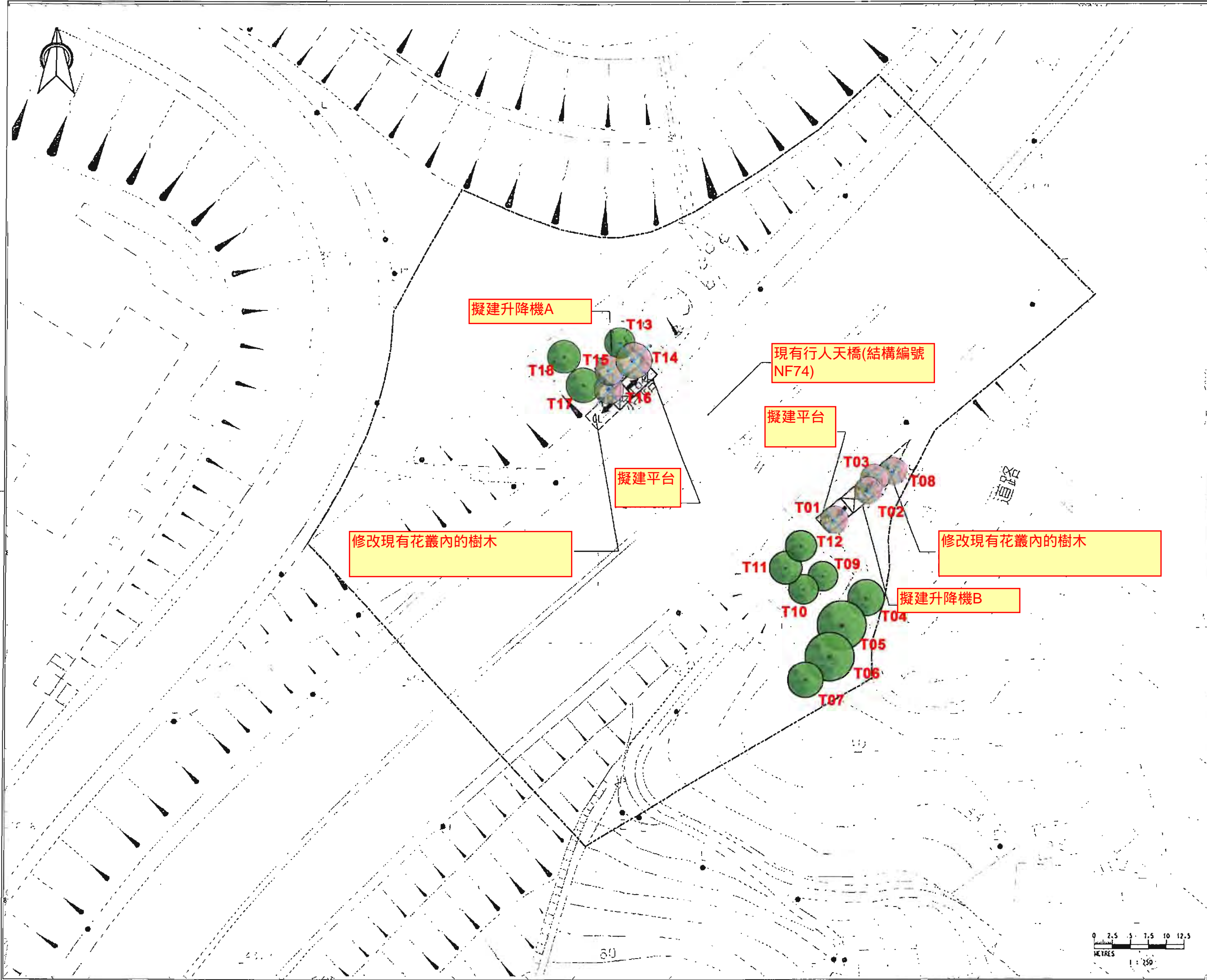
Consultants

 MANNINGS
 (Asia) Consultants Limited

Scale	In A1	Date	MAR 2010
Designed	DL	Drawn	VAN
Design Team Leader	SNG	Checked	LWK
Approved	KTC	Date	MAR 2010

沙田大埔公路(沙田段)近香港專業教育學院(沙田分校)的行人隧道(結構編號NS38)加建斜路工程

附件二



LEGEND:

- 將被保留的樹木 (Trees to be retained)
- 將被砍伐的樹木 (Trees to be removed)

Rev.	Description of Revision	Date	Ckd.

Client

 路政署
 BRIDGES AND STRUCTURES DIVISION
 HIGHWAYS DEPARTMENT

Consultants
Mannings (Asia) Consultants Ltd.

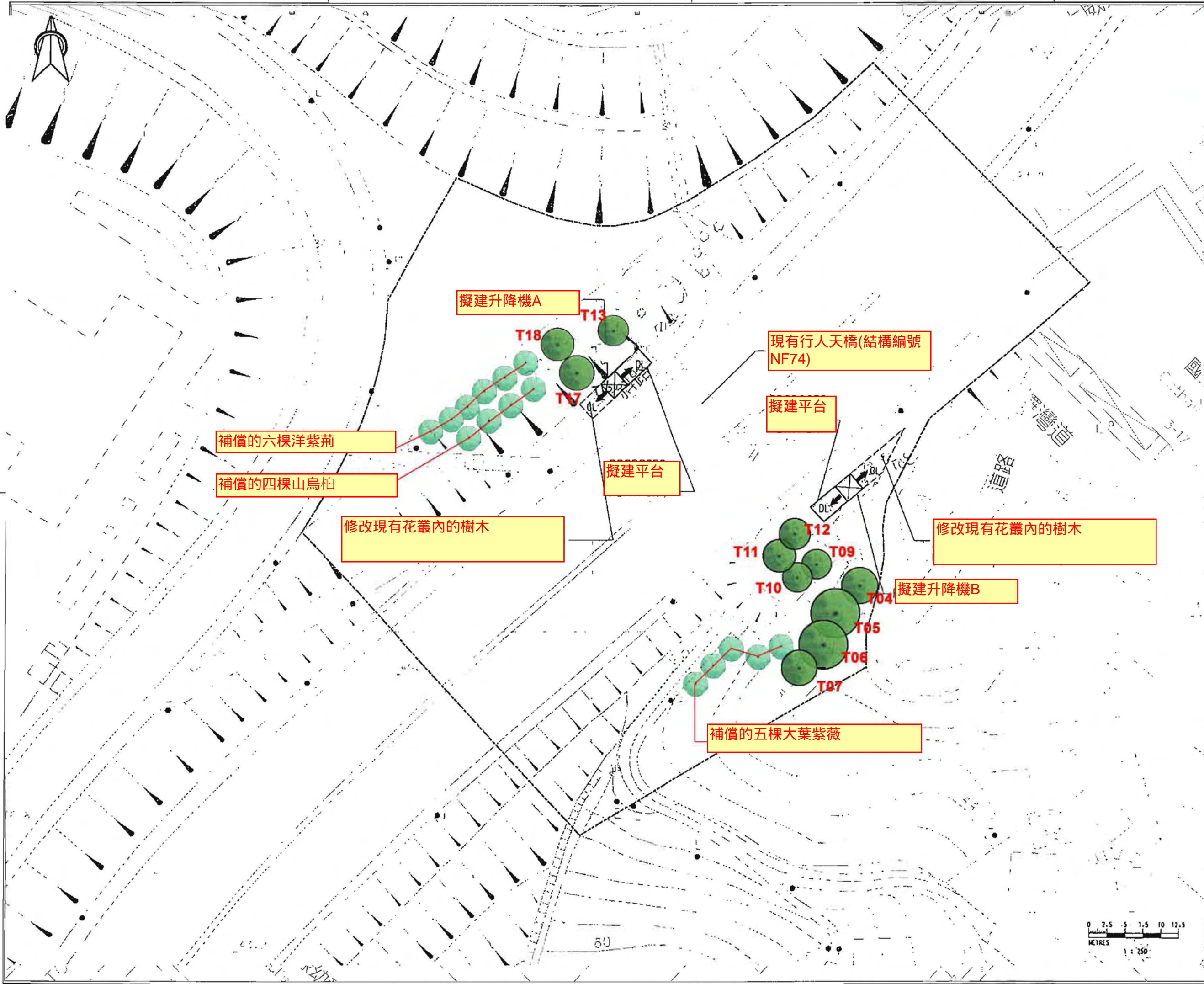
地利 TEAM 73 HK Limited
 urban design urban planning landscape architecture

Scale		Date
Designed EMP	Drawn EMP	JUNE 2010
Design Team Leader EMP	Checked SI / EMP	Date JUNE 2010
Approved SI	Date	JUNE 2010

沙田獅子山隧道公路近新田圍邨的行人天橋(結構編號 NF74)加建升降機工程

樹木補償建議書

附件三(一)



LEGEND:

- T# 將被保留的樹木
- 將會補償的樹木

Rev.	Description of Revision	Date	Qtd.

Client
 路政署
BRIDGES AND STRUCTURES DIVISION
 HIGHWAYS DEPARTMENT

Consultants
Mannings (Asia) Consultants Ltd.

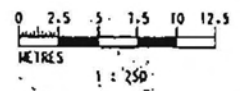
地利 TEAM 73 HK Limited
 urban design urban planning landscape architecture

Scale		Date
Designed EMP	Drawn EMP	JUNE 2010
Design Team Leader		Checked SI / EMP
EMP		Date JUNE 2010
Approved SI		Date JUNE 2010

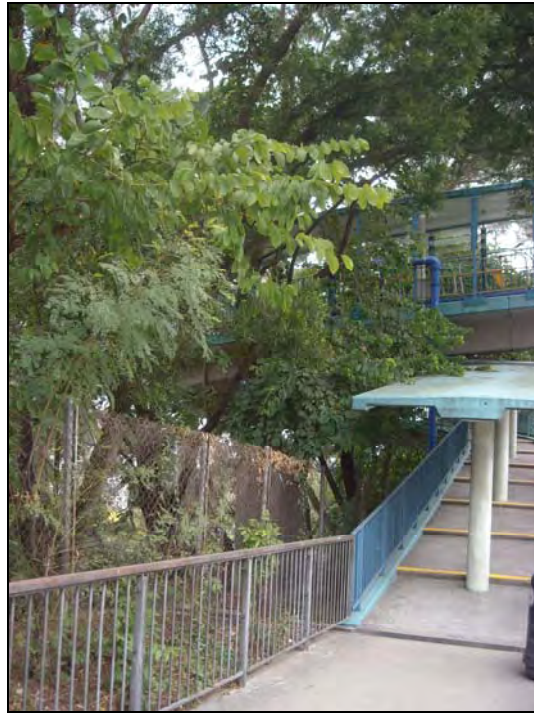
沙田獅子山隧道公路近新田圍邨的行人天橋(結構編號NF74)加建升降機工程

樹木補償建議書

附件三(二)



附圖四(一)
現有行人天橋編號 NF74 狀況



附圖四(二)
升降機 A 的模擬完成圖




附圖四(三)
升降機 B 的模擬完成圖





LEGEND:
 將被移植的樹木
 T#

Rev.	Description of Revision	Date	Ckd.

Client
 路政署
 BRIDGES AND STRUCTURES DIVISION
 HIGHWAYS DEPARTMENT

Consultants
Mannings (Asia)
 Consultants Ltd.

LANDSCAPE ARCHITECT
 TEAM 73 HK Limited
 urban design urban planning landscape architecture
 4/F, China Hong Kong Tower, 8 Hennessy Road, Wanchai, Hong Kong
 Tel: 2865-5713 Fax: 2865-4809 Email: design@team-73.com

沙田大埔公路(沙田段)近香港專業教育學院(沙田分校)的行人隧道(結構編號NS38)加建斜路工程

樹木移植建議書

附件五(一)



LEGEND:



建議移植的位置

現有行人隧道
(結構編號NS38)


擬建標準斜路

T01

T02

T03

Rev.	Description of Revision	Date	Ckd.

Client
 路政署
 BRIDGES AND STRUCTURES DIVISION
 HIGHWAYS DEPARTMENT

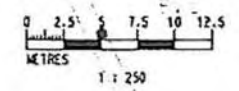
Consultants
Mannings (Asia)
 Consultants Ltd.

LANDSCAPE ARCHITECT
 TEAM 73 HK Limited
 urban design urban planning landscape architecture
 4/F, China Hong Kong Tower, 8 Hennessy Road, Wanchai, Hong Kong
 Tel: 2865-5713 Fax: 2865-4829 Email: design@team-73.com

沙田大埔公路(沙田段)近香港專業教育學院(沙田分校)的行人隧道(結構編號NS38)加建斜路工程

樹木移植建議書

附件五(二)



附圖六
現有行人隧道編號 NS38 狀況



行人隧道 NS38 斜路的模擬完成圖

