

**Tai Po District Council**  
**Environment, Housing and Works Committee**  
**Construction of Landing at Lighted Beacon**

**1. Introduction**

Che Lei Pai Beacon, Fung Wong Wat Beacon and To Tau Tsui Beacon are located in Tolo Channel as shown in the attached drawing no. PW-FD10-070. The beacons are maintained by Marine Department and served as navigation aids to ensure navigation safety of vessels. As shown in the photographs attached at Appendix A, there are no landings at these beacons. Marine Department's front line staff are often subjected to minor injuries and cuts during the embarkation or disembarkation at these beacons when they carry out regular inspection and maintenance works for these beacons. Hence, landings are to be constructed at these beacons to provide safe accesses for Marine Department's staff.

**2. Cost and Programme of works**

The scope of works includes the construction of concrete landings and access. The estimated cost and the programme of works are summarized in the following table:

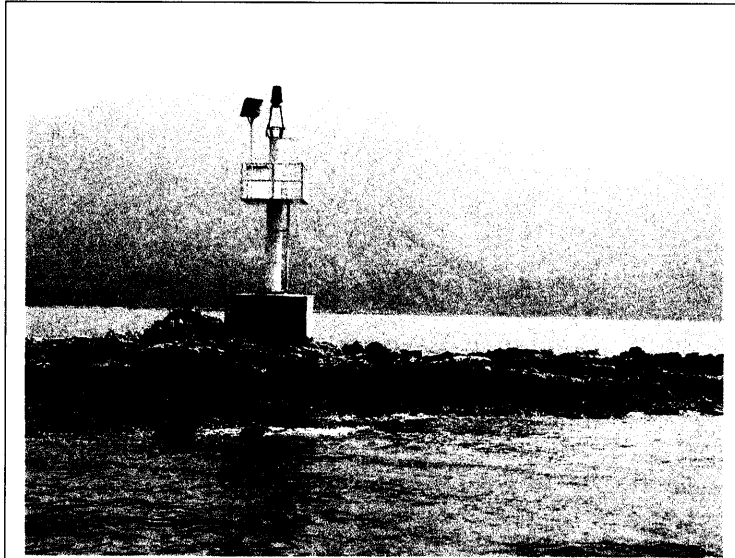
<b>Beacon Name</b>	<b>Estimated Cost</b>	<b>Programme</b>
Che Lei Pai Beacon	\$3.0M	To be completed in 2011
Fung Wong Wat Beacon	\$2.0M	To be completed in 2012
To Tau Tsui Beacon	\$2.0M	To be completed in 2012

**3. Advice Sought**

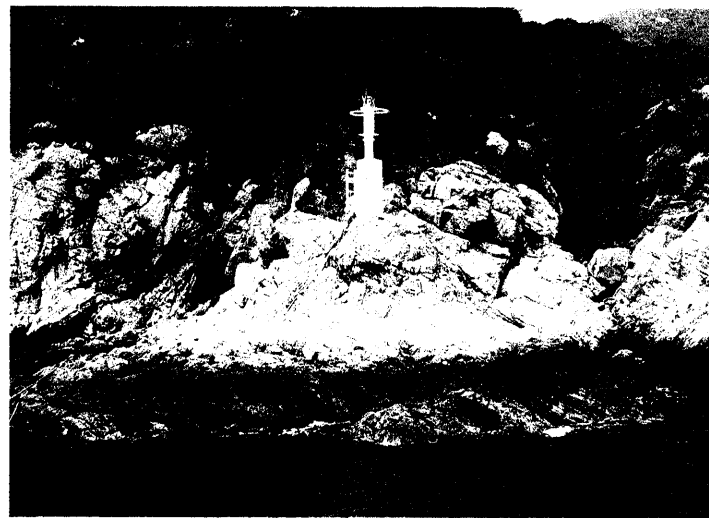
We welcome members' valuable view on the proposed works.

Civil Engineering and Development Department  
Civil Engineering Office  
Port Works Division  
February 2011

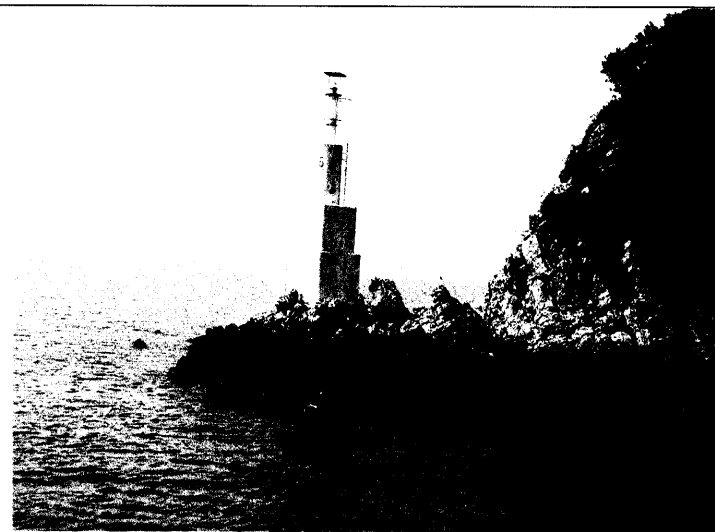




Che Lei Pai Beacon (扯僝排航標)



Fung Wong Wat Beacon (鳳凰笏航標)



To Tau Tsui Beacon (刀頭咀航標)