

**DEVELOPMENT AND IMPLEMENTATION OF
GREENING MASTER PLANS
- PROGRESS REPORT**

PURPOSE

The purpose of this paper is to :

- (a) report to Members the latest position in regard to the development and implementation of Greening Master Plans (GMPs);
- (b) consult Members on the revised study process for development of GMPs; and
- (c) consult Members on the funding application for the development of GMPs for Mong Kok/Yau Ma Tei in Kowloon West.

BACKGROUND

2. A GMP seeks to define comprehensively the greening framework of an area by studying into its characteristics and particular needs as well as providing a guide to the planning, design and implementation of works.

3. In recognition of the fact that greening opportunities will arise under different timeframes, GMPs will embody a spectrum of short, medium and long term measures:

- short-term – such measures will conform to the district layout, posing no conflict with existing land use and/or traffic arrangements and can be implemented within 1 to 2 years;
- medium-term – such measures will generally be associated with urban renewal or redevelopments; and

- long-term – this depicts the ultimate greening vision in the area which may be achieved over a long period of time with various concerted efforts to overcome constraints such as land availability, congested underground installations and by deploying ambitious and innovative methods such as tree corridors alongside highways, roof/podium gardens and vertical greening.

4. To draw up a GMP for an area, extensive effort will be required including the following:

- (a) studying the existing conditions in the district to identify possible greening opportunities;
- (b) drawing up a strategic theme planting for the area;
- (c) detailed planning of the thematic choice of plants to project the characteristics of the district;
- (d) soil studying for planting suitable species;
- (e) examination of any site constraints and underground utility installations to proceed with the appropriate planting methods;
- (f) discussing with
 - Government departments (Highways Department, Water Supplies Department, Lands Department, Leisure and Cultural Services Department, Transport Department etc.)
 - non-Government organizations (e.g. Urban Renewal Authority, Hong Kong Housing Society, Mass Transit Railway Corporation etc.);
 - private developers; and
 - utilities companies; and
- (g) Reviewing on the medium and long-term prospect of greening in

the area in the light of town planning and land use considerations, etc.

5. In undertaking the above, substantial manpower resources will be required. In addition, rich technical knowledge in multi-disciplinary fields (e.g. landscape architect, geotechnical engineer, civil engineer, town planner, land surveyor etc.) and sound professional judgement are necessary to develop high quality and sustainable designs which can meet the expectations of stakeholders. We consider the engagement of consultants to carry out the development and detailed design of GMPs to be the most cost-effective way to meet the needs within the desired timeframe, taking into account constraints of in-house staffing resources, especially landscape architects.

LATEST POSITION

A. Greening Works for Tsim Sha Tsui

6. Upon approval of the Finance Committee (FC) of the Legislative Council (LegCo) on 28 April 2006, greening works for Tsim Sha Tsui started in May 2006 and have proceeded smoothly. Some photomontages of the proposed greening works to be achieved upon completion of establishment period are at **Annex 1**.

B. Revised Study Process for Development of GMPs

7. At previous meetings of the LegCo Planning, Lands and Works Panel and Public Works Sub-Committee (PWSC), Members have suggested the Administration to invite District Councils to provide input at an early stage in the implementation of GMPs. We then undertook to review the current consultation mechanism. In the past months, we have also received requests for more public participation in the study process in the areas/districts concerned. This is because District Councils, as well as members of the public residing in the concerned areas, will have a good knowledge of the aspirations of the local community as well as past experience (both successful and unsuccessful) in the implementation of greening. As such, we propose to extend our study process to collect more views from stakeholders prior to

working out the GMPs under the Enhanced Partnering Approach. This would include consulting the District Councils or their relevant sub-committees at the outset, conducting focus forums for members of public in the locality, etc. Such effort would not only help the consultants to understand the characteristics of the district, identify suitable locations and local constraints, establish the greening theme more effectively but would also help achieve consensus, partnership and sense of belonging in developing GMPs. A flow chart showing the proposed Enhanced Partnering Approach is at **Annex 2**.

C. Phased Approach in Development of GMPs for Remaining Selected Urban Areas

8. While we have already obtained funding to proceed with greening works in Tsim Sha Tsui, we have not done so for the development of GMPs for other selected areas in Kowloon West. We now propose to apply funding with the Legislative Council for development of GMPs for Mong Kok/ Yau Ma Tei. Subject to Members' advice we propose to apply to PWSC/FC for funding after the coming LegCo recess so as to start relevant works as soon as possible.

FUNDING APPLICATION TO BE SUBMITTED TO PWSC/FC

9. Subject to Members' advice, funding application will be submitted to PWSC/FC for the development of GMPs for Mong Kok/Yau Ma Tei in Kowloon West (i.e. involving the part upgrade of PWP item **35CG** entitled "Greening master plan for Kowloon West – studies and works"). The scope will include:

- (a) consultants' fees for the development of GMPs;
- (b) consultants' fees for drawing up of detailed designs of short-term greening measures (all the way to final design) as recommended in the respective GMPs; and
- (c) site investigation (SI) considered necessary.

10. The study areas for the proposed GMPs for Mong Kok/Yau Ma Tei

is at **Annex 3**.

11. We estimate that the total cost of the above will be in the region of \$9.2 million (in MOD prices).

12. Subject to funding approval, the development of GMPs will start in January 2007 for completion by March 2008.

WAY FORWARD

13. Subject to support of Members, we will proceed with applying for funding from PWSC/FC after the current LegCo recess.

ATTACHMENTS

- Annex 1 – Photomontages of the proposed greening works in Tsim Sha Tsui
- Annex 2 – Flow chart of the Enhanced Partnering Approach in developing GMPs
- Annex 3 – Study Area for the Proposed GMPs for Mong Kok and Yau Ma Tei

Civil Engineering and Development Department
August 2006

Before Planting 種植前



Upon Completion of Establishment Period

剛完成培植期

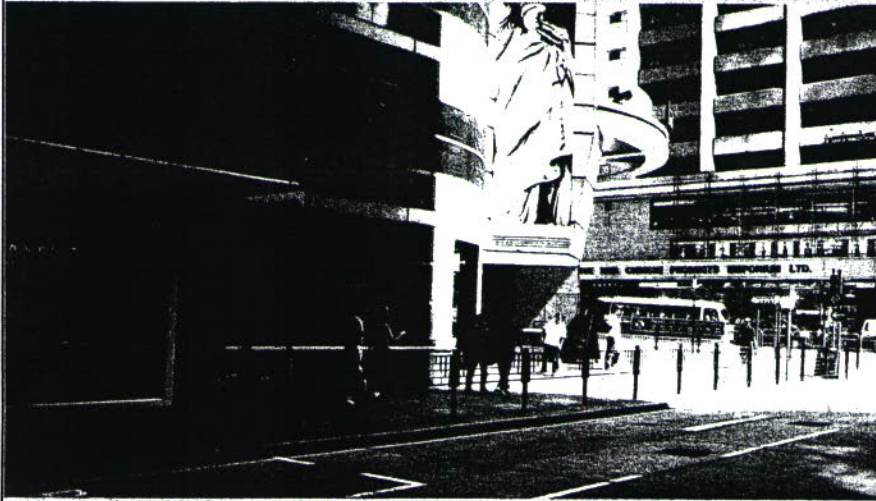


Upon Maturity 成熟後

Example 1 - Salisbury Road

例子一 - 梳士巴利道

Before Planting 種植前



Upon Completion of Establishment Period

剛完成培植期

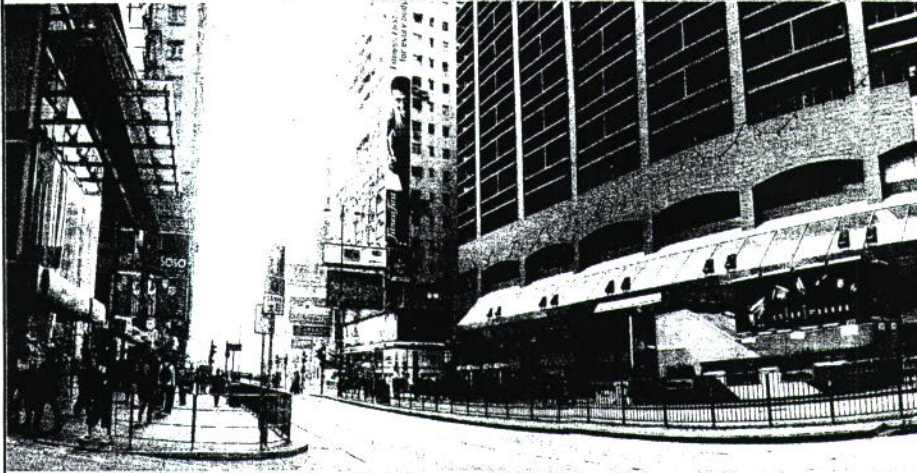


Upon Maturity 成熟後

Example 2 - Peking Road

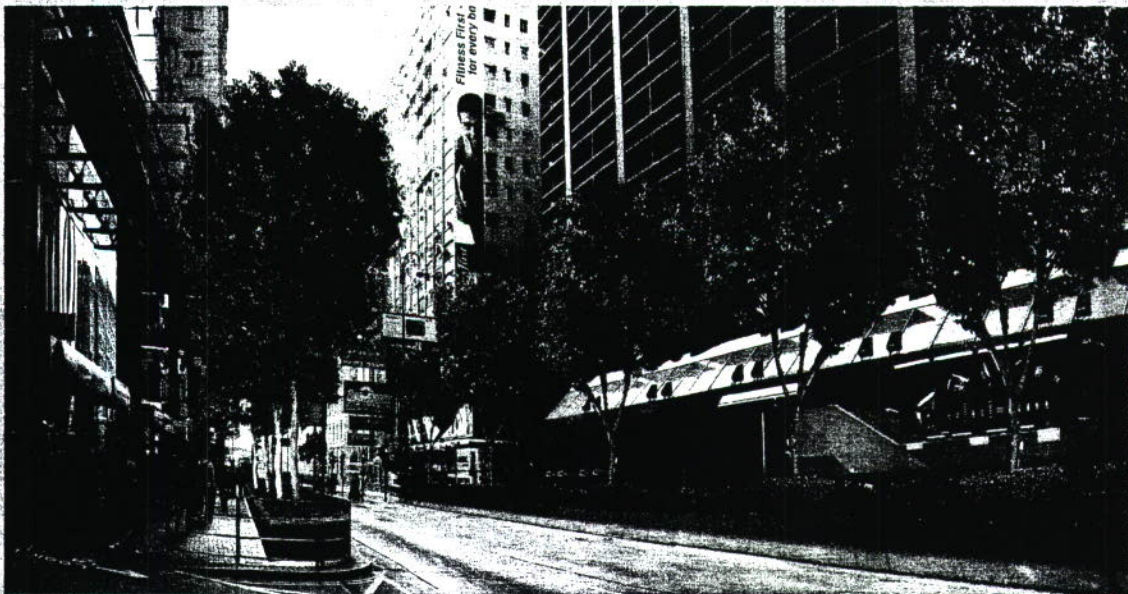
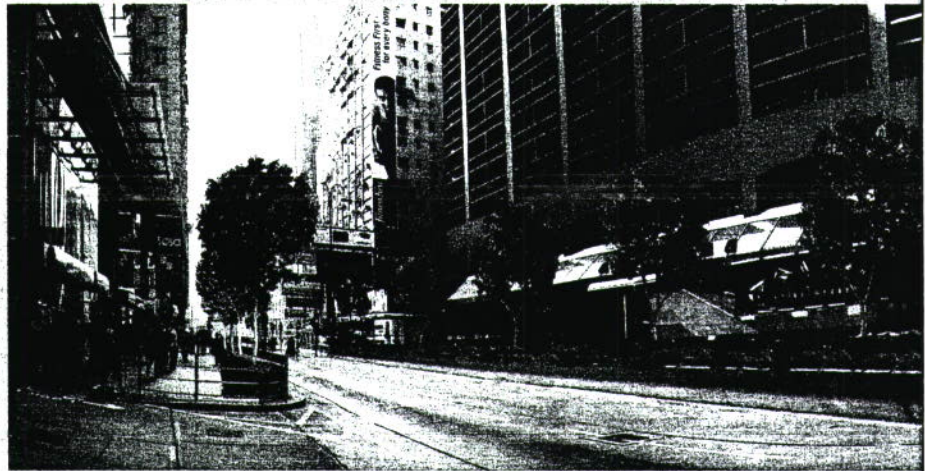
例子二 - 北京道

Before Planting 種植前



Upon Completion of Establishment Period

剛完成培植期



Upon Maturity 成熟後

Example 3 - Nathan Road near Mody Road

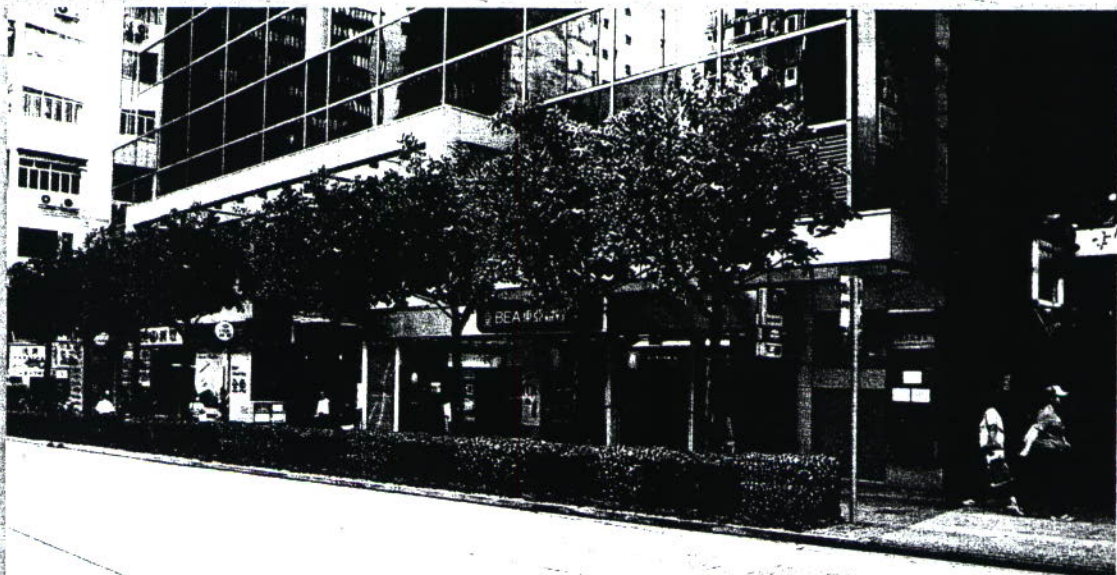
例子三 - 彌敦道近麼地道

Before Planting 種植前



Upon Completion of Establishment Period

剛完成培植期

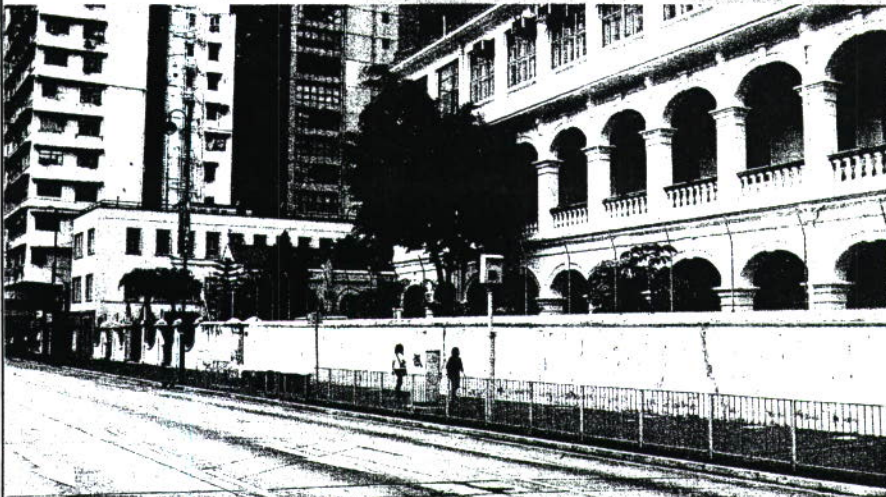


Upon Maturity 成熟後

Example 4 - Nathan Road near Austin Road

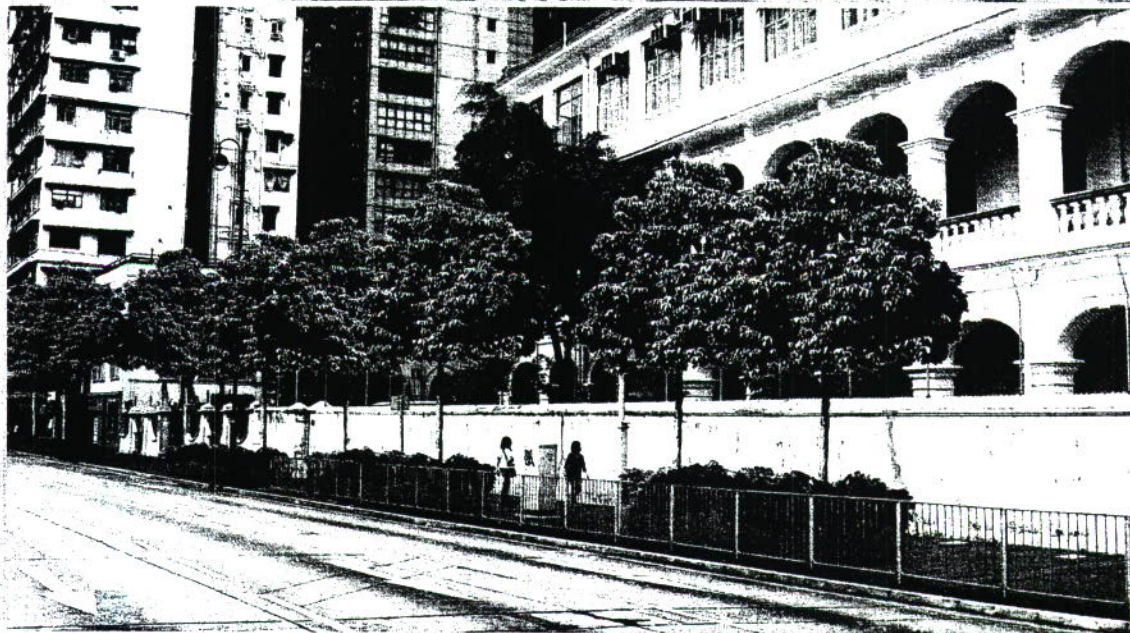
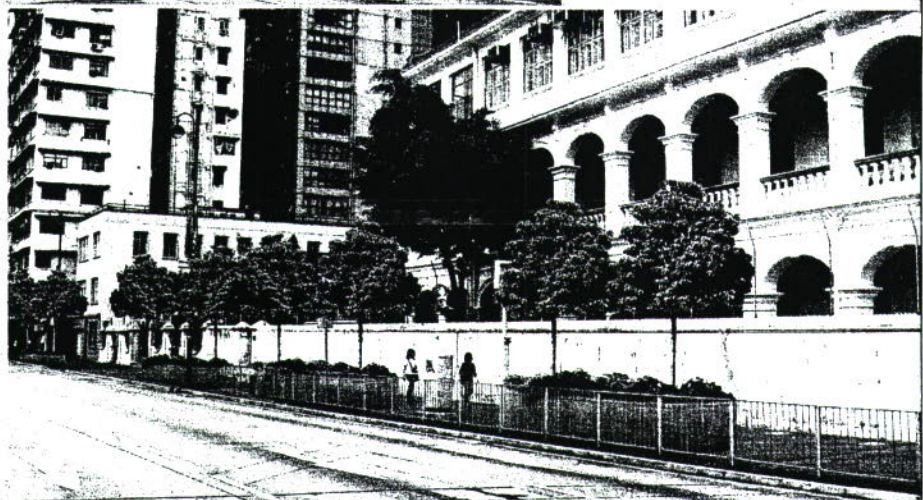
例子四 - 彌敦道近柯士甸道

Before Planting 種植前



Upon Completion of
Establishment Period

剛完成培植期

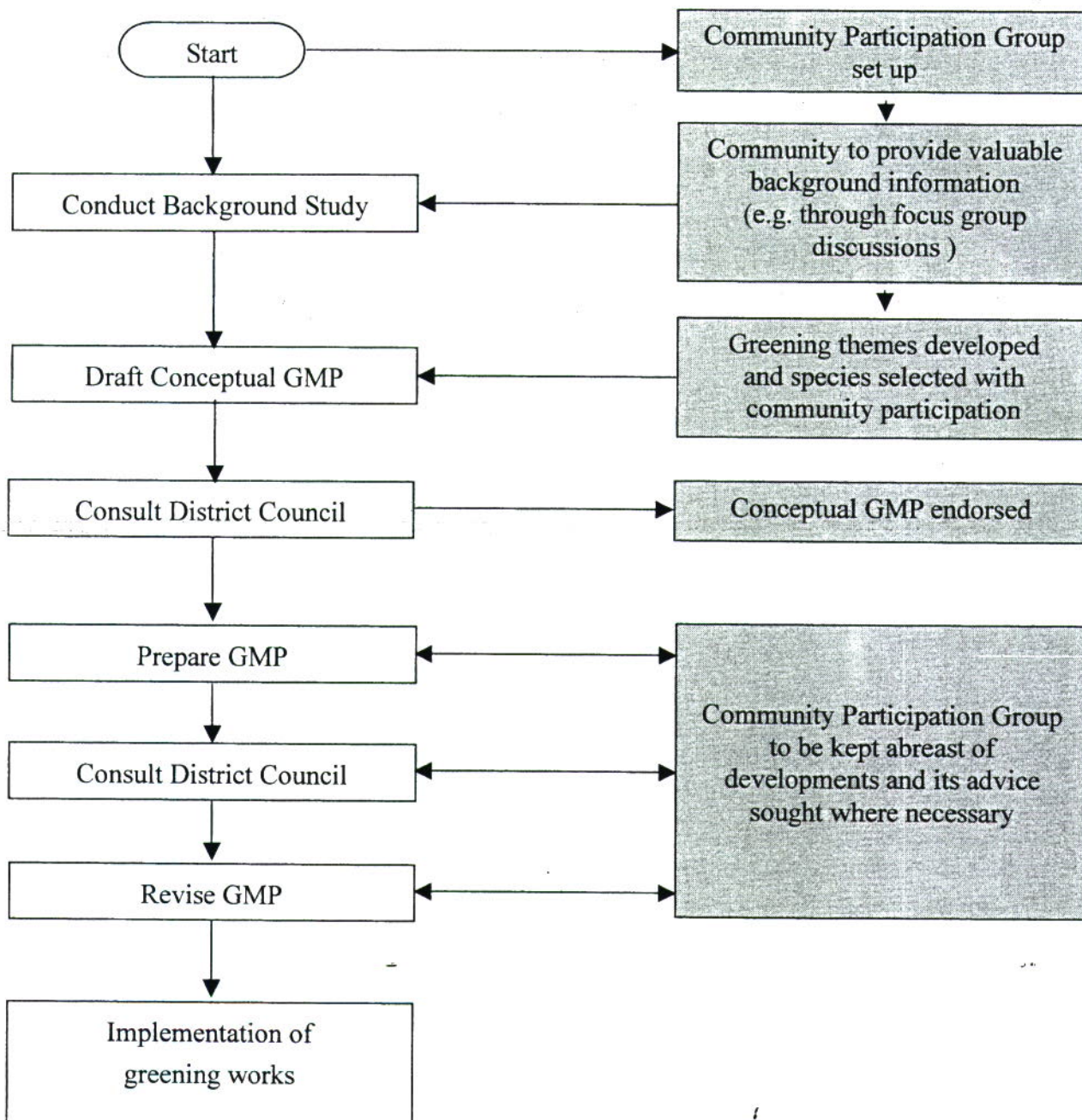


Upon Maturity 成熟後

Example 5 - Chatham Road South

例子五 - 漆咸道南

Enhanced Partnering Approach in Developing GMPs



Legend:



- Traditional Approach



- Enhanced Partnering Approach



圖例 LEGEND:-

建議的旺角及油麻地
綠化總綱圖研究的覆蓋範圍
STUDY AREA FOR THE PROPOSED
GREENING MASTER PLANS FOR
MONG KOK AND YAU MA TEI

已完成的尖沙咀
綠化總綱圖的覆蓋範圍
AREA COVERED BY THE COMPLETED
GREENING MASTER PLAN FOR
TSIM SHA TSUI

版權所有，不得翻印
COPYRIGHT RESERVED

名稱 title	姓名 name	簽署 initial	日期 date	編號 no.	日期 date	內容摘要 description	核對 checked	核准 approved
工務計劃項目第 35CG 號 九龍西綠化總綱圖 - 研究及工程 PWP ITEM No. 35CG GREENING MASTER PLAN FOR KOWLOON WEST - STUDIES & WORKS	繪圖 drawn	C P SUEN		圖則編號 drawing no. HQS G170		土木工程拓展署 CIVIL ENGINEERING AND DEVELOPMENT DEPARTMENT		
	核對 checked	K M CHIU					比例 scale 1:50000	
	核准 approved	P M CHAN						
辦事處 office	總部 HEADQUARTERS			CEDD				