

**Greening Master Plan
for Mong Kok and Yau Ma Tei**

Purpose

The purpose of this paper is to brief Members of the Greening Master Plan (GMP) study for Mong Kok and Yau Ma Tei, and to seek Members' views on enhancing public participation in the study.

Background

2. We completed the GMP study for Tsim Sha Tsui as shown in **Appendix 1** in May 2005. Implementation of the proposed greening measures has commenced in mid 2006. It is anticipated that most of the planting works will be completed by March 2007. Please refer to **Appendix 2** for photos of some of the completed works.

3. In the YTM DC Paper No. 67/2006 submitted in August 2006, we mentioned that we would develop a GMP for Mong Kok and Yau Ma Tei. Now, funding has been approved by the Legislative Council, and the consultancy study has commenced in mid January 2007. We expect that the GMP and the associated detailed design for greening proposal will be completed in March 2008. The consultancy study area is shown in **Appendix 1**.

Mong Kok & Yau Ma Tei Greening Master Plan

4. Coping with the character and needs of an area, a GMP seeks to define the overall greening framework of the area, and serves as a guide for all people involved in planning, design and implementation of greening works. In addition to identifying suitable locations for planting, the GMP will establish the greening themes and propose suitable planting species.

5. GMP study is divided into the following 4 main stages :

- (i) Background study
- (ii) Formulation of conceptual GMPs
- (iii) Development of the recommended GMP

(iv) Detailed design

6. As greening opportunities may arise in different time frames, the GMP will include short-term, medium-term and long-term greening measures :

- Short-term - greening measures which match the district layout, do not conflict with existing land use and traffic arrangements, and can be implemented within 1 to 2 years;
- Medium-term - greening measures which have to be implemented in association with other development proposals, including urban renewal and redevelopment projects; and
- Long-term - greening measures which are visionary proposals such as green corridors. In order to accomplish such visionary proposals, long-term participation and cooperation of all sectors to overcome problems such as land shortage are necessary.

District Participation Group and Community Forum

7. To ensure that the GMP will meet the needs of the area, and to promote acceptance of the GMP by the community, we propose to establish a partnering relationship with the District Council through setting up of a District Participation Group. We intend that the District Participation Group will advise us on the development of the GMP and examine the recommendations of the consultant and opinions of the public. We propose that the District Participation Group comprises three to five District Councilors and involves the consultant and the following departments:

- District Office (Yau Tsim Mong)
- Civil Engineering and Development Department
- Other relevant departments

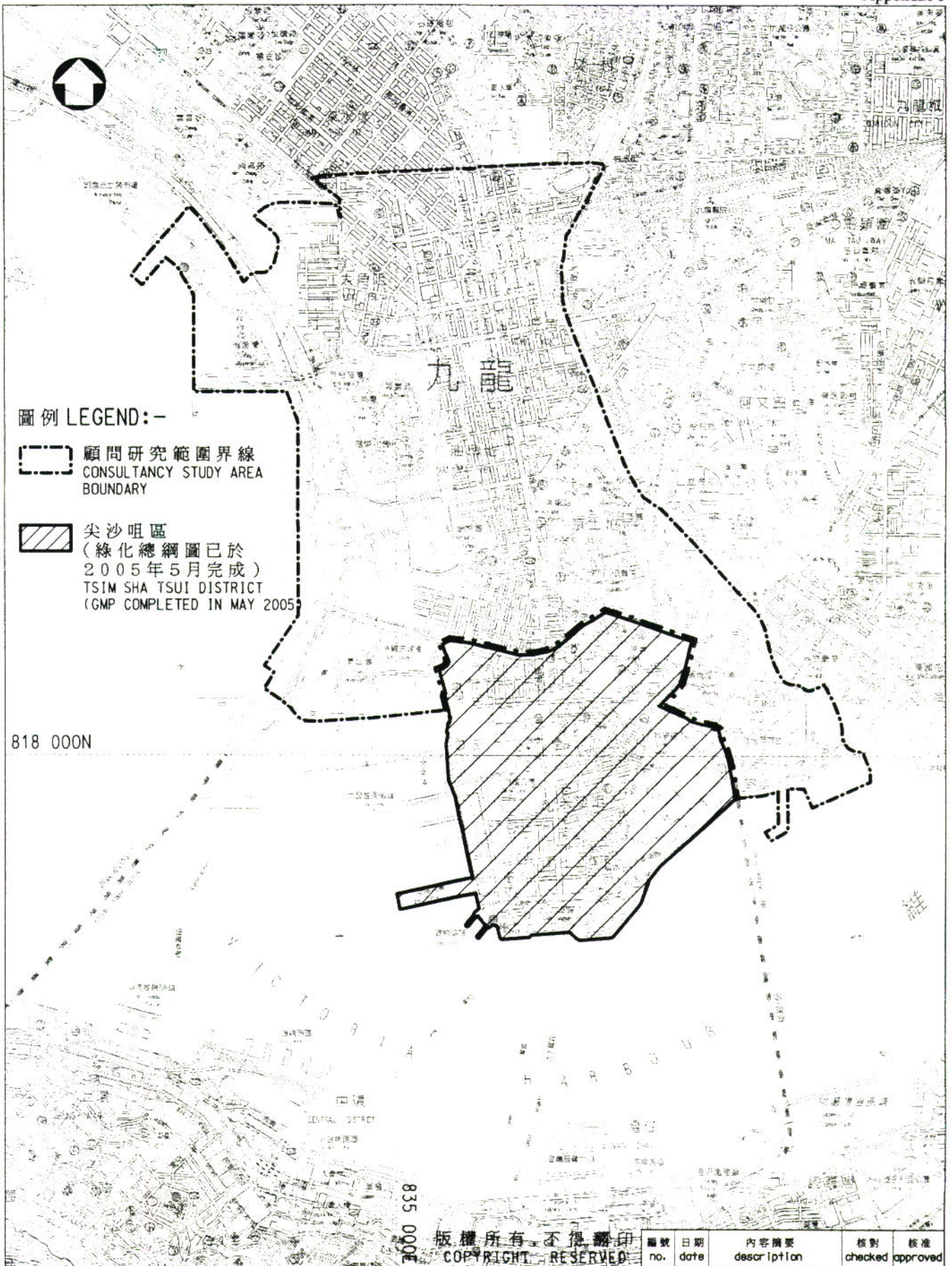
The GMP, prepared jointly with the District Participation Group, will be submitted to the District Council for discussion, whose views will be taken into account before the GMP is adopted.

8. We also propose to conduct a community forum during the formulation of the conceptual GMPs to seek public's views on greening. We will discuss the details of the community forum with the District Participation Group in due course.

Conclusion


9. We will follow up Members' comments on this paper and suggestions about the content of the GMP. We also look forward to the nomination of District Councilors to the District Participation Group by the District Council and partnering with the District Participation Group soon.

Civil Engineering and Development Department
February 2007



圖例 LEGEND:-

 顧問研究範圍界線
CONSULTANCY STUDY AREA
BOUNDARY

 尖沙咀區
(綠化總綱圖已於
2005年5月完成)
TSIM SHA TSUI DISTRICT
(GMP COMPLETED IN MAY 2005)

818 000N

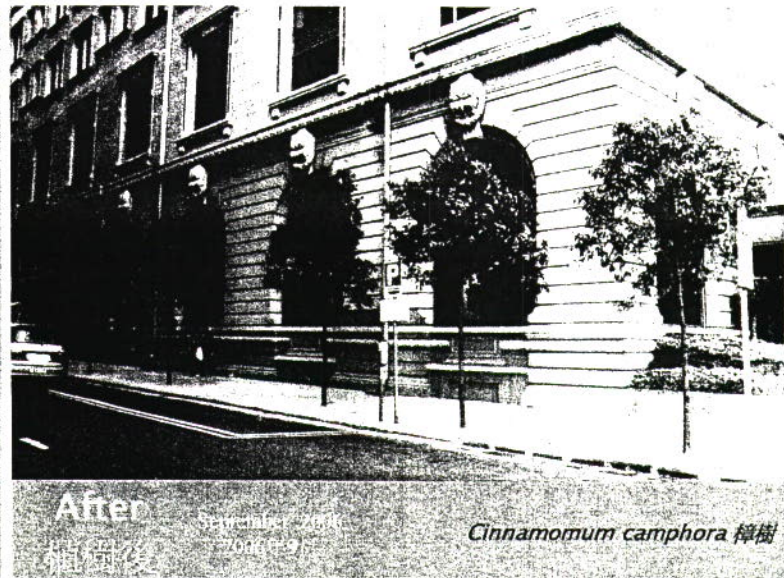
835 000E

版權所有 不得翻印
COPYRIGHT RESERVED

名稱 title	姓名 name	簽署 initial	日期 date	編號 no.	日期 date	內容摘要 description	核對 checked	核准 approved
旺角及油麻地 綠化總綱圖研究範圍 GREENING MASTER PLAN FOR MONG KOK AND YAU MA TEI STUDY AREA	繪圖 drawn	S. S. CHING		圖則編號 drawing no.		HQS G207		比例 scale
	核對 checked		2/1/07				1:25000	
	核准 approved							
辦事處 office	總部 HEADQUARTERS			 土木工程拓展署 CIVIL ENGINEERING AND DEVELOPMENT DEPARTMENT				



Before
植樹前



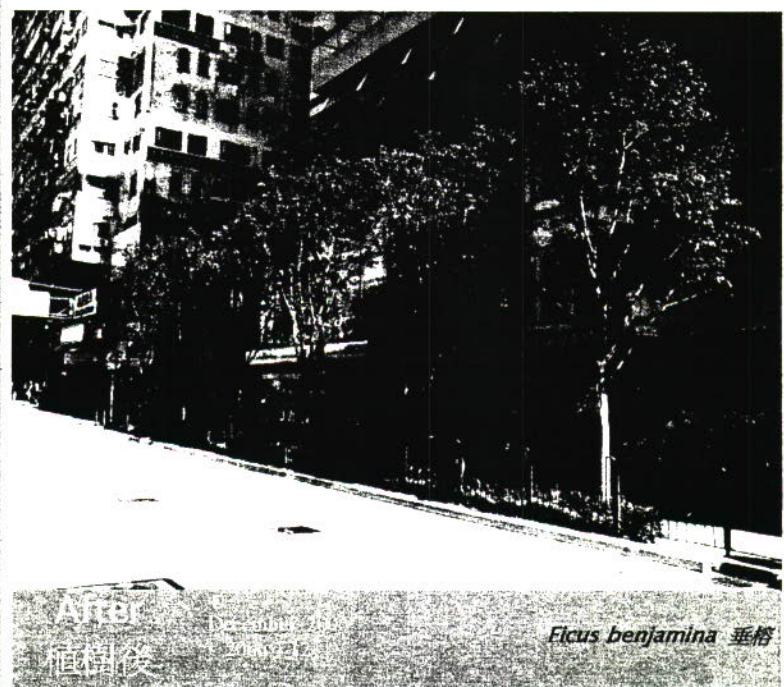
After
植樹後

Cinnamomum camphora 樟樹

Hankow Road 漢口道



Before
植樹前



After
植樹後

Ficus benjamina 垂榕

Nathan Road in front of Holiday Inn Hotel 彌敦道 假日酒店門外



Before
植樹前

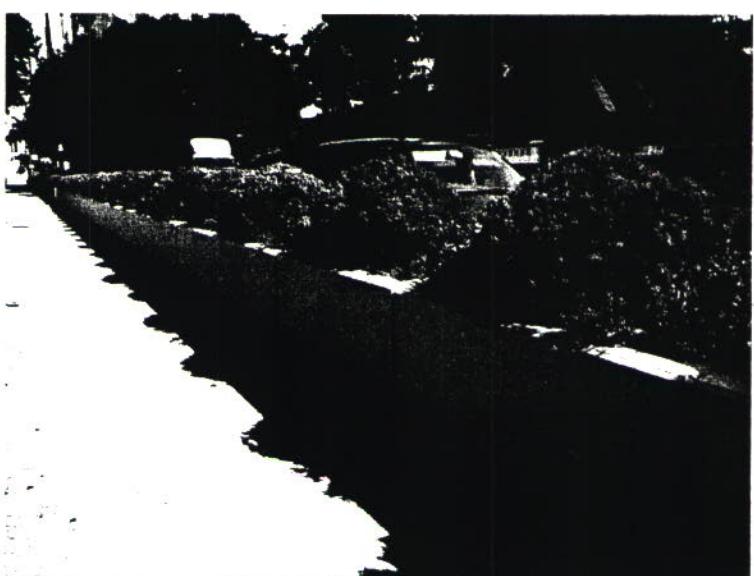


After
植樹後
December 2016
Khaya senegalensis 非洲楝
Grevillea robusta 銀樺

Jordan Road King George V Memorial Park 佐敦道 佐治五世紀念公園



Before
植樹前



After
植樹後
November 2016
Juniperus chinensis 龍柏

Nathan Road Central Median 彌敦道中央分隔帶



Before
植樹前



After

Juniperus chinensis 龍柏
Bougainvillea spectabilis 簕杜鵑

Austin Road Victoria Towers 柯士甸道港景峰



Before
植樹前



After

Xanthostemon chrysanthus 金蒲桃
Cinnamomun camphora 樟

Salisbury Road Wing On Plaza 梳士巴利道永安廣場



Before
植樹前



After
植樹後

December 2006
2006年12月

Xanthostemon chrysanthus 金蒲桃
Cinnamomun camphora 樟

Salisbury Road Wing On Plaza 梳士巴利道永安廣場



Before
植樹前



After
植樹後

December 2006
2006年12月

Terminalia mantalyi 細葉欖仁
Delonix regia 鳳凰木

Cheong Wan Road Near HK Polytechnic University 暢運道近香港理工大學