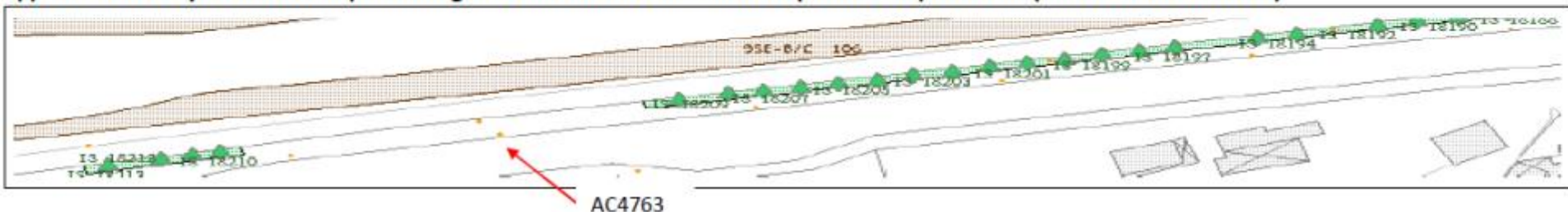



Proposal of improvement works for the uneven pavement and cycle track at Tung Chung Road

(I) Portion of cycle track with protruding tree roots from roadside trees planted on pavement (about 20 nos. of trees)





Railing to be raised-up

Deck over or narrow the portion of cycle track

Proposed improvement works including:

Option 1 : To narrow portion of cycle track where deck over is not feasible; (TD & HYD)

Option 2 : To deck over portion of affected cycle track; (TD & HYD), in parallel, to raise up railing of the retaining wall; (DSD/ CEDD)

LCSD will arrange appropriate root and crown pruning to facilitate the construction if necessary.



Deck-over or narrow the portion of cycle track

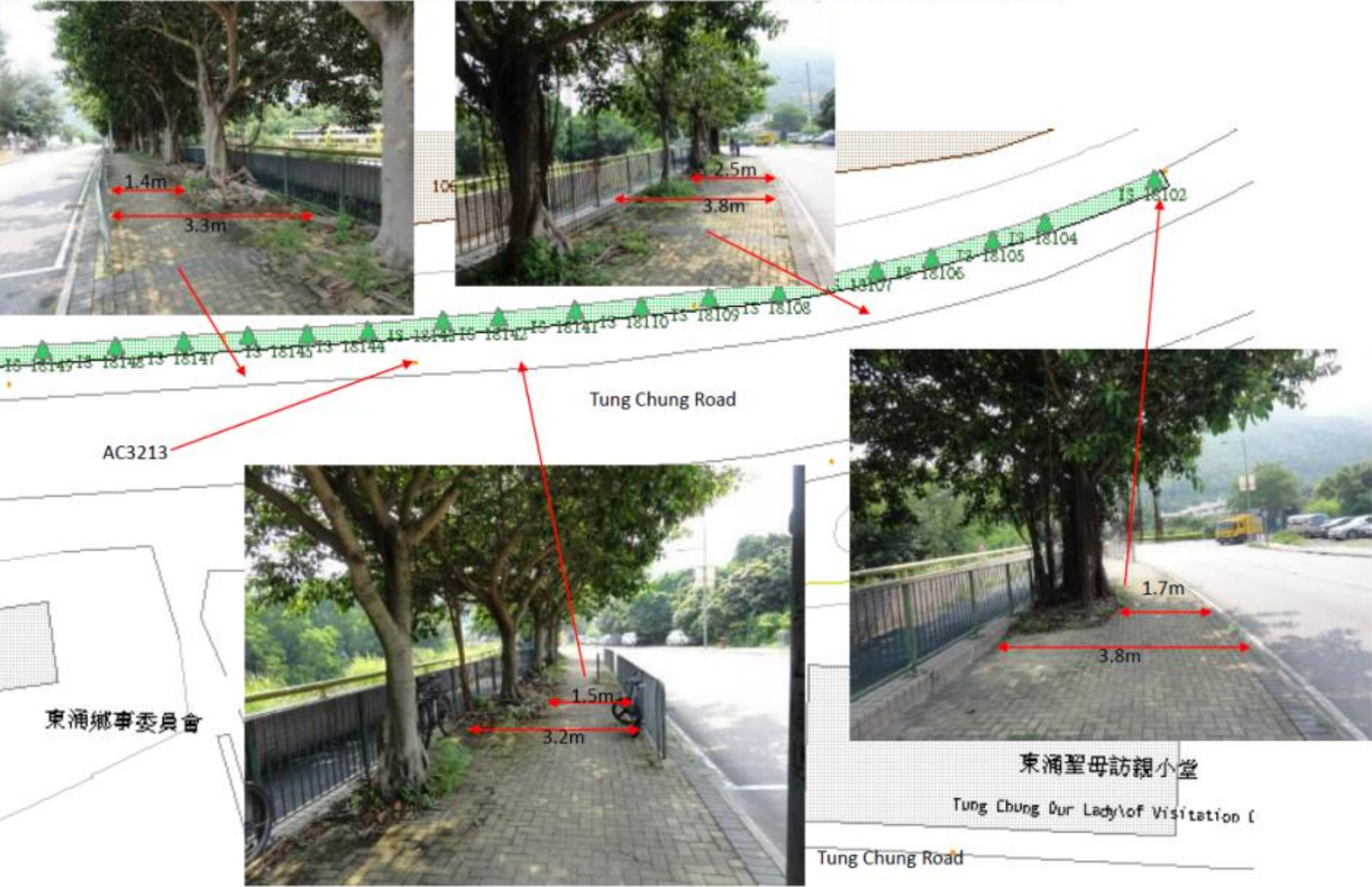
Proposed improvement works including:

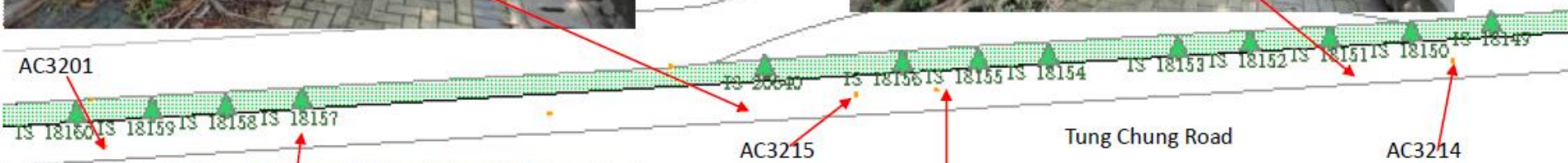
Option 1 : To narrow portion of cycle track where deck over is not feasible; (TD & HYD)

Option 2 : To deck over portion of affected cycle track; (TD & HYD), in parallel, to raise up railing of the retaining wall; (DSD/ CEDD)

LCSD will arrange appropriate root and crown pruning to facilitate the construction if necessary.

(II) Portion of pavement with protruding tree roots from roadside trees planted on the pavement (about 58 nos. of trees)







AC3203

AC3202

東涌道

AC3204

Copyright reserved.





Tung Chung Road

Proposed improvement works including:

- (i) To enlarge and integrate existing tree pits into linear kerb planters to provide additional space for tree roots growth; (TD & HYD)
 - (ii) To install root barrier along periphery of linear planters be informed to restrict tree roots growth; (TD & HYD)
- LCSD will arrange appropriate root and crown pruning to facilitate the construction if necessary.



Illustration of proposal

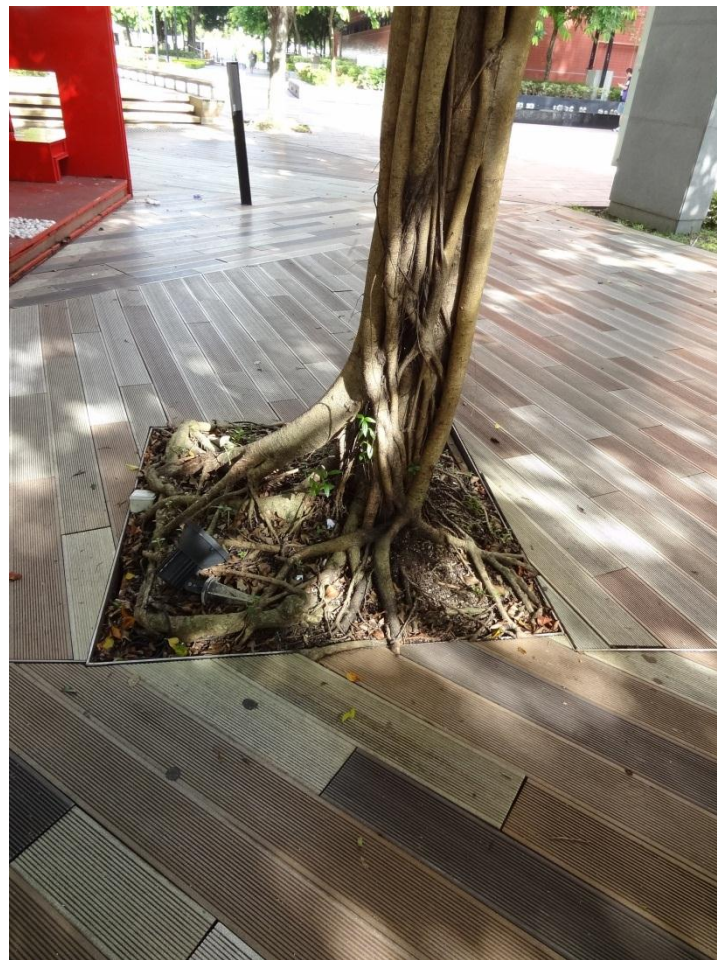
Enlargement and integration of existing tree pits into linear kerb planters



粉嶺樓遊樂場

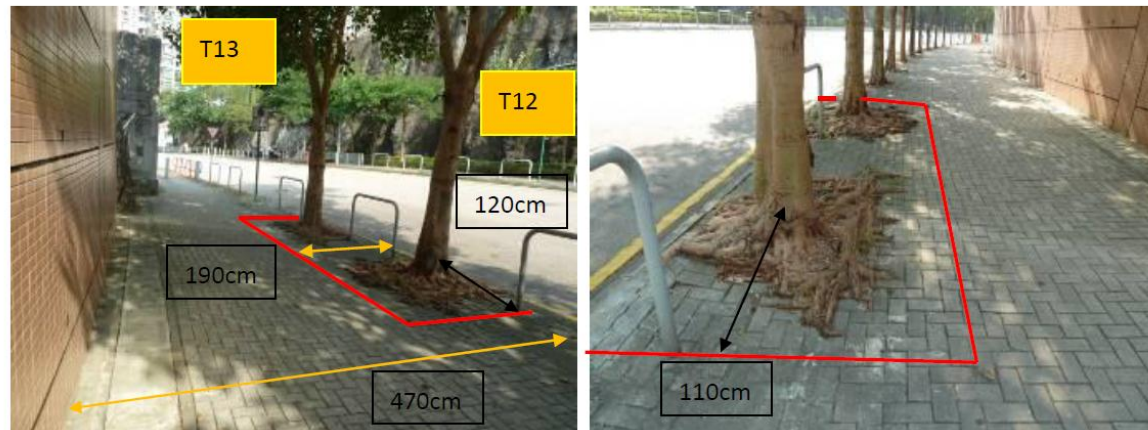


沙田大會堂



將軍澳翠嶺路

T12 - T13 : Form a planting strip for T12 – T13 - before



190cm is measured from the kerb to the edge

120cm is measured from the trunk of T12 to the edge

110cm is measured from the trunk of T13 to the edge

T12 – T13 – after

