

**KTDC Housing and Development Planning Committee Projects Progress Report**

Up to May 2026

Project Code	Project Title/ Estate Name/ Housing Type	Construction Budget (Million)	Development Type	Residential flat number	Carparking number	Population	Programme		Progress / Remarks
							Commencement Date	Completion Date	
KT29NR	Tak Tin Street  (Lam Tin Estate Lam Yat House)  PRH	-	Public housing, welfare facilities (Child Care Centre), Public Transport Interchange, Gateball Court	Approx. 495 No. of Blocks: 1	-	Approx. 560	July 2024	2027	<ul style="list-style-type: none"> <li>● Superstructure works was commenced in July 2024.</li> <li>● Contact Person: Ms. Christina PY NG (2129 3916)</li> <li>● Conceptual Plan: Annex 1</li> <li>● Related Paper: 觀塘區議會文件第4/2020號 (07.05.2020)</li> </ul>
KT19NR	Hiu Ming Street  (Hiu Yan Estate)  PRH	---	Public housing, retail and welfare facilities (Early Education Training Centre, Special Child Care Centre, Hostel for Severely Mentally Handicapped Persons, Day Activity Centre, Counselling Centre for Psychotropic Substance Abusers, Residential Care Home for the Elderly and Day Care Unit)	Approx, 1,080 No. of Blocks: 2	Residential car parking spaces: 36 (including 2 visitor car parking and 2 accessible parking spaces)  4 LGV car parking spaces  15 Motorcycle parking spaces  1 Welfare Facilities Parking (24-Seater Van) Hourly parking: 3	Approx. 3,030	Dec 2018 (Reprovisioning of Recreational Facilities)	2026	<ul style="list-style-type: none"> <li>● Reprovisioning of Recreational Facilities was completed in Oct 2020</li> <li>● Superstructure works (Public Housing) is anticipated to be completed in 2026.</li> <li>● Contact Person: Ms. Jane LUK (General enquiries) (2761 7314)</li> <li>● Site Layout Plan: Annex 1</li> <li>● Related Paper: 觀塘區議會文件第 1/2017 號 (17.1.2017)</li> </ul>

**KTDC Housing and Development Planning Committee Projects Progress Report**

Up to May 2026

KT22NH	Pik Wan Road Site A  (Estate name: TBC)  HOS	-	Public Housing, welfare/ health/ education facilities (Child Care Centre, Centre for Home Care Services for Frail Elderly Persons, Sub-base for the Neighbourhood Elderly Centre, General Out-patient Clinic, Child Assessment Centre, Kindergarten)	Approx. 2,360 No. of Blocks: 4	Residential car parking spaces: 178 (including 4 disabled car parking spaces  Motorcycle parking spaces: 22  Hourly parking: 20	Approx. 6,600	Mar 2023	2029	<ul style="list-style-type: none"> <li>● Contractor took over the site and commenced the foundation works in March 2023</li> <li>● Superstructure works was commenced in November 2025.</li> <li>● Contact Person: Mr. Kevin YAM (General enquiries and superstructure works site matters) (2129 3462)</li> <li>● Conceptual Plan: Annex 1</li> <li>● Related Paper: 觀塘區議會房屋事務委員會文件第06/2019號(21.05.2019)</li> </ul>
KT17NH	Pik Wan Road Site B  (Ko Hei Court)  HOS	-	Public housing, welfare facilities (Residential Care Home for the Elderly cum Day Care Unit)	Approx. 864 No. of Block: 1	Residential car parking spaces: 63 (including 2 disabled car parking spaces  Motorcycle parking spaces: 8  Hourly parking: 5	Approx. 2,420	Oct 2023	2028	<ul style="list-style-type: none"> <li>● Superstructure works was commenced in September 2024.</li> <li>● Contact Person: Mr Derek TAM (General enquiries and site matters) (2129 3429)</li> <li>● Conceptual Plan: Annex 1</li> <li>● Related Paper: 觀塘區議會房屋事務委員會文件第06/2019號(21.05.2019)</li> </ul>

**KTDC Housing and Development Planning Committee Projects Progress Report**

Up to May 2026

KT27NF-02	Wang Chiu Road Phase 2  (Shing Chi Court)  Housing Type: GSH	-	Public housing, welfare facilities (Day Activity Centre, Neighbourhood Elderly Centre Sub-base, Office Base of On-site Pre-school Rehabilitation Services, Special Child Care Centre)	1,467 No. of Blocks: 2	Residential car parking spaces: 76 (including 2 disabled car parking spaces)  LGV car parking spaces: 7  Motorcycle parking spaces: 19  Hourly parking: 10	Approx. 4,250	Dec 2020	2026	<ul style="list-style-type: none"> <li>● Contractor took over the site and commenced the works in December 2020</li> <li>● Contact Person: Ms. WS Li, Grace (General enquiries and site matters) (2761 6621)</li> <li>● Conceptual Plan: Annex 1</li> <li>● Related Paper: 觀塘區議會房屋事務委員會文件第20/2018號 (20.11.2018)</li> </ul>
KT30RH	Yip On Factory Estate  (Estate name: TBC)  Housing Type: HOS	3421	Public housing, welfare, education facilities and retail Facilities (Neighbourhood Elderly Centre, Residential Care Home for the Elderly cum Day Care Unit, Home Care Services for Frail Elderly Persons, Office base of On-site Pre-school Rehabilitation Services, Supported Hostel for Mentally Handicapped Persons and Supported Hostel for Persons in Mental	2,268 No. of Blocks: 5	Residential car parking spaces: 178 (including 3 disabled car parking spaces)  Retail car parking spaces: 11 (including 1 disabled car parking spaces)	Approx. 6,125	Feb 2024	2028	<ul style="list-style-type: none"> <li>● Foundation works was commenced in Feb 2024.</li> <li>● Contact Person: Mr. Takki YIU (Site matters) (2761 7919) Mr. Marco LAW (General enquiries) (2129 3634)</li> <li>● Conceptual Plan: Annex 1</li> <li>● Related Paper: 觀塘區議會文件第 28/2021 號 (9.9.2021)</li> </ul>

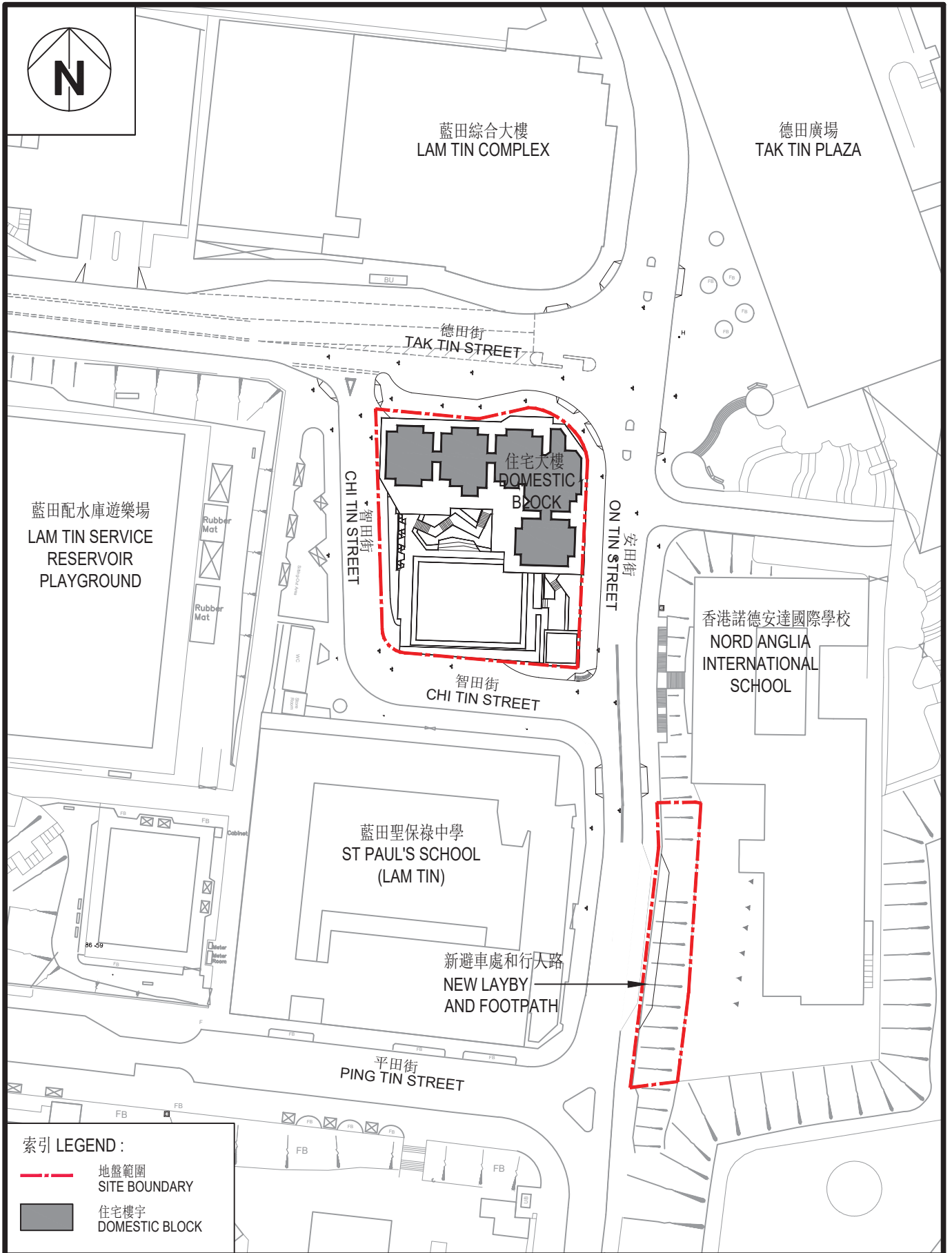
**KTDC Housing and Development Planning Committee Projects Progress Report**

Up to May 2026

			Recovery.		LGV car parking spaces: 9				
					Motorcycle parking spaces: 21				
					Hourly parking: 36				

Remarks:

1. Except otherwise stated, the commencement date means the commencement date of foundation works.
2. For HOS/GSH projects which will be completed in 2025/26 financial year, according to the Sales Brochures / Sales Brochures to be issued, the Estimated Date of Completion is provided as the completion date. For projects to be completed after 2025/26 financial year, the completion date will be written as Year only.
3. ( ) If the date as stated in the 'Programme' column is different from last report, the date as stated in last report will be shown in bracket ( ).

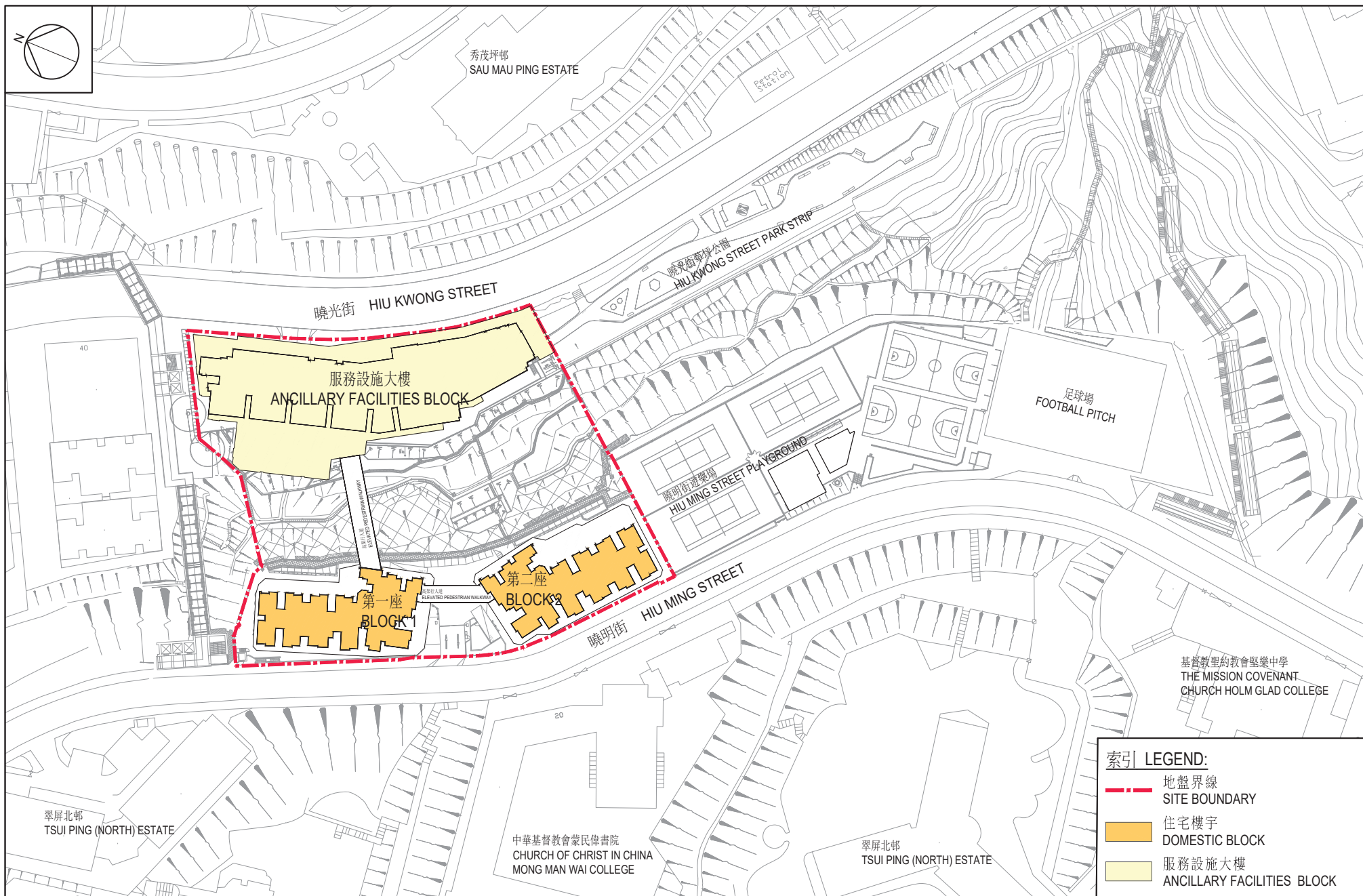


觀塘德田街公營房屋發展計劃 - 概念設計圖  
PUBLIC HOUSING DEVELOPMENT AT TAK TIN STREET, KWUN TONG  
- CONCEPTUAL PLAN

房屋署  
HOUSING DEPARTMENT

1:1000 (A4)

日期 DATE: 03/2024



PROJECT TITLE  
**曉明街公營房屋發展計劃 - 地盤平面圖**  
**PUBLIC HOUSING DEVELOPMENT AT HIU MING STREET - SITE LAYOUT PLAN**



房屋署  
HOUSING DEPARTMENT

比例 SCALE

1:1500 (A4)

日期 DATE

21 February 2024



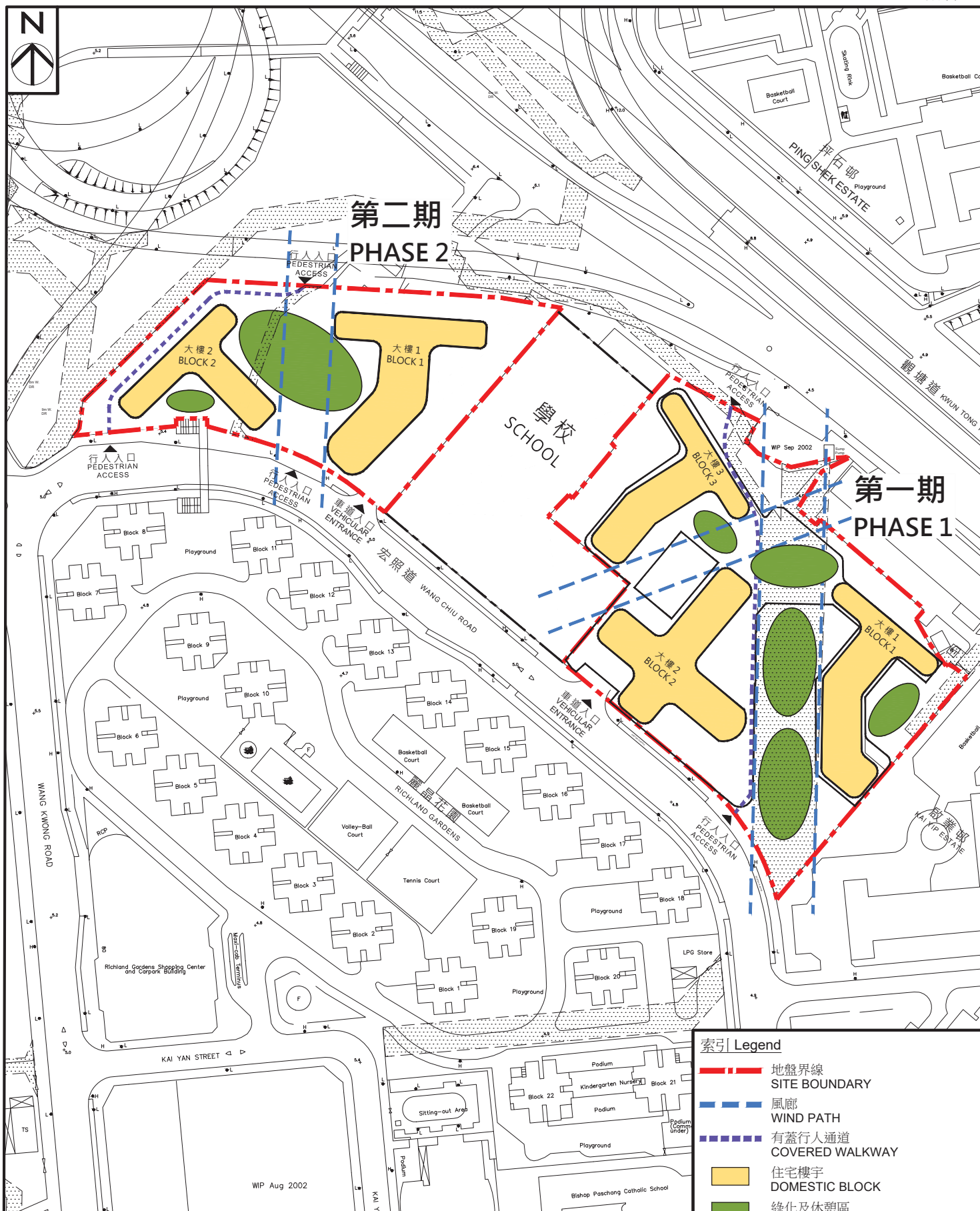
--- 擬建公營房地盤界線  
PROPOSED PUBLIC HOUSING SITE BOUNDARY

油塘碧雲道地盤甲及地盤乙公營房屋發展項目 - 概念平面圖  
PROPOSED PUBLIC HOUSING DEVELOPMENT  
AT PIK WAN ROAD SITE A AND SITE B, YAU TONG  
-- CONCEPTUAL PLAN

**房屋署**  
HOUSING DEPARTMENT

附件一  
ANNEX 1

日期 DATE  
01/2024



宏照道公營房屋發展計劃第一及二期  
 概念設計圖  
 PUBLIC HOUSING DEVELOPMENT AT  
 WANG CHIU ROAD PHASES 1 & 2  
 CONCEPTUAL PLAN

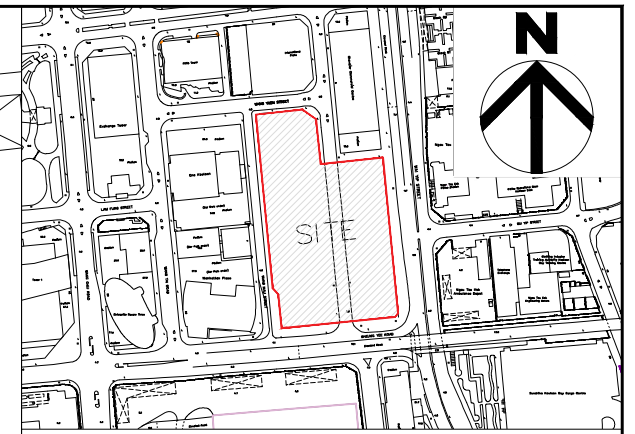
- 索引 Legend
- 地盤界線 SITE BOUNDARY
  - 風廊 WIND PATH
  - 有蓋行人通道 COVERED WALKWAY
  - 住宅樓宇 DOMESTIC BLOCK
  - 綠化及休憩區 GREENERY & RECREATION AREA
  - 渠務及水務保留地 DRAINAGE AND WATER WORKS RESERVE

房屋署  
 HOUSING DEPARTMENT



附件一  
 Annex 1

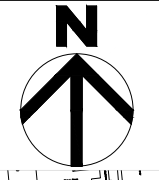
日期 DATE:  
 11. 2020

SCALE 1:2000 (A4)



**LEGEND:**

-  SITE BOUNDARY
-  DOMESTIC BLOCK



九龍灣業安工廠大廈公營房屋發展  
**PUBLIC HOUSING DEVELOPMENT AT YIP ON FACTORY ESTATE**

 房屋署  
**HOUSING DEPARTMENT**

DRAWING NO. KT30/SITE/A/LO-01      日期 DATE APR 2024

SCALE 1:800 (A3)