

NORTH DISTRICT COUNCIL – 2025



Progress Report on Major Projects in North District



NORTH DEVELOPMENT OFFICE
CIVIL ENGINEERING AND
DEVELOPMENT DEPARTMENT
APRIL 2025

Progress Report on Major Projects in North District
(Apr 2025)

<u>CONTENT</u>	<u>Page</u>
(1) Infrastructure Works in North District	1 - 25
(2) Other Works in North District	26 - 40
(3) Community, Leisure & Cultural Facilities in North District	41 - 52

Infrastructure Works in North District

April 2025

Item No. & Cat.	Project Title	Estimated Cost (\$M)	Policy Sec. & Agency	Commence- ment Date (M/Y)	Completion Date (M/Y)	Description/ Remark	Progress/ Existing Condition
772CL Cat. A	Advance Site Formation and Engineering Infrastructure Works at Kwu Tung North New Development Area (KTN NDA) and Fanling North New Development Area (FLN NDA) - Detailed Design and Site Investigation	340.8	SDEV CEDD	11/2014	3/2022	The scope of the project mainly comprises site formation and engineering infrastructure works for the first phase development of KTN and FLN NDA with the first population intake of private development by end 2022 and public housing by 2026.	All seven works contracts of the First Phase Works (i.e. advance and first stage works) commenced since September 2019 with target completion by 2026. Site formation works and engineering infrastructure works are in progress. Formed lands have been handed over to relevant parties for residential development.
747CL Cat. A	Advance Site Formation and Engineering Infrastructure Works at Kwu Tung North New Development Area and Fanling North New Development Area	17,320.1		9/2019	12/2026		
759CL Cat. A	First Stage of Site Formation and Engineering Infrastructure at Kwu Tung North New Development Area and Fanling North New Development Area	896.4		12/2019	12/2025		
835CL Cat. A	Remaining phase of site formation and engineering infrastructure works at Kwu Tung North new development area and Fanling North new development area – detailed design and site investigation	764.5		12/2019	2024	The scope of the project mainly comprises site formation and engineering infrastructure works for the remaining phase development of KTN and	The detailed design of site formation and infrastructure works under remaining phase of the NDA development commenced from

Infrastructure Works in North District

April 2025

Item No. & Cat.	Project Title	Estimated Cost (\$M)	Policy Sec. & Agency	Commence- ment Date (M/Y)	Completion Date (M/Y)	Description/ Remark	Progress/ Existing Condition
828CL Cat. A	Remaining phase of site formation and engineering infrastructure works at Kwu Tung North new development area and Fanling North new development area – construction	30.167.9		7/2024	12/2031	FLN NDA.	December 2019 to July 2020. Gazettes under road and sewerage ordinances were published in September 2022. The works contracts of the Remaining Phase Works has commenced progressively since July 2024 with target completion by 2031.

Infrastructure Works in North District

April 2025

Item No. & Cat.	Project Title	Estimated Cost (\$M)	Policy Sec. & Agency	Commence- ment Date (M/Y)	Completion Date (M/Y)	Description/ Remark	Progress/ Existing Condition
	<div style="display: flex; justify-content: space-between;"> <div style="width: 48%;"> <p>圖例 LEGEND</p> <ul style="list-style-type: none"> --- 山頂北新發展區界線 BOUNDARY OF KWU TUNG NORTH NEW DEVELOPMENT AREA --- 前期工程 ADVANCE WORKS --- 擬議道路及相關工程 PROPOSED ROADWORKS AND ASSOCIATED WORKS --- 擬議中區議會大樓及相關工程 PROPOSED NCHE BUILDING AND ASSOCIATED WORKS --- 擬議污水收集系統 PROPOSED SEWERAGE WORKS --- 第一期工程 FIRST STAGE WORKS <p>位置圖 LOCATION PLAN</p> </div> <div style="width: 48%;"> <p>圖例 LEGEND</p> <ul style="list-style-type: none"> --- 粉嶺北新發展區界線 BOUNDARY OF FANLING NORTH NEW DEVELOPMENT AREA --- 前期工程 ADVANCE WORKS --- 擬議道路及相關工程 PROPOSED ROADWORKS AND ASSOCIATED WORKS --- 擬議污水收集系統 PROPOSED SEWERAGE WORKS --- 第一期工程 FIRST STAGE WORKS <p>位置圖 LOCATION PLAN</p> </div> </div>						
	<p align="center"><u>Layout Plans for Advance Works and First Stage Works at Kwu Tung North New Development Area</u></p>						
	<p align="center"><u>Layout Plans for Advance Works and First Stage Works at Fanling North New Development Area</u></p>						

Infrastructure Works in North District

April 2025

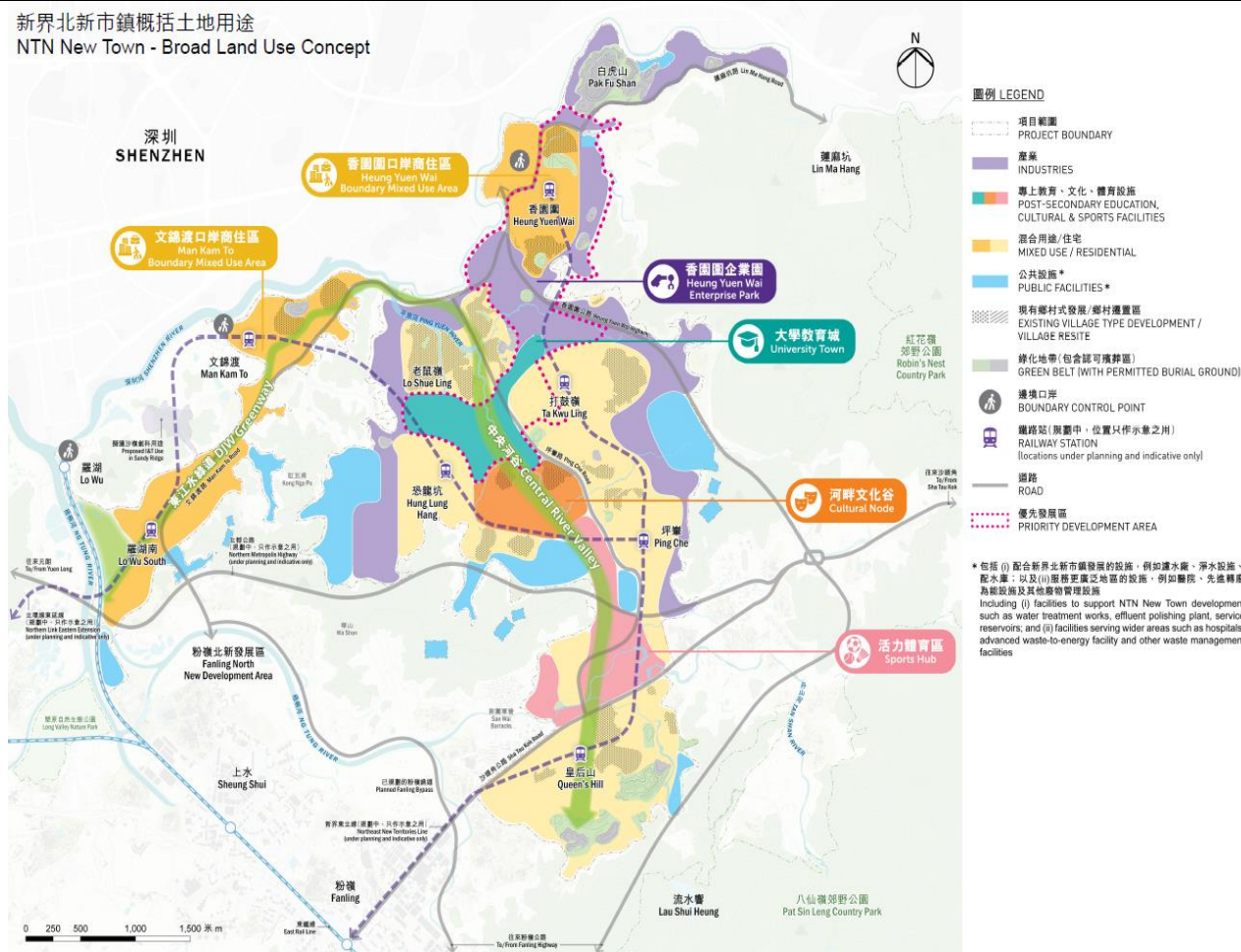
[illegible]

Infrastructure Works in North District

April 2025

Item No. & Cat.	Project Title	Estimated Cost (\$M)	Policy Sec. & Agency	Commencement Date (M/Y)	Completion Date (M/Y)	Description/ Remark	Progress/ Existing Condition
854CL Cat. A	Remaining Phase Development of the New Territories North (NTN) – Planning and Engineering Study for NTN New Town and Man Kam To	200.8	SDEV CEDD & PlanD	10/2021	12/2026 (Tentative)	The scope of the study comprises a planning and engineering study on land use planning together with the associated public engagement and various technical and engineering assessments for NTN New Town (including Lo Wu/ Man Kam To).	The Government announced the development proposal for the NTN New Town in late December 2024, and completed the public engagement exercise in mid-March 2025. Taking into account the public views received in the public engagement exercise, we will further refine the development proposal and conduct relevant technical assessments and engineering design. The government-led site formation and infrastructure works in the Priority Development Area of NTN New Town may commence in 2028/29 the earliest, while the site formation and infrastructure works for the proposed relocation of food control facilities at Heung Yuen Wai may commence even earlier.

新界北新市鎮概括土地用途
NTN New Town - Broad Land Use Concept



Infrastructure Works in North District

April 2025

Item No. & Cat.	Project Title	Estimated Cost (\$M)	Policy Sec. & Agency	Commence-ment Date (M/Y)	Completion Date (M/Y)	Description/ Remark	Progress/ Existing Condition
793CL Cat. A	Site formation and infrastructure works for police facilities in Kong Nga Po	1,913.0	SDEV CEDD	11/2019	10/2023	<p>The project mainly comprises: -</p> <p>(a) Site formation of about 19 hectares of land for accommodating various police facilities to be co-located at Kong Nga Po;</p> <p>(b) Upgrading of existing Kong Nga Po Road of about 1.7 kilometres long to a 7.3 metres wide single two-lane carriageway and construction of a new vehicular bridge of about 100 m long; and</p> <p>(c) Associated infrastructure works, including road works, waterworks, drainage and sewerage works, geotechnical works, landscaping works, environmental mitigation measures, and other ancillary works.</p>	<p>Construction works commenced in November 2019 the formed land was handed over to ArchSD on 23 December 2022 for their construction of police facilities Moreover, the upgrading of Kong Nga Po Road was substantially completed in October 2023. The remaining establishment works are targeted to be completed in February 2026.</p>
<div><div><div><div><div>圖例: LEGEND:</div><div><div><div><div>--- 施工區界限 LIMIT OF WORKS AREA</div><div>--- 擬議紅瓦甫警察設施用地 PROPOSED POLICE FACILITIES IN KONG NGA PO SITE</div><div>--- 擬議紅瓦甫路改善工程 PROPOSED KONG NGA PO ROAD IMPROVEMENT WORKS</div><div>--- 擬議紅瓦甫警察設施內道路 PROPOSED INTERNAL ROAD AT POLICE FACILITIES IN KONG NGA PO</div><div>--- 擬議擋土牆 PROPOSED RETAINING WALL</div><div>--- 擬議削土 / 填土斜坡 PROPOSED CUT / FILL SLOPE</div></div></div></div><div></div><div><div><div>羅湖 LO WU</div><div>上水 SHEUNG SHUI</div><div>文錦渡路 MAN KAM TO ROAD</div><div>文錦渡路 MAN KAM TO ROAD</div><div>文錦渡路 MAN KAM TO ROAD</div><div>文錦渡路 MAN KAM TO ROAD</div><div>文錦渡路 MAN KAM TO ROAD</div><div>文錦渡路 MAN KAM TO ROAD</div><div>文錦渡路 MAN KAM TO ROAD</div><div>文錦渡路 MAN KAM TO ROAD</div><div>文錦渡路 MAN KAM TO ROAD</div><div>文錦渡路 MAN KAM TO ROAD</div><div>文錦渡路 MAN KAM TO ROAD</div><div>文錦渡路 MAN KAM TO ROAD</div><div>文錦渡路 MAN KAM TO ROAD</div><div>文錦渡路 MAN KAM TO ROAD</div><div>文錦渡路 MAN KAM TO ROAD</div><div>文錦渡路 MAN KAM TO ROAD</div><div>文錦渡路 MAN KAM TO ROAD</div><div>文錦渡路 MAN KAM TO ROAD</div><div>文錦渡路 MAN KAM TO ROAD</div><div>文錦渡路 MAN KAM TO ROAD</div><div>文錦渡路 MAN KAM TO ROAD</div><div>文錦渡路 MAN KAM TO ROAD</div><div>文錦渡路 MAN KAM TO ROAD</div><div>文錦渡路 MAN KAM TO ROAD</div><div>文錦渡路 MAN KAM TO ROAD</div><div>文錦渡路 MAN KAM TO ROAD</div><div>文錦渡路 MAN KAM TO ROAD</div><div>文錦渡路 MAN KAM TO ROAD</div><div>文錦渡路 MAN KAM TO ROAD</div><div>文錦渡路 MAN KAM TO ROAD</div><div>文錦渡路 MAN KAM TO ROAD</div><div>文錦渡路 MAN KAM TO ROAD</div><div>文錦渡路 MAN KAM TO ROAD</div><div>文錦渡路 MAN KAM TO ROAD</div><div>文錦渡路 MAN KAM TO ROAD</div><div>文錦渡路 MAN KAM TO ROAD</div><div>文錦渡路 MAN KAM TO ROAD</div><div>文錦渡路 MAN KAM TO ROAD</div><div>文錦渡路 MAN KAM TO ROAD</div><div>文錦渡路 MAN KAM TO ROAD</div><div>文錦渡路 MAN KAM TO ROAD</div><div>文錦渡路 MAN KAM TO ROAD</div><div>文錦渡路 MAN KAM TO ROAD</div><div>文錦渡路 MAN KAM TO ROAD</div><div>文錦渡路 MAN KAM TO ROAD</div><div>文錦渡路 MAN KAM TO ROAD</div><div>文錦渡路 MAN KAM TO ROAD</div><div>文錦渡路 MAN KAM TO ROAD</div><div>文錦渡路 MAN KAM TO ROAD</div><div>文錦渡路 MAN KAM TO ROAD</div><div>文錦渡路 MAN KAM TO ROAD</div><div>文錦渡路 MAN KAM TO ROAD</div><div>文錦渡路 MAN KAM TO ROAD</div><div>文錦渡路 MAN KAM TO ROAD</div><div>文錦渡路 MAN KAM TO ROAD</div><div>文錦渡路 MAN KAM TO ROAD</div><div>文錦渡路 MAN KAM TO ROAD</div><div>文錦渡路 MAN KAM TO ROAD</div><div>文錦渡路 MAN KAM TO ROAD</div><div>文錦渡路 MAN KAM TO ROAD</div><div>文錦渡路 MAN KAM TO ROAD</div><div>文錦渡路 MAN KAM TO ROAD</div><div>文錦渡路 MAN KAM TO ROAD</div><div>文錦渡路 MAN KAM TO ROAD</div><div>文錦渡路 MAN KAM TO ROAD</div><div>文錦渡路 MAN KAM TO ROAD</div><div>文錦渡路 MAN KAM TO ROAD</div><div>文錦渡路 MAN KAM TO ROAD</div><div>文錦渡路 MAN KAM TO ROAD</div><div>文錦渡路 MAN KAM TO ROAD</div><div>文錦渡路 MAN KAM TO ROAD</div><div>文錦渡路 MAN KAM TO ROAD</div><div>文錦渡路 MAN KAM TO ROAD</div><div>文錦渡路 MAN KAM TO ROAD</div><div>文錦渡路 MAN KAM TO ROAD</div><div>文錦渡路 MAN KAM TO ROAD</div><div>文錦渡路 MAN KAM TO ROAD</div><div>文錦渡路 MAN KAM TO ROAD</div><div>文錦渡路 MAN KAM TO ROAD</div><div>文錦渡路 MAN KAM TO ROAD</div><div>文錦渡路 MAN KAM TO ROAD</div><div>文錦渡路 MAN KAM TO ROAD</div><div>文錦渡路 MAN KAM TO ROAD</div><div>文錦渡路 MAN KAM TO ROAD</div><div>文錦渡路 MAN KAM TO ROAD</div><div>文錦渡路 MAN KAM TO ROAD</div><div>文錦渡路 MAN KAM TO ROAD</div><div>文錦渡路 MAN KAM TO ROAD</div><div>文錦渡路 MAN KAM TO ROAD</div><div>文錦渡路 MAN KAM TO ROAD</div><div>文錦渡路 MAN KAM TO ROAD</div><div>文錦渡路 MAN KAM TO ROAD</div><div>文錦渡路 MAN KAM TO ROAD</div><div>文錦渡路 MAN KAM TO ROAD</div><div>文錦渡路 MAN KAM TO ROAD</div><div>文錦渡路 MAN KAM TO ROAD</div><div>文錦渡路 MAN KAM TO ROAD</div><div>文錦渡路 MAN KAM TO ROAD</div><div>文錦渡路 MAN KAM TO ROAD</div><div>文錦渡路 MAN KAM TO ROAD</div><div>文錦渡路 MAN KAM TO ROAD</div><div>文錦渡路 MAN KAM TO ROAD</div><div>文錦渡路 MAN KAM TO ROAD</div><div>文錦渡路 MAN KAM TO ROAD</div><div>文錦渡路 MAN KAM TO ROAD</div><div>文錦渡路 MAN KAM TO ROAD</div><div>文錦渡路 MAN KAM TO ROAD</div><div>文錦渡路 MAN KAM TO ROAD</div><div>文錦渡路 MAN KAM TO ROAD</div><div>文錦渡路 MAN KAM TO ROAD</div><div>文錦渡路 MAN KAM TO ROAD</div><div>文錦渡路 MAN KAM TO ROAD</div><div>文錦渡路 MAN KAM TO ROAD</div><div>文錦渡路 MAN KAM TO ROAD</div><div>文錦渡路 MAN KAM TO ROAD</div><div>文錦渡路 MAN KAM TO ROAD</div><div>文錦渡路 MAN KAM TO ROAD</div><div>文錦渡路 MAN KAM TO ROAD</div><div>文錦渡路 MAN KAM TO ROAD</div><div>文錦渡路 MAN KAM TO ROAD</div><div>文錦渡路 MAN KAM TO ROAD</div><div>文錦渡路 MAN KAM TO ROAD</div><div>文錦渡路 MAN KAM TO ROAD</div><div>文錦渡路 MAN KAM TO ROAD</div><div>文錦渡路 MAN KAM TO ROAD</div><div>文錦渡路 MAN KAM TO ROAD</div><div>文錦渡路 MAN KAM TO ROAD</div><div>文錦渡路 MAN KAM TO ROAD</div><div>文錦渡路 MAN KAM TO ROAD</div><div>文錦渡路 MAN KAM TO ROAD</div><div>文錦渡路 MAN KAM TO ROAD</div><div>文錦渡路 MAN KAM TO ROAD</div><div>文錦渡路 MAN KAM TO ROAD</div><div>文錦渡路 MAN KAM TO ROAD</div><div>文錦渡路 MAN KAM TO ROAD</div><div>文錦渡路 MAN KAM TO ROAD</div><div>文錦渡路 MAN KAM TO ROAD</div><div>文錦渡路 MAN KAM TO ROAD</div><div>文錦渡路 MAN KAM TO ROAD</div><div>文錦渡路 MAN KAM TO ROAD</div><div>文錦渡路 MAN KAM TO ROAD</div><div>文錦渡路 MAN KAM TO ROAD</div><div>文錦渡路 MAN KAM TO ROAD</div><div>文錦渡路 MAN KAM TO ROAD</div><div>文錦渡路 MAN KAM TO ROAD</div><div>文錦渡路 MAN KAM TO ROAD</div><div>文錦渡路 MAN KAM TO ROAD</div><div>文錦渡路 MAN KAM TO ROAD</div><div>文錦渡路 MAN KAM TO ROAD</div><div>文錦渡路 MAN KAM TO ROAD</div><div>文錦渡路 MAN KAM TO ROAD</div><div>文錦渡路 MAN KAM TO ROAD</div><div>文錦渡路 MAN KAM TO ROAD</div><div>文錦渡路 MAN KAM TO ROAD</div><div>文錦渡路 MAN KAM TO ROAD</div><div>文錦渡路 MAN KAM TO ROAD</div><div>文錦渡路 MAN KAM TO ROAD</div><div>文錦渡路 MAN KAM TO ROAD</div><div>文錦渡路 MAN KAM TO ROAD</div><div>文錦渡路 MAN KAM TO ROAD</div><div>文錦渡路 MAN KAM TO ROAD</div><div>文錦渡路 MAN KAM TO ROAD</div><div>文錦渡路 MAN KAM TO ROAD</div><div>文錦渡路 MAN KAM TO ROAD</div><div>文錦渡路 MAN KAM TO ROAD</div><div>文錦渡路 MAN KAM TO ROAD</div><div>文錦渡路 MAN KAM TO ROAD</div><div>文錦渡路 MAN KAM TO ROAD</div><div>文錦渡路 MAN KAM TO ROAD</div><div>文錦渡路 MAN KAM TO ROAD</div><div>文錦渡路 MAN KAM TO ROAD</div><div>文錦渡路 MAN KAM TO ROAD</div><div>文錦渡路 MAN KAM TO ROAD</div><div>文錦渡路 MAN KAM TO ROAD</div><div>文錦渡路 MAN KAM TO ROAD</div><div>文錦渡路 MAN KAM TO ROAD</div><div>文錦渡路 MAN KAM TO ROAD</div><div>文錦渡路 MAN KAM TO ROAD</div><div>文錦渡路 MAN KAM TO ROAD</div><div>文錦渡路 MAN KAM TO ROAD</div><div>文錦渡路 MAN KAM TO ROAD</div><div>文錦渡路 MAN KAM TO ROAD</div><div>文錦渡路 MAN KAM TO ROAD</div><div>文錦渡路 MAN KAM TO ROAD</div><div>文錦渡路 MAN KAM TO ROAD</div><div>文錦渡路 MAN KAM TO ROAD</div><div>文錦渡路 MAN KAM TO ROAD</div><div>文錦渡路 MAN KAM TO ROAD</div><div>文錦渡路 MAN KAM TO ROAD</div><div>文錦渡路 MAN KAM TO ROAD</div><div>文錦渡路 MAN KAM TO ROAD</div><div>文錦渡路 MAN KAM TO ROAD</div><div>文錦渡路 MAN KAM TO ROAD</div><div>文錦渡路 MAN KAM TO ROAD</div><div>文錦渡路 MAN KAM TO ROAD</div><div>文錦渡路 MAN KAM TO ROAD</div><div>文錦渡路 MAN KAM TO ROAD</div><div>文錦渡路 MAN KAM TO ROAD</div><div>文錦渡路 MAN KAM TO ROAD</div><div>文錦渡路 MAN KAM TO ROAD</div><div>文錦渡路 MAN KAM TO ROAD</div><div>文錦渡路 MAN KAM TO ROAD</div><div>文錦渡路 MAN KAM TO ROAD</div><div>文錦渡路 MAN KAM TO ROAD</div><div>文錦渡路 MAN KAM TO ROAD</div><div>文錦渡路 MAN KAM TO ROAD</div><div>文錦渡路 MAN KAM TO ROAD</div><div>文錦渡路 MAN KAM TO ROAD</div><div>文錦渡路 MAN KAM TO ROAD</div><div>文錦渡路 MAN KAM TO ROAD</div><div>文錦渡路 MAN KAM TO ROAD</div><div>文錦渡路 MAN KAM TO ROAD</div><div>文錦渡路 MAN KAM TO ROAD</div><div>文錦渡路 MAN KAM TO ROAD</div><div>文錦渡路 MAN KAM TO ROAD</div><div>文錦渡路 MAN KAM TO ROAD</div><div>文錦渡路 MAN KAM TO ROAD</div><div>文錦渡路 MAN KAM TO ROAD</div><div>文錦渡路 MAN KAM TO ROAD</div><div>文錦渡路 MAN KAM TO ROAD</div><div>文錦渡路 MAN KAM TO ROAD</div><div>文錦渡路 MAN KAM TO ROAD</div><div>文錦渡路 MAN KAM TO ROAD</div><div>文錦渡路 MAN KAM TO ROAD</div><div>文錦渡路 MAN KAM TO ROAD</div><div>文錦渡路 MAN KAM TO ROAD</div><div>文錦渡路 MAN KAM TO ROAD</div><div>文錦渡路 MAN KAM TO ROAD</div><div>文錦渡路 MAN KAM TO ROAD</div><div>文錦渡路 MAN KAM TO ROAD</div><div>文錦渡路 MAN KAM TO ROAD</div><div>文錦渡路 MAN KAM TO ROAD</div><div>文錦渡路 MAN KAM TO ROAD</div><div>文錦渡路 MAN KAM TO ROAD</div><div>文錦渡路 MAN KAM TO ROAD</div><div>文錦渡路 MAN KAM TO ROAD</div><div>文錦渡路 MAN KAM TO ROAD</div><div>文錦渡路 MAN KAM TO ROAD</div><div>文錦渡路 MAN KAM TO ROAD</div><div>文錦渡路 MAN KAM TO ROAD</div><div>文錦渡路 MAN KAM TO ROAD</div><div>文錦渡路 MAN KAM TO ROAD</div><div>文錦渡路 MAN KAM TO ROAD</div><div>文錦渡路 MAN KAM TO ROAD</div><div>文錦渡路 MAN KAM TO ROAD</div><div>文錦渡路 MAN KAM TO ROAD</div><div>文錦渡路 MAN KAM TO ROAD</div><div>文錦渡路 MAN KAM TO ROAD</div><div>文錦渡路 MAN KAM TO ROAD</div><div>文錦渡路 MAN KAM TO ROAD</div><div>文錦渡路 MAN KAM TO ROAD</div><div>文錦渡路 MAN KAM TO ROAD</div><div>文錦渡路 MAN KAM TO ROAD</div><div>文錦渡路 MAN KAM TO ROAD</div><div>文錦渡路 MAN KAM TO ROAD</div><div>文錦渡路 MAN KAM TO ROAD</div><div>文錦渡路 MAN KAM TO ROAD</div><div>文錦渡路 MAN KAM TO ROAD</div><div>文錦渡路 MAN KAM TO ROAD</div><div>文錦渡路 MAN KAM TO ROAD</div><div>文錦渡路 MAN KAM TO ROAD</div><div>文錦渡路 MAN KAM TO ROAD</div><div>文錦渡路 MAN KAM TO ROAD</div><div>文錦渡路 MAN KAM TO ROAD</div><div>文錦渡路 MAN KAM TO ROAD</div><div>文錦渡路 MAN KAM TO ROAD</div><div>文錦渡路 MAN KAM TO ROAD</div><div>文錦渡路 MAN KAM TO ROAD</div><div>文錦渡路 MAN KAM TO ROAD</div><div>文錦渡路 MAN KAM TO ROAD</div><div>文錦渡路 MAN KAM TO ROAD</div><div>文錦渡路 MAN KAM TO ROAD</div><div>文錦渡路 MAN KAM TO ROAD</div><div>文錦渡路 MAN KAM TO ROAD</div><div>文錦渡路 MAN KAM TO ROAD</div><div>文錦渡路 MAN KAM TO ROAD</div><div>文錦渡路 MAN KAM TO ROAD</div><div>文錦渡路 MAN KAM TO ROAD</div><div>文錦渡路 MAN KAM TO ROAD</div><div>文錦渡路 MAN KAM TO ROAD</div><div>文錦渡路 MAN KAM TO ROAD</div><div>文錦渡路 MAN KAM TO ROAD</div><div>文錦渡路 MAN KAM TO ROAD</div><div>文錦渡路 MAN KAM TO ROAD</div><div>文錦渡路 MAN KAM TO ROAD</div><div>文錦渡路 MAN KAM TO ROAD</div><div>文錦渡路 MAN KAM TO ROAD</div><div>文錦渡路 MAN KAM TO ROAD</div><div>文錦渡路 MAN KAM TO ROAD</div><div>文錦渡路 MAN KAM TO ROAD</div><div>文錦渡路 MAN KAM TO ROAD</div><div>文錦渡路 MAN KAM TO ROAD</div><div>文錦渡路 MAN KAM TO ROAD</div><div>文錦渡路 MAN KAM TO ROAD</div><div>文錦渡路 MAN KAM TO ROAD</div><div>文錦渡路 MAN KAM TO ROAD</div><div>文錦渡路 MAN KAM TO ROAD</div><div>文錦渡路 MAN KAM TO ROAD</div><div>文錦渡路 MAN KAM TO ROAD</div><div>文錦渡路 MAN KAM TO ROAD</div><div>文錦渡路 MAN KAM TO ROAD</div><div>文錦渡路 MAN KAM TO ROAD</div><div>文錦渡路 MAN KAM TO ROAD</div><div>文錦渡路 MAN KAM TO ROAD</div><div>文錦渡路 MAN KAM TO ROAD</div><div>文錦渡路 MAN KAM TO ROAD</div><div>文錦渡路 MAN KAM TO ROAD</div><div>文錦渡路 MAN KAM TO ROAD</div><div>文錦渡路 MAN KAM TO ROAD</div><div>文錦渡路 MAN KAM TO ROAD</div><div>文錦渡路 MAN KAM TO ROAD</div><div>文錦渡路 MAN KAM TO ROAD</div><div>文錦渡路 MAN KAM TO ROAD</div><div>文錦渡路 MAN KAM TO ROAD</div><div>文錦渡路 MAN KAM TO ROAD</div><div>文錦渡路 MAN KAM TO ROAD</div><div>文錦渡路 MAN KAM TO ROAD</div><div>文錦渡路 MAN KAM TO ROAD</div><div>文錦渡路 MAN KAM TO ROAD</div><div>文錦渡路 MAN KAM TO ROAD</div><div>文錦渡路 MAN KAM TO ROAD</div><div>文錦渡路 MAN KAM TO ROAD</div><div>文錦渡路 MAN KAM TO ROAD</div><div>文錦渡路 MAN KAM TO ROAD</div><div>文錦渡路 MAN KAM TO ROAD</div><div>文錦渡路 MAN KAM TO ROAD</div><div>文錦渡路 MAN KAM TO ROAD</div><div>文錦渡路 MAN KAM TO ROAD</div></div></div></div></div></div></div>							

Infrastructure Works in North District

April 2025

Item No. & Cat.	Project Title	Estimated Cost (\$M)	Policy Sec. & Agency	Commencement Date (M/Y)	Completion Date (M/Y)	Description/ Remark	Progress/ Existing Condition
7086TI Cat. B	Improvement to So Kwun Po Interchange	To be determined	STL CEDD	To be determined	To be determined	The scope of the project is to provide a direct connecting road (comprising at-grade roads, an underpass and a single two-lane flyover) of approximately 700m between San Wan Road and Pak Wo Road.	The project is at Investigation and Design Stage.
196CD Cat. A	Drainage improvement at North District- Phase 1	950.0	SDEV DSD	08/2023	2028	The scope of the project comprises the construction of about drainage improvement works at following locations: 1) Kong Ha and Sha Tau Kok Town, 2) Shek Kiu Tau, 3) Hang Tau, 4) Kai Fong Garden, 5) Kwu Tung Road and 6) Tin Ping Shan Tsuen.	The construction contract commenced on 31 August 2023 for completion in 2028. Around 23% of works were completed. The works at Kwu Tung Road was substantially completed in May 2024. The works in other locations were in progress.
434DS Cat. A	Village Sewerage in Fanling Wai, So Kwun Po and Leng Pei Tsuen, Fanling	179.7	SEE DSD	1/2021	8/2025	The scope of the project comprises construction of about 6 km long sewers in Fanling Wai, So Kwun Po and Leng Pei Tsuen.	The contract commenced in January 2021 for completion in March 2025. Around 75% of works were

Infrastructure Works in North District

April 2025

Item No. & Cat.	Project Title	Estimated Cost (\$M)	Policy Sec. & Agency	Commence- ment Date (M/Y)	Completion Date (M/Y)	Description/ Remark	Progress/ Existing Condition
							completed. The sewerage works at So Kwun Po and Leng Pei Tsuen was substantially completed in August 2022 and July 2023 respectively. The sewerage works at Fanling Wai are in progress.
462DS Cat. A	North District sewerage, Stage 1 phase 2C and Stage 2 phase 1 - Village Sewerage in Sheung Shui Heung	274.3	SEE DSD	9/2023	12/2027	The works include the construction of about 8.5km of public sewerage systems in Sheung Shui Heung including Wai Loi Tsuen, Mun Hau Tsuen, Chung Sum Tsuen, Ha Pak Tsuen, Sheung Pak Tsuen, Tai Yuen Tsuen, Hing Yan Tsuen and Po Sheung Tsuen and ancillary works.	The contract commenced in October 2023 for completion in December 2027.
392DS Cat. A	Expansion of Sha Tau Kok Sewage Treatment Works Phase 1	2,040.9	SEE DSD	11/2018	2025	The scope of the project comprises expansion of the existing sewage treatment works and construction of a 1.7km	The project commenced in November 2018 for target completion in 2025. About 80%

Infrastructure Works in North District

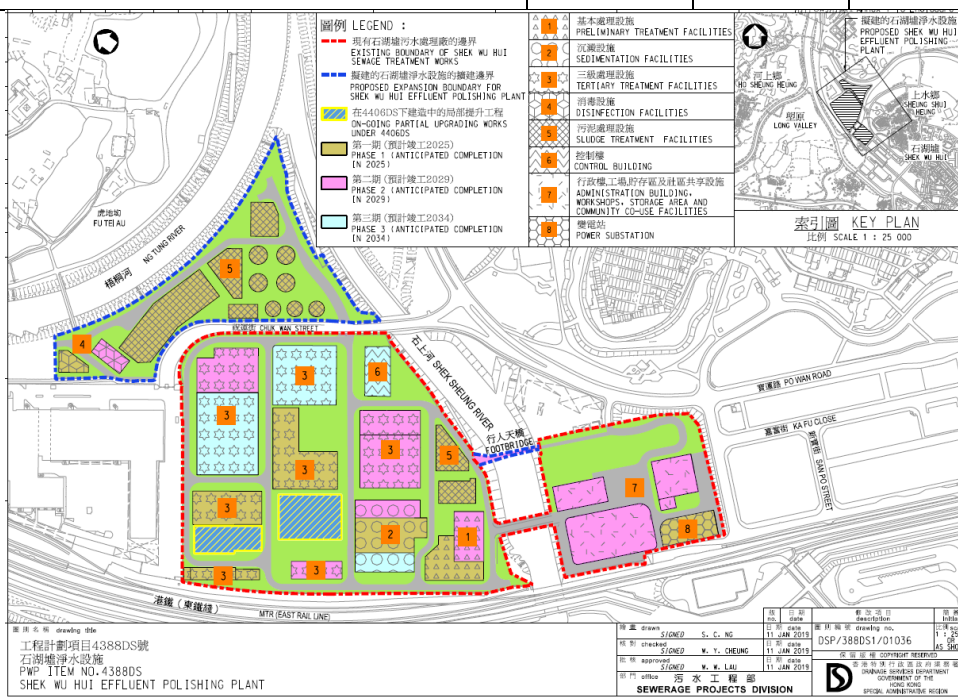
April 2025

Item No. & Cat.	Project Title	Estimated Cost (\$M)	Policy Sec. & Agency	Commence- ment Date (M/Y)	Completion Date (M/Y)	Description/ Remark	Progress/ Existing Condition
						submarine outfall. The works was carried out together with 423DS under Contract No. DC/2018/03.	of the works were completed. The construction of sewage treatment works was in progress.
457DS Cat. A	North District Sewerage, Stage 2 Part 2A – Village Sewerage in Muk Wu, New Territories	120.0	SEE DSD	8/2022	5/2027	The scope of the project comprises construction of a sewage pumping station with associated sewage rising mains and gravity sewers in Muk Wu.	The project commenced in August 2022 for target completion in May 2027. The sewerage works at Muk Wu are in progress.
409DS Cat. A	North East New Territories Sewerage System Upgrade	825.8	SEE DSD	10/2021	6/2027	The project comprises upgrading of existing sewage pumping stations and construction of associated sewage rising mains and gravity sewers.	The project commenced in October 2021. The construction works at Man Kam To Road and Fu Tei Au Road are in progress. The project is targeted for completion by Q2 2027.
414DS Cat. A	Rehabilitation of underground sewers – remaining works	306.4	SEE DSD	9/2023	9/2027	The project comprises rehabilitation works of underground sewers for about 5 km across 12	The project commenced in September 2023 for completion by Q3

Infrastructure Works in North District

April 2025

Item No. & Cat.	Project Title	Estimated Cost (\$M)	Policy Sec. & Agency	Commencement Date (M/Y)	Completion Date (M/Y)	Description/ Remark	Progress/ Existing Condition
						districts. Of which, about 360m of underground sewers will be rehabilitated in the North District.	2027.
388DS Cat A	Shek Wu Hui Effluent Polishing Plant (previously known “Shek Wu Hui Sewage Treatment Works”)	11,972.8	SEE DSD	9/2019	2034	The scope of the project comprises main works for upgrading of existing Shek Wu Hui Sewage Treatment Works in three stages to cope with the forecast sewage flow demand and to enhance its environmental performance.	The construction works are in progress. The project will be implemented by stages. The 1 st stage contracts are targeted to be completed in 2025.



Infrastructure Works in North District

April 2025

Item No. & Cat.	Project Title	Estimated Cost (\$M)	Policy Sec. & Agency	Commence-ment Date (M/Y)	Completion Date (M/Y)	Description/ Remark	Progress/ Existing Condition
6101TX Cat D	Provision of Universal Accessibility Facilities at Footbridge No. ND02 in North District	<u>Lift No. 1</u> 17.1 <u>Lift No. 2</u> 13.9	TLB HyD	<u>Lift No. 1</u> 12/2022 <u>Lift No. 2</u> 7/2021	<u>Lift No. 1</u> Q4 2025 (Tentative) <u>Lift No. 2</u> 4/2024	The project includes retrofitting of Lift No. 1 (near Sheung Shui Station) at the northern exit and Lift No. 2 (within Choi Yuen Estate) at the southern exit of the footbridge across Choi Yuen Road connecting Choi Yuen Plaza and Sheung Shui Station and the associated works.	<u>Lift No. 1</u> The lift tower works are in progress. <u>Lift No. 2</u> The lift has been completed in April 2024 and opened for public use.
<p>FIGURE 1</p> <p>NORTH</p> <p>LOCATION PLAN SCALE 1:4000</p> <p>LEGEND:</p> <ul style="list-style-type: none"> PROPOSED LIFT PROPOSED ELEVATED PLATFORM PROPOSED FOOTPATH GROUND LEVEL EXIT DECK LEVEL EXIT <p>DRAWING TITLE FOOTBRIDGE ACROSS CHOI YUEN ROAD CONNECTING CHOI YUEN PLAZA AND SHEUNG SHUI STATION (WALKWAY NO. ND02)</p> <p>EXISTING FOOTBRIDGE WALKWAY NO.: ND02</p> <p>LIFT NO. 1</p> <p>LIFT NO. 2</p> <p>CHOI YUEN ESTATE</p> <p>SHEUNG SHUI STATION</p> <p>CHOI YUEN ROAD</p> <p>YUK PO COURT</p> <p>PLAYGROUND</p> <p>BUS STOP</p> <p>EXIT A</p> <p>EXIT B</p> <p>彩園路</p> <p>上水站</p> <p>旭埔苑</p> <p>清湖閣</p> <p>明湖閣</p> <p>唐湖閣</p>							

Infrastructure Works in North District

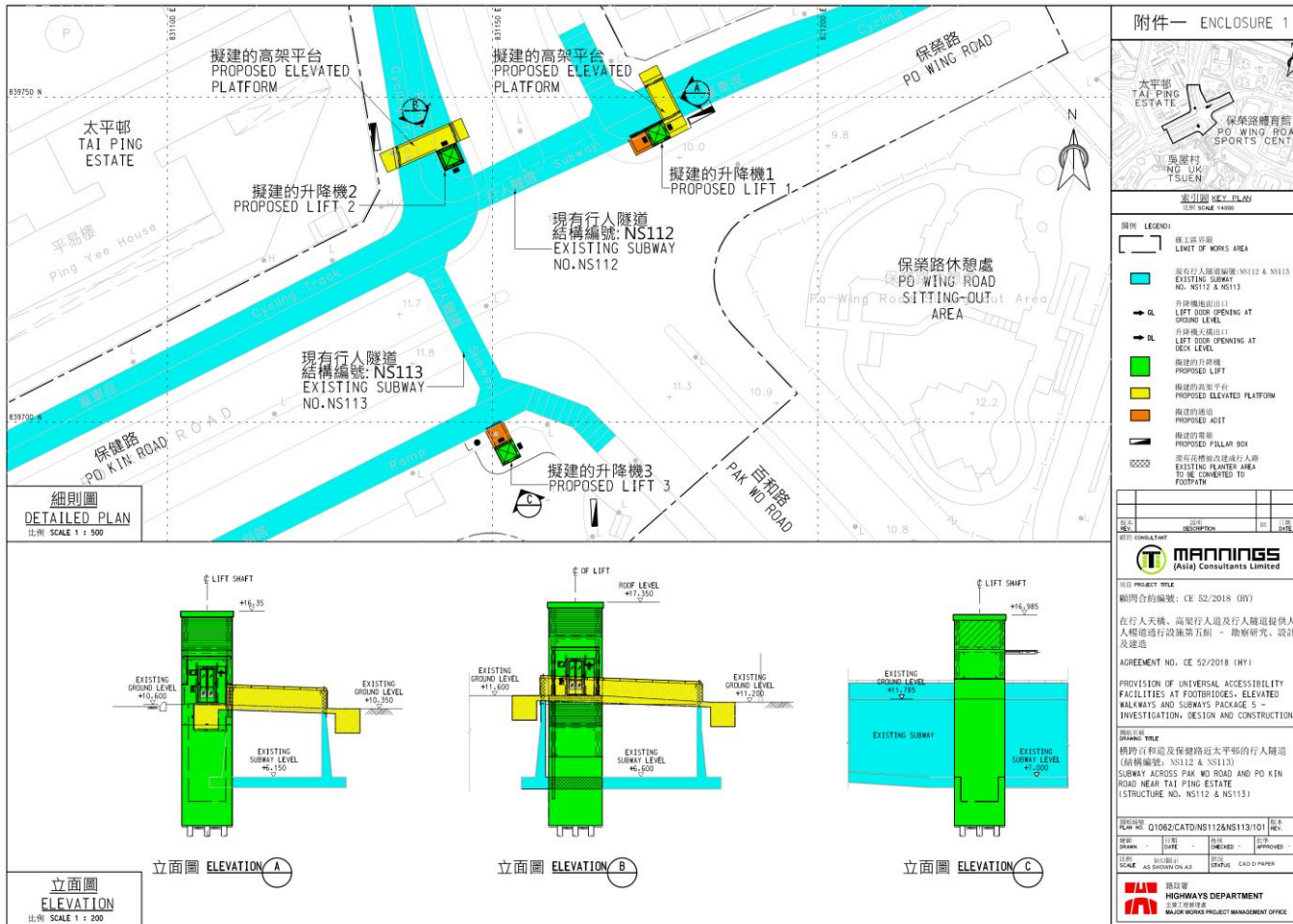
April 2025

Item No. & Cat.	Project Title	Estimated Cost (\$M)	Policy Sec. & Agency	Commencement Date (M/Y)	Completion Date (M/Y)	Description/ Remark	Progress/ Existing Condition
6101TX Cat D	Provision of Universal Accessibility Facilities at Footbridge No. ND03 in North District	13.9	TLB HyD	6/2020	12/2024	The project includes retrofitting of a lift at the footbridge across Fanling Station Road near Fanling Station and the associated works.	The lift has been completed and opened for public use in December 2024. Extension of the existing covered walkway to ND03 and the associated works are in progress.

Infrastructure Works in North District

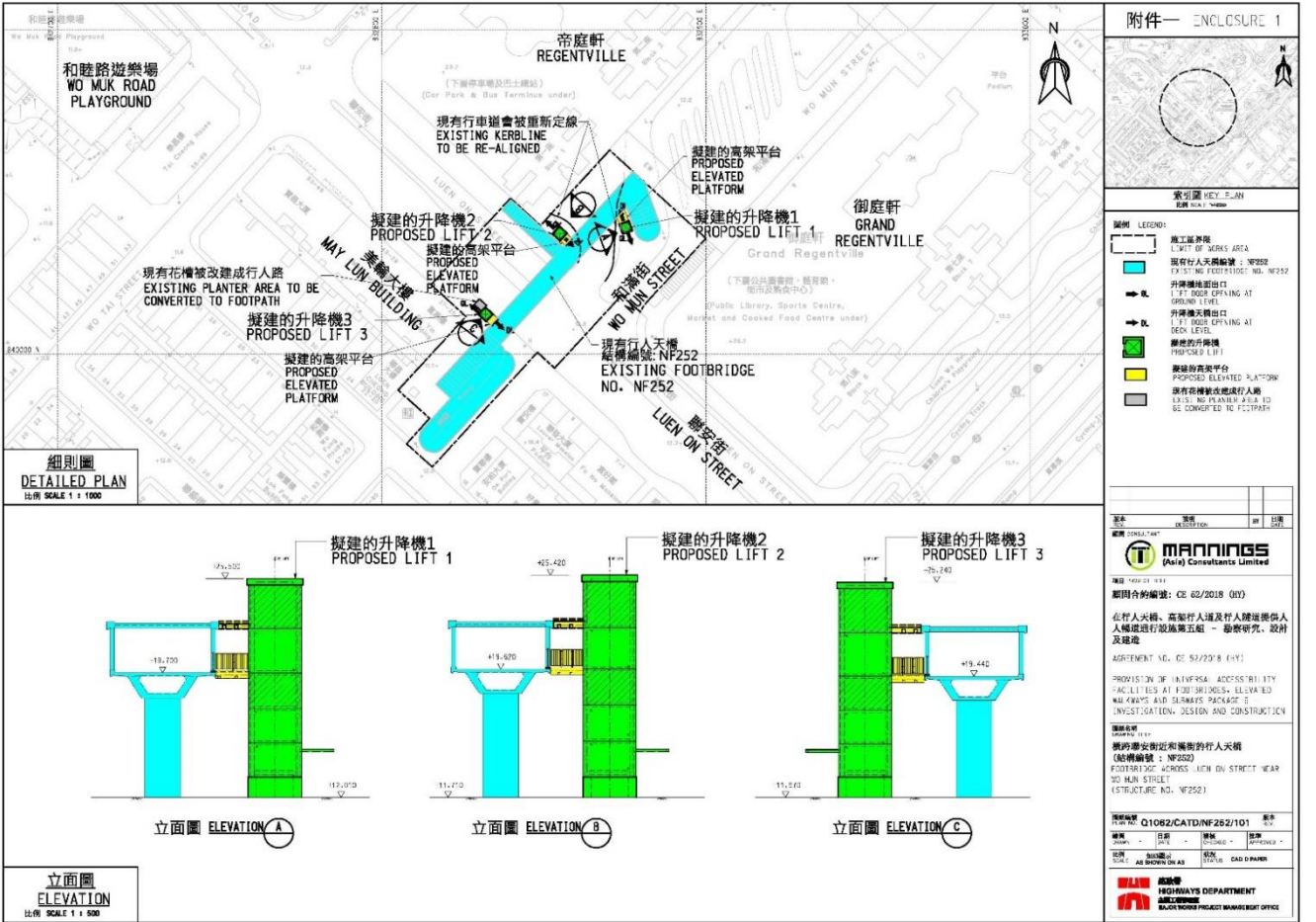
April 2025

Item No. & Cat.	Project Title	Estimated Cost (\$M)	Policy Sec. & Agency	Commencement Date (M/Y)	Completion Date (M/Y)	Description/ Remark	Progress/ Existing Condition
6101TX Cat D	Provision of Universal Accessibility Facilities at Subways Nos. NS112 & NS113	48.6	TLB HyD	4/2021	Q3 2025 (Tentative)	The project includes retrofitting of 3 lifts at the subways across Pak Wo Road and Po Kin Road near Tai Ping Estate and the associated works.	<p><u>Lift No. 1 and Lift No. 3</u> Foundation works are in progress.</p> <p><u>Lift No. 2</u> Lift tower construction are in progress.</p>



Infrastructure Works in North District

April 2025

Item No. & Cat.	Project Title	Estimated Cost (\$M)	Policy Sec. & Agency	Commencement Date (M/Y)	Completion Date (M/Y)	Description/ Remark	Progress/ Existing Condition
6101TX Cat D	Provision of Universal Accessibility Facilities at Footbridge No. NF252	48.2	TLB HyD	4/2021	12/2024	The project includes retrofitting of 3 lifts at the footbridge across Luen On Street near Wo Mun Street and the associated works.	<p><u>Lift No. 1</u> Lift was opened for public use in December 2023.</p> <p><u>Lift No. 2</u> Lift was opened for public use in March 2024.</p> <p><u>Lift No. 3</u> Lift was opened for public use in December 2024.</p>
							

Infrastructure Works in North District

April 2025

Item No. & Cat.	Project Title	Estimated Cost (\$M)	Policy Sec. & Agency	Commence-ment Date (M/Y)	Completion Date (M/Y)	Description/ Remark	Progress/ Existing Condition
6101TX Cat D	Provision of Universal Accessibility Facilities at Elevated Walkway No. N499	22.9	TLB HyD	4/2021	Q3 2025 (Tentative)	The project includes retrofitting of 2 lifts at the elevated walkway at Pak Wo Road Flyover across Fanling Highway and the associated works.	<u>Lift No. 1 and Lift No. 2</u> Slope and retaining wall works are in progress.

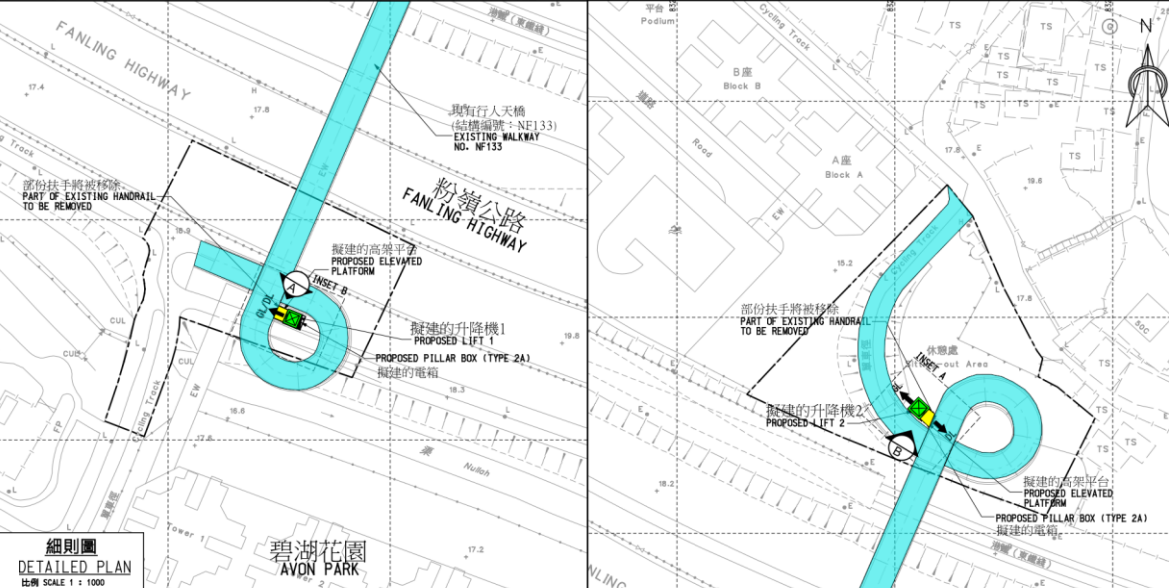
Infrastructure Works in North District

April 2025

Item No. & Cat.	Project Title	Estimated Cost (\$M)	Policy Sec. & Agency	Commencement Date (M/Y)	Completion Date (M/Y)	Description/ Remark	Progress/ Existing Condition
6101TX Cat D	Provision of Universal Accessibility Facilities at Footbridge No. NF121	19.6	TLB HyD	5/2022	Q4 2025 (Tentative)	The project includes retrofitting of 2 lifts at the footbridge across San Wan Road near Sheung Shui MTR Station Exit A4 and the associated works.	<u>Lift No. 1 and Lift No.2</u> The foundation works of the lift towers were completed. The installation of lift towers are being arranged and the related drainage works are in progress.
<div> <div> <p>附件一 ENCLOSURE 1</p> <p>圖例 LEGEND:</p> <ul style="list-style-type: none"> 施工界限 LIMIT OF WORKS AREA 現有行人天橋編號: NF121 EXISTING FOOTBRIDGE NO. NF121 升降機地面出口 LIFT GROUND OPENING AT GROUND LEVEL 升降機天橋出口 LIFT DECK OPENING AT DECK LEVEL 擬建的升降機 PROPOSED LIFT 擬建的高架平台 PROPOSED ELEVATED PLATFORM 部份現有單車徑被改建成行人路 PART OF EXISTING CYCLE TRACK TO BE CONVERTED TO FOOTPATH <p>細則圖 DETAILED PLAN 比例 SCALE 1 : 1000</p> </div> <div> <p>擬建的升降機1 PROPOSED LIFT 1</p> <p>擬建的升降機2 PROPOSED LIFT 2</p> <p>立面圖 ELEVATION A</p> <p>立面圖 ELEVATION B</p> <p>立面圖 ELEVATION 比例 SCALE 1 : 500</p> </div> </div>							

Infrastructure Works in North District

April 2025

Item No. & Cat.	Project Title	Estimated Cost (\$M)	Policy Sec. & Agency	Commencement Date (M/Y)	Completion Date (M/Y)	Description/ Remark	Progress/ Existing Condition
6101TX Cat D	Provision of Universal Accessibility Facilities at Footbridge No. NF133	19.6	TLB HyD	5/2022	12/2024	The project includes retrofitting of 2 lifts at the footbridge across Fanling Highway near Pak Fuk Tin Sum Playground and the associated works.	<u>Lift No. 1 and Lift No. 2</u> Lifts were opened for public use in December 2024.
<div>  <div> <p>附件一 ENCLOSURE 1</p> <p>圖例 LEGEND:</p> <ul style="list-style-type: none"> 施工區界限 LIMIT OF WORKS AREA 現有行人天橋編號: NF133 EXISTING FOOTBRIDGE NO. NF133 升降機地面出口 LIFT DOOR OPENING AT GROUND LEVEL 升降機天橋出口 LIFT DOOR OPENING AT DECK LEVEL 擬建的升降機 PROPOSED LIFT 擬建的高架平台 PROPOSED ELEVATED PLATFORM 部份現有單車徑被改造成行人路 PART OF EXISTING CYCLE TRACK TO BE CONVERTED TO FOOTPATH <p>圖則圖 DETAILED PLAN 比例 SCALE 1:1000</p> <p>碧湖花園 AVON PARK</p> <p>粉嶺公路 FANLING HIGHWAY</p> <p>擬建的升降機1 PROPOSED LIFT 1</p> <p>擬建的升降機2 PROPOSED LIFT 2</p> <p>擬建的高架平台 PROPOSED ELEVATED PLATFORM</p> <p>擬建的電箱 PROPOSED PILLAR BOX (TYPE 2A)</p> <p>部份扶手將被移除 PART OF EXISTING HANDRAIL TO BE REMOVED</p> <p>休憩處 Rest Area</p> <p>塔樓 (東面線) Tower 1</p> <p>Podium</p> <p>Crabbing Track</p> <p>道路 Road</p> <p>Block A</p> <p>Block B</p> <p>Block C</p> <p>Block D</p> <p>Block E</p> <p>Block F</p> <p>Block G</p> <p>Block H</p> <p>Block I</p> <p>Block J</p> <p>Block K</p> <p>Block L</p> <p>Block M</p> <p>Block N</p> <p>Block O</p> <p>Block P</p> <p>Block Q</p> <p>Block R</p> <p>Block S</p> <p>Block T</p> <p>Block U</p> <p>Block V</p> <p>Block W</p> <p>Block X</p> <p>Block Y</p> <p>Block Z</p> <p>Block AA</p> <p>Block AB</p> <p>Block AC</p> <p>Block AD</p> <p>Block AE</p> <p>Block AF</p> <p>Block AG</p> <p>Block AH</p> <p>Block AI</p> <p>Block AJ</p> <p>Block AK</p> <p>Block AL</p> <p>Block AM</p> <p>Block AN</p> <p>Block AO</p> <p>Block AP</p> <p>Block AQ</p> <p>Block AR</p> <p>Block AS</p> <p>Block AT</p> <p>Block AU</p> <p>Block AV</p> <p>Block AW</p> <p>Block AX</p> <p>Block AY</p> <p>Block AZ</p> <p>Block BA</p> <p>Block BB</p> <p>Block BC</p> <p>Block BD</p> <p>Block BE</p> <p>Block BF</p> <p>Block BG</p> <p>Block BH</p> <p>Block BI</p> <p>Block BJ</p> <p>Block BK</p> <p>Block BL</p> <p>Block BM</p> <p>Block BN</p> <p>Block BO</p> <p>Block BP</p> <p>Block BQ</p> <p>Block BR</p> <p>Block BS</p> <p>Block BT</p> <p>Block BU</p> <p>Block BV</p> <p>Block BW</p> <p>Block BX</p> <p>Block BY</p> <p>Block BZ</p> <p>Block CA</p> <p>Block CB</p> <p>Block CC</p> <p>Block CD</p> <p>Block CE</p> <p>Block CF</p> <p>Block CG</p> <p>Block CH</p> <p>Block CI</p> <p>Block CJ</p> <p>Block CK</p> <p>Block CL</p> <p>Block CM</p> <p>Block CN</p> <p>Block CO</p> <p>Block CP</p> <p>Block CQ</p> <p>Block CR</p> <p>Block CS</p> <p>Block CT</p> <p>Block CU</p> <p>Block CV</p> <p>Block CW</p> <p>Block CX</p> <p>Block CY</p> <p>Block CZ</p> <p>Block DA</p> <p>Block DB</p> <p>Block DC</p> <p>Block DD</p> <p>Block DE</p> <p>Block DF</p> <p>Block DG</p> <p>Block DH</p> <p>Block DI</p> <p>Block DJ</p> <p>Block DK</p> <p>Block DL</p> <p>Block DM</p> <p>Block DN</p> <p>Block DO</p> <p>Block DP</p> <p>Block DQ</p> <p>Block DR</p> <p>Block DS</p> <p>Block DT</p> <p>Block DU</p> <p>Block DV</p> <p>Block DW</p> <p>Block DX</p> <p>Block DY</p> <p>Block DZ</p> <p>Block EA</p> <p>Block EB</p> <p>Block EC</p> <p>Block ED</p> <p>Block EE</p> <p>Block EF</p> <p>Block EG</p> <p>Block EH</p> <p>Block EI</p> <p>Block EJ</p> <p>Block EK</p> <p>Block EL</p> <p>Block EM</p> <p>Block EN</p> <p>Block EO</p> <p>Block EP</p> <p>Block EQ</p> <p>Block ER</p> <p>Block ES</p> <p>Block ET</p> <p>Block EU</p> <p>Block EV</p> <p>Block EW</p> <p>Block EX</p> <p>Block EY</p> <p>Block EZ</p> <p>Block FA</p> <p>Block FB</p> <p>Block FC</p> <p>Block FD</p> <p>Block FE</p> <p>Block FF</p> <p>Block FG</p> <p>Block FH</p> <p>Block FI</p> <p>Block FJ</p> <p>Block FK</p> <p>Block FL</p> <p>Block FM</p> <p>Block FN</p> <p>Block FO</p> <p>Block FP</p> <p>Block FQ</p> <p>Block FR</p> <p>Block FS</p> <p>Block FT</p> <p>Block FU</p> <p>Block FV</p> <p>Block FW</p> <p>Block FX</p> <p>Block FY</p> <p>Block FZ</p> <p>Block GA</p> <p>Block GB</p> <p>Block GC</p> <p>Block GD</p> <p>Block GE</p> <p>Block GF</p> <p>Block GH</p> <p>Block GI</p> <p>Block GJ</p> <p>Block GK</p> <p>Block GL</p> <p>Block GM</p> <p>Block GN</p> <p>Block GO</p> <p>Block GP</p> <p>Block GQ</p> <p>Block GR</p> <p>Block GS</p> <p>Block GT</p> <p>Block GU</p> <p>Block GV</p> <p>Block GW</p> <p>Block GX</p> <p>Block GY</p> <p>Block GZ</p> <p>Block HA</p> <p>Block HB</p> <p>Block HC</p> <p>Block HD</p> <p>Block HE</p> <p>Block HF</p> <p>Block HG</p> <p>Block HH</p> <p>Block HI</p> <p>Block HJ</p> <p>Block HK</p> <p>Block HL</p> <p>Block HM</p> <p>Block HN</p> <p>Block HO</p> <p>Block HP</p> <p>Block HQ</p> <p>Block HR</p> <p>Block HS</p> <p>Block HT</p> <p>Block HU</p> <p>Block HV</p> <p>Block HW</p> <p>Block HX</p> <p>Block HY</p> <p>Block HZ</p> <p>Block IA</p> <p>Block IB</p> <p>Block IC</p> <p>Block ID</p> <p>Block IE</p> <p>Block IF</p> <p>Block IG</p> <p>Block IH</p> <p>Block II</p> <p>Block IJ</p> <p>Block IK</p> <p>Block IL</p> <p>Block IM</p> <p>Block IN</p> <p>Block IO</p> <p>Block IP</p> <p>Block IQ</p> <p>Block IR</p> <p>Block IS</p> <p>Block IT</p> <p>Block IU</p> <p>Block IV</p> <p>Block IW</p> <p>Block IX</p> <p>Block IY</p> <p>Block IZ</p> <p>Block JA</p> <p>Block JB</p> <p>Block JC</p> <p>Block JD</p> <p>Block JE</p> <p>Block JF</p> <p>Block JG</p> <p>Block JH</p> <p>Block JI</p> <p>Block JJ</p> <p>Block JK</p> <p>Block JL</p> <p>Block JM</p> <p>Block JN</p> <p>Block JO</p> <p>Block JP</p> <p>Block JQ</p> <p>Block JR</p> <p>Block JS</p> <p>Block JT</p> <p>Block JU</p> <p>Block JV</p> <p>Block JW</p> <p>Block JX</p> <p>Block JY</p> <p>Block JZ</p> <p>Block KA</p> <p>Block KB</p> <p>Block KC</p> <p>Block KD</p> <p>Block KE</p> <p>Block KF</p> <p>Block KG</p> <p>Block KH</p> <p>Block KI</p> <p>Block KJ</p> <p>Block KK</p> <p>Block KL</p> <p>Block KM</p> <p>Block KN</p> <p>Block KO</p> <p>Block KP</p> <p>Block KQ</p> <p>Block KR</p> <p>Block KS</p> <p>Block KT</p> <p>Block KU</p> <p>Block KV</p> <p>Block KW</p> <p>Block KX</p> <p>Block KY</p> <p>Block KZ</p> <p>Block LA</p> <p>Block LB</p> <p>Block LC</p> <p>Block LD</p> <p>Block LE</p> <p>Block LF</p> <p>Block LG</p> <p>Block LH</p> <p>Block LI</p> <p>Block LJ</p> <p>Block LK</p> <p>Block LL</p> <p>Block LM</p> <p>Block LN</p> <p>Block LO</p> <p>Block LP</p> <p>Block LQ</p> <p>Block LR</p> <p>Block LS</p> <p>Block LT</p> <p>Block LU</p> <p>Block LV</p> <p>Block LW</p> <p>Block LX</p> <p>Block LY</p> <p>Block LZ</p> <p>Block MA</p> <p>Block MB</p> <p>Block MC</p> <p>Block MD</p> <p>Block ME</p> <p>Block MF</p> <p>Block MG</p> <p>Block MH</p> <p>Block MI</p> <p>Block MJ</p> <p>Block MK</p> <p>Block ML</p> <p>Block MM</p> <p>Block MN</p> <p>Block MO</p> <p>Block MP</p> <p>Block MQ</p> <p>Block MR</p> <p>Block MS</p> <p>Block MT</p> <p>Block MU</p> <p>Block MV</p> <p>Block MW</p> <p>Block MX</p> <p>Block MY</p> <p>Block MZ</p> <p>Block NA</p> <p>Block NB</p> <p>Block NC</p> <p>Block ND</p> <p>Block NE</p> <p>Block NF</p> <p>Block NG</p> <p>Block NH</p> <p>Block NI</p> <p>Block NJ</p> <p>Block NK</p> <p>Block NL</p> <p>Block NM</p> <p>Block NN</p> <p>Block NO</p> <p>Block NP</p> <p>Block NQ</p> <p>Block NR</p> <p>Block NS</p> <p>Block NT</p> <p>Block NU</p> <p>Block NV</p> <p>Block NW</p> <p>Block NX</p> <p>Block NY</p> <p>Block NZ</p> <p>Block OA</p> <p>Block OB</p> <p>Block OC</p> <p>Block OD</p> <p>Block OE</p> <p>Block OF</p> <p>Block OG</p> <p>Block OH</p> <p>Block OI</p> <p>Block OJ</p> <p>Block OK</p> <p>Block OL</p> <p>Block OM</p> <p>Block ON</p> <p>Block OO</p> <p>Block OP</p> <p>Block OQ</p> <p>Block OR</p> <p>Block OS</p> <p>Block OT</p> <p>Block OU</p> <p>Block OV</p> <p>Block OW</p> <p>Block OX</p> <p>Block OY</p> <p>Block OZ</p> <p>Block PA</p> <p>Block PB</p> <p>Block PC</p> <p>Block PD</p> <p>Block PE</p> <p>Block PF</p> <p>Block PG</p> <p>Block PH</p> <p>Block PI</p> <p>Block PJ</p> <p>Block PK</p> <p>Block PL</p> <p>Block PM</p> <p>Block PN</p> <p>Block PO</p> <p>Block PP</p> <p>Block PQ</p> <p>Block PR</p> <p>Block PS</p> <p>Block PT</p> <p>Block PU</p> <p>Block PV</p> <p>Block PW</p> <p>Block PX</p> <p>Block PY</p> <p>Block PZ</p> <p>Block QA</p> <p>Block QB</p> <p>Block QC</p> <p>Block QD</p> <p>Block QE</p> <p>Block QF</p> <p>Block QG</p> <p>Block QH</p> <p>Block QI</p> <p>Block QJ</p> <p>Block QK</p> <p>Block QL</p> <p>Block QM</p> <p>Block QN</p> <p>Block QO</p> <p>Block QP</p> <p>Block QQ</p> <p>Block QR</p> <p>Block QS</p> <p>Block QT</p> <p>Block QU</p> <p>Block QV</p> <p>Block QW</p> <p>Block QX</p> <p>Block QY</p> <p>Block QZ</p> <p>Block RA</p> <p>Block RB</p> <p>Block RC</p> <p>Block RD</p> <p>Block RE</p> <p>Block RF</p> <p>Block RG</p> <p>Block RH</p> <p>Block RI</p> <p>Block RJ</p> <p>Block RK</p> <p>Block RL</p> <p>Block RM</p> <p>Block RN</p> <p>Block RO</p> <p>Block RP</p> <p>Block RQ</p> <p>Block RR</p> <p>Block RS</p> <p>Block RT</p> <p>Block RU</p> <p>Block RV</p> <p>Block RW</p> <p>Block RX</p> <p>Block RY</p> <p>Block RZ</p> <p>Block SA</p> <p>Block SB</p> <p>Block SC</p> <p>Block SD</p> <p>Block SE</p> <p>Block SF</p> <p>Block SG</p> <p>Block SH</p> <p>Block SI</p> <p>Block SJ</p> <p>Block SK</p> <p>Block SL</p> <p>Block SM</p> <p>Block SN</p> <p>Block SO</p> <p>Block SP</p> <p>Block SQ</p> <p>Block SR</p> <p>Block SS</p> <p>Block ST</p> <p>Block SU</p> <p>Block SV</p> <p>Block SW</p> <p>Block SX</p> <p>Block SY</p> <p>Block SZ</p> <p>Block TA</p> <p>Block TB</p> <p>Block TC</p> <p>Block TD</p> <p>Block TE</p> <p>Block TF</p> <p>Block TG</p> <p>Block TH</p> <p>Block TI</p> <p>Block TJ</p> <p>Block TK</p> <p>Block TL</p> <p>Block TM</p> <p>Block TN</p> <p>Block TO</p> <p>Block TP</p> <p>Block TQ</p> <p>Block TR</p> <p>Block TS</p> <p>Block TT</p> <p>Block TU</p> <p>Block TV</p> <p>Block TW</p> <p>Block TX</p> <p>Block TY</p> <p>Block TZ</p> <p>Block UA</p> <p>Block UB</p> <p>Block UC</p> <p>Block UD</p> <p>Block UE</p> <p>Block UF</p> <p>Block UG</p> <p>Block UH</p> <p>Block UI</p> <p>Block UJ</p> <p>Block UK</p> <p>Block UL</p> <p>Block UM</p> <p>Block UN</p> <p>Block UO</p> <p>Block UP</p> <p>Block UQ</p> <p>Block UR</p> <p>Block US</p> <p>Block UT</p> <p>Block UU</p> <p>Block UV</p> <p>Block UW</p> <p>Block UX</p> <p>Block UY</p> <p>Block UZ</p> <p>Block VA</p> <p>Block VB</p> <p>Block VC</p> <p>Block VD</p> <p>Block VE</p> <p>Block VF</p> <p>Block VG</p> <p>Block VH</p> <p>Block VI</p> <p>Block VJ</p> <p>Block VK</p> <p>Block VL</p> <p>Block VM</p> <p>Block VN</p> <p>Block VO</p> <p>Block VP</p> <p>Block VQ</p> <p>Block VR</p> <p>Block VS</p> <p>Block VT</p> <p>Block VU</p> <p>Block VV</p> <p>Block VW</p> <p>Block VX</p> <p>Block VY</p> <p>Block VZ</p> <p>Block WA</p> <p>Block WB</p> <p>Block WC</p> <p>Block WD</p> <p>Block WE</p> <p>Block WF</p> <p>Block WG</p> <p>Block WH</p> <p>Block WI</p> <p>Block WJ</p> <p>Block WK</p> <p>Block WL</p> <p>Block WM</p> <p>Block WN</p> <p>Block WO</p> <p>Block WP</p> <p>Block WQ</p> <p>Block WR</p> <p>Block WS</p> <p>Block WT</p> <p>Block WU</p> <p>Block WV</p> <p>Block WW</p> <p>Block WX</p> <p>Block WY</p> <p>Block WZ</p> <p>Block XA</p> <p>Block XB</p> <p>Block XC</p> <p>Block XD</p> <p>Block XE</p> <p>Block XF</p> <p>Block XG</p> <p>Block XH</p> <p>Block XI</p> <p>Block XJ</p> <p>Block XK</p> <p>Block XL</p> <p>Block XM</p> <p>Block XN</p> <p>Block XO</p> <p>Block XP</p> <p>Block XQ</p> <p>Block XR</p> <p>Block XS</p> <p>Block XT</p> <p>Block XU</p> <p>Block XV</p> <p>Block XW</p> <p>Block XX</p> <p>Block XY</p> <p>Block XZ</p> <p>Block YA</p> <p>Block YB</p> <p>Block YC</p> <p>Block YD</p> <p>Block YE</p> <p>Block YF</p> <p>Block YG</p> <p>Block YH</p> <p>Block YI</p> <p>Block YJ</p> <p>Block YK</p> <p>Block YL</p> <p>Block YM</p> <p>Block YN</p> <p>Block YO</p> <p>Block YP</p> <p>Block YQ</p> <p>Block YR</p> <p>Block YS</p> <p>Block YT</p> <p>Block YU</p> <p>Block YV</p> <p>Block YW</p> <p>Block YX</p> <p>Block YY</p> <p>Block YZ</p> <p>Block ZA</p> <p>Block ZB</p> <p>Block ZC</p> <p>Block ZD</p> <p>Block ZE</p> <p>Block ZF</p> <p>Block ZG</p> <p>Block ZH</p> <p>Block ZI</p> <p>Block ZJ</p> <p>Block ZK</p> <p>Block ZL</p> <p>Block ZM</p> <p>Block ZN</p> <p>Block ZO</p> <p>Block ZP</p> <p>Block ZQ</p> <p>Block ZR</p> <p>Block ZS</p> <p>Block ZT</p> <p>Block ZU</p> <p>Block ZV</p> <p>Block ZW</p> <p>Block ZX</p> <p>Block ZY</p> <p>Block ZZ</p> </div> </div>							

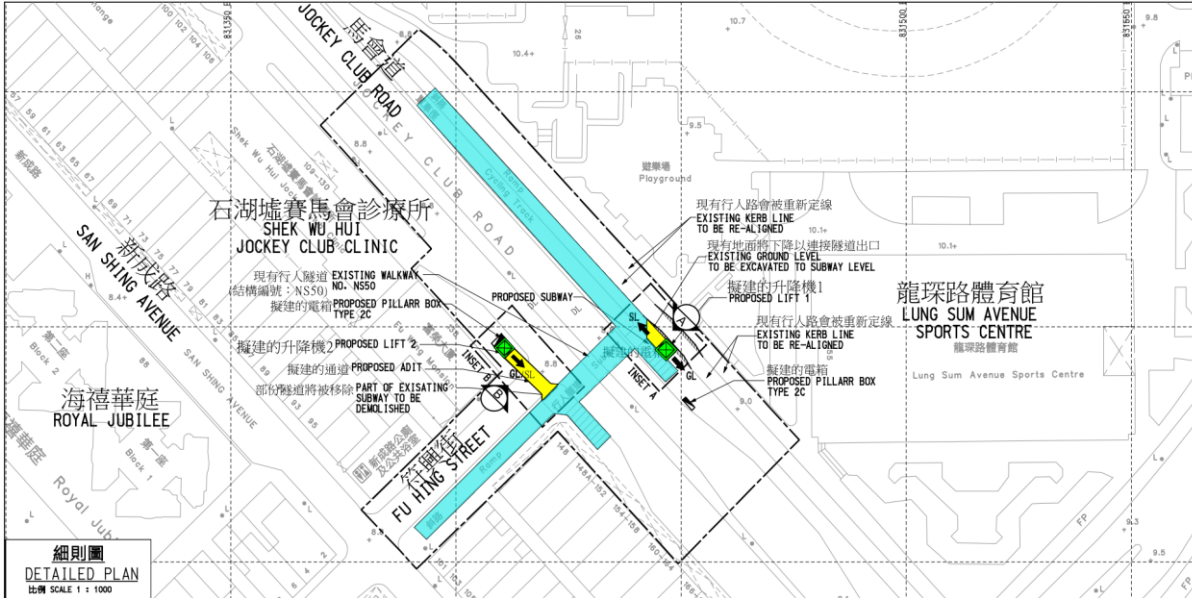

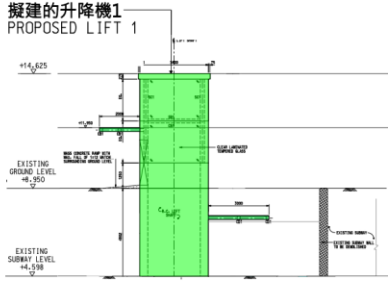
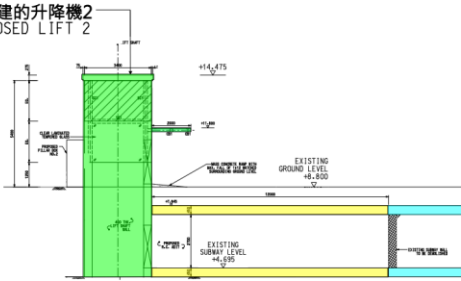
Infrastructure Works in North District

April 2025

Item No. & Cat.	Project Title	Estimated Cost (\$M)	Policy Sec. & Agency	Commencement Date (M/Y)	Completion Date (M/Y)	Description/ Remark	Progress/ Existing Condition
6101TX Cat D	Provision of Universal Accessibility Facilities at Footbridge No. NF304	19.6	TLB HyD	5/2022	Q2 2026 (Tentative)	The project includes retrofitting of 2 lifts at the footbridge across Yat Ming Road near King Shing Court Commercial Complex and the associated works.	<p><u>Lift No. 1</u> The foundation works of the lift tower were completed. The installation of lift tower is being arranged and the related drainage works are in progress.</p> <p><u>Lift No. 2</u> The diversion of underground utilities is in progress.</p>
<div> </div>							

Infrastructure Works in North District

April 2025

Item No. & Cat.	Project Title	Estimated Cost (\$M)	Policy Sec. & Agency	Commencement Date (M/Y)	Completion Date (M/Y)	Description/ Remark	Progress/ Existing Condition
6101TX Cat D	Provision of Universal Accessibility Facilities at Subway No. NS50	19.6	TLB HyD	5/2022	Q1 2027 (Tentative)	The project includes retrofitting of 2 lifts at the subway across Jockey Club Road near Fu Hing Street and the associated works.	<p><u>Lift No. 1</u> The foundation works of lift tower are being arranged.</p> <p><u>Lift No. 2</u> The foundation works of lift tower are in progress.</p>
<div>  <div> <p>附件一 ENCLOSURE 1</p>  <p>索引圖 KEY PLAN 比例 SCALE 1:4000</p> <p>圖例 LEGEND:</p> <ul style="list-style-type: none"> 施工區界限 LIMIT OF WORKS AREA 現有行人天橋編號: NS50 EXISTING FOOTBRIDGE NO. NS50 升降機出入口 LIFT DOOR OPENING AT GROUND LEVEL 升降機出入口 LIFT DOOR OPENING AT SUBWAY LEVEL 擬建的升降機 PROPOSED LIFT 擬建的通道 PROPOSED ADIT 部分現有單車徑改造成行人路 PART OF EXISTING CYCLE TRACK TO BE CONVERTED TO FOOTPATH <p>細則圖 DETAILED PLAN 比例 SCALE 1:1000</p> </div> <div> <p>擬建的升降機1 PROPOSED LIFT 1</p>  <p>立面圖 ELEVATION A</p> <p>擬建的升降機2 PROPOSED LIFT 2</p>  <p>立面圖 ELEVATION B</p> <p>立面圖 ELEVATION 比例 SCALE 1:500</p> </div> <div> <p>MANNING'S (Asia) Consultants Limited</p> <p>顧問合約編號: CE 62/2018 (HY)</p> <p>在行人天橋、高架行人道及行人隧道提供人 人暢道通行設施第五組 - 勘察研究、設計 及建造</p> <p>AGREEMENT NO. CE 52/2018 (HY)</p> <p>PROVISION OF UNIVERSAL ACCESSIBILITY FACILITIES AT FOOTBRIDGES, ELEVATED WALKWAYS AND SUBWAYS PACKAGE 5 - INVESTIGATION, DESIGN AND CONSTRUCTION</p> <p>圖則名稱 BOARDED TITLE</p> <p>橫街市會道近竹園街的行人隧道 NS50 SUBWAY ACROSS JOCKEY CLUB ROAD NEAR FU HING STREET (STRUCTURE NO. NS50)</p> <p>圖則編號 G1062/CATD/NS50/101</p> <p>繪圖 DATE 校核 DATE 批准 DATE</p> <p>比例 SCALE AS SHOWN ON AS</p> <p>紙張 SHEET CAD D PAPER</p> <p>路政署 HIGHWAYS DEPARTMENT 工程處 MAJOR WORKS PROJECT MANAGEMENT OFFICE</p> </div> </div>							

Infrastructure Works in North District

April 2025

Item No. & Cat.	Project Title	Estimated Cost (\$M)	Policy Sec. & Agency	Commence-ment Date (M/Y)	Completion Date (M/Y)	Description/ Remark	Progress/ Existing Condition
6101TX Cat D	Provision of Universal Accessibility Facilities at Subway No. NS120	29.3	TLB HyD	5/2022	Q1 2027 (Tentative)	The project includes retrofitting of 3 lifts at the subway across Jockey Club Road and Po Shek Wu Road near Hing Yan Tsuen and the associated works.	<p><u>Lift No. 1</u> The foundation works of lift tower are being arranged.</p> <p><u>Lift No. 2 and Lift No. 3</u> The foundation works of the lift towers are in progress.</p>

Infrastructure Works in North District

April 2025

Item No. & Cat.	Project Title	Estimated Cost (\$M)	Policy Sec. & Agency	Commence-ment Date (M/Y)	Completion Date (M/Y)	Description/ Remark	Progress/ Existing Condition
6101TX Cat D	Provision of Universal Accessibility Facilities at Footbridge No. CY06	18.6	TLB HyD	1/2023	Q1 2027 (Tentative)	The project includes retrofitting of 1 lift at the footbridge across existing road connecting Choi Chu House and Choi Wah House of Choi Yuen Estate and the associated works.	Liaison between the utility undertakers and the contractor is on going to make way for utilities diversion.

Infrastructure Works in North District

April 2025

Item No. & Cat.	Project Title	Estimated Cost (\$M)	Policy Sec. & Agency	Commencement Date (M/Y)	Completion Date (M/Y)	Description/ Remark	Progress/ Existing Condition
6101TX Cat D	Provision of Universal Accessibility Facilities at Footbridge No. NF228	33.81	TLB HyD	8/2024	Q3 2028 (Tentative)	The project includes retrofitting of 2 lifts at the footbridge across San Wan Road near Fanling Station Road and the associated works.	<u>Lift No. 1 and Lift No. 2</u> Advanced preparation works such as application of excavation permit and temporary traffic arrangement and coordination with utilities undertakers for utilities diversion were being carried out by the Contractor.

Infrastructure Works in North District

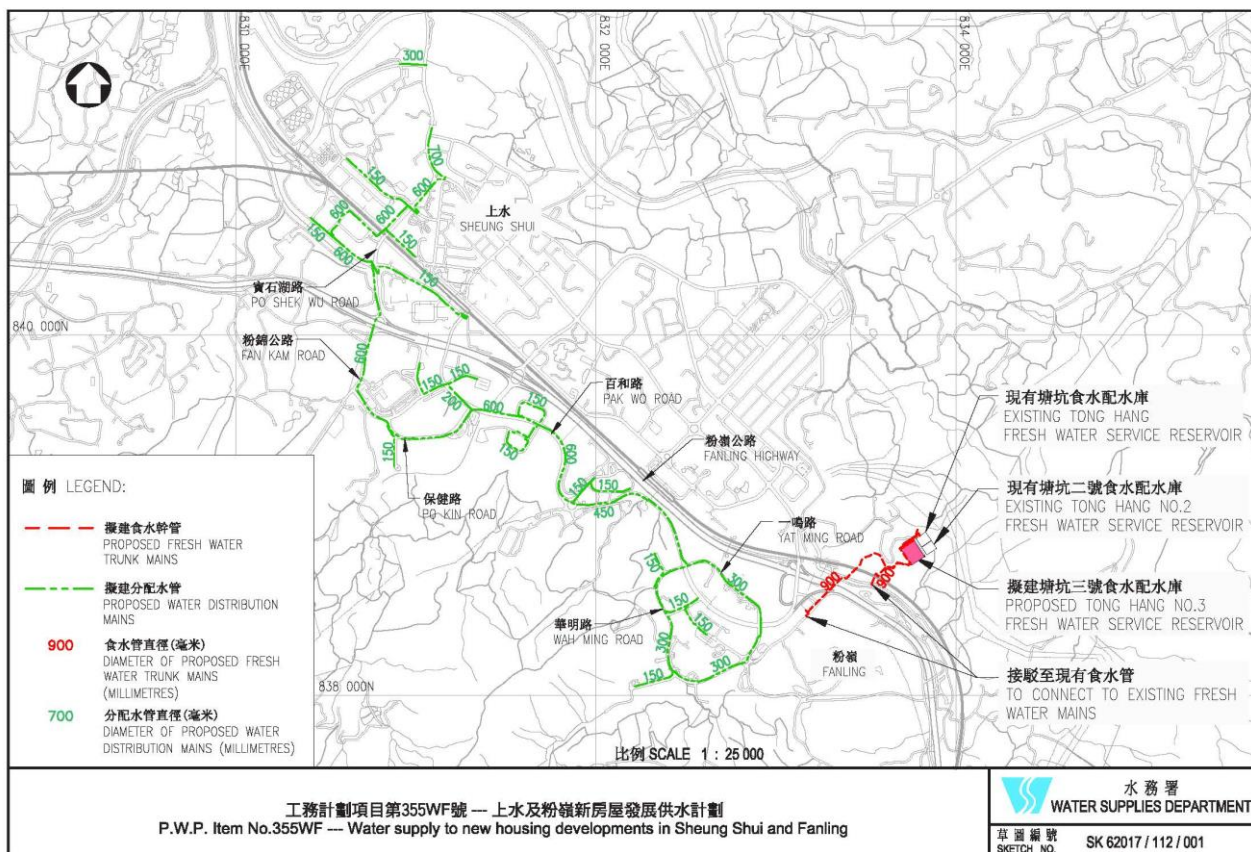
April 2025

Item No. & Cat.	Project Title	Estimated Cost (\$M)	Policy Sec. & Agency	Commence- ment Date (M/Y)	Completion Date (M/Y)	Description/ Remark	Progress/ Existing Condition
-	Footbridge Linking Fanling MTR Station and Luen Wo Hui	About 1,500	SHYA HyD	Under Reivew	Under Reivew	The project is to construct a footbridge of about 1km long linking Fanling MTR Station and Luen Wo Hui so as to increase the general connectivity of the area.	In the Hong Kong Major Transport Infrastructure Development Blueprint promulgated by the Government, the Northeast New Territories Line (NENTL) is proposed to be constructed to underpin the development of the New Territories North New Town. In view that the alignment for some part of the NENTL under planning is proximate to the alignment of the project, implementation of the latter would need to be reviewed by departments.

Infrastructure Works in North District

April 2025

Item No. & Cat.	Project Title	Estimated Cost (\$M)	Policy Sec. & Agency	Commencement Date (M/Y)	Completion Date (M/Y)	Description/ Remark	Progress/ Existing Condition
355WF Cat.A	Water Supply to New Housing Developments in Sheung Shui and Fanling	1,699.7	DEVB WSD	9/2018	Substantial Completion 12/2024	<p>The scope of the proposed works comprises:</p> <p>(a) construction of a fresh water service reservoir at Tong Hang with a capacity of 55 000 cubic metres;</p> <p>(b) laying of about 2 kilometres (km) trunk mains with 900 millimetres (mm) diameter connecting to the new service reservoir to existing water supply system;</p> <p>(c) laying of about 12 km distribution mains with diameters ranging from 150 mm and 700 mm in the south-western part of Sheung Shui and Fanling areas and associated service connections;</p> <p>(d) upgrading of the existing Tai Po fresh water pumping station and laying of associated water mains; and</p> <p>(e) associated works including environmental mitigation works, landscaping works.</p>	The proposed works commenced in September 2018 and substantially completed on 31 December 2024.



Infrastructure Works in North District

April 2025

Item No. & Cat.	Project Title	Estimated Cost (\$M)	Policy Sec. & Agency	Commencement Date (M/Y)	Completion Date (M/Y)	Description/ Remark	Progress/ Existing Condition
055WS Cat.A	Reclaimed Water Supply to Sheung Shui and Fanling	1,255.5	DEVB WSD	7/2021	Phased completion from Q1 2024 to Q4 2026	<p>The scope of the proposed works comprises:</p> <p>(a) construction of Shek Wu Hui water reclamation plant (SWHWRP) with a production capacity of up to 73 000 cubic metres (m³) per day;</p> <p>(b) laying of about 1.2 kilometres (km) of pumping mains with a diameter of 600 millimetres (mm) connecting the proposed SWHWRP and the Table Hill reclaimed water service reservoir;</p> <p>(c) laying of about 24.1 km of distribution mains with diameters ranging from 150 mm to 450 mm in the north-eastern part of Sheung Shui and Fanling (SSF) areas and associated water main connection works; and</p> <p>(d) associated works including environmental mitigation works, landscaping works and other engineering works.</p>	Construction Works commenced on 30 July 2021. Shek Wu Hui Water Reclamation Plant has started its operation since March 2024. The remaining works are targeted to be completed in phases by Q4 2026.

Other Works in North District

April 2025

Item No. & Cat.	Project Title	Estimated Cost (\$M)	Policy Sec. & Agency	Commencement Date (M/Y)	Completion Date (M/Y)	Description/ Remark	Progress/ Existing Condition
-	Public Housing Development (PHD) at Sheung Shui Areas 4 & 30 Site 1 Phase 1 and Phase 2	About 2,600	SH, HD	5/2022 (building works at Phase 1) 11/2024 (foundation works at Phase 2)	Q4 2025 (Phase 1) Q3 2027 (Phase 2 PTI) Q4 2029 (Phase 2 PHD)	<ul style="list-style-type: none"> • Provision of approx. 2,089 flats with associated parking and retail facilities; • Public Transport Interchange; • Joint Use Complex (JUC) (Including Community Hall, Day Activity Centre, Hostel for Severely Mentally Handicapped Persons and District Health Centre); and • Kindergarten, Residential Care Home for the Elderly, Integrated Vocational Rehabilitation Service Centre and Hostel for Moderately Mentally Handicapped Persons. 	<ul style="list-style-type: none"> • Building works at Phase 1 in progress; • Funding acquisition & TFS preparation for Phase 2 PTI in progress; and • FC meeting was held on July 2024 for Phase 2 JUC was approved.

Other Works in North District

April 2025

Item No. & Cat.	Project Title	Estimated Cost (\$M)	Policy Sec. & Agency	Commencement Date (M/Y)	Completion Date (M/Y)	Description/ Remark	Progress/ Existing Condition
-	Public Housing Development at Sheung Shui Areas 4 & 30 Site 2 Phase 1 and Phase 2	About 1,900	SH, HD	2/2022 (building works at Phase 2) 7/2021 (foundation & building works at Phase 1)	Q4 2024 (Phase 1) Q3 2025 (Phase 2)	<ul style="list-style-type: none"> • Provision of approx. 1,431 flats with associated parking and retail facilities; and • Public Vehicle Park (PVP). 	<ul style="list-style-type: none"> • Phase 1 PVP has started operation; and • Building works at Phase 2 PHD are in progress.

Other Works in North District

April 2025

Item No. & Cat.	Project Title	Estimated Cost (\$M)	Policy Sec. & Agency	Commencement Date (M/Y)	Completion Date (M/Y)	Description/ Remark	Progress/ Existing Condition
-	Public Housing Development at Po Shek Wu Road	About 2,870	SH, HD, CEDD, LandsD	2/2025 (foundation works) Q2/2026 (building works)	Q2 2026 (foundation) Q3 2029 (building)	<ul style="list-style-type: none"> • Provision of approx. 1,904 flats with associated parking and retail facilities; • Residential Care Home for the Elderly; • Child Care Centre; • Short-term Food Assistance Service Team main base; • Home Care Services for Frail Elderly Persons; • Kindergarten; and • At grade pedestrian pavement improvement works along San Wan Road connecting to Sheung Shui MTR station. (To be confirmed subject to DC consultation in 4/2025). 	<ul style="list-style-type: none"> • KMB Bus depot relocated by end-Oct 2024 and site handover from KMB to LandsD was delayed for 13 months; and • Land contamination report was completed by end-Jan 2025.

Other Works in North District

April 2025

Item No. & Cat.	Project Title	Estimated Cost (\$M)	Policy Sec. & Agency	Commencement Date (M/Y)	Completion Date (M/Y)	Description/Remark	Progress/ Existing Condition
-	Public Housing Development at Fanling Area 36 Phase 4	About 1,000	SH, HD	9/2019 (Foundation works) 1/2021 (Building works)	2024 (Domestic block and podium) 2025 (Alteration & Addition works)	<ul style="list-style-type: none"> • Provision of approx. 776 flats; and • Domestic block sitting on a four-storey podium with retail and carparking facilities. 	Superstructure works are in progress.

Other Works in North District

April 2025

Item No. & Cat.	Project Title	Estimated Cost (\$M)	Policy Sec. & Agency	Commencement Date (M/Y)	Completion Date (M/Y)	Description/ Remark	Progress/ Existing Condition
-	Public Housing Development at Fanling North Area 15 East Phase 1	About 2,923	SH, HD	6/2022 (Foundation works) 8/2023 (Building works)	Year 2026 in stages	<ul style="list-style-type: none"> • Provision of approx. 3,120 rental flats and associated facilities; • Domestic blocks sitting on a five-storey podium with 585 private car and 24 motorcycle parking spaces, retail facilities, welfare facilities (Including a Day Care Centre for the Elderly and a District Support Centre for Persons with Disabilities funded by Social Welfare Department) and Estate Management Office (EMO); and • 2 kindergartens. 	Superstructure works are in progress.

Other Works in North District

April 2025

Item No. & Cat.	Project Title	Estimated Cost (\$M)	Policy Sec. & Agency	Commencement Date (M/Y)	Completion Date (M/Y)	Description/ Remark	Progress/ Existing Condition
-	Public Housing Development at Fanling North Area 15 East Phase 2	About 2,542	SH, HD	12/2022 (Foundation works) 7/2024 (Building works)	2027	<ul style="list-style-type: none"> • Provision of approx. 3, 048 rental flats and associated facilities; • Domestic block sitting on a three-storey podium with 76 private car and 20 motorcycle parking spaces; • Domestic blocks sitting on a two-storey podium with retail facilities, District Tenancy Management Office and a Public Transport Interchange (Government-funded); • A seven-storey standalone Welfare Facilities Block (Including two Residential Care Home for the Elderly, a Child Care Centre, a Neighbourhood Elderly Centre and a Home Care Services for Frail Elderly Persons), funded by Social Welfare Department; and • A footbridge over new road. 	Superstructure works are in progress.

Other Works in North District

April 2025

Item No. & Cat.	Project Title	Estimated Cost (\$M)	Policy Sec. & Agency	Commencement Date (M/Y)	Completion Date (M/Y)	Description/ Remark	Progress/ Existing Condition
-	Public Housing Development at Kwu Tung North Area 19 Phase 1A	About 3,169	SH, HD	6/2022 (Foundation works) 6/2023 (Building works)	2026	<ul style="list-style-type: none"> • Provision of approx. 4,328 flats rental flats with associated parking and retail facilities; • Welfare and Carpark and Block (Including A Long Stay Care Home); • A kindergarten; and • A Child Care Centre, A Home Care Services for Frail Elderly Persons, A Supported Hostel for Ex-Mentally Ill Persons, An Integrated Family Service Centre and an Integrated Children and Youth Services Centre. 	Superstructure works are in progress.

Other Works in North District

April 2025

Item No. & Cat.	Project Title	Estimated Cost (\$M)	Policy Sec. & Agency	Commencement Date (M/Y)	Completion Date (M/Y)	Description/ Remark	Progress/ Existing Condition
-	Public Housing Development at Kwu Tung North Area 19 Phase 1B	About 524	SH, HD	6/2023 (Combined Foundation and Building Works)	2026	<ul style="list-style-type: none"> • Provision of approx. 640 flats rental flats; and • A kindergarten. 	Superstructure works are in progress.

Other Works in North District

April 2025

Item No. & Cat.	Project Title	Estimated Cost (\$M)	Policy Sec. & Agency	Commencement Date (M/Y)	Completion Date (M/Y)	Description/ Remark	Progress/ Existing Condition
-	Public Housing Development at Kwu Tung North Area 19 Phase 2	About 4,620	SH, HD	9/2023 (Foundation and Building Works – project adopting Design and Build procurement approach)	10/2027	<ul style="list-style-type: none"> • Provision of approx. 4,336 flats rental flats with associated parking and retail facilities; • Two kindergartens; • A district elderly community centre, a day care centre for the elderly, a day activity centre, a hostel for severely mentally handicapped persons, a hostel for moderately mentally handicapped persons, a supported hostel for mentally/physically handicapped persons, an integrated vocational rehabilitation services centre and a special child care centre; and • A footbridge from the terraced podium to connect to the neighbouring Public Housing Development at Kwu Tung North Area 19 Phase 1A. 	Superstructure works are in progress.

Other Works in North District

April 2025

Item No. & Cat.	Project Title	Estimated Cost (\$M)	Policy Sec. & Agency	Commencement Date (M/Y)	Completion Date (M/Y)	Description/ Remark	Progress/ Existing Condition
-	Public Housing Development at San Wan Road, Fanling	Under Review	SH, HD	2/2023 (Foundation works) 4/2024 (Building works)	2027	<ul style="list-style-type: none"> • Provision of about 448 flats with associated car parking; • A child care centre; and • A social security field unit 	Superstructure works are in progress.
-	Public Housing Development at Fanling Area 48	About 6,399	SH, HD	Q2 2025 (Foundation and Building Works – project adopting Design and Build procurement approach)	2031	<ul style="list-style-type: none"> • Provision of approx. 4,320 flats with associated parking spaces, HA's office and retail facilities; • Hostel for Moderately Mentally Handicapped Persons; • Integrated Vocational Rehabilitation Services Centre; • Neighbourhood Elderly Centre; • Supported Hostel for Mentally / Physically Handicapped Persons; • Residential Care Home for the Elderly cum Day Care Unit for the Elderly; and • Kindergarten. 	<ul style="list-style-type: none"> • The Design and Build contract was awarded in 12/2024. • Phase 1 site hand over from CEDD to HD was completed on 3 March 2025

Other Works in North District

April 2025

Item No. & Cat.	Project Title	Estimated Cost (\$M)	Policy Sec. & Agency	Commencement Date (M/Y)	Completion Date (M/Y)	Description/ Remark	Progress/ Existing Condition
-	Public Housing Development at Choi Shun Street, Sheung Shui	About 3,450	SH, HD	Q2 2025 (foundation works) Q2/2026 (building works)	Q2 2026 (foundation) Q3 2029 (building)	<ul style="list-style-type: none"> • Provision of approx. 2,474 flats with associated parking and retail facilities; • Residential Care Home for the Elderly; • Office Base of Pre-school Rehabilitation Services. • Small Group Home; • Neighborhood Elder Centre sub-base; • Kindergarten; and • Public Vehicle Park for Heavy Goods Vehicles. 	<ul style="list-style-type: none"> • The Design and Build contract was awarded in March 2025; and • Public vehicle Park funding was upgraded to Cat A in February 2025.

Other Works in North District

April 2025

Item No. & Cat.	Project Title	Estimated Cost (\$M)	Policy Sec. & Agency	Commencement Date (M/Y)	Completion Date (M/Y)	Description/ Remark	Progress/ Existing Condition
-	Public Housing Development at Queen's Hill Extension, Fanling	About 5,158	SH, HD	11/2025 (Foundation and Building Works – project adopting Design and Build procurement approach)	2031	<ul style="list-style-type: none"> • Provision of approx. 4,389 flats with associated parking and retail facilities; • One kindergarten; • Welfare facilities including: <ul style="list-style-type: none"> - a 100-place Day Care Centre for the Elderly; - a Neighbourhood Elderly Centre; - one team of Home Care Services for Frail Elderly Persons (two-team size non-kitchen based); - a 30-place Supported Hostel for Mentally Handicapped Persons; - a 50-place Hostel for Moderately Mentally Handicapped Persons; - an 80-place Integrated Vocational Rehabilitation Services Centre; - a 50-place Day Activity Centre; 	<ul style="list-style-type: none"> • CEDD's site formation works are in progress; and • CEDD targets to complete the site formation works and hand over the site to HD in November 2025.

Other Works in North District

April 2025

						<ul style="list-style-type: none">- a 50-place Hostel for Severely Mentally Handicapped Persons; and- a 100-place Long Stay Care Home.	
--	--	--	--	--	--	---	--

Other Works in North District

April 2025

Item No. & Cat.	Project Title	Estimated Cost (\$M)	Policy Sec. & Agency	Commence- ment Date (M/Y)	Completion Date (M/Y)	Description/ Remark	Progress/ Existing Condition
279LP (Cat.A)	Kong Nga Po Police Training Facilities	2,983.8	SB & ArchSD	12/2022	12/2026	<p>The Project site is located in a remote rural area about 4 kilometres away from Fanling/ Sheung Shui New Town and covers an area of about 19 hectares. The proposed scope of the project comprises –</p> <p>a. Construction of Kong Nga Po Police Training Facilities to:</p> <ol style="list-style-type: none"> 1. reprovision the existing Police Driving and Traffic Training Centre and the Weapons Training Facilities located at Fan Garden in Fanling; 2. reprovision the existing Ma Tso Lung Firing Range, Lo Wu Firing Range and a helipad located within the Kwu Tung North New Development Area (KTN NDA); and 3. construct a new Specialised Operations Training Facilities (SOTF); 	Superstructure works was substantially completed. Building services and interior works are in progress.

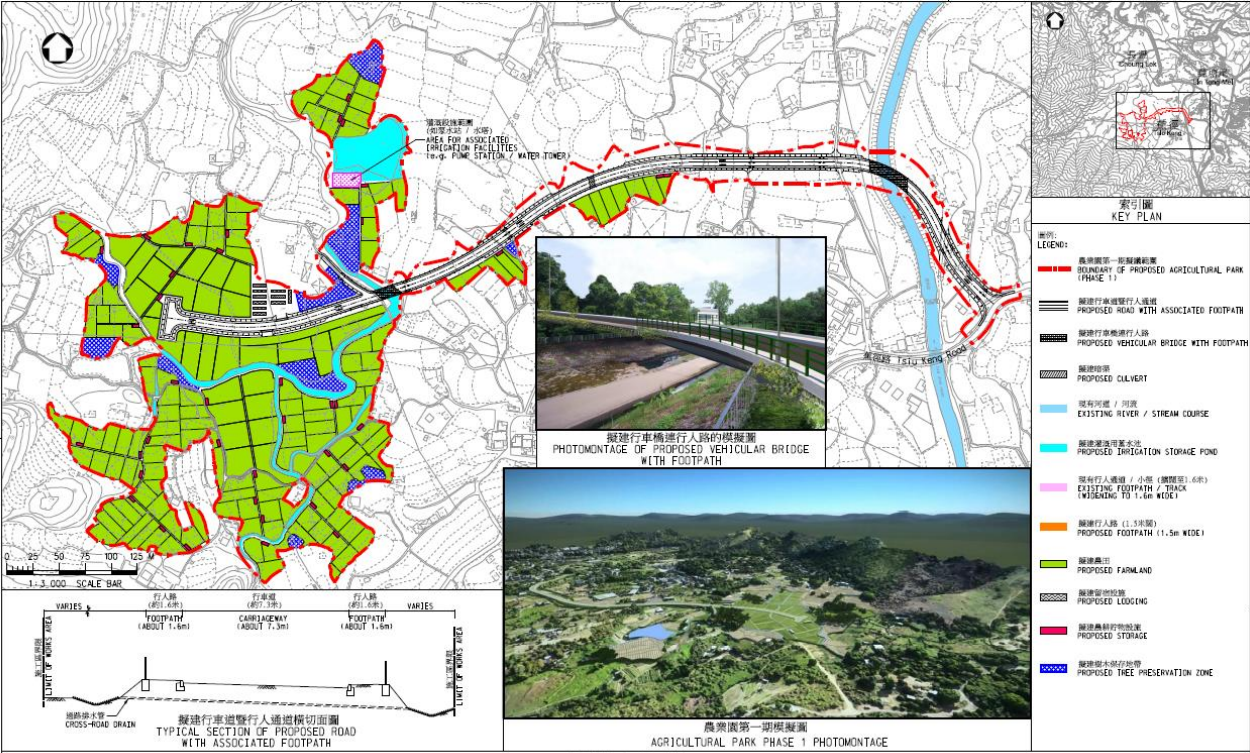
Other Works in North District

April 2025

Item No. & Cat.	Project Title	Estimated Cost (\$M)	Policy Sec. & Agency	Commence- ment Date (M/Y)	Completion Date (M/Y)	Description/ Remark	Progress/ Existing Condition
						b. Demolish the existing facilities at (a) (1) and (a) (2) above.	

Community, Leisure & Cultural Facilities in North District

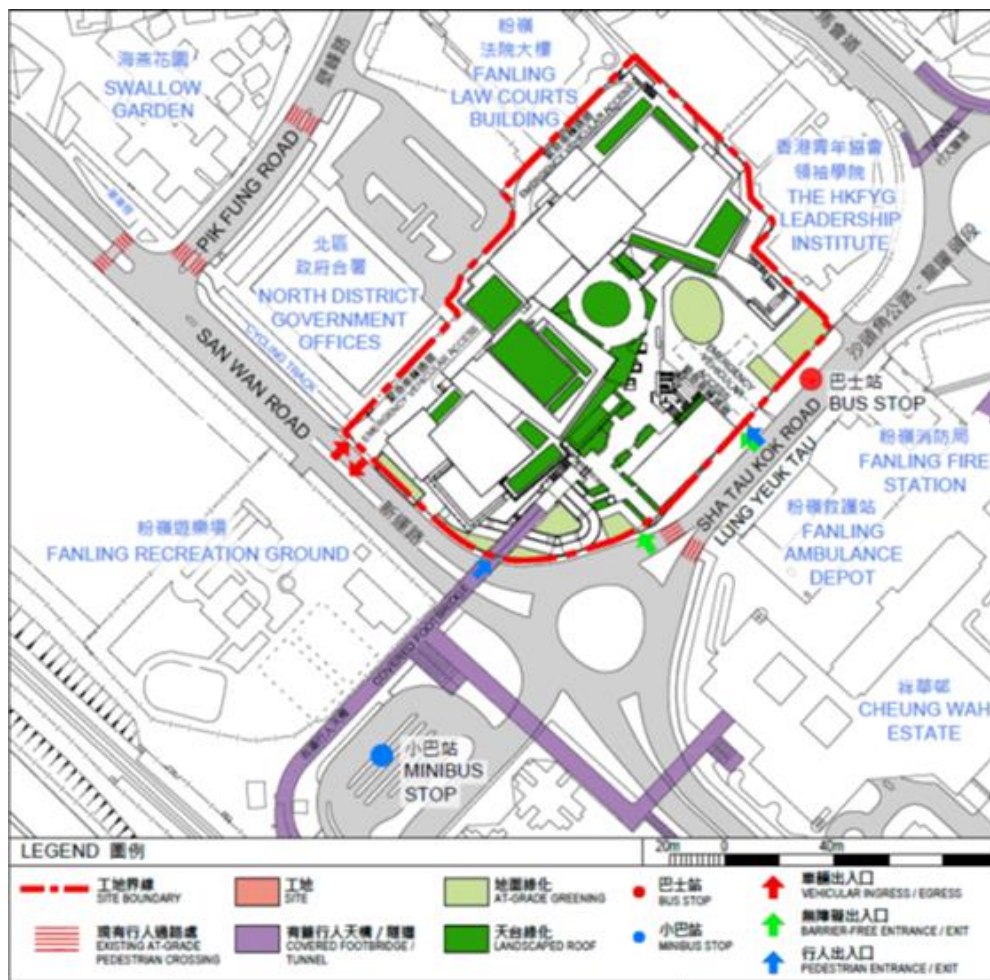
April 2025

Item No. & Cat.	Project Title	Estimated Cost (\$M)	Policy Sec. & Agency	Commencement Date (M/Y)	Completion Date (M/Y)	Description/ Remark	Progress/ Existing Condition
7473RO Cat. A	The Establishment of an Agricultural Park in Kwu Tung South – Phase 1	191.5	FHB CEDD	10/2020	6/2024	The Government announced in the 2016 Policy Address the implementation of the New Agriculture Policy (NAP) to promote the modernization and sustainable development of local agriculture. Agri-Park is being developed in two phases. The scope of Phase 1 would include the construction of access road and footpath, and associated park facilities.	The site formation and rehabilitation of fallow farmland have been progressively completed since November 2022. The whole contract works for Phase 1 were substantially completed in June 2024.
 <p>圖則名稱 Drawing Title: 工務計劃項目第7471RO號 在古洞南設立農業園 — 第一期 — 布局設計圖 PWP ITEM NO. 7471RO THE ESTABLISHMENT OF AN AGRICULTURAL PARK IN KWU TUNG SOUTH – PHASE 1 – LAYOUT PLAN</p>							

Community, Leisure & Cultural Facilities in North District

April 2025

Item No. & Cat.	Project Title	Estimated Cost (\$M)	Policy Sec. & Agency	Commencement Date (M/Y)	Completion Date (M/Y)	Description/ Remark	Progress/ Existing Condition
65RE Cat. A	New Territories East Cultural Centre in Area 11, Fanling	4,710.8	SCST LCSD ArchSD	7/2023	Q1/2028	<p>The project scope includes the construction of an auditorium (around 1400 seats), a theatre (around 700 seats), a multi-purpose studio (around 180 seats), a children's theatre, two incubator rooms, two rehearsal rooms, catering outlets, foyer, public open space; and other ancillary facilities.</p> <p>Public vehicle parking facility in two basement levels will also be provided with a total of 161 private car parking spaces and 20 motorcycle parking spaces for public use as well as 30 ancillary parking spaces. Re-provision of the existing cycle track cum footpath and bicycle parking area.</p>	<p>The project was submitted to Public Works Subcommittee (PWSC) on 7 June 2023 and was upgraded to Cat. A as approved by Finance Committee on 30 June 2023. The works commenced on 28 July 2023 and are expected to be completed in 4.5 years.</p> <p>During fiscal year 25/26, the 2-level basement including excavation, lateral support (ELS) and basement construction works will be carried out.</p>



Community, Leisure & Cultural Facilities in North District

April 2025

Item No. & Cat.	Project Title	Estimated Cost (\$M)	Policy Sec. & Agency	Commence- ment Date (M/Y)	Completion Date (M/Y)	Description/ Remark	Progress/ Existing Condition
74MM Cat. A	Community health centre cum social welfare facilities at Pak Wo Road, North District	1,780.4	HHB ArchSD	8/2020	5/2024	<p>The scope of the project comprises (i) demolition of the existing two-storey disused school building; and (ii) construction of a new joint-user building in-situ, to accommodate the following facilities:</p> <p>(a) a community health centre (CHC), operated by the Hospital Authority (HA);</p> <p>(b) a maternal and child health centre (MCHC), operated by the Department of Health (DH);</p> <p>(c) a reprovisioned student health service centre (SHSC), operated by the DH;</p> <p>(d) a reprovisioned elderly health centre (EHC) cum office of the visiting health teams (VHTs), operated by the DH;</p> <p>(e) a reprovisioned office of the School Immunisation Team (SIT), operated by the DH;</p> <p>(f) a day care centre for the elderly (DCCE), operated by a non-governmental organisation (NGO) subvented by the Social Welfare Department (SWD); and</p>	Project completion was achieved in May 2024. Substantial service commissioning was achieved in December 2024.

Community, Leisure & Cultural Facilities in North District

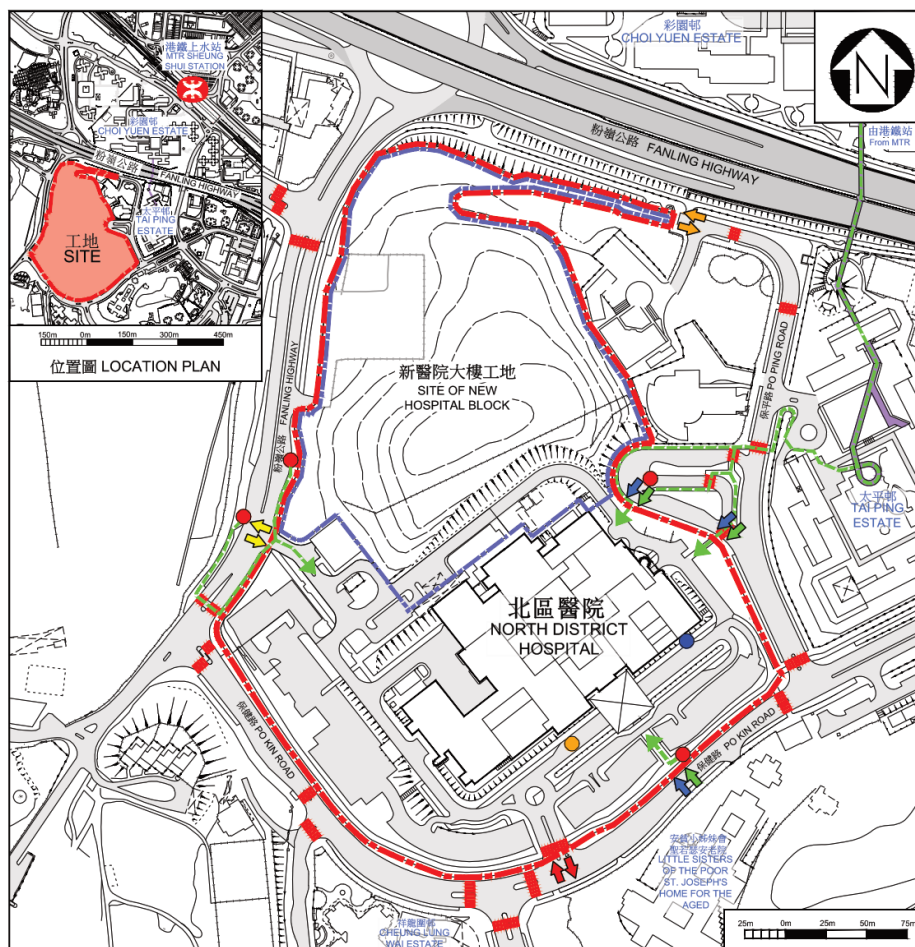
April 2025

Item No. & Cat.	Project Title	Estimated Cost (\$M)	Policy Sec. & Agency	Commence- ment Date (M/Y)	Completion Date (M/Y)	Description/ Remark	Progress/ Existing Condition
						(g) an integrated community centre for mental wellness (ICCMW), operated by an NGO subvented by the SWD.	

Community, Leisure & Cultural Facilities in North District

April 2025

Item No. & Cat.	Project Title	Estimated Cost (\$M)	Policy Sec. & Agency	Commencement Date (M/Y)	Completion Date (M/Y)	Description/ Remark	Progress/ Existing Condition
005MI Cat. A	Expansion of North District Hospital – site formation and foundation works	2,141.0	SH ArchSD	7/2021	12/2024	The scope of the project mainly comprises site formation and foundation works for the New Acute Block of the Expansion of North District Hospital.	The site formation and foundation works commenced in July 2021 and completed in December 2024.



Community, Leisure & Cultural Facilities in North District

April 2025

Item No. & Cat.	Project Title	Estimated Cost (\$M)	Policy Sec. & Agency	Commencement Date (M/Y)	Completion Date (M/Y)	Description/ Remark	Progress/ Existing Condition
003MI Cat. A	Expansion of North District Hospital	32,508.2	SH ArchSD	12/2024	Q2 2031	<p>The scope of the project mainly comprises superstructure and associated works as follows:</p> <p>(a) construction of a new acute block;</p> <p>(b) construction of link bridges and tunnels connecting the new acute block and the existing building;</p> <p>(c) associated external and landscaping works;</p> <p>(d) construction of a 132kV substation for the North District Hospital; and</p> <p>(e) refurbishment, alteration and addition (A&A) of the existing building.</p>	The construction works commenced in December 2024 with target completion by Q2 2031. Construction works of the new acute block in progress.

Community, Leisure & Cultural Facilities in North District

April 2025

Item No. & Cat.	Project Title	Estimated Cost (\$M)	Policy Sec. & Agency	Commencement Date (M/Y)	Completion Date (M/Y)	Description/ Remark	Progress/ Existing Condition
23TP Cat. A	Public Vehicle Park at Areas 4 and 30 (Site 2), Sheung Shui	385.1	TLB HD	Q3 2021	Q4 2024	The scope of the proposed works comprises – (a) a nine-storey aboveground public vehicle park (PVP) 1 providing about 320 and about six public parking spaces for private cars (PCs) and light goods vehicles (LGVs) respectively; and (b) ancillary facilities, including a shroff office, plant rooms, etc.	Construction works was completed.
<div> <p>工地平面圖 SITE PLAN</p> <p>23TP 上水第4及第30區(地盤2)的公眾停車場 PUBLIC VEHICLE PARK AT AREAS 4 AND 30 (SITE 2), SHEUNG SHUI</p> <p>圖例 LEGEND:</p> <ul style="list-style-type: none"> 工地界線 SITE BOUNDARY 上水第4及第30區(地盤2)公眾房屋發展界線 PUBLIC HOUSING DEVELOPMENT BOUNDARY AT AREAS 4 AND 30 (SITE 2), SHEUNG SHUI 車輛出入口 VEHICULAR INGRESS / EGRESS 無障礙出入口 BARRIER-FREE ENTRANCE / EXIT 行人出入口 PEDESTRIAN ENTRANCE / EXIT 現有行人天橋 EXISTING FOOTBRIDGE 地面綠化 (由香港房屋委員會承擔) AT-GRADE GREENING (BY HKHA) 擬建行人天橋 (由香港房屋委員會承擔) PROPOSED PEDESTRIAN FOOTBRIDGE (BY HKHA) 公眾停車場大樓 PUBLIC VEHICLE PARK BUILDING <p>ARCHITECTURAL SERVICES DEPARTMENT 建築署</p> </div>							

Community, Leisure & Cultural Facilities in North District

April 2025

Item No. & Cat.	Project Title	Estimated Cost (\$M)	Policy Sec. & Agency	Commencement Date (M/Y)	Completion Date (M/Y)	Description/ Remark	Progress/ Existing Condition
1HL-2 Cat. A	Light Public Housing at TWGHS Ma Kam Chan Memorial Primary School, Sheung Shui	55.3	HB ArchSD	Q4 2024	Q4 2025	To provide around 110 light public housing domestic units by conversion of existing Vacant School Premises at TWGHS Ma Kam Chan Memorial Primary School, Sheung Shui.	The project was commenced in November 2024 and expected to be completed by Q4 2025. The alteration works for domestic units are in progress.

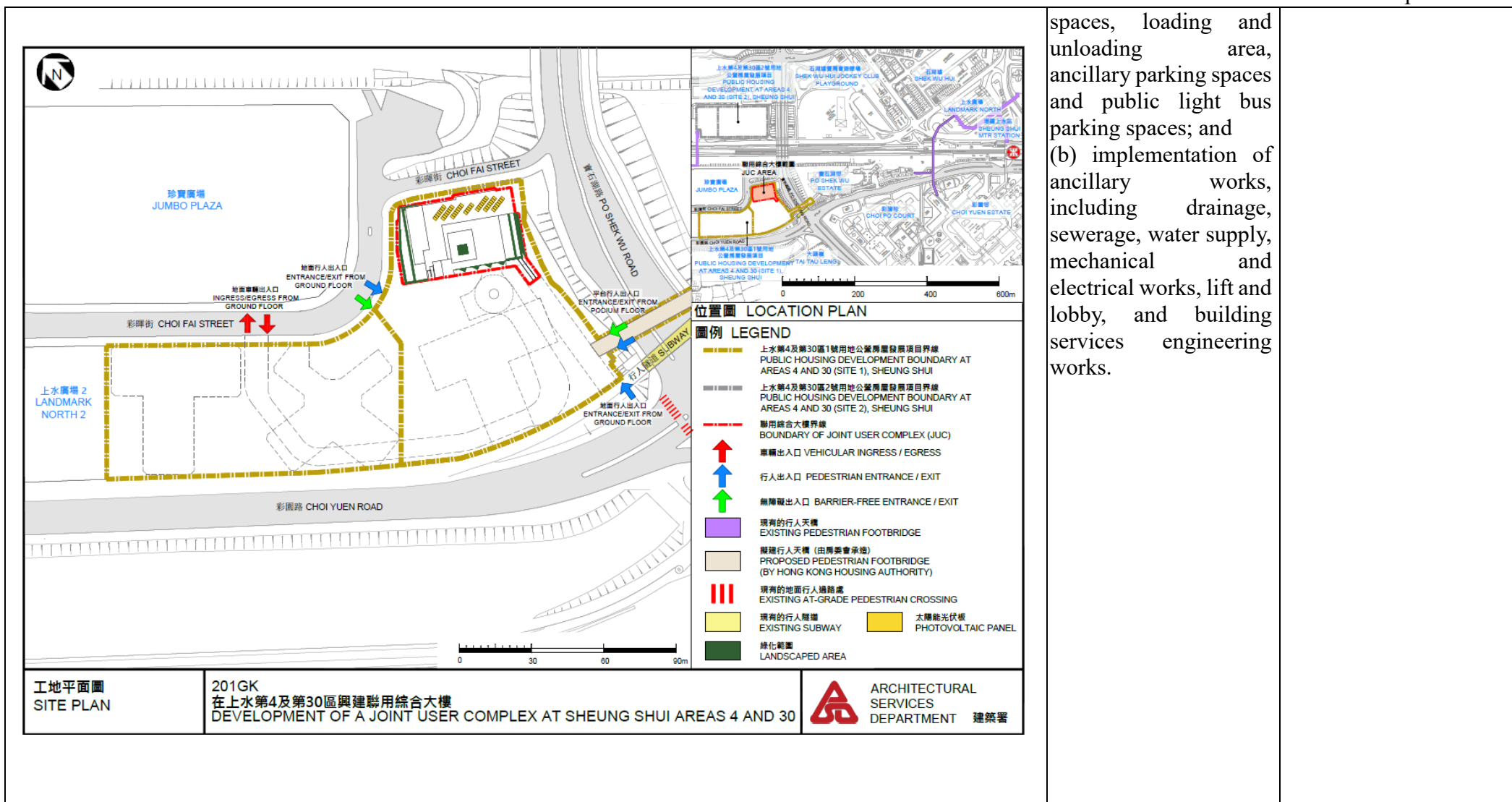
Community, Leisure & Cultural Facilities in North District

April 2025

Item No. & Cat.	Project Title	Estimated Cost (\$M)	Policy Sec. & Agency	Commence- ment Date (M/Y)	Completion Date (M/Y)	Description/ Remark	Progress/ Existing Condition
201GK (Cat.A)	Development of a Joint User Complex at Sheung Shui Areas 4 and 30	534.0	HB HD	Q4 2024	Q4 2029	The proposed scope comprises – (a) development of a JUC to provide – (i) a DHC to provide primary healthcare services; (ii) social welfare facilities, including a HSMH with 50 residential care places and a DAC with 50 service places; (iii) a CH, including a multi-purpose hall with a seating capacity of about 450 and a stage, a multi-purpose stage meeting room, a stage store room, male and female dressing rooms, a multipurpose conference room, a management office with a store room, a babycare room and toilets, etc; (iv) other ancillary facilities, including accessible parking	Foundation and superstructure works are in progress.

Community, Leisure & Cultural Facilities in North District

April 2025

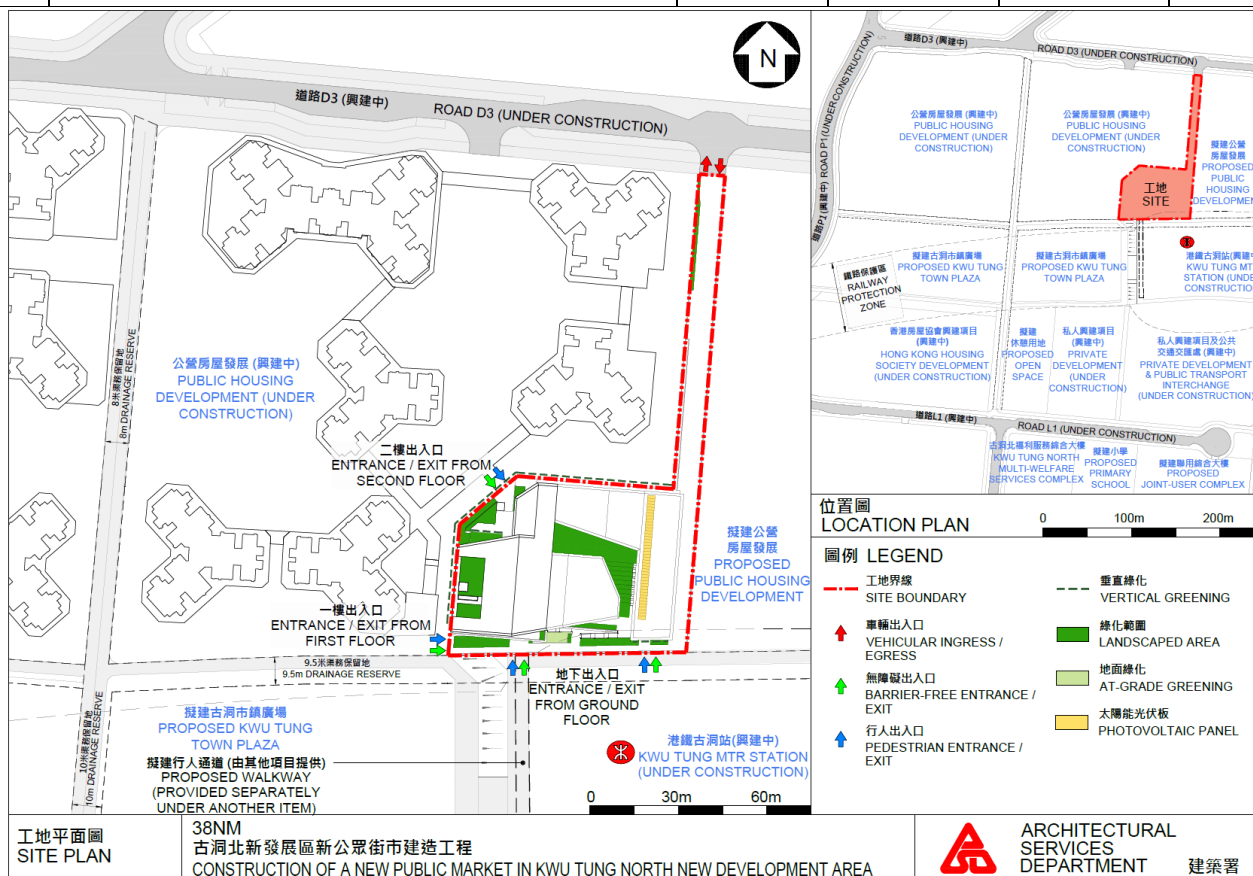


spaces, loading and unloading area, ancillary parking spaces and public light bus parking spaces; and
 (b) implementation of ancillary works, including drainage, sewerage, water supply, mechanical and electrical works, lift and lobby, and building services engineering works.

Community, Leisure & Cultural Facilities in North District

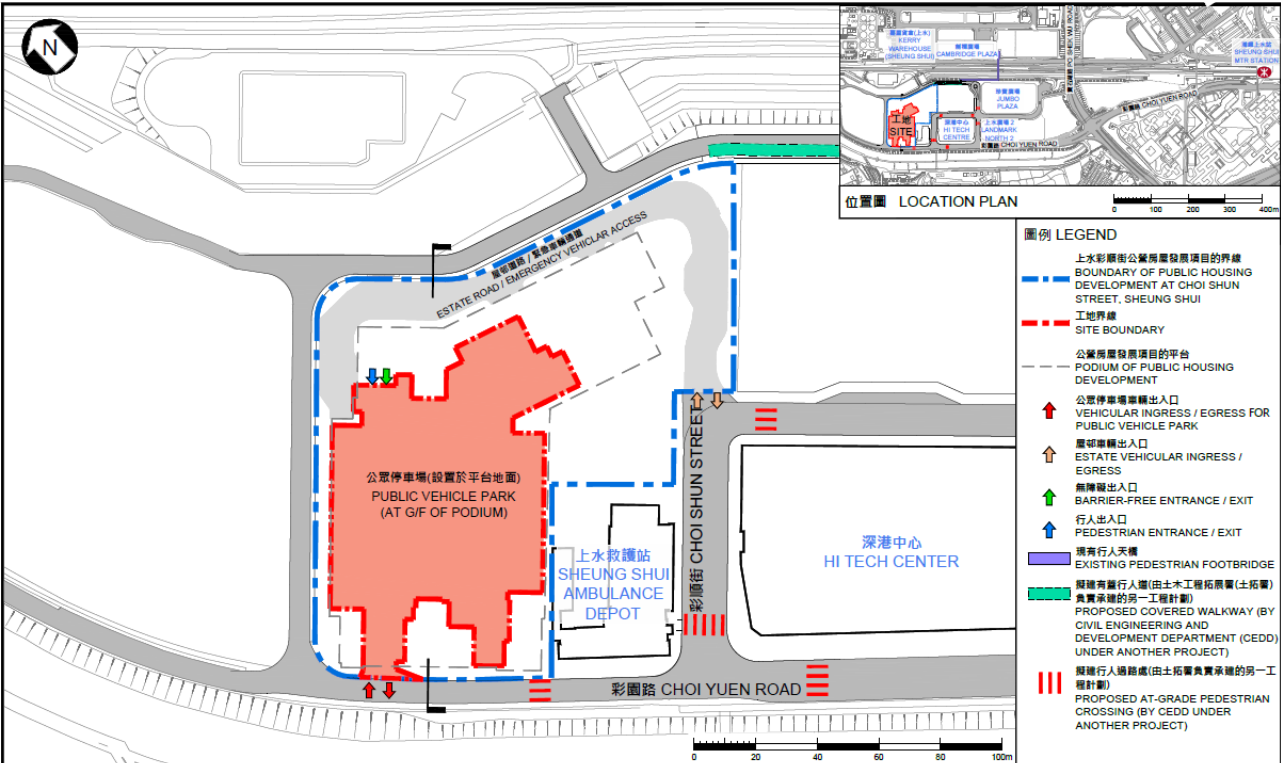
April 2025

Item No. & Cat.	Project Title	Estimated Cost (\$M)	Policy Sec. & Agency	Commencement Date (M/Y)	Completion Date (M/Y)	Description/ Remark	Progress/ Existing Condition
38NM (Cat.A)	Construction of a New Public Market in Kwu Tung North New Development Area	787.9	FEHD ArchSD	Q4 2024	Q4 2028	The project includes the construction of a four-storey market building with air-conditioning.	Piling design submitted to SCU for approval.



Community, Leisure & Cultural Facilities in North District

April 2025

Item No. & Cat.	Project Title	Estimated Cost (\$M)	Policy Sec. & Agency	Commencement Date (M/Y)	Completion Date (M/Y)	Description/ Remark	Progress/ Existing Condition
32TP (Cat.A)	Public Vehicle Park at Choi Shun Street, Sheung Shui	160.2	TLB HD	Q1 2025	Q3 2029	The proposed scope of the project comprises the construction of a public vehicle park (PVP), providing - (a) 58 parking spaces for heavy goods vehicles (HGVs); and (b) ancillary facilities, including a car park management cum shroff office, security guard booth, and plant rooms, etc.	Foundation and superstructure works are in progress.
<div>  <p>圖例 LEGEND</p> <ul style="list-style-type: none"> 上水彩順街公屋發展項目的界線 BOUNDARY OF PUBLIC HOUSING DEVELOPMENT AT CHOI SHUN STREET, SHEUNG SHUI 工地界線 SITE BOUNDARY 公屋發展項目的平台 PODIUM OF PUBLIC HOUSING DEVELOPMENT 公眾停車場車輛出入口 VEHICULAR INGRESS / EGRESS FOR PUBLIC VEHICLE PARK 屋邨車輛出入口 ESTATE VEHICULAR INGRESS / EGRESS 無障礙出入口 BARRIER-FREE ENTRANCE / EXIT 行人出入口 PEDESTRIAN ENTRANCE / EXIT 現有行人天橋 EXISTING PEDESTRIAN FOOTBRIDGE 擬議有蓋行人道(由土木工程拓展署(土拓署)負責承建的另一工程計劃) PROPOSED COVERED WALKWAY (BY CIVIL ENGINEERING AND DEVELOPMENT DEPARTMENT (CEDD) UNDER ANOTHER PROJECT) 擬議行人過路處(由土拓署負責承建的另一工程計劃) PROPOSED AT-GRADE PEDESTRIAN CROSSING (BY CEDD UNDER ANOTHER PROJECT) </div> <div> <p>工地平面圖 SITE PLAN</p> <p>工程計劃項目編號 3032TP 上水彩順街公眾停車場 PWP ITEM NO. 3032TP PUBLIC VEHICLE PARK AT CHOI SHUN STREET, SHEUNG SHUI</p> <p>ARCHITECTURAL SERVICES DEPARTMENT 建築署</p> </div>							

- End -