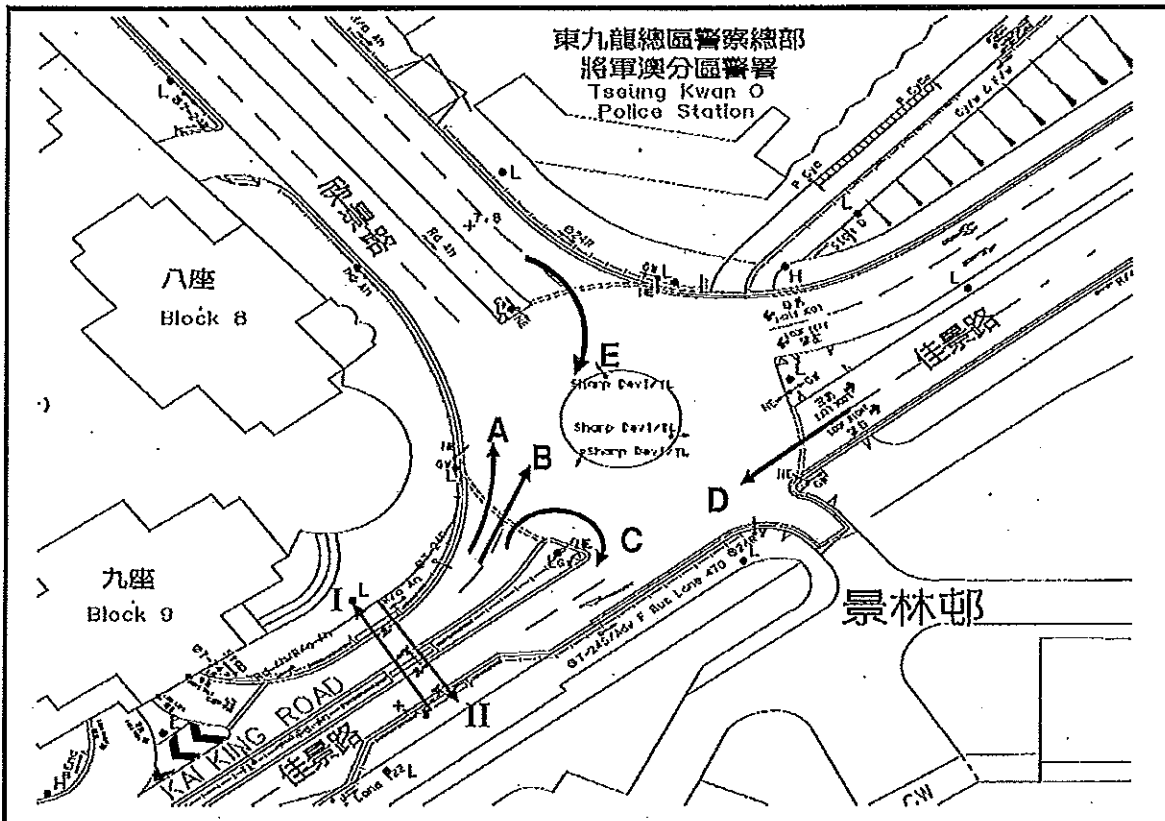


TRAFFIC ENGINEERING (N.T.E.) DIVISION

LOCATION : J/O Kai King Road and Yan King Road, Tseung Kwan O
 DATE & DAY : 16.01.2014 (Thu) WEATHER : Fine



TIME	Pedestrians		Total	Vehicles					Total
	I	II		A	B	C	D	E	
0730-0745	303	79	382	8	24	0	15	3	50
0745-0800	394	107	501	10	23	0	16	2	51
0800-0815	349	163	512	5	23	0	19	2	49
0815-0830	366	136	502	4	16	0	11	2	33
0830-0845	376	195	571	1	14	0	9	1	25
0845-0900	341	174	515	8	23	1	23	2	57
0900-0915	302	186	488	3	18	0	9	3	33
0915-0930	178	155	333	1	9	0	8	6	24
1730-1745	192	252	444	4	23	0	17	9	53
1745-1800	188	294	482	7	25	1	26	7	66
1800-1815	188	261	449	7	19	1	35	12	74
1815-1830	185	357	542	5	26	1	48	7	87
1830-1845	155	376	531	7	28	1	44	12	92
1845-1900	143	292	435	9	19	0	35	13	76
1900-1915	124	295	419	3	14	1	51	12	81