

西貢區議會 Sai Kung District Council

(一) 渠務署的研究計劃：4402DS號 -
搬遷西貢污水處理廠往岩洞的可行性研究

(二) 土木工程拓展署的研究計劃：
相連搬遷西貢污水處理廠的初步綜合填海發展研究

- (i) Drainage Services Department's Study: 4402DS - Feasibility study on relocation of Sai Kung sewage treatment works to caverns
- (ii) Civil Engineering and Development Department's Study: Preliminary integrated development study on reclamation in association with relocation of Sai Kung sewage treatment works

大綱 Outline

1. 目的 Objective
2. 搬遷西貢污水處理廠計劃
Proposal to relocate Sai Kung sewage treatment works (SKSTW) to caverns
3. 可行性研究 Feasibility Study
4. 未來工作 Next Steps

目的 Objective

就可行性研究：

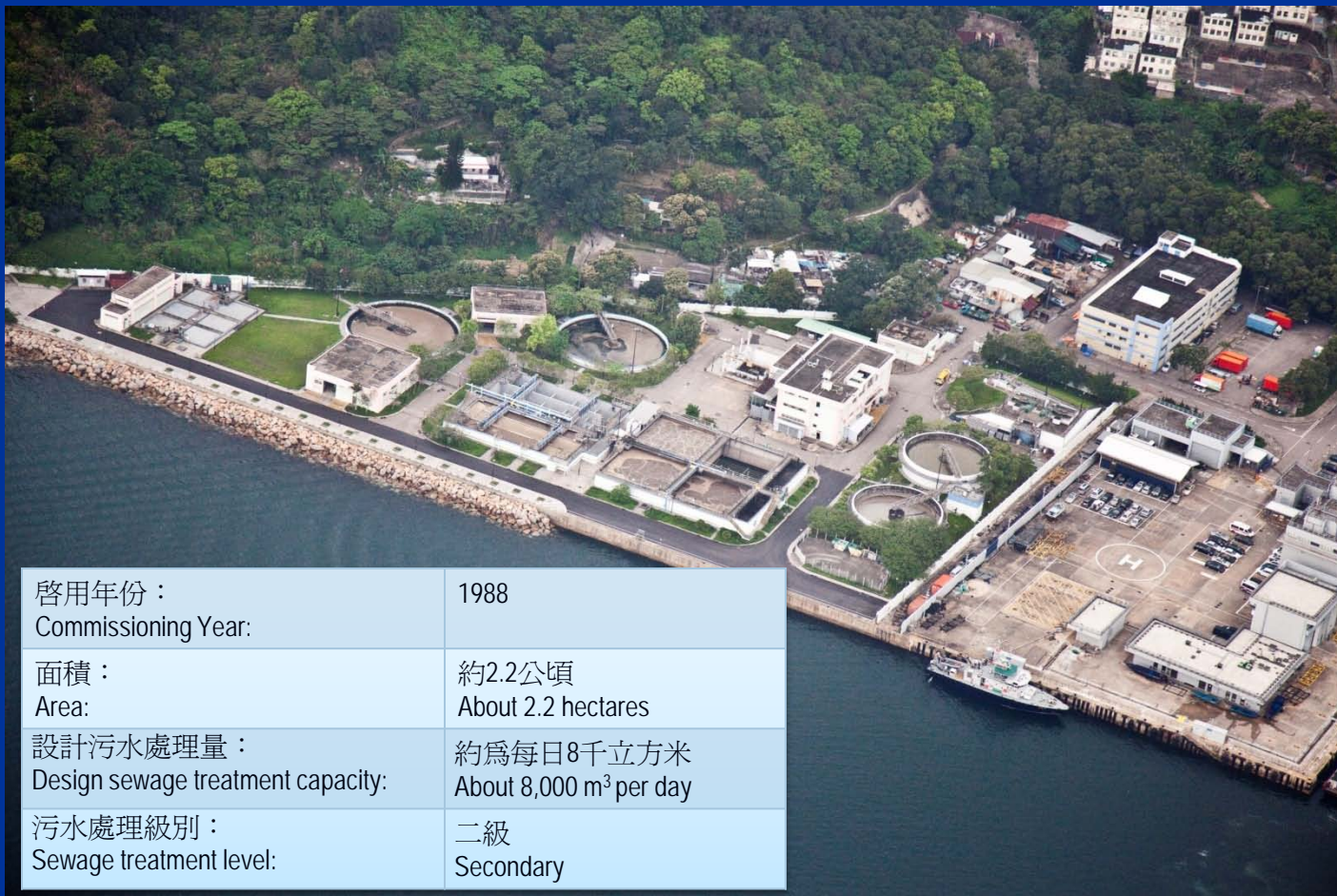
In respect of feasibility study:

- 諮詢各議員的意見
Seek Members' views
- 支持渠務署向立法會財務委員會申請撥款
Support DSD to seek funding from Finance Committee of the Legislative Council

優化土地供應策略 Enhancing Land Supply Strategy

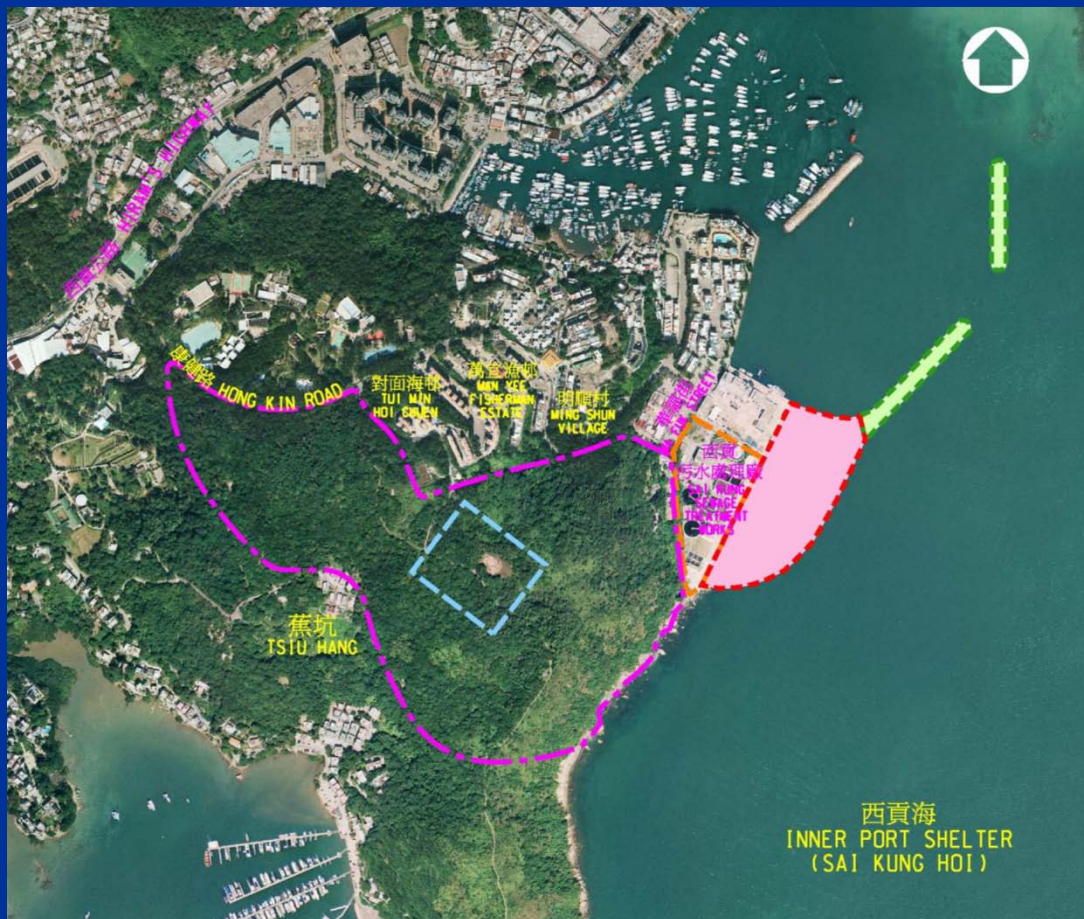


搬遷西貢污水處理廠計劃 Proposal to relocate SKSTW to caverns



啓用年份： Commissioning Year:	1988
面積： Area:	約2.2公頃 About 2.2 hectares
設計污水處理量： Design sewage treatment capacity:	約為每日8千立方米 About 8,000 m ³ per day
污水處理級別： Sewage treatment level:	二級 Secondary

搬遷西貢污水處理廠計劃



搬遷西貢污水處理廠計劃

Proposal to relocate SKSTW to caverns

- 全面更新設施及提升處理量、更先進污水處理技術
Comprehensive upgrading of facilities and treatment capacity, more advanced sewage treatment technology
- 改善環境（例如：更有效的氣味控制）
Improvement to environment (e.g. more effective odour control)
- 騰出土地作有利社區用途
Release land for beneficial uses to residents

搬遷西貢污水處理廠計劃 Proposal to relocate SKSTW to caverns

初步選址的主要考慮因素：

Major consideration factors for preliminary location:

- 地質適合建造岩洞
Ground condition suitable for cavern development
- 鄰近現有西貢污水處理廠
Near to existing SKSTW
- 大部份為政府土地
Majority is government land

可行性研究範圍 Scope of Feasibility Study

- 初步技術及影響評估
Preliminary technical and impact assessments
- 計劃的成本效益
Cost-effectiveness of the proposal
- 公眾參與活動及諮詢持份者
Public engagement and consultation with stakeholders
- 相關初步勘測及勘查工作
Associated preliminary investigations and other surveys

可行性研究範圍 Scope of Feasibility Study

特別在三方面的評估及緩解措施：

3 particular aspects of assessment and mitigation measures:

- 初步環境影響評估（空氣、噪音、水質、生態、廢物管理、視覺及景觀）

Preliminary environmental impacts (air, noise, water quality, ecology, waste management, visual/landscape)

- 初步交通影響評估

Preliminary traffic impact

- 初步屋宇結構影響評估

Preliminary structural impact to buildings

可行性研究預算及時間表

Cost and Programme of Feasibility Study

- 預計費用約為四千一百萬元
Estimate cost about \$41 million
- 2014年第三季至2016年第三季
3rd Quarter 2014 to 3rd Quarter 2016

未來工作 Next Steps

- 確立計劃的可行性
Establish feasibility of the proposal
- 進行勘察研究及設計
Conduct investigation and design
- 展開搬遷工程
Commence relocation works



土木工程拓展署

Civil Engineering & Development Department

相連搬遷西貢污水處理廠的初步綜合填海發展研究

Preliminary integrated development study on reclamation in association with relocation of Sai Kung sewage treatment works

1. 研究目的 Objective of the Study
2. 研究範圍 Scope of the Study
3. 未來工作 Next Steps



1. 研究目的 Objective of the Study

- 就相連搬遷西貢污水處理廠進行綜合填海及防波堤發展的初步研究

To carry out preliminary study on integrated development of reclamation and breakwater in association with relocation of Sai Kung sewage treatment works



土木工程拓展署工程
CIVIL ENGINEERING AND
DEVELOPMENT DEPARTMENT (CEDD)'S
WORKS

 擬建的填海範圍
PROPOSED RECLAMATION
AREA


 擬建的防波堤
PROPOSED BREAKWATER

圖例 LEGEND:

渠務署工程
DRAINAGE SERVICES
DEPARTMENT (DSD)'S WORKS

 現有西貢污水處理廠
EXISTING SAI KUNG
SEWAGE TREATMENT WORKS

 重置後西貢污水處理廠的
初步位置
PRELIMINARY LOCATION OF
RELOCATED SAI KUNG
SEWAGE TREATMENT WORKS

 重置西貢污水處理廠位置
的研究範圍
STUDY AREA FOR LOCATION
OF RELOCATED SAI KUNG
SEWAGE TREATMENT WORKS



2. 研究範圍 Scope of the Study

- 為相連的西貢近岸填海及擬建防波堤工程進行工程可行性研究，包括相關的初步技術和影響評估、擬訂工程設計大綱及制定施工策略和時間表

Engineering feasibility study on associated near-shore reclamation in Sai Kung and proposed breakwater, including relevant preliminary technical and impact assessments, preparation of outline design for the engineering works and formulation of implementation strategies and programmes



2. 研究範圍 Scope of the Study

- 為搬遷西貢污水處理廠後所騰出的土地及填海地點進行初步規劃研究

Preliminary planning study on the released land after relocation of the SKSTW and reclamation site

- 配合擬議岩洞研究舉辦的公眾參與活動，諮詢相關持份者

Consulting relevant stakeholders in coordination with the public engagement exercises under the Cavern Study

- 進行初步的勘測／勘查工作

Carrying out associated preliminary investigations and other surveys



土木工程拓展署

Civil Engineering & Development Department

可行性研究時間表 Programme of the Study

- 2014年第三季至2015年第四季
3rd Quarter 2014 to 4th Quarter 2015



3. 未來工作 Next Steps

- 進行詳細規劃及設計研究
Conducting detailed planning and design studies
- 進行法定程序
Proceeding with statutory procedures



渠務署 Drainage Services Department



土木工程拓展署

Civil Engineering & Development Department

敬請各議員支持

Members' support is sought

謝謝

Thank you