

你還記得嗎？

Do You Remember?



舊水上樂園

OLD Water World

回憶  
Memories...



係時候啦

[ ] It's TIME

Classical

經典

Commercials

廣告



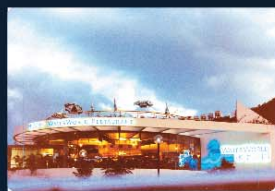
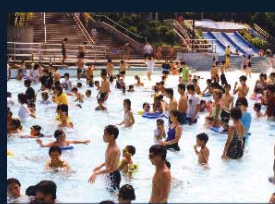
VCRBase



讓香港人  
重拾昔日  
水上樂園  
的美好回憶



Re-connect the people  
of Hong Kong with fond  
Water World MEMORIES





舊水上樂園

OLD Water World

回憶  
Memories...



係時候啦



It's TIME

CONCEPTUAL Video of TSW



## 為什麼要興建水上樂園 Why a Water Park?

令公園設施更多元化，進一步強化海洋公園作為區內頂尖旅遊景點的地位

Diversify and strengthen Ocean Park's position as a top regional tourism attraction.

增加基建以滿足旅客增長

Needed infrastructure for growing destination tourism

促進香港經濟發展

Contribute to the Hong Kong economy

提昇香港社會的生活質素

Intangible benefits to the quality of life for the local community

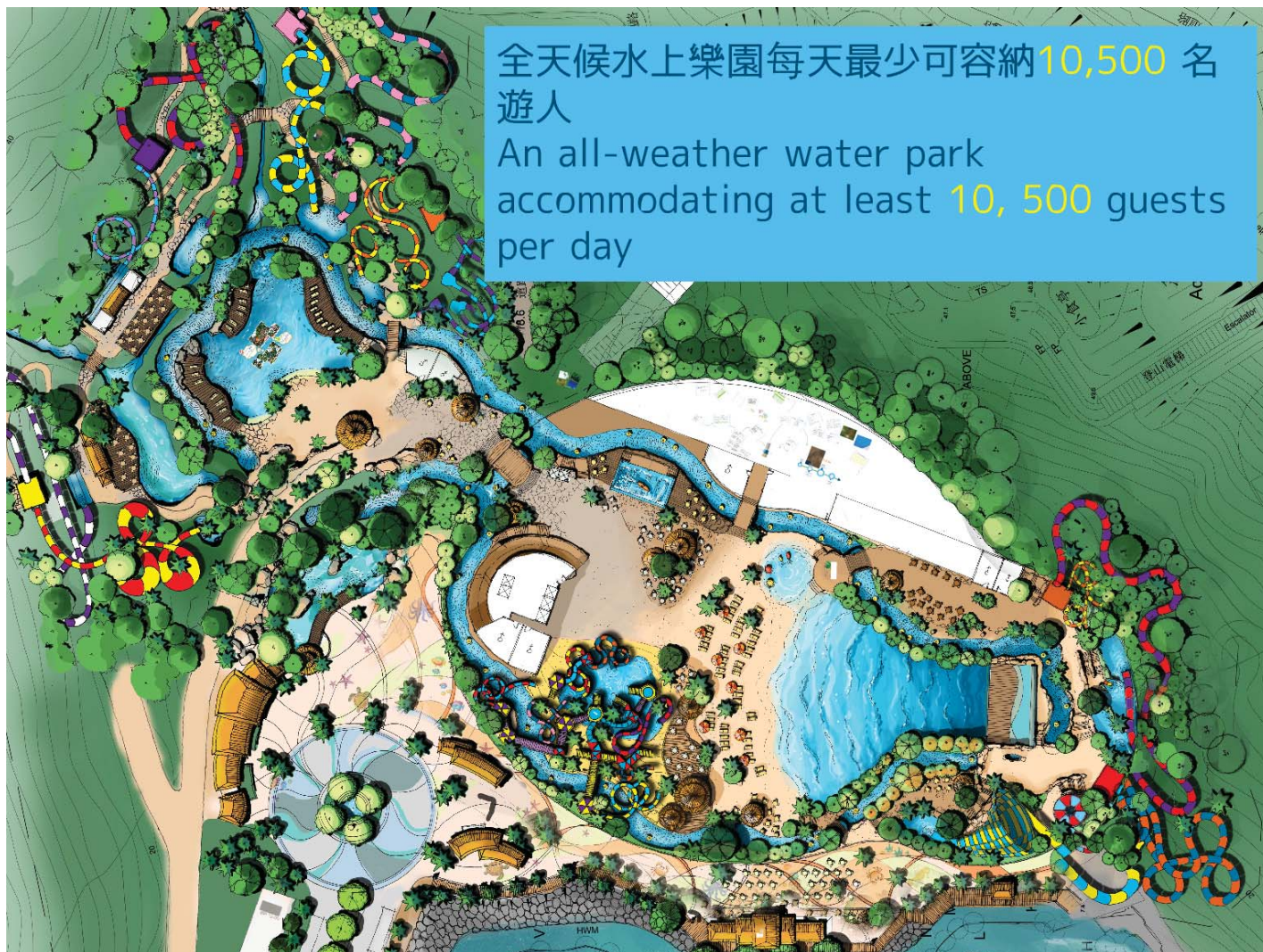
讓香港人重拾昔日水上樂園的美好回憶

Reconnect the people of Hong Kong with fond Water World Memories

延長旅客的訪港時間

Longer length of stays





半透明的弧形屋頂，將成為香港的建築地標之一

Featuring an architecturally **ICONIC**, translucent and sweeping roof structure



25

Attractions

including 景點  
包括

River adventure  
水泡歷奇

&



13

嶄新的  
state-of-the-art

水上 giant  
water

遊樂設施  
rides



Dedicated

Entertainment

Retail

特備

娛樂

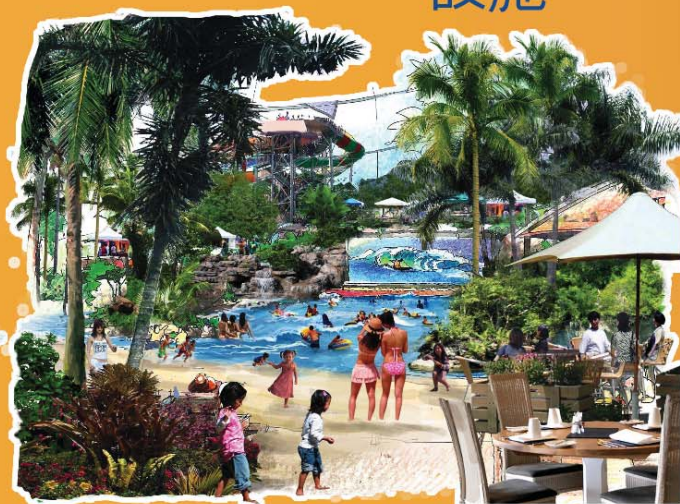
Dining

areas

零售

餐飲

設施







水上樂園設計將配合大自然環境，並設有教育及保育設施，適合一家大小



Designed with environmental sensitivities and will integrate effective educational, as well as conservation oriented components in its family entertainment offerings



## 環境影響評估

## Environmental Impact Assessment

海洋公園就生態、環保及外觀議題正與環境保護署保持密切聯繫

Ocean Park is in close liaison with EPD on all ecological, environmental and visual assessment



# 環保設計

## Eco-friendly Features

水上樂園的設計是將能源和水的消耗，以及廢物的製造量減至最少

Water Park will be designed to minimize use of energy, water and waste production

不論設計或物料選用時，均會考慮環保因素

Design and materials selection will be done with environmental sensitivities in mind

減碳設計包括：燃氣吸收式製冷技術、重用多餘熱能於沐浴、泳池及餐廳等、採用海水製冷以提高效率、自然通風系統、環保水源過濾系統（regenerative media water filtration systems）、採用天然光照明及太陽能恒溫等

Ways to minimize carbon footprint: gas absorption chiller technology, reusing heat waste for hot water use in showers, pools, restaurants etc, and sea water cooling for higher efficiency, natural ventilation, waste heat recovery, “regenerative media” water filtration systems, natural lighting and heating through solar energy

水上樂園頂部以ETFE作為建築物料 – 創新和具反應力的建築外層物料 – 打造可呼吸的建築物

Use ETFE – an innovative and responsive building envelope – as the roof for the Indoor Building

- 自動感應器能於夏季開啓氣孔抽走熱空氣，並在冬季閉孔以作保溫
- 讓日光照暖室內，令植物健康成長，豐富室內的園林景觀
- 高效的建築物結構設計可減少物料用量和建築時間，令整個發展項目的碳足印減至最低

- Automatically controlled sensors can be opened for hot air extraction in summer and closed for insulation in winter
- Allow daylight to warm the internal environment, allowing healthy plant growth provided as part of the enriching interior landscaping
- Efficient building structure design reduces both the use of materials and the construction times, and also minimizes the carbon footprint of the project

由於水上樂園尚有四年才落成，我們會在項目興建期間密切留意市場上的最新技術和模式，做到與時並進

As the completion of the waterpark is 4 years away, and recognizing the speed at which technologies and practices are introduced, we will remain vigilant in our pursuit of the latest technology, as we progress the project.

# 交通影響評估

## Traffic Impact Assessment

據最新的遊人調查報告顯示，超過9成遊人  
乘搭公共交通工具往來海洋公園

港鐵南港島綫通行後，將鼓勵更多遊人乘搭  
公共交通

安排穿梭巴士往來水上樂園、海洋公園港  
鐵站及黃竹坑港鐵站

依據已完成的交通影響之評估報告，水上  
樂園將設有一個可容納 250個私家車位及  
10 個旅遊巴車位的地下停車場

大樹灣入口在2011年1月關閉前，每天平均  
迎接約15,000 至18,000名遊人，佔整體  
遊客數字百分之33至45，比水上樂園的每  
天預計入場人次(約10,000人)為高。因  
此，我們相信水上樂園開放後可充裕應付預  
期之人流和交通需求

我們非常有信心 水上樂園並不會為香港仔  
及黃竹坑區帶來重大的交通影響

Recent guest surveys show over 90% of guests  
arrive and depart by public transport

Opening of the MTR South Island Line will  
further push guest travelling patterns in favor  
of using public transport

Arrange shuttle bus service between the  
Waterpark, the MTRC Ocean Park and Wong  
Chuk Hang Stations

An underground car park will be provided at the  
Waterpark, for 250 cars and 10 coaches, based  
on traffic impact assessment work already  
carried out

Before its closing in Jan 2011, the Tai Shue Wan  
gate on average received 33 – 45% of our daily  
Park attendance (around 15,000 – 18,000), which  
is more than our expected daily attendance for the  
Water Park (around 10,000 per day). As such, we  
believe it has ample capacity to cater to the  
amount of people and traffic coming through once  
the Water Park is opened

We are confident that the Waterpark will not  
induce any significant traffic impacts to the  
Aberdeen and Wong Chuk Hang area

### ★ ★ ★ ★ ★

## 舊 OLD and NEW 新

## Water Park 水上樂園

## COMPARISON

## 對照

30,470 sqm 平方米

59,400 sqm 平方米

SIZE 面積

5月至9月  
May ~ Sep

全年無休  
All year round

Operation Period 營運時段

5,000

7,000

Instantaneous Capacity 即時容客量



## No. of Attractions 設施數目

9

- 激流旅程
- 浪濤灣
- 巨型滑水梯
- 五彩天梯
- 游泳池
- 開心河
- 耍水池
- 潛水板
- 嬉水池
- Rapids Ride
- Wave Pool
- Giant Water Slides
- Super Slides
- Swimming Pool
- Lazy River
- Water Play Area
- Dive Boards
- Splash Pool

25

- 2個人造浪池
- 開心河
- 兒童遊水樂園
- 悠閒水空間
- 2個主題沙灘
- 人造滑浪灘
- 13條滑水梯
- 其他娛樂設施，包括臉部彩繪及各種遊戲
- Wave Pool x 2
- Lazy River
- Children's Activity Area
- Premium Pool & Cabanas
- Themed Beaches x 2
- Wave Rider
- 13 Dynamic and state-of-the-art slides
- Entertainment areas such as face painting, games, etc

## 舊 OLD and NEW 新 Water Park 水上樂園 COMPARISON 對照

舊  
OLD  
WATER PARK  
水上樂園

30,470 sqm 平方米

59,400 sqm 平方米

SIZE 面積

5月至9月  
May ~ Sep

全年無休  
All year round

Operation Period 營運時段

5,000

7,000

Instantaneous Capacity 即時容客量

No. of Attractions 設施數目

9

- 激流旅程
- 浪濤灣
- 巨型滑水梯
- 五彩天梯
- 游泳池
- 開心河
- 耍水池
- 潛水板
- 嬉水池
- Rapids Ride
- Wave Pool
- Giant Water Slides
- Super Slides
- Swimming Pool
- Lazy River
- Water Play Area
- Dive Boards
- Splash Pool

25

- 2個人造浪池
- 開心河
- 兒童遊水樂園
- 悠閒水空間
- 2個主題沙灘
- 人造滑浪灘
- 13條滑水梯
- 其他娛樂設施，包括臉部彩繪及各種遊戲
- Wave Pool x 2
- Lazy River
- Children's Activity Area
- Premium Pool & Cabanas
- Themed Beaches x 2
- Wave Rider
- 13 Dynamic and state-of-the-art slides
- Entertainment areas such as face painting, games, etc

## 對香港的貢獻 CONTRIBUTIONS TO HONG KONG

### 促進香港經濟繁榮

- 興建水上樂園的一次性經濟效益：

港幣12億6千萬

- 水上樂園每年營運及為香港旅遊業帶來之經濟效益：

港幣8.42億元(2018) 至港幣12.4億(2048)

創造2,900個(2018)至4,290個新職位(2048)

- 由2014年至2048年間為本地生總值作出的貢獻港幣180億元

### Contribute to the Hong Kong economy -

- One-time benefit from the construction of the water park

HK\$1.26 billion in value

- Ongoing yearly benefits from the operation of the water park and accompanying incremental benefits to the tourism industry:

HK\$842 million (2018) to HK\$1.24 billion (2048)

2,900 new jobs (2018) to 4,290 new jobs (2048)

- Total GDP contribution from 2014 – 2048 = HK\$18 billion

## 財政預測 FINANCIAL PROJECTIONS

- 總建築成本: 港幣22億9千萬(2014年之估價)

- Total construction cost: HK\$2.29 billion (at 2014 price levels)

- 香港海洋公園將打造成多元化國際景點

- Ocean Park to be transformed into a multiple-venue destination

- 水上樂園將獨立收費

- Separate admission for the Water Park

- 推出入場套票，讓遊人可進入一個或兩個樂園

- A combination pricing package will be developed to allow guests to gain access to one or both parts of the Park

- 套票詳情將根據水上樂園開幕時之經濟環境及市場因素而釐訂

- Final package details to be confirmed subject to economic feasibility and prevailing market conditions closer to the opening of the water park

- 海洋公園之社區優惠將伸延至水上樂園 (如香港市民生日可免費入場、殘障人士可享特惠票價等)

- Extend current Ocean Park CSR practices to Water World (e.g. Free entries for birthdays, disabled discounts, etc.)





# It's Time table





# It's Time

