



## 南港島綫 (東段)

南區區議會

## South Island Line (East)

Southern District Council

17-01-2013

## 南區區議會 Southern District Council

### 議程 Agenda

1. 建造工程進度  
Works Progress
2. 臨時交通管理措施  
Temporary Traffic Management Scheme
3. 車站及社區設施  
Station and Community Facilities
4. 爆破工程  
Blasting Works
5. 社區聯絡  
Community Liaison

# 1. 建造工程進度 Works Progress

## 建造工程進度 Works Progress

工地範圍 Works Area:



## 工程進度 Progress Achieved

地區 Location	工程進展 Progress
<b>金鐘段</b> Admiralty	<ul style="list-style-type: none"> <li>• 夏慤花園工地的豎井爆破工程已於2012年11月展開。路面交通及列車服務不受影響。</li> <li>• 香港公園旁的通風設施工地現時正進行機械挖掘、圍板建造及密封式爆破隔音設施工程。預計於2013年第一季進行豎井爆破工程。</li> <li>• Blasting work at the Harcourt Garden site for the Admiralty expansion work started in November 2012. No impact on road traffic and train service.</li> <li>• Mechanical breaking, hoarding setup, and the construction of an acoustic blast cover are on-going at the ventilation facility construction site near Hong Kong Park. The shaft blasting at the site is expected to commence in the first quarter of 2013.</li> </ul>
<b>南風道隧道入口</b> Nam Fung Tunnel Portal	<ul style="list-style-type: none"> <li>• 隧道爆破工程已於2012年8月展開。高架隧道結構的建造工程正在進行。</li> <li>• Tunnel blasting commenced in August 2012. Construction of the superstructure of the elevated tunnel is in progress.</li> </ul>
<b>海洋公園段</b> Ocean Park	<ul style="list-style-type: none"> <li>• 香港仔隧道入口至海洋公園一段高架橋預製組件的吊裝工程已於2012年11月完成。隔音屏障基座及鋼鐵支架工程將展開。</li> <li>• 海洋公園站現正進行大堂結構工程及接駁至公園的行人天橋橋面建造工程。近警察學院正進行高架橋橋墩結構及明渠工程。</li> <li>• The viaduct segment erection works for the section from Aberdeen Tunnel entrance to Ocean Park was completed in November 2012. Construction of the noise barrier plinth and steel arch will follow.</li> <li>• Construction of the Ocean Park Station concourse structure and the bridge deck of the footbridge connecting to the Park are in progress. Viaduct pier construction and nullah modification works are ongoing adjacent to the Police College.</li> </ul>

## 工程進度 Progress Achieved

地區 Location	工程進展 Progress
<b>黃竹坑段</b> Wong Chuk Hang	<ul style="list-style-type: none"> <li>• 黃竹坑車廠、車站的大堂及月台結構工程正在進行。位於香葉道與業發街交界處正進行A出口的地基工程。近聖神修院斜坡的高架橋預製組件吊裝工程於2012年11月已開展。</li> <li>• 在香港仔海傍正興建香港仔海峽一段高架橋。</li> <li>• Construction of the depot structure in Wong Chuk Hang and the Station concourse and platform is in progress. Foundation work of the Entrance A at the junctions between Heung Yip Road and Yip Fat Street is in progress. The viaduct segment erection works near the slope adjacent to the Holy Spirit Seminary commenced in November 2012.</li> <li>• Construction of the viaduct section across Aberdeen Channel is in progress at the Aberdeen Praya.</li> </ul>
<b>利東段</b> Lei Tung	<ul style="list-style-type: none"> <li>• 海面傳道會小學舊址現正進行臨時管樁及隧道結構明挖回填工程。</li> <li>• 利東邨原來巴士總站的位置正進行利東站B出口相關的臨時管樁工程及地下管綫改道工程。利東B出口的豎井爆破工程, 預計於2013年上半年開始</li> <li>• 鴨脷洲大街利東站A出口的工地正進行臨時管樁及挖掘工程</li> <li>• 鴨脷洲隧道的爆破工程已經分別向海怡半島站和利東站開展。密封式泥石輸送帶正在運作</li> <li>• Cut-and-cover tunnel box structure construction is in progress at the ex-Harbour Mission School Site.</li> <li>• Temporary pipe-piling installation and the associated utility diversion works for Lei Tung Station Entrance B at the location of the existing bus terminus are in progress. Upcoming shaft blasting in Entrance B is expected to start in the first half of 2013.</li> <li>• The excavation works with installation of temporary pipe-piling at Entrance A of Lei Tung Station at Main Street, Ap Lei Chau are in progress.</li> <li>• The blasting of Ap Lei Chau main tunnel blasting is progressing towards South Horizon Station and Lei Tung Station concurrently. The fully-enclosed conveyor belt system is in operation.</li> </ul>

## 工程進度 Progress Achieved

地區 Location	工程進展 Progress
海怡半島段 South Horizons	<ul style="list-style-type: none"> <li>在海怡半島25座和23A座對出的怡南路的臨時馬路鋼板工程完成，挖掘及管綫工程繼續。在怡南路Y-字路口的位位置及海怡半島19座和20座對出正分別進行臨時樁柱及馬路鋼板安裝工程。上述工程預計於2013年第三季完成。</li> <li>海怡路路底及B出口位置正分別進行管綫遷移及地基工程。在玉桂山和利南道的水管遷移工程預計於2013年第一季完成。</li> <li>通風及機房大樓明山爆破工程已於2012年八月展開，斜坡鞏固工程預計於2013年下半年完成。</li> <li>Temporary road-deck installation along the section of Lee Nam Road and Yi Nam Road near South Horizons Blocks 23A and 25 was completed while excavation and utility works continue. Piling work near the Yi Nam Road Y-junction and the temporary road-deck installation near Blocks 19 and 20 is in progress. The above works are expected to be completed in the third quarter of 2013.</li> <li>Utility work under South Horizons Drive and the foundation work for Entrance B are in progress. Diversion of the water mains at Yuk Kwai Shan and Lee Nam Road is expected to be completed in the first quarter of 2013.</li> <li>The first open blast for the ventilation and plant building at Yuk Kwai Shan commenced in August 2012. Slope stabilization works is expected to be completed in the second half of 2013.</li> </ul>

## 金鐘段 Admiralty

### 車站結構工程及豎井挖掘工程 Station structure construction and Shaft Excavation Works





## 金鐘段(香港公園) Admiralty (Hong Kong Park)

豎井挖掘工程, 建造康樂文化事務署設施及地下管綫工程

Shaft Excavation, LCSD Facilities and Underground Utilities Construction Works



MTR Corporation

2013/1/16

Page 9



## 南風道工地 Nam Fung Road Work Site

工地平整, 橋墩及隧道地面結構建造工程

Site Formation, Pier and Elevated Tunnel Superstructure Works



MTR Corporation

2013/1/16

Page 10



## 南風隧道 Nam Fung Tunnel

隧道挖掘工程 Tunnel Blasting Works



MTR Corporation

2013/1/16

Page 11



## 香港仔隧道入口 Aberdeen Tunnel Entrance

高架橋預製組件吊裝工程 Viaduct Segment Erection Works



MTR Corporation

2013/1/16

Page 12





## 海洋公園段 Ocean Park

海洋公園站結構建造工程 Ocean Park Station Structure Construction Works



MTR Corporation

2013/1/16

Page 13



## 海洋公園段 Ocean Park

警校道附近的明渠工程 Nullah Works near Police School Road



MTR Corporation

2013/1/16

Page 14



## 黃竹坑段 Wong Chuk Hang

黃竹坑站結構建造工程 Wong Chuk Hang Station Structure Construction Works



## 黃竹坑段 Wong Chuk Hang

高架橋預製組件吊裝工程 Viaduct Segment Erection Works





## 黃竹坑段 Wong Chuk Hang

黃竹坑車廠建造工程 Wong Chuk Hang Depot Superstructure Works



MTR Corporation

2013/1/16

Page 17



## 香港仔海峽 Aberdeen Channel

興建香港仔海峽一段高架橋 Construction of the Viaduct section across Aberdeen Channel



MTR Corporation

2013/1/16

Page 18



## 利東段 Lei Tung

### 臨時管樁及明挖回填隧道建造工程

Temporary Pipe-piling Works and Cut and Cover Tunnel Construction works



MTR Corporation

2013/1/16

Page 19



## 利東段 Lei Tung

### 利東站A出口 Entrance A of Lei Tung Station



MTR Corporation

2013/1/16

Page 20





## 利東段 Lei Tung

### 利東站B出口臨時管樁及地下管綫改道工程

Temporary Pipe-piling Works and Associated Utilities Diversion Works for Entrance B of Lei Tung Station



MTR Corporation

2013/1/16

Page 21



## 海怡半島段 South Horizons

### 管樁安裝工程 Pipe piling works



MTR Corporation

2013/1/16

Page 22





## 海怡半島段 South Horizons

馬路鋼板安裝，水管遷移，通風及機房大樓爆破工程

Installation of Temporary Traffic Deck, Water Mains Diversion Works and open Blasting for the ventilation and plant building



MTR Corporation

2013/1/16

Page 23



## 海怡半島段 South Horizons

明山爆破工程 Open blast for South Horizon End Plant Building



MTR Corporation

2013/1/16

Page 24



## 鴨脷洲隧道 Ap Lei Chau Tunnel

隧道爆破工程 Tunnel Blasting Works



MTR Corporation

2013/1/16

Page 25



## 2. 臨時交通管理措施 Temporary Traffic Management Scheme

MTR Corporation

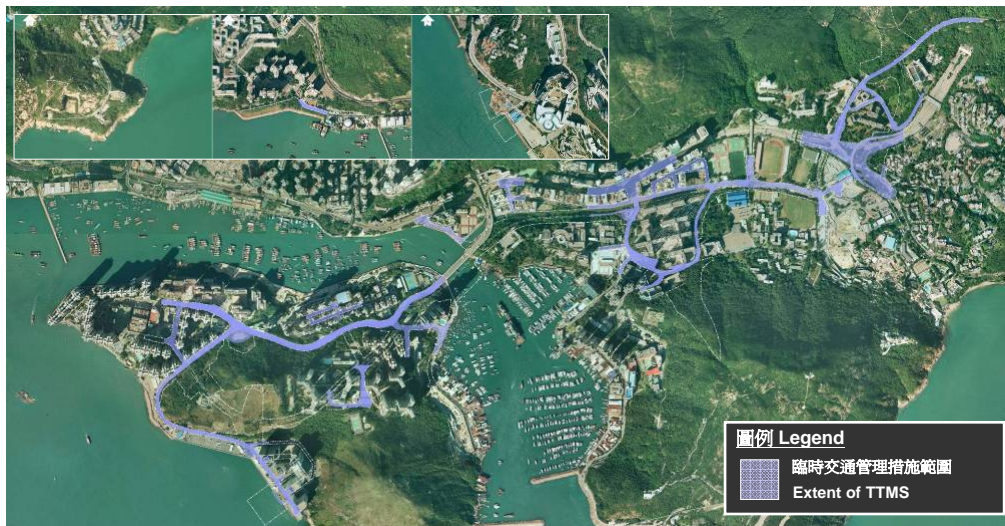
2013/1/16

Page 26



## 臨時交通管理措施 Temporary Traffic Management Scheme

臨時交通管理措施範圍如下 The extent of Temporary Traffic Management (TTMS):



MTR Corporation

2013/1/16

Page 27



## 臨時交通管理措施 Temporary Traffic Management Scheme

相關路段 Concerned Roads	預計安排 Proposed Arrangements	現時進度 Status
近香港仔隧道入口 Near Aberdeen Tunnel entrance	鄰近香港仔隧道入口的黃竹坑道路段，將繼續於2013年第一季半年夜間時段間歇實施臨時交通管理措施，以進行高架橋夜間工程。 TTMS at Wong Chuk Hang Road in the vicinity of Aberdeen Tunnel entrance will continue to be implemented until the first quarter of 2013 at night for viaduct construction.	已實施 Implemented
海洋公園道 Ocean Park Road	部分海洋公園道與海洋公園入口之間的私家路段，將繼續分段暫時封閉。 Temporary closure of the sections of private road between Ocean Park Road and the entrance of the Ocean Park will continue to be implemented in stages.	已實施 Implemented
南朗山道 Nam Long School Road	香葉道及南朗山道交界的南朗山道已於今年10月暫時向東遷移，此安排將維持至2013年。 A section of Nam Long Shan Road near its junction with Heung Yip Road had been temporarily shifted eastward since October 2012 and this arrangement will last until 2013.	已實施 Implemented
警校道 Police School Road	警校道及香葉道交界的一段警校道已於今年10月暫時向東遷移，此安排將維持至2013年。 A section of Police School Road near its junction with Heung Yip Road had been temporarily shifted eastward since October 2012 and this arrangement will last until 2013.	已實施 Implemented

MTR Corporation

2013/1/16

Page 28





## 臨時交通管理措施 Temporary Traffic Management Scheme

相關路段 Concerned Roads	預計安排 Proposed Arrangements	現時進度 Status
鴨脷洲徑  Ap Lei Chau Drive	由2012年6月開始，鴨脷洲橋道及鴨脷洲徑交界之路口已臨時改道至前海面傳道會小學舊址。相應路口亦已安裝設有交通燈號的行人過路設施。  The junction of Apleichau Bridge Road and Ap Lei Chau Drive is diverted temporarily towards the site of the former Harbour Mission School since June 2012. Signalized controlled pedestrian crossing facilities have also been in place to cope with the changes in TTMS to ensure safety.	已實施  Implemented
利東邨道  Lei Tung Estate Road	部分現有巴士總站已遷移至位於利東邨東興樓對出的新巴士總站。毗鄰利東商場一期部份行人道的臨時交通管理措施，將繼續分階段實施。因應利東站B出口的豎井爆破工程，預計在2013年上半內，在部份利東邨道開始短暫封路。  With the re the new bus terminus, part of the existing bus terminus and sections of footpath adjacent to Lei Tung Commercial Centre (Phase 1) are temporarily closed in stages for the construction of the station entrance and associated works. Temporary road closure at Lei Tung Estate Road for shaft blasting at Entrance B is expected to commence in the first half of 2013.	已實施  Implemented

## 臨時交通管理措施 Temporary Traffic Management Scheme

相關路段 Concerned Roads	預計安排 Proposed Arrangements	現時進度 Status
利南道、怡南路及海怡路  Lee Nam Road, Yi Nam Road & South Horizons Drive	臨時交通安排繼續分階段於利南道、怡南路和海怡路實施。巴士總站仍正常運作。部分巴士和專線小巴的行車路線需作出更改。工程期間提供臨時行人路和過路設施。  在玉桂山的明山爆破工程進行期間，部分利南道須短暫封路直至2013年下半年。其中一條由利南路往怡南路的西行綫將於2013年第一季重開。  TTMS is being implemented along Lee Nam Road, Yi Nam Road and South Horizons Drive. Bus terminus operation will be maintained with some of the bus and GMB routes adjusted. Pedestrian crossings and footpaths are maintained.  Temporary road closure at Lee Nam Road for open blasting at Yuk Kwai Shan has been implemented until the second half of 2013. One of the west-bound traffic lane from Lee Nam Road to Yi Nam Road is expected to be reopened in the first quarter of 2013.	已實施  Implemented

### 3. 車站及社區設施 Station and Community Facilities

#### 黃竹坑車站下之公共交通交匯處及明渠修改工程 WCH Station PTI and Modification of existing Nullah



## 連接黃竹坑車站觀海徑至南朗山道的行人通道 Pedestrian link connecting WCH Station and Kwun Hoi path



## 利東站 Lei Tung Station

出入口“A”：一部升降機 - 每架載客量為13人  
Entrance “A” : One Lift - 13 Persons



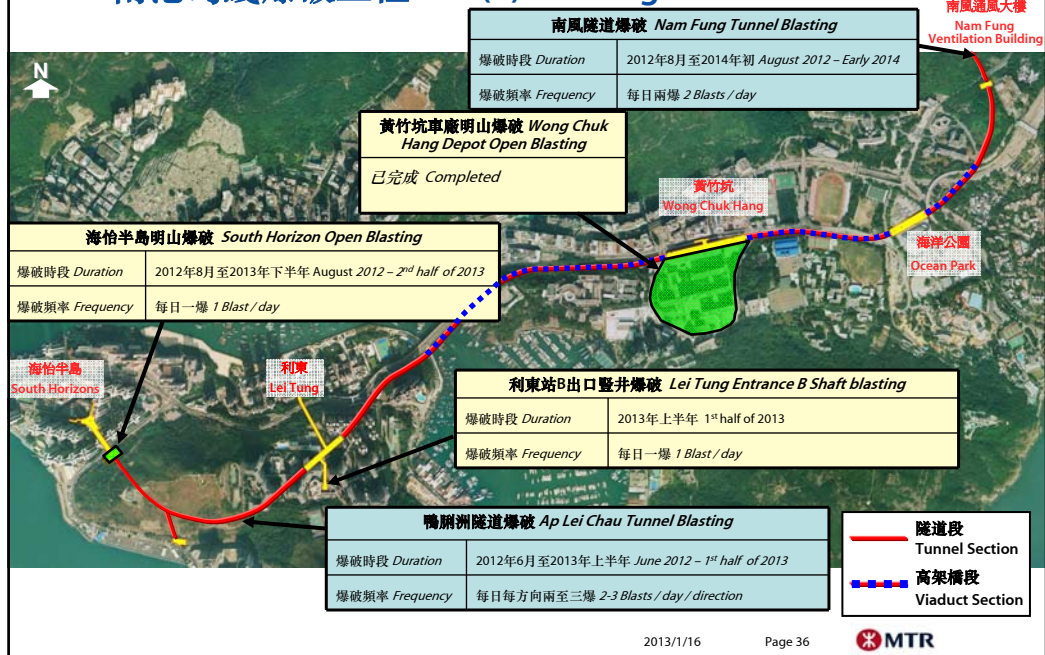
出入口“B”：四部升降機 - 每架載客量為28人  
Entrance “B” : Four Lifts - 28 Persons each





## 4. 爆破工程 Blasting Works

### 南港島綫爆破工程 SIL(E) Blasting works



## 5. 社區聯絡 Community Liaison

### 第八次南港島綫(東段)社區聯絡小組會議

#### The seventh round of Community Liaison Group (CLG) meetings

- 第八次社區聯絡小組亦已於2012年第四季舉行，有關資料已上載南港島綫(東段)網頁。第九次的小組會議亦將於2013年2月份舉行。  
<http://www.mtr-southislandline.hk/tc/public-consultation/community-liaison-group.html>
- The eighth round of Community Liaison Group (CLG) meetings was held in the fourth quarter of 2012. Relevant information had been made available for the public at the SIL(E) website. The ninth round of CLG meetings will be arranged in February 2013.  
<http://www.mtr-southislandline.hk/en/public-consultation/community-liaison-group.html>



## 2012年聖誕節義工探訪活動 Volunteer Visit in Christmas 2012

香港小童群益會賽馬會海怡青少年綜合服務中心鴨脷洲分處  
The Boy's & Girl's Club Association of HK – Jockey Club South Horizons Children and Youth Integrated Services Centre – Ap Lei Chau Sub-office



MTR Corporation

2013/1/16

Page 39



謝謝  
Thank You

MTR Corporation

2013/1/16

Page 40

