

# 南港島綫 (東段)

南區區議會

## South Island Line (East)

Southern District Council

**14-03-2013**

### 南區區議會 Southern District Council

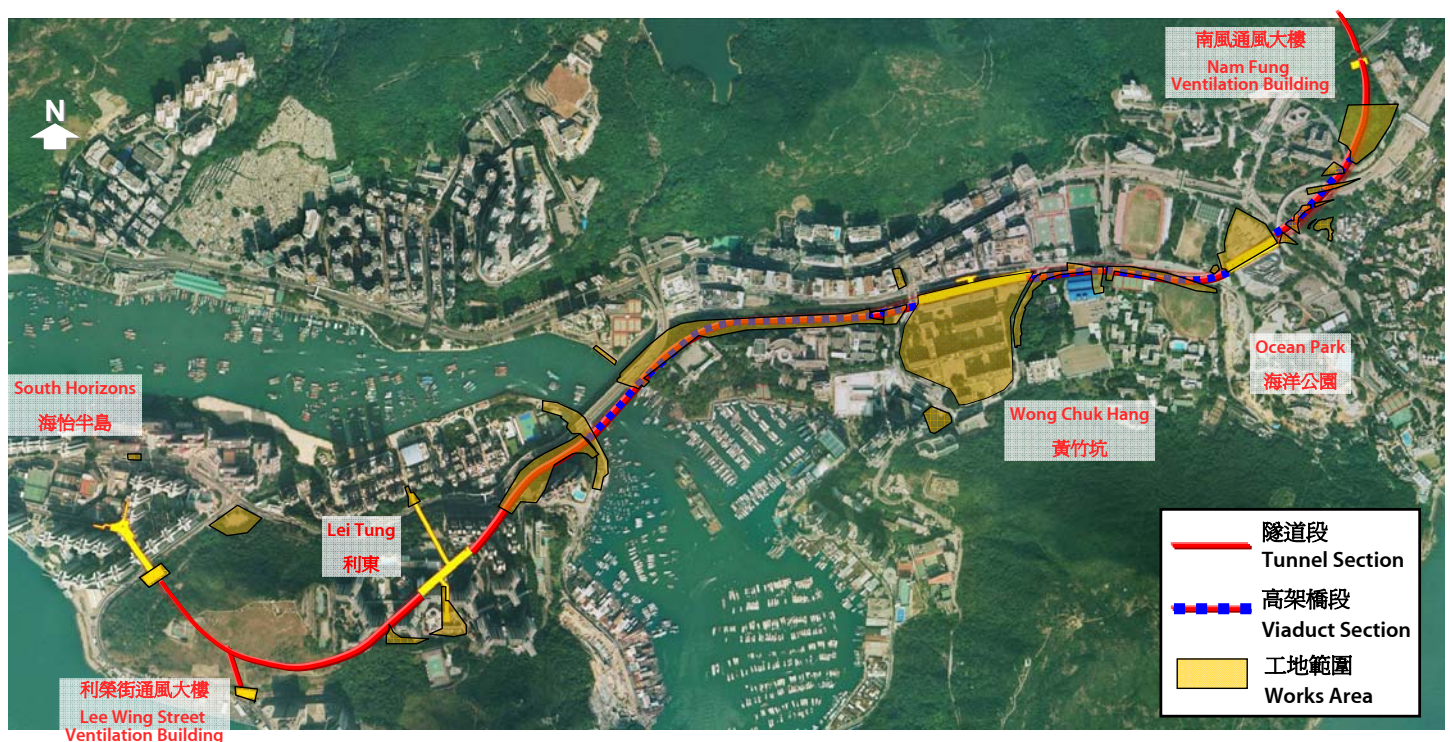
#### 議程 Agenda

1. 建造工程進度  
Works Progress
2. 臨時交通管理措施  
Temporary Traffic Management Scheme
3. 爆破工程  
Blasting Works
4. 社區聯絡  
Community Liaison

# 1. 建造工程進度 Works Progress

## 建造工程進度 Works Progress

工地範圍 Works Area:



## 工程進度 Progress Achieved

地區 Location	工程進展 Progress
金鐘段 Admiralty	<ul style="list-style-type: none"> <li>夏慤花園工地的豎井爆破工程已於2012年11月展開。路面交通及列車服務不受影響。</li> <li>香港公園旁的通風設施工地，機械挖掘工程及密封爆破隔音設施工程接近完成。豎井及隧道爆破工程將於2013年第一季進行，預計維持至2014年。</li> <li>Blasting work at the Harcourt Garden site for the Admiralty expansion work started in November 2012. No impact on road traffic and train service.</li> <li>Mechanical breaking and the acoustic blast cover construction at the Hong Kong Park work site for the construction of the ventilation facility is almost completed. Blasting work for the shaft and tunnel is expected to commence in the first quarter of 2013 for scheduled completion in 2014.</li> </ul>
南風道隧道入口 Nam Fung Tunnel Portal	<ul style="list-style-type: none"> <li>隧道爆破工程已於2012年8月展開。高架隧道結構的建造工程正在進行。</li> <li>Tunnel blasting commenced in August 2012. Construction of the superstructure of the elevated tunnel is in progress.</li> </ul>
海洋公園段 Ocean Park	<ul style="list-style-type: none"> <li>香港仔隧道入口至海洋公園一段高架橋預製組件的吊裝工程已於2012年11月完成。整體高架橋工程完成逾三成。</li> <li>海洋公園站現正進行大堂結構工程及接駁至公園的行人天橋橋面建造工程。近警察學院正進行高架橋橋躉結構工程。</li> <li>The viaduct segment erection works for the section from Aberdeen Tunnel entrance to Ocean Park was completed in November 2012. More than 30% of the viaduct construction works completed.</li> <li>Construction of the Ocean Park Station concourse structure and the bridge deck of the footbridge connecting to the Park are in progress. Viaduct pier construction works are ongoing adjacent to the Police College.</li> </ul>

## 工程進度 Progress Achieved

地區 Location	工程進展 Progress
黃竹坑段 Wong Chuk Hang	<ul style="list-style-type: none"> <li>黃竹坑車廠及車站結構工程正在進行。位於香葉道與業發街交界處正進行A出口的地基工程。</li> <li>明渠旱季工程由香港警察學院對出一直沿海洋公園道及香葉道進行，管綫改動工程亦正在南朗山道進行。</li> <li>近聖神修院斜坡與香港仔海峽一段高架橋的建造工程正同時進行。</li> <li>Superstructure works for the depot and station in Wong Chuk Hang is in progress. Foundation work of the Entrance A at the junctions between Heung Yip Road and Yip Fat Street is in progress.</li> <li>The dry-season nullah modification works are progressing from the Hong Kong Police College along Ocean Park Road and Heung Yip Road. Utility diversion works are being carried out along Nam Long Shan Road.</li> <li>Construction work for the viaduct sections near the slope adjacent to Holy Spirit Seminary and across the Aberdeen Channel is in progress.</li> </ul>

## 工程進度 Progress Achieved

地區 Location	工程進展 Progress
利東段 Lei Tung	<ul style="list-style-type: none"> <li>海面傳道會小學舊址現正進行臨時管樁及隧道結構明挖回填工程。</li> <li>利東邨原來巴士總站的位置正進行利東站B出口相關的臨時管樁工程及地下管綫改道工程。利東B出口的豎井爆破工程,預計於2013年上半年開始。</li> <li>鴨脷洲大街利東站A出口的工地已於2013年2月份開展行人隧道挖掘工程。</li> <li>鴨脷洲隧道的爆破工程已經分別向海怡半島站和利東站開推展,其中向往利東方向的工程已大致完成。利東站的爆破工程將於2013年2月開展。</li> <li>Cut-and-cover tunnel box structure construction is in progress at the former-Harbour Mission School Site.</li> <li>Temporary pipe-piling installation and the associated utility diversion works for Lei Tung Station Entrance B at the location of the existing bus terminus are in progress. Upcoming shaft blasting for Entrance B is expected to start in the first half of 2013.</li> <li>The excavation works for a pedestrian adit at Lei Tung Station Entrance A at Main Street, Ap Lei Chau commenced in February 2013.</li> <li>The blasting of Ap Lei Chau main tunnel is progressing towards South Horizon Station and Lei Tung Station concurrently. The blasting of Ap Lei Chau main tunnel in Lei Tung direction have been substantially completed. The blasting of Lei Tung Station is commencing in February 2013.</li> </ul>

## 工程進度 Progress Achieved

地區 Location	工程進展 Progress
海怡半島段 South Horizons	<ul style="list-style-type: none"> <li>在海怡半島25座和23A座對出的怡南路的臨時馬路鋼板工程完成,挖掘及管綫工程繼續。在海怡半島19座和20座對出的臨時樁柱及馬路鋼板安裝工程亦已完成,而第33A座對出的臨時樁柱安裝工程則預計於2013年第三季完成。</li> <li>部分利南道和怡南道交界的路口已於2013年二月重新開放。</li> <li>海怡路路底正進行管綫遷移及B出口地基工程。在玉桂山的水管遷移工程已經完成,而利南道的水管遷移工程繼續進行並預計於2013年第一季完成。</li> <li>連接鴨脷洲村和海怡半島怡南道之行人天橋正進行管綫遷移及地基工程,預計於2013年第二季完成。</li> <li>位於玉桂山的通風及機房大樓工地平整工程繼續進行,永久斜坡鞏固工程預計於2013年下半年完成。</li> <li>Temporary road-deck installation along the section of Lee Nam Road and Yi Nam Road near South Horizons Blocks 23A and 25 was completed while excavation and utility works continue. The temporary road-deck installation near Blocks 19 and 20 was completed. Piling works near Block 33A is expected to be completed in the third quarter of 2013.</li> <li>Section of the junction of Lee Nam Road and Yi Nam Road has been reopened in February 2013.</li> <li>Utility works under South Horizon Drive and the foundation work for Entrance B were in progress. Diversion of the water mains at Yuk Kwai Shan was completed, while the remaining diversion works at Lee Nam Road is expected to be completed in the first quarter of 2013.</li> <li>The utility diversion and foundation works of the footbridge connecting the Ap Lei Chau Estate and Yi Nam Road is in progress and is expected to be completed in the second quarter of 2013.</li> <li>The site formation for the ventilation and plant building at Yuk Kwai Shan is in progress. Permanent slope stabilization works is expected to be completed in the second half of 2013.</li> </ul>



## 金鐘段 Admiralty

車站結構工程及豎井挖掘工程

Station structure construction and Shaft Excavation Works



MTR Corporation

2013/2/21

Page 9



## 金鐘段(香港公園) Admiralty (Hong Kong Park)

豎井挖掘工程, 建造康樂文化事務署設施及地下管綫工程

Shaft Excavation, LCSD Facilities and Underground Utilities Construction Works



MTR Corporation

2013/2/21

Page 10





# 南風道工地 Nam Fung Road Work Site

工地平整, 橋墩及隧道地面結構建造工程

Site Formation, Pier and Elevated Tunnel Superstructure Works



MTR Corporation

2013/2/21

Page 11



# 南風隧道 Nam Fung Tunnel

隧道挖掘工程 Tunnel Blasting Works



MTR Corporation

2013/2/21

Page 12





## 香港仔隧道入口 Aberdeen Tunnel Entrance

此段高架橋預製組件吊裝工程已完成

Precast Segmental Construction for this section of Viaduct Completed



MTR Corporation

2013/2/21

Page 13



## 海洋公園段 Ocean Park

海洋公園站結構建造工程 Ocean Park Station Structure Construction Works



MTR Corporation

2013/2/21

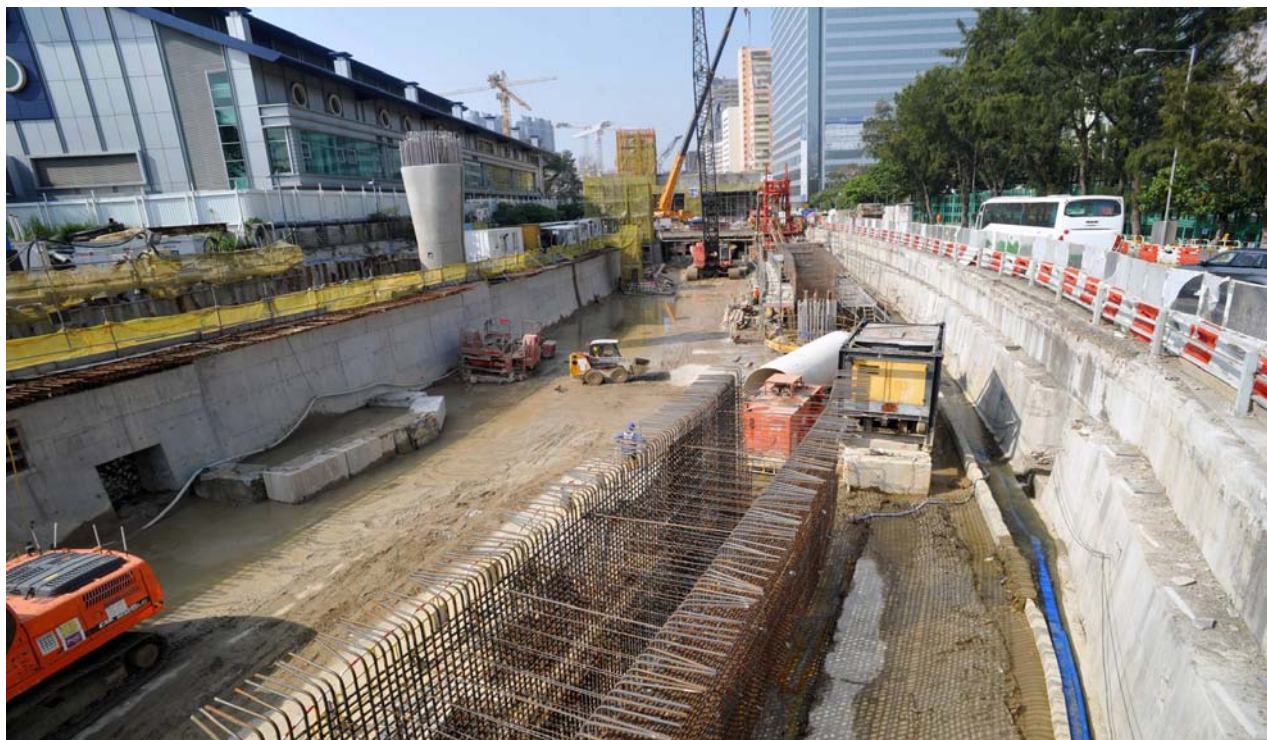
Page 14





## 海洋公園段 Ocean Park

警校道附近的明渠工程 Nullah Works near Police School Road



## 黃竹坑段 Wong Chuk Hang

黃竹坑站結構建造工程 Wong Chuk Hang Station Structure Construction Works





## 黃竹坑段 Wong Chuk Hang

### 高架橋預製組件吊裝工程 Viaduct Segment Erection Works



MTR Corporation

2013/2/21

Page 17



## 黃竹坑段 Wong Chuk Hang

### 黃竹坑車廠建造工程 Wong Chuk Hang Depot Superstructure Works



MTR Corporation

2013/2/21

Page 18





## 香港仔海峽 Aberdeen Channel

興建香港仔海峽一段高架橋

Construction of the Viaduct section across Aberdeen Channel



MTR Corporation

2013/2/21

Page 19



## 利東段 Lei Tung

臨時管樁及明挖回填隧道建造工程

Temporary Pipe-piling Works and Cut and Cover Tunnel Construction works



MTR Corporation

2013/2/21

Page 20





## 利東段 Lei Tung

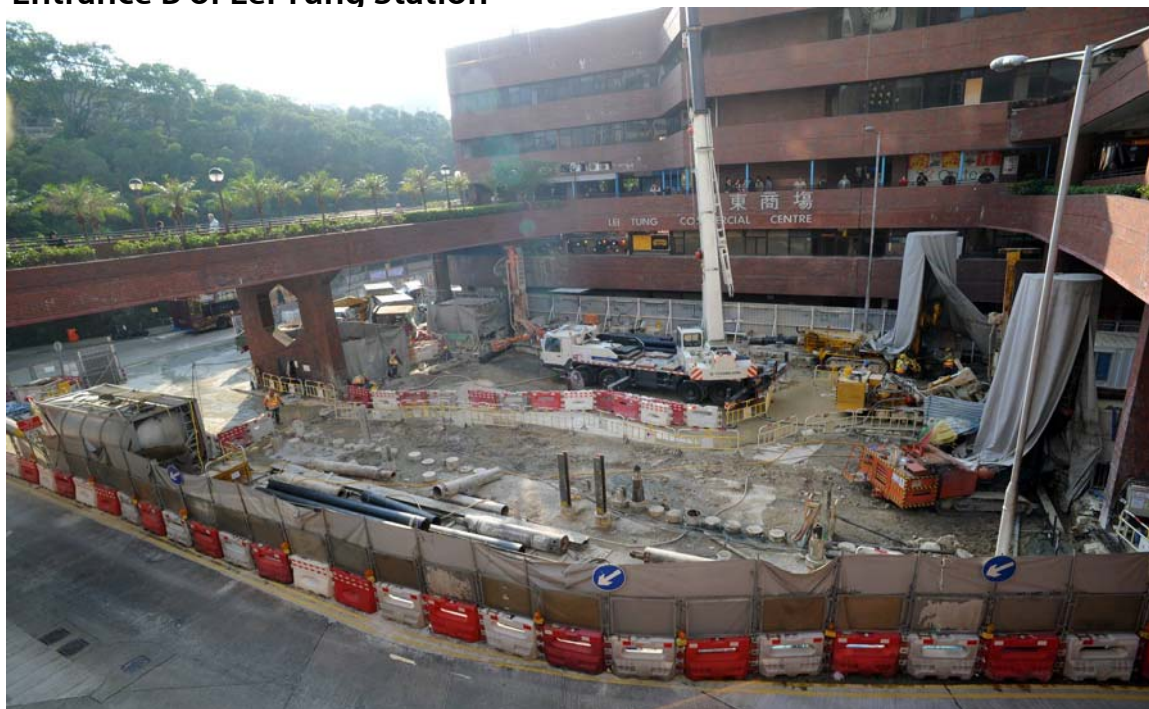
### 利東站A出口 Entrance A of Lei Tung Station



## 利東段 Lei Tung

### 利東站B出口臨時管樁及地下管綫改道工程

### Temporary Pipe-piling Works and Associated Utilities Diversion Works for Entrance B of Lei Tung Station





## 海怡半島段 South Horizons

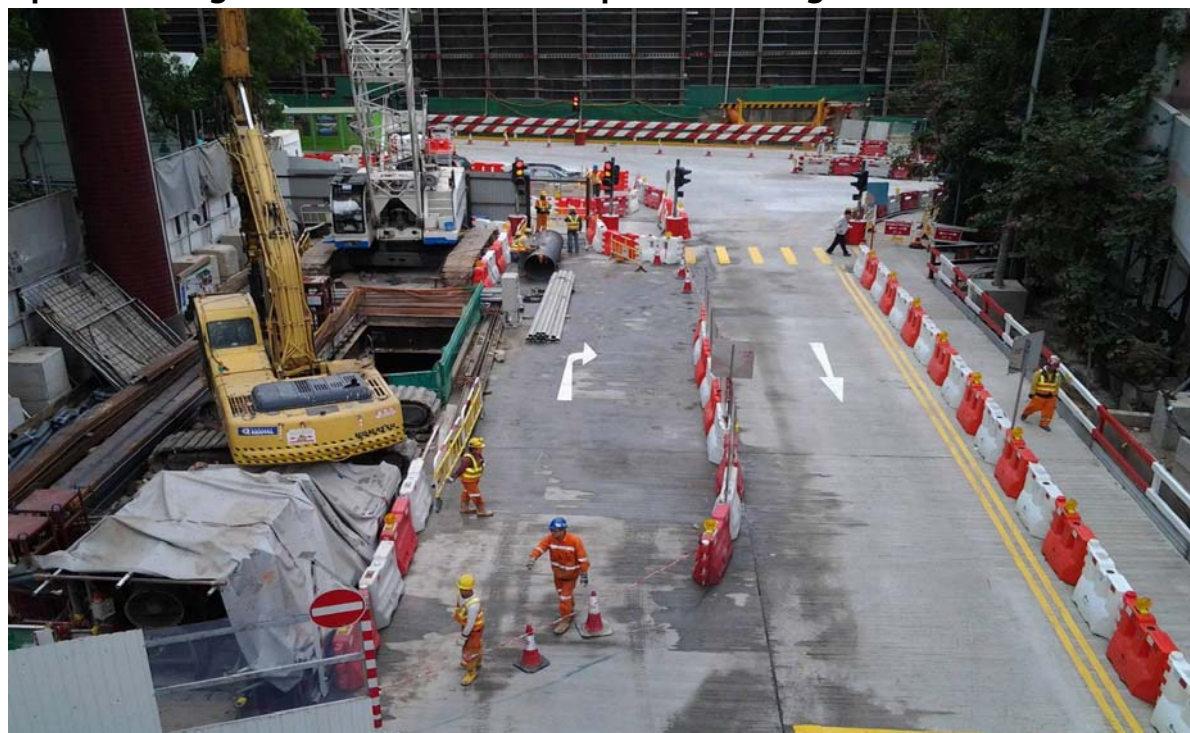
### 管樁安裝工程 Pipe piling works



## 海怡半島段 South Horizons

### 馬路鋼板安裝，水管遷移，通風及機房大樓爆破工程

### Installation of Temporary Traffic Deck, Water Mains Diversion Works and open Blasting for the ventilation and plant building





## 海怡半島段 South Horizons

明山爆破工程 Open blast for South Horizon End Plant Building



MTR Corporation

2013/2/21

Page 25



## 鴨脷洲隧道 Ap Lei Chau Tunnel

隧道爆破工程 Tunnel Blasting Works



MTR Corporation

2013/2/21

Page 26

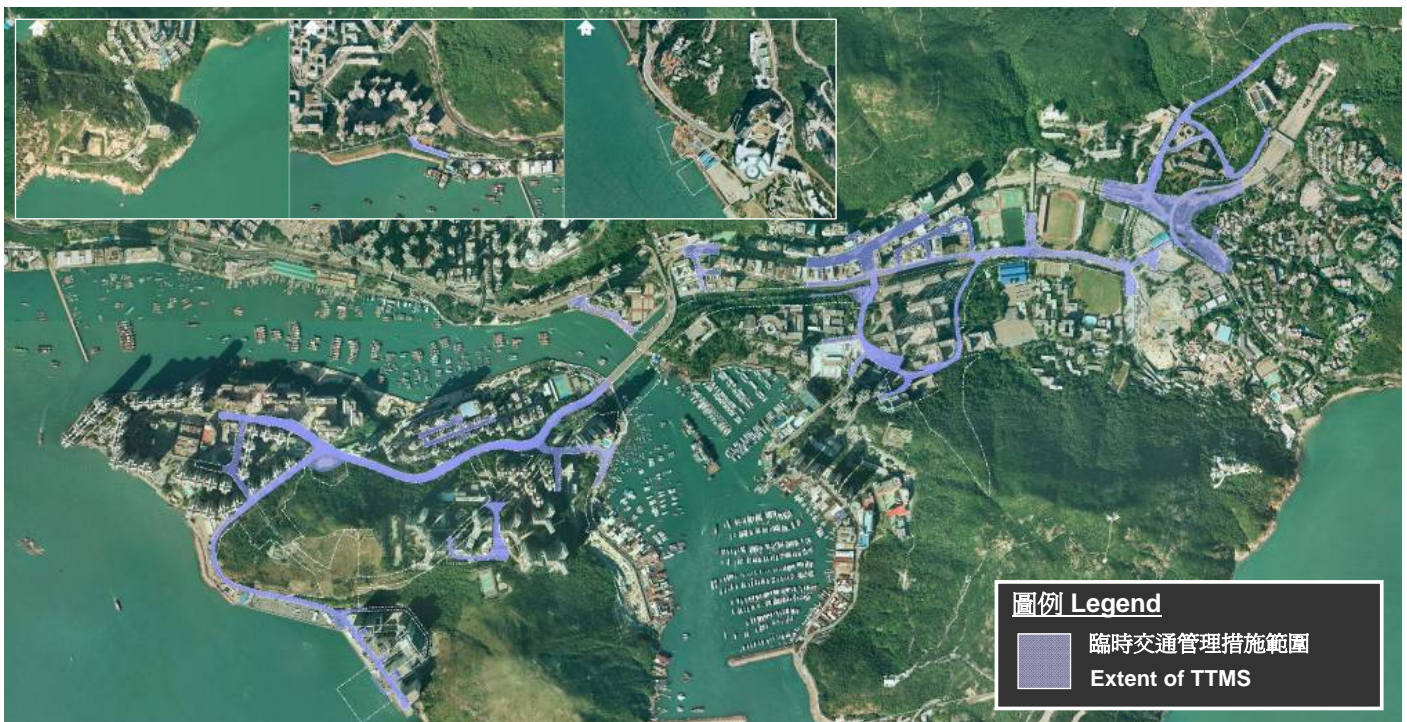




## 2. 臨時交通管理措施 Temporary Traffic Management Scheme

### 臨時交通管理措施 Temporary Traffic Management Scheme

臨時交通管理措施範圍如下 The extent of Temporary Traffic Management (TTMS):





## 臨時交通管理措施 Temporary Traffic Management Scheme

相關路段 Concerned Roads	預計安排 Proposed Arrangements	現時進度 Status
香港仔隧道收費廣場 Aberdeen Tunnel Toll Plaza	<ul style="list-style-type: none"> <li>鄰近香港仔隧道收費廣場的黃竹坑道路段，將繼續於2013年上半年夜間時段維持間歇性改道為雙線雙程行車，以進行隔音屏障安裝工程。</li> <li>由香港仔隧道往壽臣山的連接路及往香港仔隧道的黃竹坑道天橋的連接路，將於2013年上半年繼續分階段在夜間時段間歇性實施臨時封路措施。</li> <li>Dual two-lane traffic at Wong Chuk Hang Road in the vicinity of Aberdeen Tunnel Toll Plaza will continue to implement intermittently at night-time for noise barriers installation works during the first half of 2013.</li> <li>Temporary and intermittent road closure at the slip roads leading from Aberdeen Tunnel to Shouson Hill and from Wong Chuk Hang Road flyover to Aberdeen Tunnel during night time will continue to be implemented in phases in the first half of 2013.</li> </ul>	已實施  Implemented
南風徑 Nam Fung Path	<ul style="list-style-type: none"> <li>南風徑近黃竹坑醫院的迴旋處已暫時停用直至2013年上半年，以進行隔音屏障安裝工程，期間南風徑將會維持雙線雙向行車。</li> <li>The roundabout at Nam Fung Path near Wong Chuk Hang Complex has been temporarily closed until March 2013 for installation works for noise barriers. Dual two-lane traffic will be maintained.</li> </ul>	已實施  Implemented

## 臨時交通管理措施 Temporary Traffic Management Scheme

相關路段 Concerned Roads	預計安排 Proposed Arrangements	現時進度 Status
南朗山道 Nam Long Shan Road	<ul style="list-style-type: none"> <li>警校道及香葉道交界的一段警校道、以及南朗山道及香葉道交界的一段南朗山道，已於2012年10月暫時改道，預計維持至2013年第三季。期間該行車線及行車方向並無改變，行人路將分段改道。</li> <li>鄰近南朗山道休憩處的部分南朗山道北行行車道會繼續於2013年上半年夜間暫時封閉。鄰近利達中心的一段由黃竹坑道往業勤街的行人通道，將繼續分階段暫時封閉，期間行人需暫時經由黃竹坑道與業勤街的交通處前往業勤街。</li> <li>Temporary diversion of a section of Police School Road at its junction with Heung Yip Road and a section of Nam Long Shan Road at its junction with Heung Yip Road in October 2012 is expected to be lasted until the third quarter of 2013. The number of carriageways and vehicular traffic will be maintained while the footpath will be diverted in stages.</li> <li>Part of the northbound carriageway adjacent to Nam Long Shan Road Sitting-out Area will continue to be temporarily closed at night time until the first half of 2013. The pedestrian access adjacent to Leader Centre leading from Wong Chuk Hang Road to Yip Kan Street is temporarily closed in phases. Pedestrian access to Yip Kan Street is temporarily diverted to the junction with Wong Chuk Hang Road.</li> </ul>	已實施  Implemented
警校道 Police School Road	<ul style="list-style-type: none"> <li>警校道部分路段將分階段於日間非學校上下課的繁忙時段改為單線行車。有關安排將由2013年第一季實施至2013年第二季。</li> <li>Section of the carriageway on Police School Road will be reduced to one-lane traffic in phases during the non-school peak hours from the first quarter of 2013 to the second quarter of 2013.</li> </ul>	2013年第一季  Q1 2013

## 臨時交通管理措施 Temporary Traffic Management Scheme

相關路段 Concerned Roads	預計安排 Proposed Arrangements	現時進度 Status
鴨脷洲徑 Ap Lei Chau Drive	<ul style="list-style-type: none"> <li>部份鴨脷洲徑路段正封閉。行人路及行車路將會維持，並在有需要時改道。鴨脷洲橋道及鴨脷洲徑交界之路口已於2012年6月作暫時改道，行人及車輛仍可照常通往鴨脷洲徑及利東邨道。此安排將一直實施至2014年。</li> <li>Partial road closure of Ap Lei Chau Drive is being implemented. Vehicular and pedestrian traffic will be maintained and diverted where necessary. The junction of Ap Lei Chau Bridge Road and Ap Lei Chau Drive has been diverted since June 2012. Vehicular and pedestrian access to Ap Lei Chau Drive and Lei Tung Estate Road are maintained. The above arrangement will last until 2014.</li> </ul>	已實施  Implemented
利東邨道 Lei Tung Estate Road	<ul style="list-style-type: none"> <li>利東商場一期對出的部份利東邨道已於2012年8月開始暫時改道，而部份原有巴士總站的候車處亦已遷移至新巴士總站。以上安排將維持至2014年上半年。</li> <li>Part of Lei Tung Estate Road adjacent to Phase 1 of the Centre has been temporarily diverted, part of the bus lanes at the existing bus terminus has been temporarily relocated to the new bus terminus starting from August 2012. The arrangement will last until the first half of 2014.</li> </ul>	已實施  Implemented
海怡半島 South Horizons	<ul style="list-style-type: none"> <li>怡南路和利南道交界的部分路口已於2013年2月重開。從鴨脷洲橋道至海怡東商場之間的一段怡南路，會繼續維持單線單程行車。</li> <li>Section of the junction of Lee Nam Road and Yi Nam Road has been reopened in Feb 2013. One-way one-lane traffic will continue to be implemented at the section of Yi Nam Road between Ap Lei Chau Bridge Road and Marina Square East Centre leading only to South Horizons Drive.</li> </ul>	已實施  Implemented



### 3. 爆破工程 Blasting Works



## 南港島綫爆破工程 SIL(E) Blasting works



2013/2/21

Page 33



## 4. 社區聯絡 Community Liaison





## 南區區議會參觀鴨脷洲隧道工地 Visit to Ap Lei Chau Tunnel by Southern District Council



## 第九次南港島綫(東段)社區聯絡小組會議 The ninth round of Community Liaison Group (CLG) meetings

- 第九次社區聯絡小組會議將於2013年2-3月舉行。相關資料將上載至南港島綫(東段)網頁。  
<http://www.mtr-southislandline.hk/tc/public-consultation/community-liaison-group.html>
- The ninth round of Community Liaison Group (CLG) meetings will be held in February and March 2013. Relevant information will be made available for the public at the SIL(E) website.  
<http://www.mtr-southislandline.hk/en/public-consultation/community-liaison-group.html>





謝謝  
Thank You