

南港島綫 (東段)

南區區議會

South Island Line (East)

Southern District Council

18-7-2013

南區區議會 Southern District Council

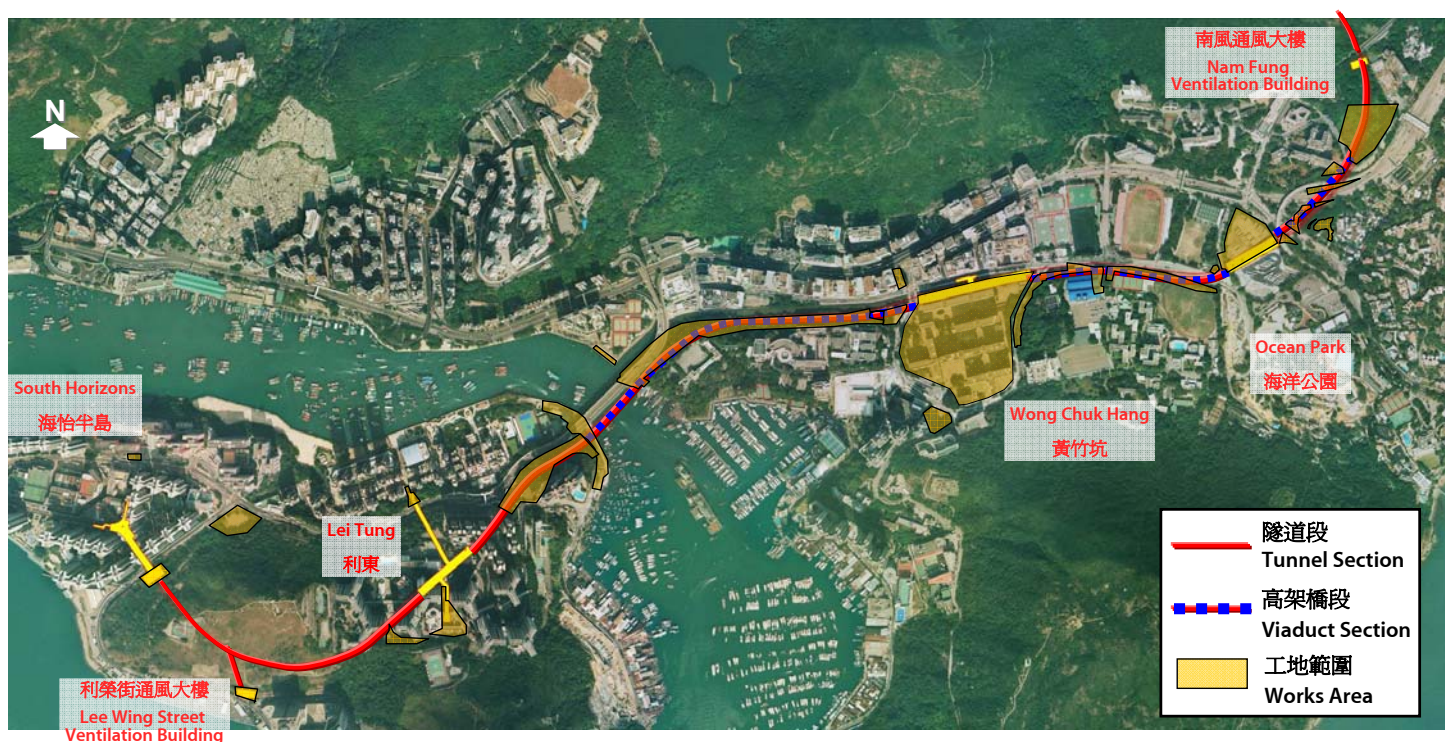
議程 Agenda

1. 建造工程進度
Works Progress
2. 臨時交通管理措施
Temporary Traffic Management Scheme
3. 附有寵物設施的公園設計
Design of Park with Pet Facilities
4. 爆破工程
Blasting Works
5. 社區聯絡
Community Liaison

1. 建造工程進度 Works Progress

建造工程進度 Works Progress

工地範圍 Works Area:



工程進度 Progress Achieved

地區 Location	工程進展 Progress
金鐘段 Admiralty	<ul style="list-style-type: none"> 夏慤花園工地現時正以明挖回填方式進行金鐘站擴建的挖掘和車站結構工程。豎井及隧道爆破工程繼續進行，預計於2014年年底完成。 在香港公園旁的通風設施工地，豎井及隧道爆破工程已於2013年3月開展，預計維持至2014年。 Cut-and-cover excavation and construction of station structures are progressing at the Harcourt Garden works site for Admiralty Station expansion. Blasting work for the shaft and tunnel is in progress with completion expected at the end of 2014. Blasting works for the shaft and tunnel next to the works site at Hong Kong Park commenced in March 2013 for completion scheduled in 2014.
南風道隧道入口 Nam Fung Tunnel Portal	<ul style="list-style-type: none"> 南風隧道爆破工程正在進行，預計於2014年第二季完成。高架隧道結構的建造工程正在進行，預計於2014年完成。 The tunnel blasting works for the Nam Fung section are in progress for completion expected in the second quarter of 2014. Construction of the superstructure of the elevated tunnel box is in progress and is expected to be completed in 2014.
海洋公園段 Ocean Park	<ul style="list-style-type: none"> 由近香港仔隧道至海洋公園站一段高架橋正進行隔音屏障裝置工程。 海洋公園站正進行車站結構建造工程，及接駁至海洋公園的行人天橋橋面建造工程已經完成。 The installation of noise barriers for the viaduct section near Aberdeen Tunnel leading to Ocean Park station is in progress. Structural works of Ocean Park Station are in progress and the bridge deck construction of the footbridge connecting to Ocean Park has been completed.

工程進度 Progress Achieved

地區 Location	工程進展 Progress
黃竹坑段 Wong Chuk Hang	<ul style="list-style-type: none"> 黃竹坑車站正進行月台層及機房層結構工程，而由香葉道至業發街之間的黃竹坑站A出口的地基工程已完成。車廠工地正進行地基、柱牆及天台樓面工程。 沿香港警察學院及南朗山道對出一段明渠正進行明渠改善工程，包括建造明渠內間牆、新明渠牆及新明渠平台。管綫改道工程亦繼續在南朗山道進行。 近聖神修院斜坡的高架橋段正在進行隔音屏障工程。橫跨香港仔海峽的一段高架橋縫接工程已經完成。 近大王爺廟附近的部分行人徑及近黃竹坑明渠的聖神修院附近的部分行人徑和樓梯會繼續暫時封閉，以進行高架橋建造工程。 Wong Chuk Hang Station is progressing with structural work being carried out at platform and plant room levels while foundation work was completed at Entrance A between Heung Yip Road and Yip Fat Street. Spread footing, column and roof construction works are progressing at the Depot site. Nullah modification works including construction of the internal and new nullah walls as well as the new nullah deck are progressing in the nullah alongside Hong Kong Police College and Nam Long Shan Road. Utility diversion works will continue to be carried out along Nam Long Shan Road. Noise barrier construction at the viaduct section near the slope adjacent to Holy Spirit Seminary is in progress. The mid span closure construction of bridge across Aberdeen Channel has been completed. Temporary closure of a section of a footpath near Tai Wong Ye Temple and a section of a footpath and staircase near Holy Spirit Seminary near Wong Chuk Hang Nullah will continue to be implemented for the viaduct construction

工程進度 Progress Achieved

地區 Location	工程進展 Progress
利東段 Lei Tung	<ul style="list-style-type: none"> 鴨脷洲橋道及鴨脷洲徑交界之路口已臨時改道至前海面傳道會小學舊址，原址現正進行隧道結構明挖回填及臨時支撐結構工程。 利東邨原來巴士總站的部分位置正進行利東站B出口的挖掘、臨時支撐及地下管綫改道工程。為配合預計於2013年第三季左右進行的利東站B出口豎井爆破工程，豎井上的爆破護面覆蓋已大致完成，現正建造密封式隔音罩。 鴨脷洲大街利東站A出口的臨時支撐及挖掘已完成，而車站行人隧道的挖掘工程正在進行。 鴨脷洲主隧道的爆破工程已經分別向海怡半島站和利東站推展。鴨脷洲主隧道至利東站的挖掘工程已大致完成。利東站的爆破工程已於2013年2月開展。 The junction of Ap Lei Chau Bridge Road and Ap Lei Chau Drive has been temporarily diverted towards the site of the former Harbour Mission School. Construction of the cut-and-cover tunnel box structure with excavation and installation of a temporary support system is being carried out at the location of the previous junction. Excavation and installation of a temporary support system for the construction of Lei Tung Station Entrance B, as well as associated utility diversion works at part of the original bus terminus are in progress. The blasting cover is substantially completed and the construction of a noise enclosure is in progress for the upcoming shaft blasting for the construction of Entrance B which is expected to start in the third quarter of 2013. Installation of a temporary support system and excavation for the construction of Lei Tung Station Entrance A at Main Street, Ap Lei Chau is completed and excavation of the pedestrian adit is in progress. The blasting of Ap Lei Chau main tunnel is progressing towards South Horizons Station and Lei Tung Station concurrently. The excavation of Ap Lei Chau main tunnel has reached Lei Tung Station while blasting for the station construction commenced in February 2013.

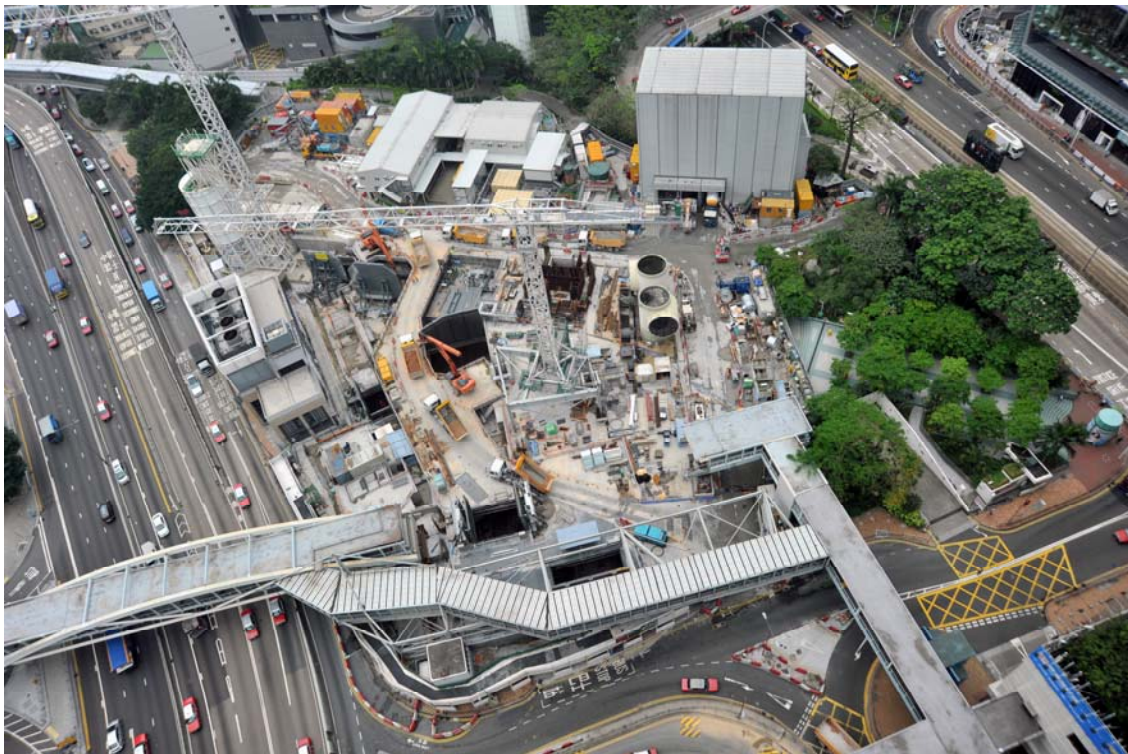
工程進度 Progress Achieved

地區 Location	工程進展 Progress
海怡半島段 South Horizons	<ul style="list-style-type: none"> 在近海怡半島23A座和25座的部份利南道及怡南路的臨時馬路鋼板工程已完成，而挖掘及管綫工程則繼續進行。在近海怡半島20座和33A座對出的臨時馬路鋼板安裝工程仍在進行中，預計於2013年第三季完成。 海怡路路底正進行管綫遷移及B出口地基工程。鴨脷洲邨的沉箱擋土牆改造工程已經大致完成。怡南路的天橋地基工程現正進行中及預計於2013年年底完成。 利南道的水管遷移工程已經完成。位於玉桂山的機房大樓工地平整工程繼續進行，永久斜坡鞏固工程現正進行中。 Temporary road-deck installation along the section of Lee Nam Road and Yi Nam Road near Blocks 23A and 25, South Horizons has been completed while excavation and utility work are in progress. Temporary road-deck installation works near Blocks 20 and 33A are in progress and are expected to be completed in the third quarter of 2013. Utility works under South Horizons Drive and the foundation works for Entrance B are in progress. Caisson wall modification works at Ap Lei Chau Estate are substantially completed. Foundation works for the footbridge at Yi Nam Road are in progress and are expected to be completed by the end of 2013. Water mains diversion at Lee Nam Road is completed. Site formation works for the end plant building at Yuk Kwai Shan is in progress. Permanent slope stabilization work is in progress.

金鐘段 Admiralty Section

車站結構工程及爆破工程

Construction of Station Structure and Blasting Works



MTR Corporation

2013/6/25

Page 9



金鐘段(香港公園) Admiralty Section (Hong Kong Park)

豎井及隧道爆破工程

Blasting Works for the Shaft and Tunnel



MTR Corporation

2013/6/25

Page 10



南風道工地 Nam Fung Road Work Site

隧道爆破工程及高架隧道結構建造工程

Tunnel Blasting and Superstructure Construction Works of the Elevated Tunnel



MTR Corporation

2013/6/25

Page 11



南風隧道 Nam Fung Tunnel

隧道挖掘及隧道壁工程 Tunnel Excavation and Permanent Lining Works



MTR Corporation

2013/6/25

Page 12



香港仔隧道入口 Aberdeen Tunnel Entrance

隔音屏障安裝工程現正進行

Noise Barrier Installation Work in Progress



MTR Corporation

2013/6/25

Page 13



海洋公園段 Ocean Park Section

車站結構建造工程 Construction Works of Station Structure



MTR Corporation

2013/6/25

Page 14



海洋公園段 Ocean Park Section

高架橋橋墩結構及橋面吊裝工程現正進行
Viaduct Piers and Erection Works in Progress



MTR Corporation

2013/6/25

Page 15



黃竹坑段 Wong Chuk Hang Section

警校道附近的明渠工程 Nullah Works near Police School Road



MTR Corporation

2013/6/25

Page 16



黃竹坑段 Wong Chuk Hang Section

車站結構建造工程 Construction Works of Station Structure



MTR Corporation

2013/6/25

Page 17



黃竹坑段 Wong Chuk Hang Section

高架橋隔音屏障工程 Noise Barrier Construction at Viaduct Section



MTR Corporation

2013/6/25

Page 18



黃竹坑段 Wong Chuk Hang Section

黃竹坑車廠建造工程 Construction Works of Wong Chuk Hang Depot



MTR Corporation

2013/6/25

Page 19



香港仔海峽 Aberdeen Channel

高架橋縫接工程

Mid Span Closure Construction of the Viaduct Section



MTR Corporation

2013/6/25

Page 20



利東段 Lei Tung Section

隧道結構明挖回填工程 Cut and Cover Tunnel Box Structure works



MTR Corporation

2013/6/25

Page 21



利東段 Lei Tung Section

利東站A出口 Entrance A of Lei Tung Station



MTR Corporation

2013/6/25

Page 22



利東段 Lei Tung Section

利東站B出口挖掘、臨時支撐安裝及地下管綫改道工程

Excavation, Installation of Temporary Support System and Associated Utilities Diversion Works for Entrance B of Lei Tung Station



MTR Corporation

2013/6/25

Page 23



海怡半島段 South Horizons Section

挖掘及管綫工程 Excavation and Utility Works



MTR Corporation

2013/6/25

Page 24



海怡半島段 South Horizons Section

臨時馬路鋼板安裝工程

Installation of Temporary Road Deck Installation



MTR Corporation

2013/6/25

Page 25



海怡半島段 South Horizons Section

玉桂山明山爆破工程 Open Blast for Yuk Kwai Shan



MTR Corporation

2013/6/25

Page 26



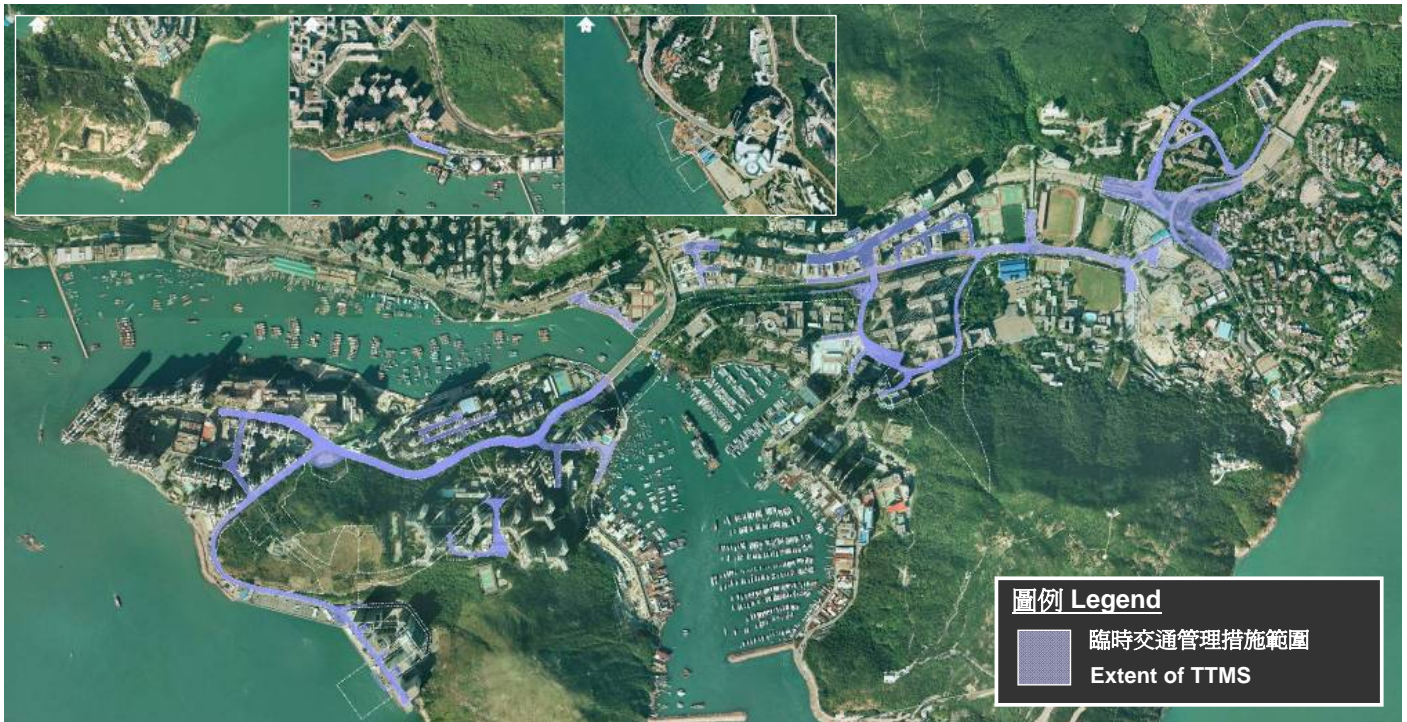


2. 臨時交通管理措施 Temporary Traffic Management Scheme

臨時交通管理措施

Temporary Traffic Management Scheme

臨時交通管理措施範圍如下 The extent of Temporary Traffic Management Scheme (TTMS):



MTR Corporation

2013/6/25

Page 29



臨時交通改道措施

Temporary Traffic Management Scheme

相關路段 Concerned Roads	預計安排 Proposed Arrangements	現時進度 Status
南風徑 Nam Fung Path	<ul style="list-style-type: none"> 南風徑近迴旋處將在星期一至五的夜間時段及星期六的日間時段將間歇性改為單綫雙程行車，以進行隔音屏障安裝工程，有關安排將由2013年第三季實施。 期間迴旋處將會暫時停用。部份接近工地出入口的行人路改道，會一直維持至2014年第一季，以建造高架隧道結構。 The carriageway at Nam Fung Path near roundabout will be reduced to one-lane two-way traffic intermittently during the night time from Mondays to Fridays and daytime on Saturdays starting from the third quarter of 2013. Roundabout will be temporarily closed during the period. Diversion of a section of the pavement at Nam Fung Path near the site entrance will be maintained until the first quarter of 2014 for the construction of elevated tunnel. 	2013年第三季 Q3 2013
海洋公園道 Ocean Park Road	<ul style="list-style-type: none"> 由海洋公園道迴旋處至海洋公園一段的海洋公園道，將繼續在夜間時段分階段改為單綫雙程行車，以進行高架橋建造工程，預計維持至2013年年底。 The section of Ocean Park Road between Ocean Park Road roundabout and Ocean Park will continue to be reduced to one-lane two-way traffic in phases at night time for viaduct construction work until the end of 2013. 	已實施 Implemented

MTR Corporation

2013/6/25

Page 30



臨時交通改道措施 Temporary Traffic Management Scheme

相關路段 Concerned Roads	預計安排 Proposed Arrangements	現時進度 Status
黃竹坑及明渠一帶 Wong Chuk Hang and Nullah	<ul style="list-style-type: none"> 警校道及香葉道交界的一段警校道、以及南朗山道及香葉道交界的一段南朗山道，已於2012年10月暫時改道，預計維持至2014年上半年。 Temporary diversion of a section of Police School Road at its junction with Heung Yip Road and a section of Nam Long Shan Road at its junction with Heung Yip Road in October 2012 is expected to last until the first half of 2014. 	已實施 Implemented
鴨脷洲徑 Ap Lei Chau Drive	<ul style="list-style-type: none"> 部份鴨脷洲徑路段現正封閉。行人路及行車路將會維持，並在有需要時改道。鴨脷洲橋道及鴨脷洲徑交界之路口已於2012年6月暫時改道，行人及車輛仍可照常通往鴨脷洲徑及利東邨道。此安排將一直實施至2014年年中。 Partial road closure of Ap Lei Chau Drive is being implemented. Vehicular and pedestrian traffic will be maintained and diverted where necessary. The junction of Ap Lei Chau Bridge Road and Ap Lei Chau Drive has been diverted since June 2012. Vehicular and pedestrian access to Ap Lei Chau Drive and Lei Tung Estate Road are maintained. This arrangement will last until mid-2014. 	已實施 Implemented

臨時交通改道措施 Temporary Traffic Management Scheme

相關路段 Concerned Roads	預計安排 Proposed Arrangements	現時進度 Status
利東邨道 Lei Tung Estate Road	<ul style="list-style-type: none"> 利東商場一期對出的部份利東邨道已於2012年9月開始暫時改道，而部份原有巴士總站的巴士綫亦已遷移至新巴士總站。以上安排將維持至2014年年中。為配合地下設施改道工程，原有巴士總站南面的部分道路及行人路繼續於2013年第三季至第四季分階段封閉及改道，而部分巴士站需作臨時遷移。 為配合利東站B出口的豎井爆破工程，位於利東商場一期對出的部份利東邨道需要短暫封路，預計在2013年年中開始實施。由二零一三年第三季至二零一三年第四季只需要作短暫的行人路封閉。 Part of Lei Tung Estate Road adjacent to Phase 1 of Lei Tung Commercial Centre has been temporarily diverted. Some of the bus routes at the existing bus terminus have been temporarily relocated to the new bus terminus starting from September 2012. This arrangement will last until mid-2014. Part of the carriageway and footpath at the southern side of original bus terminus will continue to be closed and diverted in stages for utilities diversion works from the third quarter of 2013 to the fourth quarter of 2013. Part of Lei Tung Estate Road adjacent to Phase 1 of Lei Tung Commercial Centre will be temporarily closed for shaft blasting works for construction of Lei Tung Station Entrance B starting from mid-2013. Only pavement closure will be needed starting from the third quarter 2013 to the fourth quarter 2013. 	已實施 Implemented

臨時交通改道措施

Temporary Traffic Management Scheme

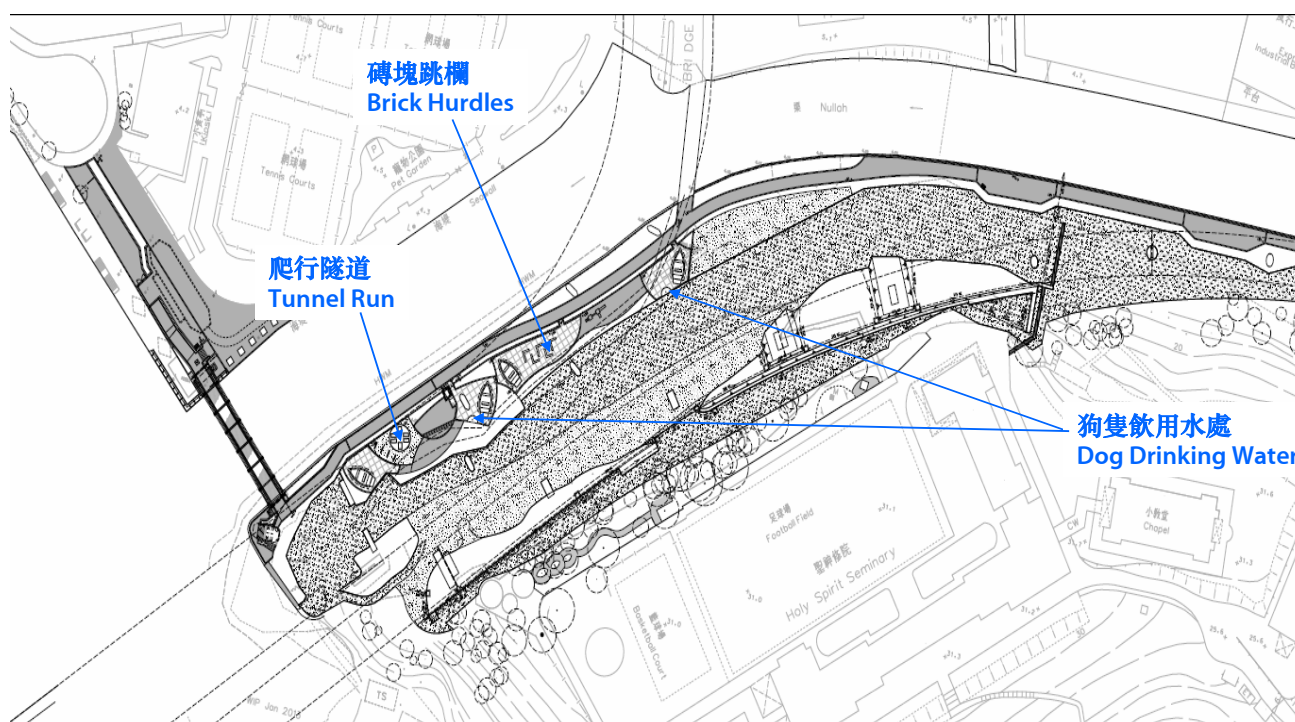
相關路段 Concerned Roads	預計安排 Proposed Arrangements	現時進度 Status
海怡半島 South Horizons	<ul style="list-style-type: none">怡南路和利南道交界的路口重開之後，從利南道至海怡東商場之間的一段怡南路，已實施單綫單程行車。在玉桂山的明山爆破工程進行期間封閉部分利南道及怡南路已於2012年8月起實施，預計維持至2013年年底。為配合海怡半島站A出口的行人天橋的建造工程，鴨脷洲橋道近海怡寶血小學需要分階段暫時封閉，其中一條行車綫需要日間時段實施單綫雙程行車，預計在2013年第三季進行。After re-opening of the junction of Lee Nam Road and Yi Nam Road, one-way one-lane traffic has been implemented at the section of Yi Nam Road between Lee Nam Road and Marina Square East Centre. Temporary road closure of part of Lee Nam Road and Yi Nam Road has been implemented for open blast at Yuk Kwai Shan since August 2012 and will last until the end of 2013.For the footbridge construction near Entrance A of South Horizons Station, Ap Lei Chau Bridge Road near Precious Blood Primary School will be temporarily closed in stages with one of the traffic lanes closed during the daytime for one-lane two-way traffic starting from the third quarter of 2013.	已實施 2013年第三季 Implemented Q3 2013



3. 附有寵物設施的公園設計

Design of Park with Pet Facilities

主要特點 Main Features of the Park



4. 爆破工程 Blasting Works

南港島綫爆破工程 SIL(E) Blasting works



2013/6/25

Page 37



5. 社區聯絡 Community Liaison



傳媒報導 Media Reports

MTR puts noise fears to rest

Winnie Chong

An innovative approach to building a viaduct section at night will mean fewer sleepless nights for residents along the MTR's South Island Line (East), the rail operator said.

For beam-and-winch viaduct erection equipment, being used for the first time in Hong Kong, it is likely to cut down on construction time.

Traditional equipment takes one to two months to set up and needs significant road closures all day long.

The new equipment takes about two weeks to set up and roads can remain open in the daytime.

The line's lead project manager, Mark Cuzner, said the new machines take less time to deliver as well.

The two-kilometer viaduct section will run from the Aberdeen Tunnel toll plaza to Ap Lei Chau, taking in the Ocean Park and Wong Chuk Hang stations.

The precast concrete viaduct deck sections involve 628 segments and are fitted into place using equipment from Italy, which is one-tenth the size of a typical viaduct launching gantry.

Though the total construction time of the viaduct remains the same for both new and old methods, the new equipment negates the need for large-scale or long-term road closures.

"In terms of advantages, I think fundamentally it minimizes disruption. It also takes account of the size and con-



side using the new tech projects, particularly if it is similar.

The seven-kilometer line will connect the southern part of Hong Kong Island to the existing MTR network.

A five-kilometer stretch is being built underground and a two-kilometer span on the viaduct.

Construction, which began in May 2011, is expected to be completed in 2015.

Currently, about 35 percent of the civil engineering work has been completed.

Cuzner also said MTR Corp will complete the project within the budget of HK\$12.6 billion.

He added that the MTRC will con-



Technology keeps MTR line on track

New techniques mean MTR of civil works on South Island east are done

Construction of the new South Island Line (East) is well advanced, with the viaduct section being built on the South Island. The new techniques used for the viaduct construction are expected to speed up the project.

The new techniques used for the viaduct construction are expected to speed up the project.

The new techniques used for the viaduct construction are expected to speed up the project.

The new techniques used for the viaduct construction are expected to speed up the project.

The new techniques used for the viaduct construction are expected to speed up the project.

The new techniques used for the viaduct construction are expected to speed up the project.



中(左):英文虎報 Centre (Left): The Standard

中(右):南華早報 Centre (Right): South China Morning Post

中下:NOW電視 Centre (Bottom): NOW TV

左:成報 Left: Sing Pao

傳媒 Media

-18份報紙
18 newspapers

-4間電子傳媒
4 TV stations

-3間電台
3 radio stations

港鐵新吊裝機 慳工三個月



興建南港島線 封路日數減半

港鐵公司表示，新吊裝機可節省三個月工時，減少封路日數。

港鐵公司表示，新吊裝機可節省三個月工時，減少封路日數。

港鐵公司表示，新吊裝機可節省三個月工時，減少封路日數。

港鐵公司表示，新吊裝機可節省三個月工時，減少封路日數。

港鐵公司表示，新吊裝機可節省三個月工時，減少封路日數。

港鐵公司表示，新吊裝機可節省三個月工時，減少封路日數。

港鐵公司表示，新吊裝機可節省三個月工時，減少封路日數。

港鐵公司表示，新吊裝機可節省三個月工時，減少封路日數。

港鐵公司表示，新吊裝機可節省三個月工時，減少封路日數。

港鐵公司表示，新吊裝機可節省三個月工時，減少封路日數。

港鐵公司表示，新吊裝機可節省三個月工時，減少封路日數。

港鐵公司表示，新吊裝機可節省三個月工時，減少封路日數。

港鐵公司表示，新吊裝機可節省三個月工時，減少封路日數。

港鐵公司表示，新吊裝機可節省三個月工時，減少封路日數。

港鐵公司表示，新吊裝機可節省三個月工時，減少封路日數。

港鐵公司表示，新吊裝機可節省三個月工時，減少封路日數。

港鐵公司表示，新吊裝機可節省三個月工時，減少封路日數。

港鐵公司表示，新吊裝機可節省三個月工時，減少封路日數。

港鐵公司表示，新吊裝機可節省三個月工時，減少封路日數。

港鐵公司表示，新吊裝機可節省三個月工時，減少封路日數。

港鐵公司表示，新吊裝機可節省三個月工時，減少封路日數。

港鐵公司表示，新吊裝機可節省三個月工時，減少封路日數。

港鐵公司表示，新吊裝機可節省三個月工時，減少封路日數。

港鐵公司表示，新吊裝機可節省三個月工時，減少封路日數。

港鐵公司表示，新吊裝機可節省三個月工時，減少封路日數。

港鐵公司表示，新吊裝機可節省三個月工時，減少封路日數。

港鐵公司表示，新吊裝機可節省三個月工時，減少封路日數。

港鐵公司表示，新吊裝機可節省三個月工時，減少封路日數。

港鐵公司表示，新吊裝機可節省三個月工時，減少封路日數。

港鐵公司表示，新吊裝機可節省三個月工時，減少封路日數。

港鐵公司表示，新吊裝機可節省三個月工時，減少封路日數。

南港島線工程引入橫樑吊裝機



節省工程逾三個月

另外，橫樑吊裝機所用的機件較小，代表佔用路面亦較少，以南風隧道至海洋公園其中一段工程為例，兩架機對下的封路時間便可減少至五個鐘以上。

港鐵指出，橫樑吊裝機可同時在不同位置施工，機架及現場興建的橋樑工程可同時進行，也會令整體建造時間較使用傳統建造方法為短。

南港島線(東段)是中環鐵路系統，由金鐘至灣仔半島，共有五個車站，並包括港島5公里的隧道段和約2公里的橋樑段，建造工程2011年5月展開，預計2015年竣工。

MTR Corporation

香港仔龍舟競渡大賽2013 Aberdeen Dragon Boat Race 2013



MTR Corporation

2013/6/25

Page 40



第十一次南港島綫(東段)社區聯絡小組會議 The eleventh round of Community Liaison Group (CLG) meetings

- 第十一次社區聯絡小組會議將於2013年9月-10月舉行。相關資料將上載至南港島綫(東段)網頁。
<http://www.mtr-southislandline.hk/tc/public-consultation/community-liaison-group.html>
- The eleventh round of Community Liaison Group (CLG) meetings will be held in September and October 2013. Relevant information will be made available for the public at the SIL(E) website.
<http://www.mtr-southislandline.hk/en/public-consultation/community-liaison-group.html>



MTR Corporation



2013/6/25

Page 41



謝謝
Thank You

