



南港島綫 (東段)

南區區議會

South Island Line (East)

Southern District Council

15-3-2012

# 南區區議會 Southern District Council

## 議程 Agenda

1. 建造工程進度  
*Works Progress*

2. 臨時交通管理措施  
*Temporary Traffic Management Scheme*

3. 爆破工程  
*Blasting Works*

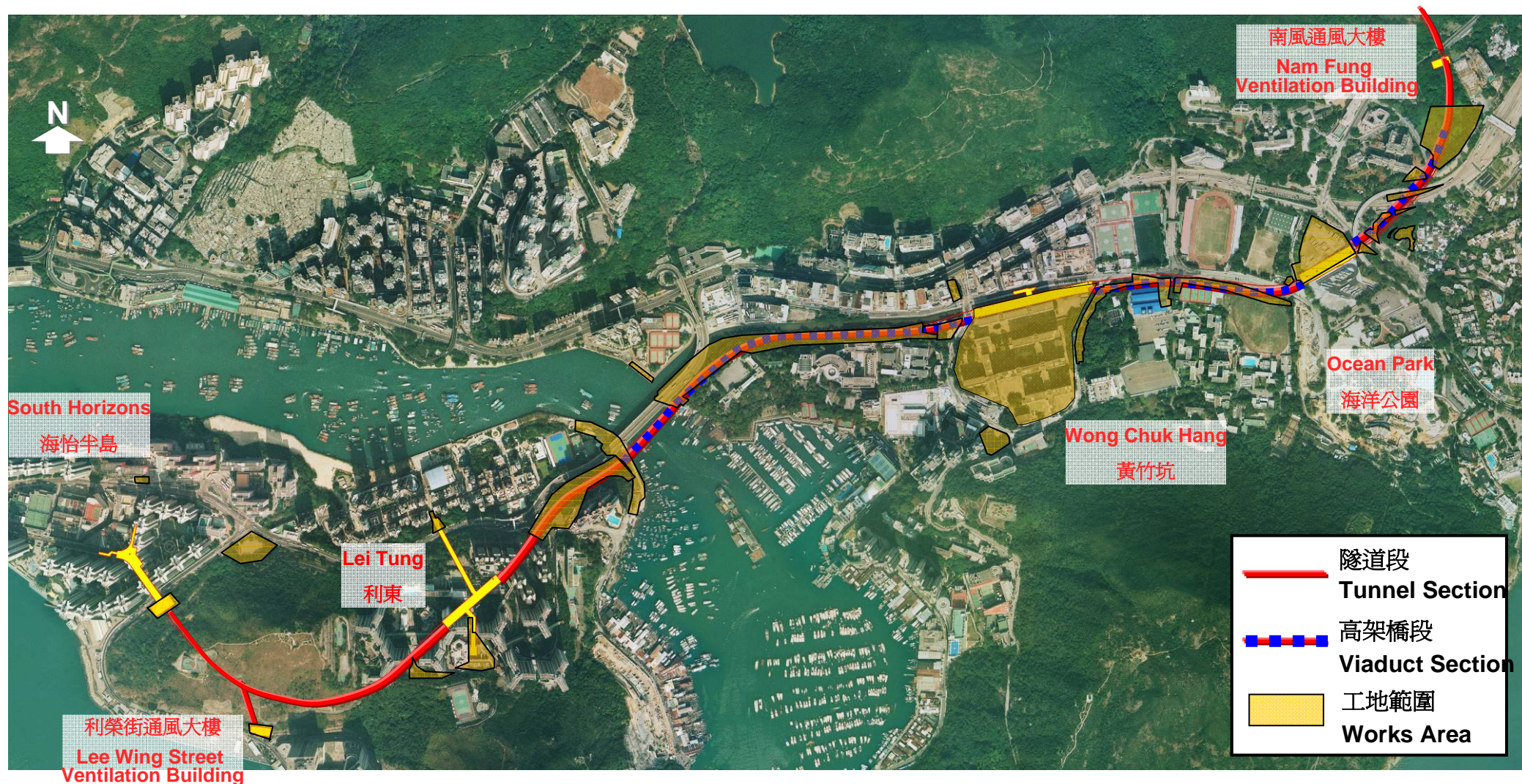
4. 社區聯絡  
*Community Liaison*

# 1. 建造工程進度 Works Progress



# 建造工程進度 *Works Progress*

工地範圍 *Works Area*:





# 金鐘段 *Admiralty*



建造樁柱及地下連續牆及  
*Pile and diaphragm wall construction*



# 南風道工地 *Nam Fung Road Work Site*





# 海洋公園段 *Ocean Park*

建造海洋公園站樁柱及高架橋橋墩  
*Ocean Park Station Piling and  
viaduct pier Construction*



# 黃竹坑段 *Wong Chuk Hang*





# 黃竹坑車廠 *Wong Chuk Hang Depot*

明山爆破工地平整  
*Site Formation by Open Blasting*





# 利東段 *Lei Tung*



挖掘隧道工程  
*Tunnel Excavation works*



# 海怡半島段 *South Horizon*



管樁安裝工程  
*Pipe piling works*

## 2. 臨時交通管理措施

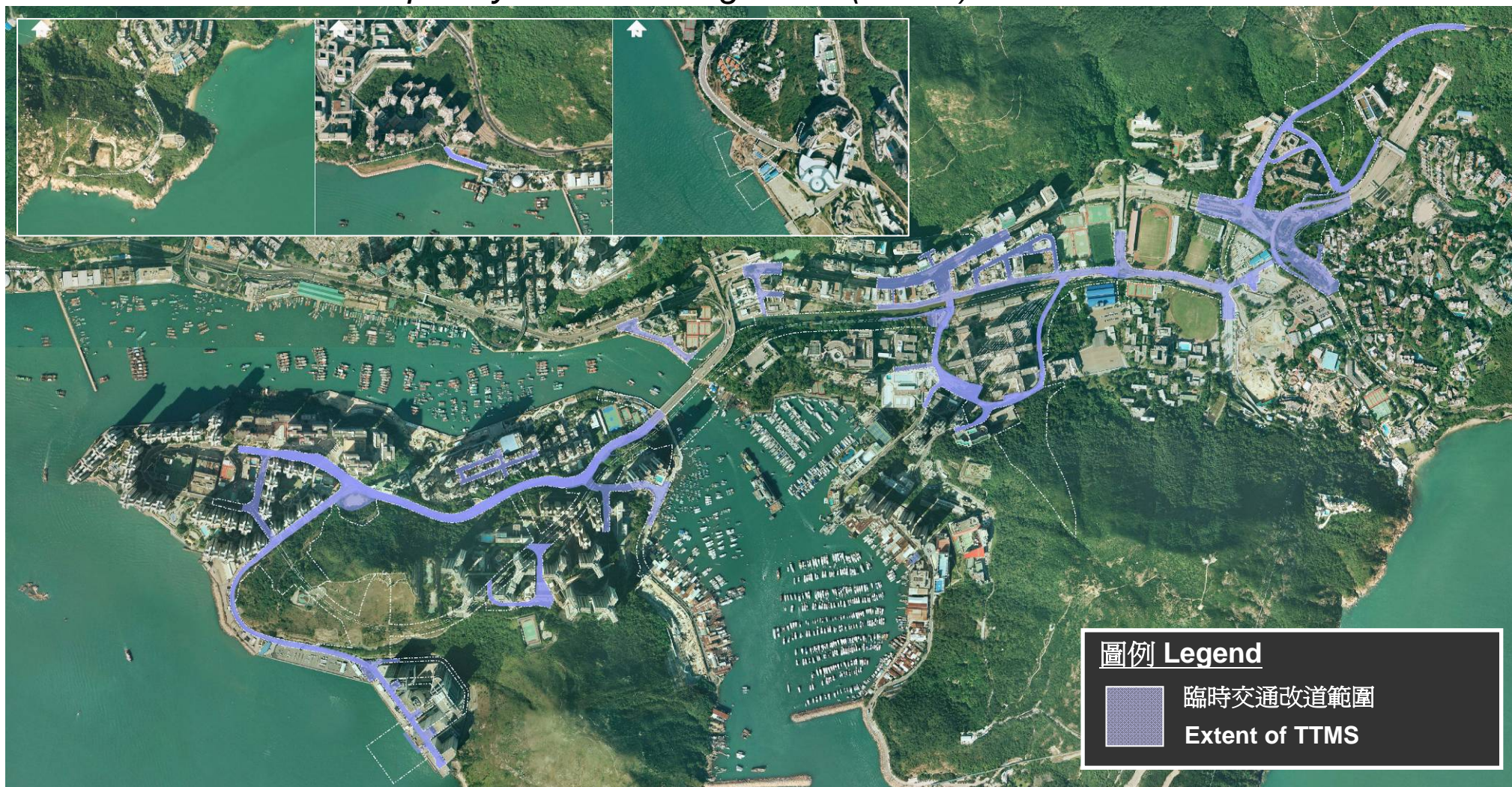
### Temporary Traffic Management Scheme



## 臨時交通改道措施 Temporary Traffic Management Scheme

臨時交通改道措施範圍如下

*The extent of Temporary Traffic Management (TTMS):*





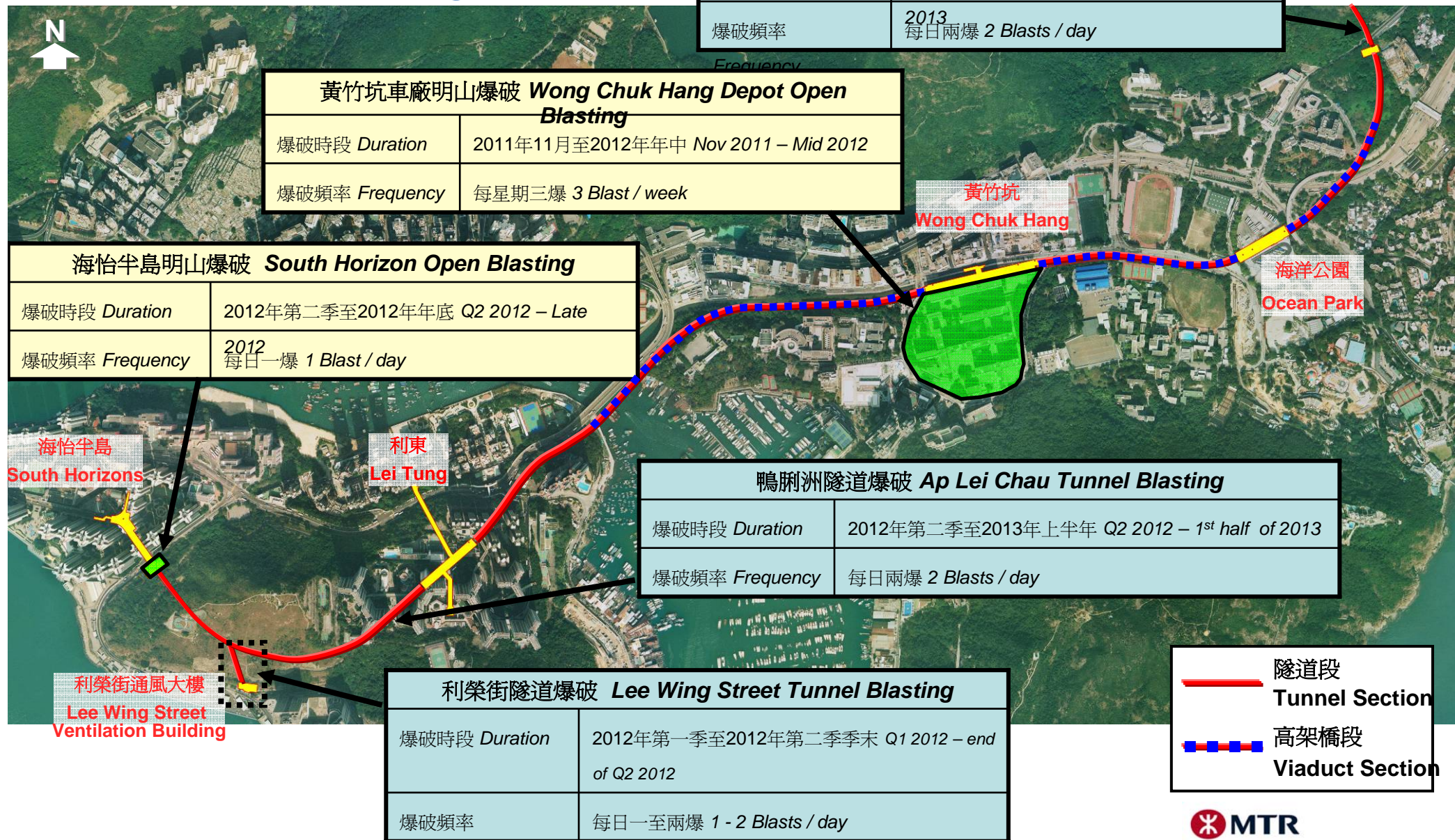
# 臨時交通改道措施 Temporary Traffic Management Scheme

影響路段 Affected Roads	預計安排 Proposed Arrangements
南朗山道 Nam Long Shan Road	由2012年第三季至2013年，由香葉道及南朗山道交界的南朗山道，將會暫時向東遷移。 Starting from Q3 2012 to 2013, a portion of Nam Long Shan Road near the junction with Heung Yip Road will be temporarily shifted eastward.
警校道 Police School Road	由2012年第三季至2013年，由警校道及香葉道交界的一段警校道，將會暫時向東遷移。 Starting from Q3 2012 to 2013, a portion of Police School Road near the junction with Heung Yip Road will be temporarily shifted eastward.
香葉道 Heung Yip Road	香葉道與業發街的第一及第二個交界處的一段路段，已於2012年二月尾試行臨時全線封閉一星期進行對交通影响的實地評估。港鐵將向地盤聯絡小組申請將該路段封閉約8個月，以進行鋪設地下公用設施工程。 A portion of Heung Yip Road between the 1st and 2nd junctions with Yip Fat Street is temporarily closed for 1 week from End Feb 2012 as trial run for on-site traffic impact assessment. MTR will apply for 8 months road closure through the Site Liaison Group to facilitate the underground utilities works.
鴨脷洲徑 Ap Lei Chau Drive	由2012年中開始，鴨脷洲橋道及鴨脷洲徑交界之路口將臨時遷至接近前海面傳道會小學。相應路口將設置臨時交通燈。 Starting from mid 2012, the junction of Apleichau Bridge Road and Ap Lei Chau Drive would be modified so that Ap Lei Chau Drive will be diverted towards the site of ex-Harbour Mission School. Signalized junctions will be in place to cope with the changes in TTMs to ensure safety.
利東邨道 Lei Tung Estate Road	部份現有巴士總站將作分階段遷移至位於利東邨東興樓對出的重置巴士總站。 Part of the facilities at the existing bus terminus will be relocated by phases due to underground utility diversion for the construction of the station entrance outside Lei Tung Commercial Centre.
利南道、怡南路及海怡路 Lee Nam Road, Yi Nam Road & South Horizons Drive	建造海怡半島站的工程主要集中在怡南路、利南道和海怡路進行。有關的臨時交通安排將會分階段實施。巴士總站仍正常運作。但部份巴士和專線小巴的行車路線需作出更改。工程期間將提供臨時行人路和過路設施。 Construction of the South Horizons station box will be conducted mainly within Yi Nam Road, Lee Nam Road and South Horizons Drive. Associated TTMs will be implemented along these roads in phases. Bus terminus operation will be maintained with some of the bus and GMB routes adjusted. Pedestrian crossings and footpaths will be maintained to ensure road users' safety.



### 3. 爆破工程 Blasting Works

# 南港島綫爆破工程 SIL(E) Blasting works





## 4. 社區聯絡

Community Liaison

# 社區聯絡小組進展

## *Community Liaison Group Progress*

- 已展開了第五次會議

The 5<sup>th</sup> CLG meetings were held

社區聯絡小組 <i>Community Liaison Group</i>	會議日期 <i>Date of meeting</i>
金鐘段 Admiralty	13 / 2 / 2012
鋼綫灣段 Telegraph Bay	27 / 2 / 2012
黃竹坑段 Wong Chuk Hang	20 / 2 / 2012
海洋公園及春坎山段 Ocean Park Section & Chung Hom Shan	22 / 2 / 2012
利東段 Lei Tung	2 / 3 / 2012
海怡半島段 South Horizons	28 / 2 / 2012



# 積極參與社區活動

## *Engaging in the community*

- 造訪東華三院賽馬會復康中心 (2011年9月)及安貧小姊妹會聖瑪利安老院 (2011年12月)



- 「飲水思源－東江行」活動 (2011年12月)





謝謝  
Thank You