



南港島綫 (東段)

南區區議會

South Island Line (East)

Southern District Council

19-7-2012

南區區議會 Southern District Council

議程 Agenda

1. 建造工程進度
Works Progress
2. 臨時交通管理措施
Temporary Traffic Management Scheme
3. 爆破工程
Blasting Works
4. 社區聯絡
Community Liaison

1. 建造工程進度

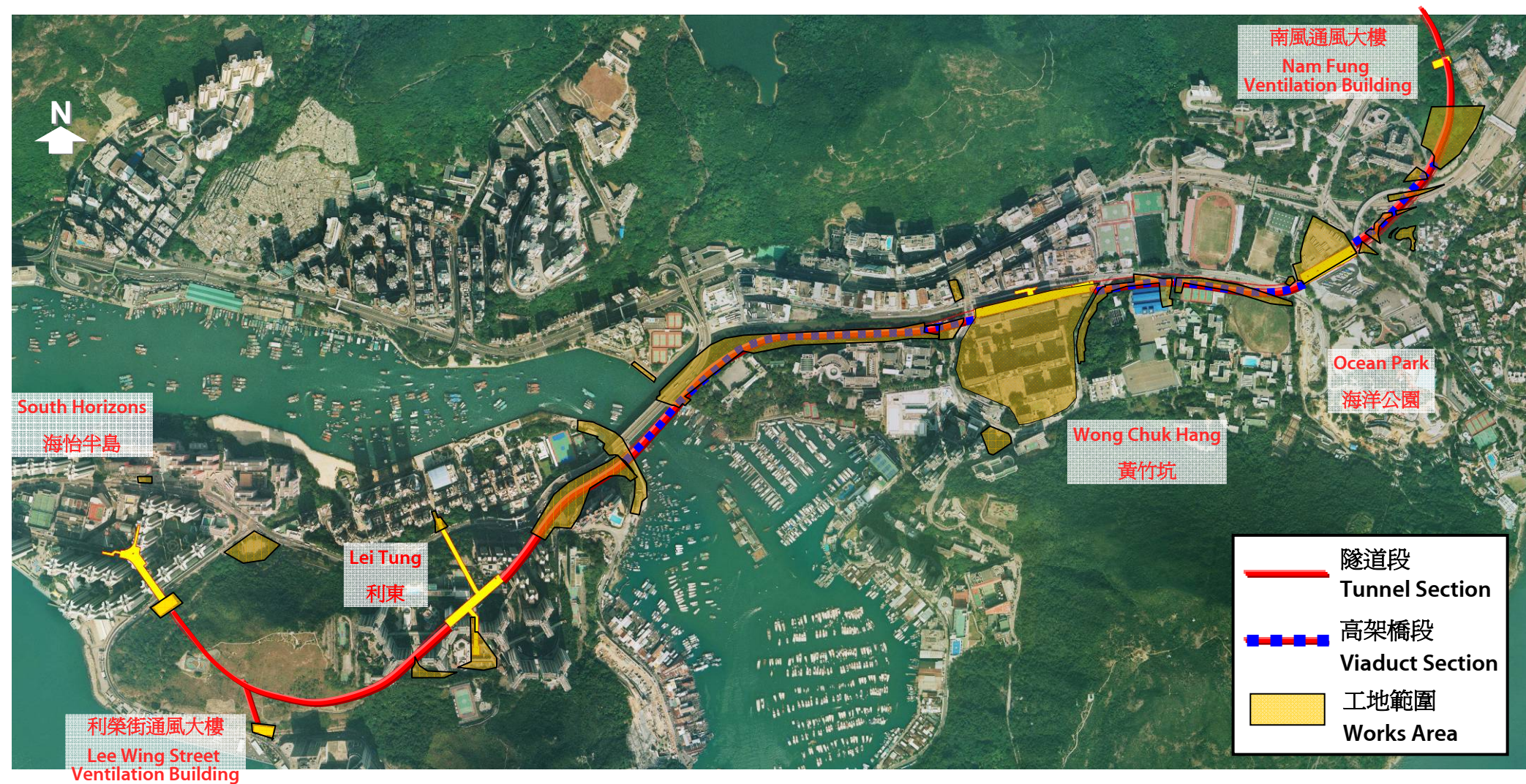
Works Progress

工程進度理想 Smooth Progress Achieved

地區 Location	工程進展 Progress
金鐘段 Admiralty	<p>夏慤花園工地正進行樁柱工程及豎井挖掘工程以配合金鐘站擴建。在樂禮街接駁至中信行人天橋的臨時行人天橋工程，已於5月展開。香港公園工地通風豎井的挖掘工程亦已展開。</p> <p>Piling works and the excavation of a shaft for the expansion of Admiralty station are now on going at the Harcourt Garden site. Construction of the temporary footbridge connecting to the CITIC Tower was completed in mid 2012. Excavation of the ventilation shaft at Hong Kong Park also commenced in June 2012.</p>
南風道隧道 Nam Fung Tunnel	<p>隧道入口機械挖掘工程正在進行。</p> <p>Excavation works for the tunnel portal are in progress to prepare for the tunnel blasting.</p>
海洋公園段 Ocean Park	<p>香港仔隧道入口高架橋段的所有高架橋橋墩經已於今年五月完成，而橋樑預製組件吊裝工程亦已於六月展開。</p> <p>Pier construction works of the viaduct section near the Aberdeen Tunnel entrance were completed in May 2012, followed by the viaduct segment erection works which have already started since June 2012.</p>
黃竹坑段 Wong Chuk Hang	<p>明渠平台建造工程會在雨季繼續，期間明渠水流將不受影響。</p> <p>Construction of the nullah deck will continue in the wet season while the water flow will be maintained.</p>
利東段 Lei Tung	<p>於前海面傳道會小學舊址的隧道結構明挖回填工程正在進行。</p> <p>Construction of the cut-and-cover tunnel box structure at the ex-Harbour Mission School Site is in progress.</p>
海怡半島段 South Horizons	<p>利榮街隧道的爆破工程已完成，鴨脷洲隧道的爆破工程已於2012年6月份展開。在海怡半島第三、四期對出的怡南路，正分階段進行臨時樁柱及馬路鋼板安裝工程。</p> <p>Tunnel blasting for the Lee Wing Street adit was completed in June 2012. The blasting for Ap Lei Chau Main Tunnel was commenced in June 2012. Temporary piling works for the construction of the station box and the temporary road-deck installation on the section of Yi Nam Road between Phase III and IV of South Horizons are being carried out in phases.</p>

建造工程進度 *Works Progress*

工地範圍 *Works Area*:



金鐘段 Admiralty

樁柱工程及豎井挖掘工程
Piling / Shaft Excavation



金鐘段(香港公園) Admiralty (Hong Kong Park site)



建造豎井康樂文化事務署設施地及下管線工程
Construction of LCSD facilities and underground utilities diversion

南風道工地 Nam Fung Road Work Site

工地平整及建造橋墩
Site Formation and Pier Construction



香港仔隧道入口 Aberdeen Tunnel Entrance



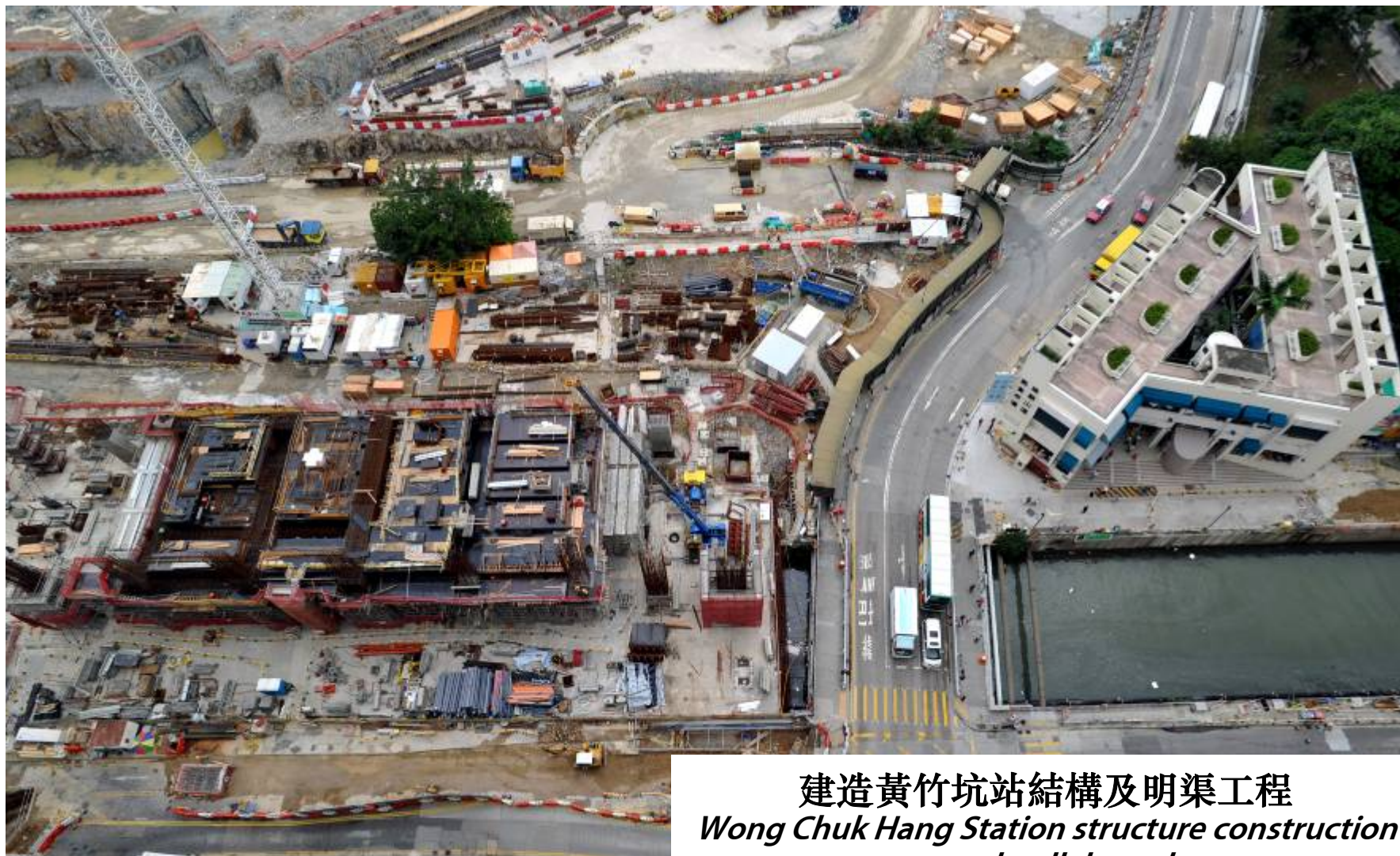
高架橋預製組件吊裝工程正式展開
*Commencement of viaduct
segment erection*

香港仔海峽 Aberdeen Channel

香港仔海峽橋建造工程
*Aberdeen Channel Bridge
construction*



黃竹坑段 Wong Chuk Hang



建造黃竹坑站結構及明渠工程
*Wong Chuk Hang Station structure construction
and nullah work*

利東段 Lei Tung



隧道挖掘及建造工程
*Tunnel Excavation and
structure construction
works*

利東段 Lei Tung



利東站B出口相關地下管
線改道工程
*Utility diversion works for
Entrance B of Lei Tung
Station*

海怡半島段 South Horizons

管線遷移工程
Utilities diversion works



玉桂山 *Yuk Kwai Shan*

管樁安裝工程
Pipe piling works

土地平整工程

Site formation

水管遷移工程

Water main diversion



鴨脷洲隧道 Ap Lei Chau Tunnel

隧道爆破工程
Tunnel Blasting



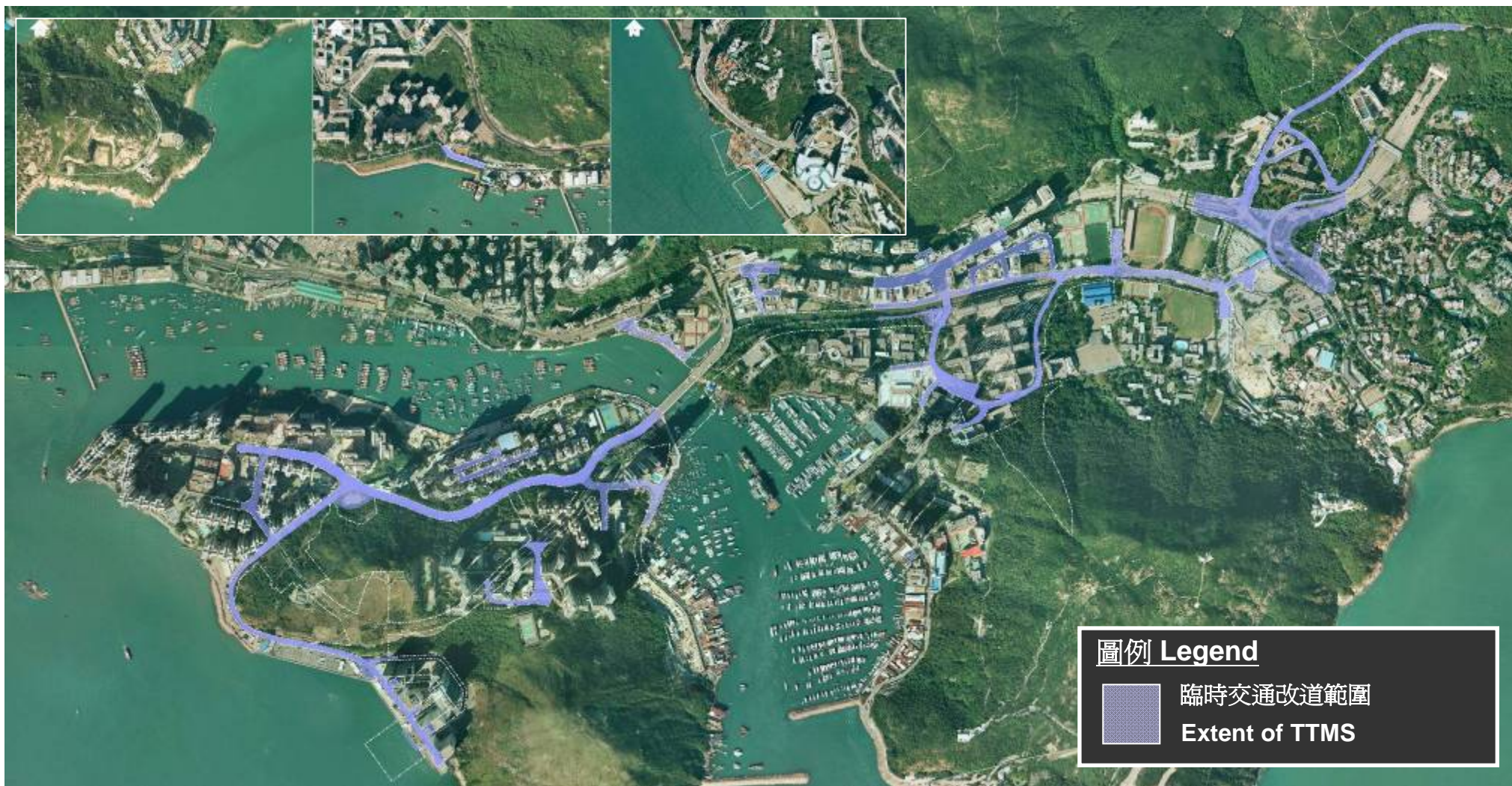
2. 臨時交通管理措施

Temporary Traffic Management Scheme

臨時交通改道措施

Temporary Traffic Management Scheme

臨時交通改道措施範圍如下: *The extent of Temporary Traffic Management (TTMS):*



臨時交通改道措施 Temporary Traffic Management Scheme

相關路段 Concerned Roads	預計安排 Proposed Arrangements	現時進度 Status
近香港仔隧道收費廣場 Near Aberdeen Tunnel Toll Plaza	由2012年第三季至2013年，鄰近香港仔隧道收費廣場的黃竹坑道路段，將於夜間時段間歇實施臨時交通管理措施，以進行高架橋夜間工程。 Starting from Q3 2012 to 2013, TTMSs at Wong Chuk Hang Road in the vicinity of Aberdeen Tunnel Toll Plaza will be implemented at night for viaduct superstructure construction.	2012年第三季 Q3 2012
南朗山道 Nam Long School Road	由2012年第三季至2013年，由香葉道及南朗山道交界的南朗山道，將會暫時向東遷移。 Starting from Q3 2012 to 2013, a section of Nam Long Shan Road near the junction with Heung Yip Road will be temporarily shifted eastward.	2012年第三季 Q3 2012
警校道 Police School Road	由2012年第三季至2013年，由警校道及香葉道交界的一段警校道，將會暫時向東遷移。 Starting from Q3 2012 to 2013, a section of Police School Road near the junction with Heung Yip Road will be temporarily shifted eastward.	2012年第三季 Q3 2012
香葉道 Heung Yip Road	香葉道與業發街的第一及第二個交界處的一段路段繼續臨時全線封閉，以進行鋪設地下公用設施工程。 Temporary closure of a section of Heung Yip Road between its first and second junctions with Yip Fat Street is ongoing to facilitate the underground utilities works. .	已經實施 Implemented
鴨脷洲徑 Ap Lei Chau Drive	由2012年中開始，鴨脷洲橋道及鴨脷洲徑交界之路口將臨時遷至接近前海面傳道會小學。相應路口將設置安裝交通燈號的行人過路設施。 Starting from mid 2012, the junction of Apleichau Bridge Road and Ap Lei Chau Drive would be diverted towards the site of former Harbour Mission School. Signalized controlled pedestrian crossing facilities will be in place to cope with the changes in TTMs to ensure safety.	2012年第二季 Q2 2012
利東邨道 Lei Tung Estate Road	部份現有巴士總站已遷移至位於利東邨東興樓對出的重置巴士總站以便臨時封閉部分現有巴士站作車站出入口興建及相關工程。因應鴨脷洲B出口的豎井爆破工程，短暫封路預計由2012年第四季至2013年上半年在部份利東邨道實施。 With the relocation of part of the facilities to the new bus terminus, part of the existing bus terminus is temporarily closed for the construction of the station entrance and associated works. Temporary road closure at Lei Tung Estate Road for shaft blasting at Entrance B will be implemented from 4th quarter of 2012 to first half of 2013.	正在實施 Ongoing

臨時交通改道措施 Temporary Traffic Management Scheme

相關路段 Concerned Roads	預計安排 Proposed Arrangements	現時進度 Status
利南道、怡南路 及海怡路 Lee Nam Road, Yi Nam Road & South Horizons Drive	<p>建造海怡半島站的工程主要集中在怡南路、利南道、海怡路和鴨脷洲橋道進行。有關的臨時交通安排將會分階段實施。巴士總站仍正常運作。但部份巴士和專線小巴的行車路線需作出更改。工程期間將提供臨時行人路和過路設施。因應玉桂山通風及機房大樓明山爆破工程, 短暫封路預計在部份利南道實施, 直至2013年上半年。</p> <p>Construction of the South Horizons station will be conducted mainly within Yi Nam Road, Lee Nam Road, South Horizons Drive and Apleichau Bridge Road. Associated TTMs will be implemented along these roads in phases. Bus terminus operation will be maintained with some of the bus and GMB routes adjusted. Pedestrian crossings and footpaths will be maintained to ensure road users' safety. Temporary road closure at Lee Nam Road for open cast blasting of ventilation and plant building at Yuk Kwai Shan has been implemented until first half of 2013.</p>	正在實施 Ongoing

3. 爆破工程 Blasting Works

南港島綫爆破工程 SIL(E) Blasting works

南風隧道爆破 <i>Nam Fung Tunnel Blasting</i>	
爆破時段 <i>Duration</i>	2012年下半年至2013年底 <i>Second half of 2012 – Late 2013</i>
爆破頻率 <i>Frequency</i>	每日兩爆 <i>2 Blasts / day</i>

南風通風大樓
Nam Fung
Ventilation Building

黃竹坑車廠明山爆破 <i>Wong Chuk Hang Depot Open Blasting</i>
已完成 <i>Completed</i>

黃竹坑
Wong Chuk Hang

海洋公園
Ocean Park



海怡半島明山爆破 <i>South Horizon Open Blasting</i>	
爆破時段 <i>Duration</i>	2012年7月至2013年上半年 <i>July 2012 – 1st half of 2013</i>
爆破頻率 <i>Frequency</i>	每日一爆 <i>1 Blast / day</i>

海怡半島
South Horizons

利東
Lei Tung

利東站B出口豎井爆破 <i>Lei Tung Entrance B Shaft blasting</i>	
爆破時段 <i>Duration</i>	2012年Q4至2013年上半年 <i>4th quarter of 2012 – 1st half of 2013</i>
爆破頻率 <i>Frequency</i>	每日一爆 <i>1 Blast / day</i>

鴨脷洲隧道爆破 <i>Ap Lei Chau Tunnel Blasting</i>	
爆破時段 <i>Duration</i>	2012年6月至2013年上半年 <i>June 2012 – 1st half of 2013</i>
爆破頻率 <i>Frequency</i>	每日兩爆 <i>2 Blasts / day</i>

	隧道段 Tunnel Section
	高架橋段 Viaduct Section

4. 社區聯絡

Community Liaison

第六次社區聯絡小組會議

The 6th Community Liaison Group meeting

- 會議已於5月份舉行，相關資料已上載南港島綫(東段)網頁：
- Meetings were held in May. Relevant material available on the SIL(E) website at:
<http://www.mtr-southislandline.hk/tc/public-consultation/consultation-meetings.html>



積極聯繫社區 - (1)

Engaging the community – (1)

- 港鐵公司贊助並組隊參與了南區一年一度的節日盛事－香港仔龍舟競渡大賽2012
The Corporation sponsored the yearly festive– Aberdeen Dragon Boat Race 2012 and the SIL(E) team had taken part in the race



- 6月21日探訪東華三院黃竹坑綜合服務大樓
Visit to the TWGHs Wong Chuk Hang Complex on 21 June



積極聯繫社區 - (2)

Engaging the community – (2)

黃竹坑車廠爆破工程竣工典禮暨慶祝酒會
Wong Chuk Hang Depot Open Blasting Completion Ceremony and Celebration Party



南港島綫（東段）車站設計及 「車站藝術公眾參與計劃」

Station Design of the South Island Line (East) and Public Art Programme

- 港鐵公司於二零一零年三月及六月的「港鐵南港島綫發展計劃專責委員會」曾向議員介紹車站外觀的設計
The design of station exteriors had been presented at SIL Focus Group meetings in March and June 2010
- 現階段車站設計主題及色調已大致落實，港鐵公司將於會議上再介紹各車站內的環境及外觀設計。
Themes of the station design and the selection of colour are being finalized. Presentation on the station interior and exterior design will be made at the Council meeting.
- 港鐵公司將開展「南港島綫(東段)公眾藝術計劃」，以「南區靈感」及「南區匯萃」為主要設計意念，與社區及本地藝術組織合作創作車站藝術
The Corporation will join hands with the local community and art groups to roll out a "South Island Line (East) Public Art Programme" to create artwork for SIL(E) stations under the core themes of "Inspiration of Southern District" and "Integration into Southern District".



謝謝
Thank You