



南港島綫（東段）進度報告 南區區議會 （截至二零一六年十月三十一日）

Progress Report of South Island Line (East)
Southern District Council
(As of 31 October 2016)

二零一六年十一月十七日
17 November 2016

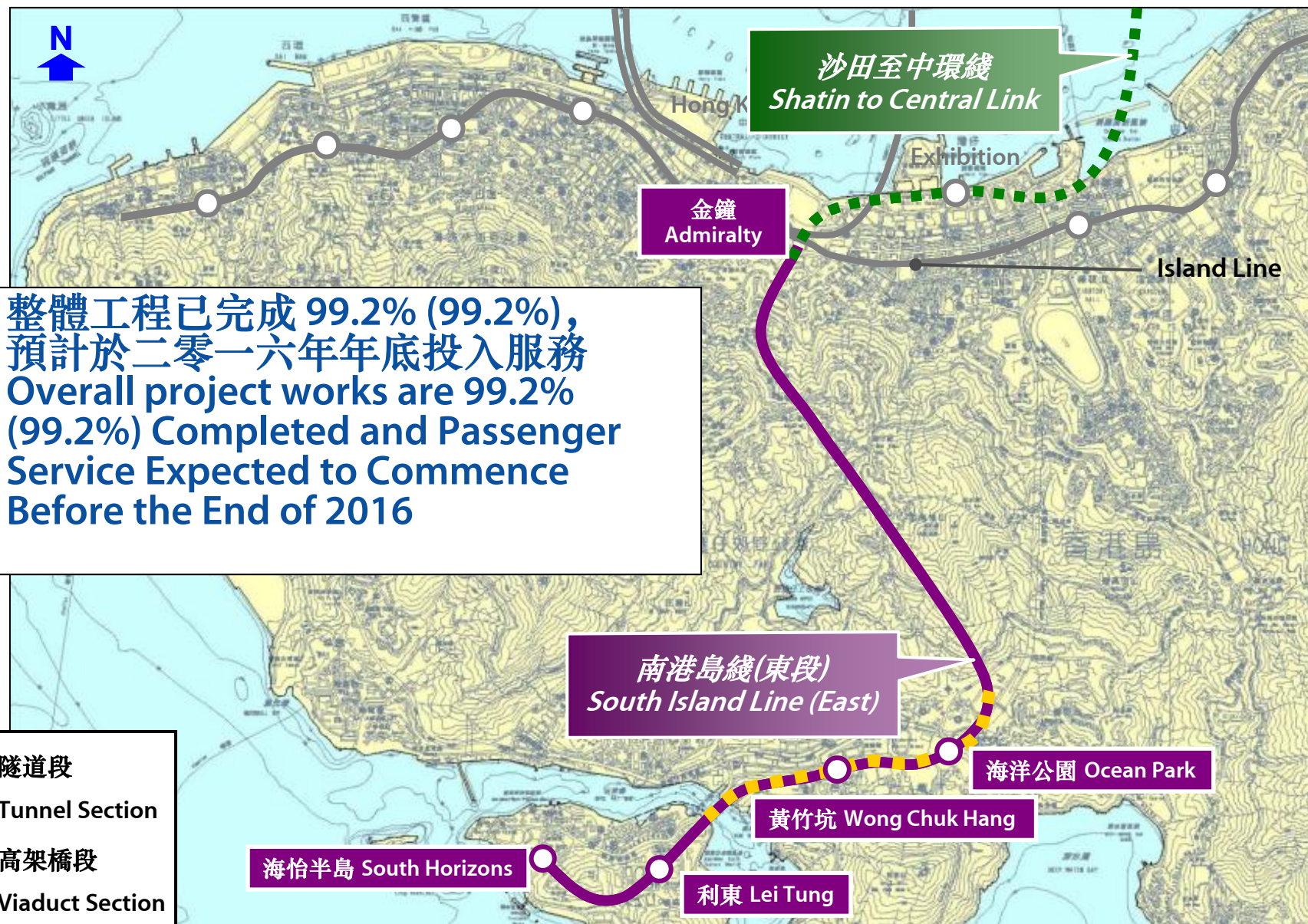
議程 Agenda

1. 建造工程進度
Works Progress
2. 臨時交通管理措施
Temporary Traffic Management Scheme
3. 社區聯絡
Community Liaison



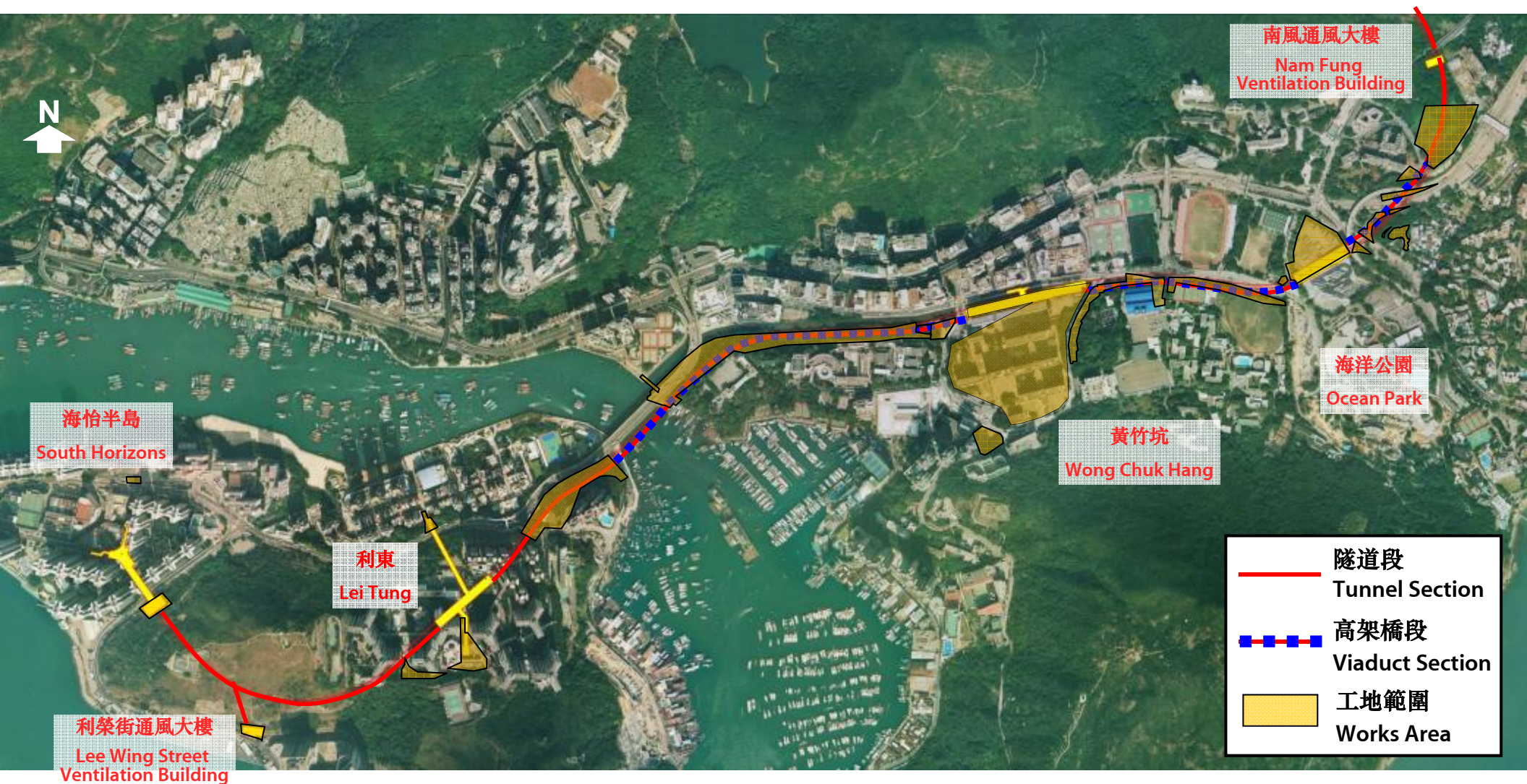
1. 建造工程進度 Works Progress

建造工程進度 Works Progress



建造工程進度 Works Progress

工地範圍 Works Area



金鐘段 Admiralty Section

南港島綫（東段）月台層機電工程大致完成

E&M Works at SIL(E) Platform Level are Substantially Completed



金鐘段 Admiralty Section

沙中綫月台大堂裝修及機電安裝工程大致完成

Fitting-out and E&M Works at Shatin to Central Link Concourse are Substantially Completed



金鐘段（香港公園） Admiralty Section (Hong Kong Park)

香港公園通風大樓已進入試營運階段
Hong Kong Park Ventilation Building Has Entered into Trial Operation Phase



南風道工地 Nam Fung Road Works Site

南風通風大樓已進入試營運階段

The Nam Fung Ventilation Building Has Entered into Trial Operation Phase



海洋公園及黃竹坑段 Ocean Park and Wong Chuk Hang Sections

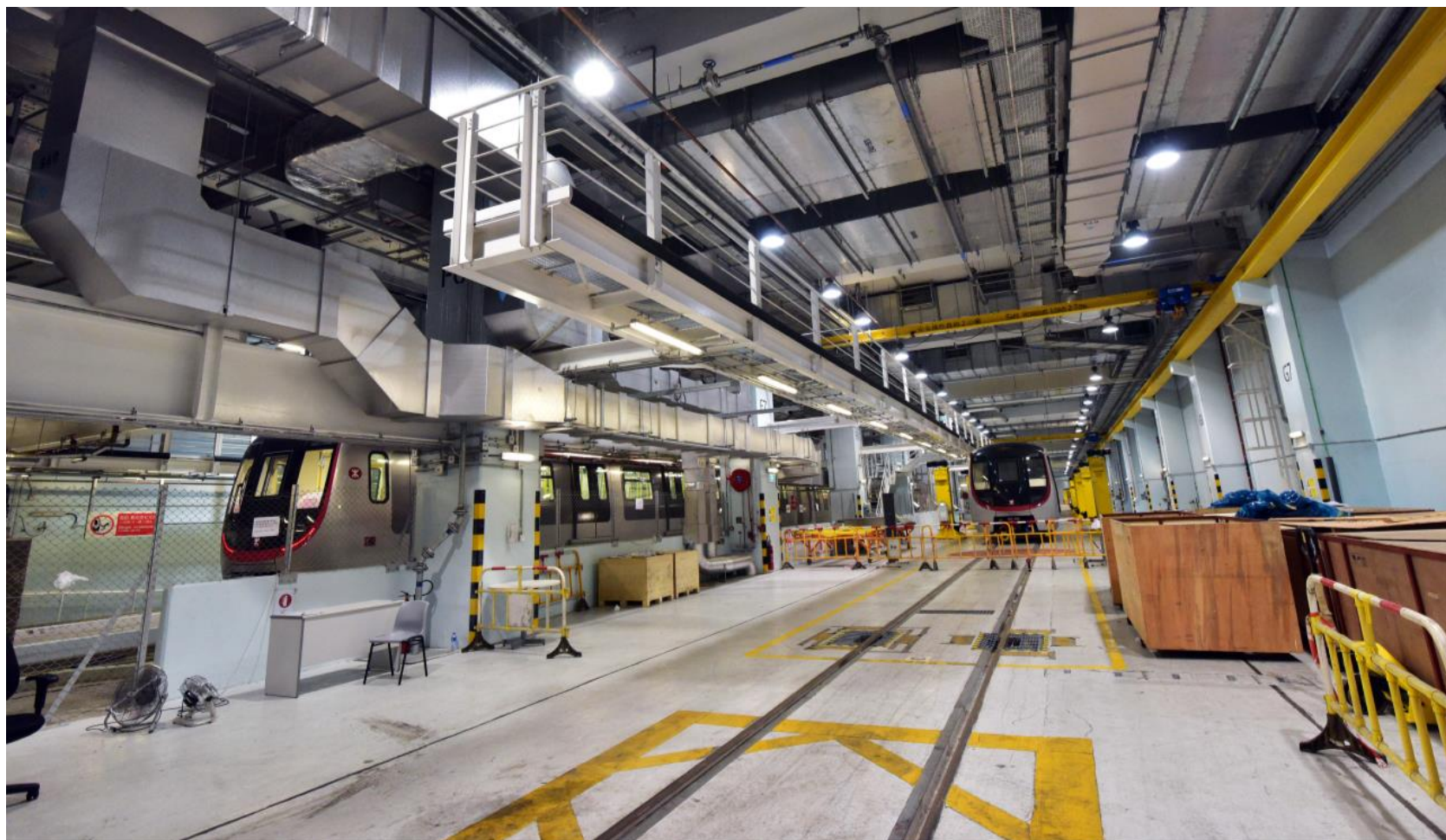
海洋公園及黃竹坑站繼續進行試營運工作
Trial Operation Continues at Ocean Park and Wong Chuk Hang Stations



黃竹坑車廠 Wong Chuk Hang Depot

繼續進行試營運工作

Trial Operation Continues



列車試營運階段

Trial Operation of Train Running

金鐘站至海怡半島站列車試營運工作進行中

Trial Operation of Train Running between Admiralty Station and South Horizons Station in Progress



利東及海怡半島段 Lei Tung and South Horizons Sections

利東及海怡半島站繼續進行試營運工作

Trial Operation Continues at Lei Tung and South Horizons Stations



利東及海怡半島段

Lei Tung and South Horizons Sections

玉桂山機房大樓及利榮街通風大樓已進入試營運階段

The Yuk Kwai Shan End Plant Building and Lee Wing Street Ventilation Building Have Entered into Trial Operation Phase



玉桂山機房大樓
Yuk Kwai Shan End Plant Building



利榮街通風大樓
Lee Wing Street Ventilation Building



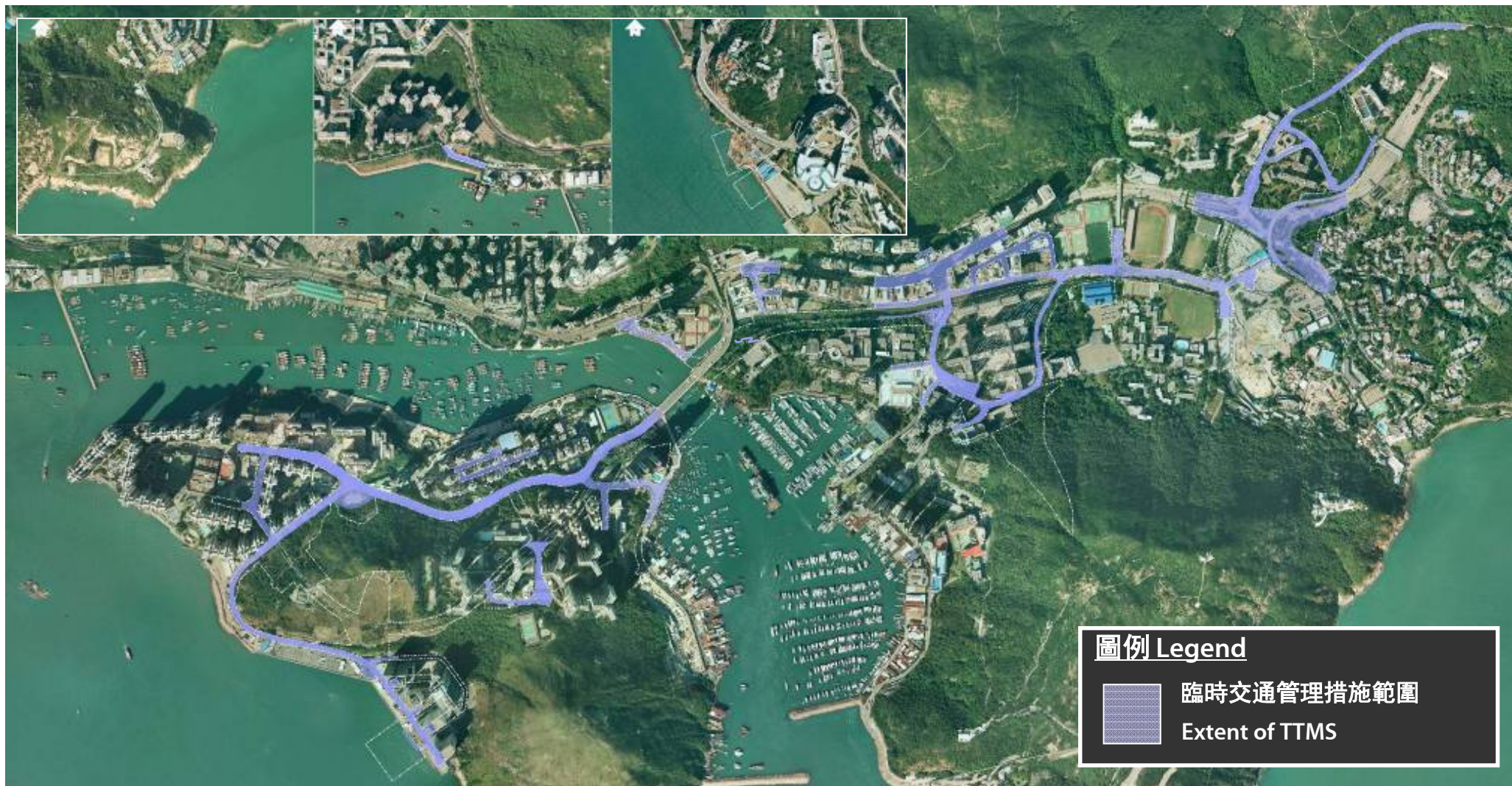
2. 臨時交通管理措施

Temporary Traffic Management Scheme

臨時交通管理措施範圍

Extent of Temporary Traffic Management Scheme (TTMS)

暫時/永久封閉範圍 Areas of Temporary / Permanent Closure





3. 社區聯絡 Community Liaison

南區區議會參觀利東及海怡半島站

Visit of Council Members to Lei Tung and South Horizons Stations





謝謝
Thank You