

# **District Health Centre in Southern District**

**6<sup>th</sup> Meeting of the Southern District Council  
10 September 2020**

# Background

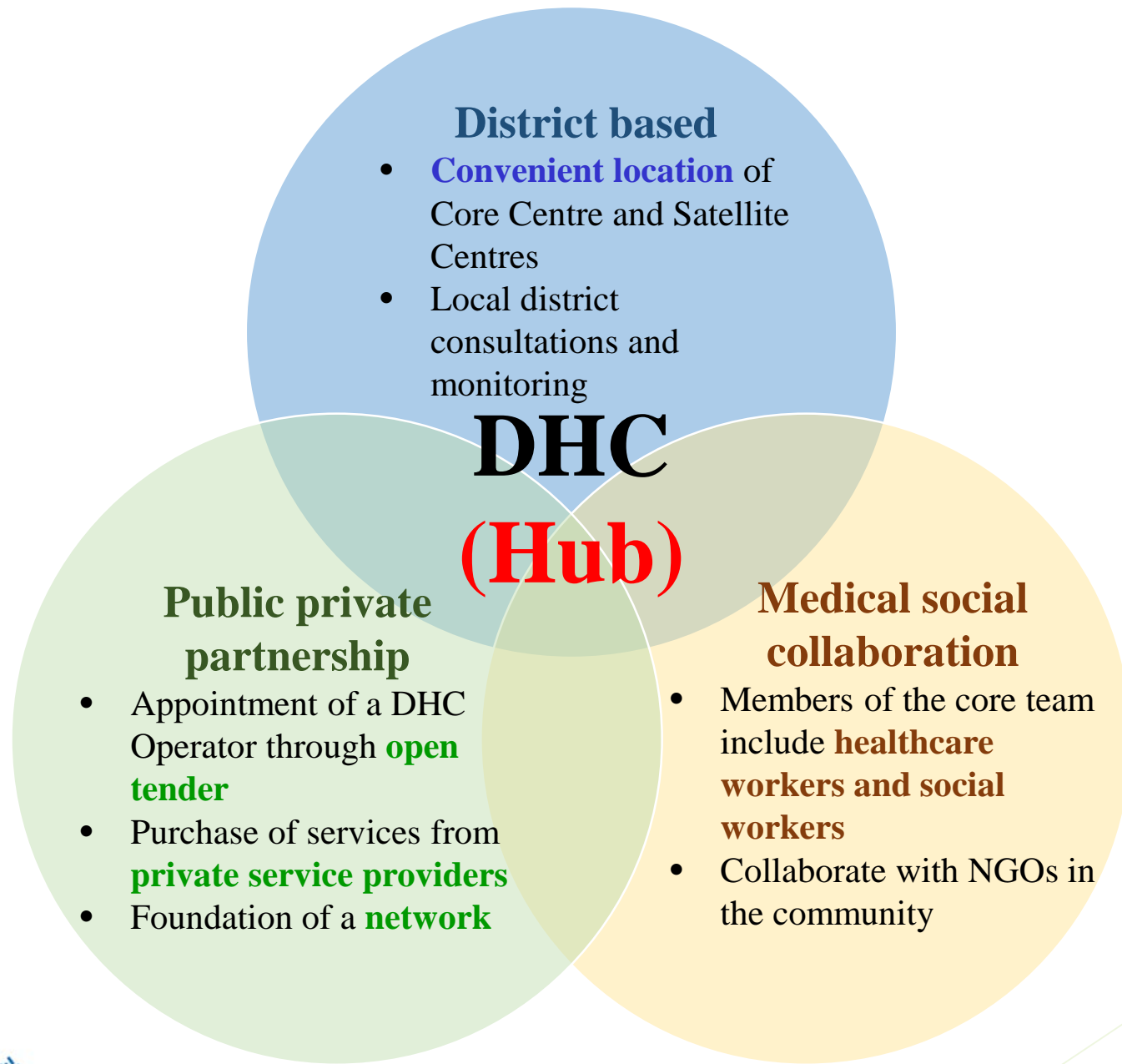
A comprehensive and coordinated primary healthcare system that can attend to the healthcare needs of individuals more conveniently in a community setting is crucial to improving the overall health status of the population and reduce unwarranted admissions and re-admissions.

# Background

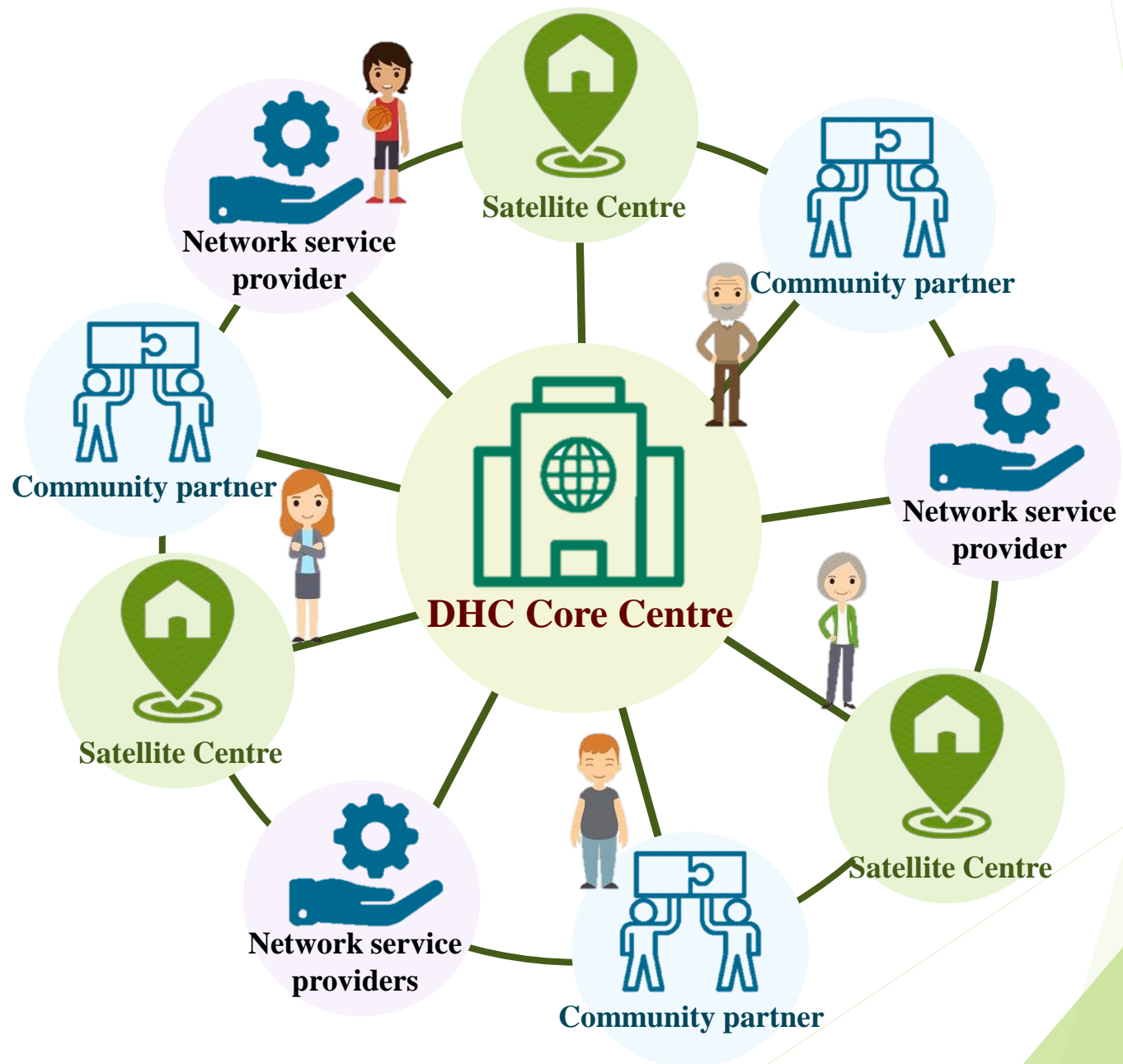
The Government will set up District Health Centres (DHC) in all 18 districts to provide primary healthcare services.

The first DHC in Kwai Tsing District (K&TDHC) has commenced operation in late September 2019.

The Government plans to set up the S-DHC and five other DHCs by mid-2022.



# DHC Hub



# Objectives of Setting Up the DHC

- ▶ Encourage the people establishing a healthy life style
- ▶ Enhance disease prevention
- ▶ Early identification of chronic diseases
- ▶ Properly manage chronic diseases
- ▶ Enhance the self-care capability through community rehabilitation programmes

# Chronic Diseases

Chronic Diseases	Hong Kong (%)	Southern District (%)
1. Obesity and overweight	54.4	52.7
2. Hypertension	28.5	30.7
Undetected but measured hypertension	13.0	14.1
3. Musculoskeletal disease	3.7	3.1
4. Diabetes Mellitus	6.5	7.8
5. Coronary heart disease	2.5	3.1

Source: "FAMILY: Jockey Club Initiative for a Harmonious Society", School of Public Health of The University of Hong Kong (2011 – 2014)

# Health Risk Behaviours

Health Risk Behaviours	Hong Kong (%)	Southern District (%)
1. Low consumption of fruit and vegetables	75.7	71.3
2. Physical inactivity	19.8	14.4
3. Alcohol consumption (occasionally and regularly)	24.6	28.5
4. Ever smoked	16.8	15.0
5. Daily smoking	11.3	9.7

Source: "FAMILY: Jockey Club Initiative for a Harmonious Society", School of Public Health of The University of Hong Kong (2011 – 2014)



# Priority of Chronic Diseases and Risk Factors

- ▶ Hypertension
- ▶ Diabetes Mellitus
- ▶ Overweight / obesity
- ▶ musculoskeletal diseases
- ▶ Lifestyle risk factors such as smoking, alcohol consumption, physical inactivity, unhealthy diet, etc

# Major Services

## Primary Prevention

- ▶ Health promotion, advisory and counselling services
- ▶ Educational programmes

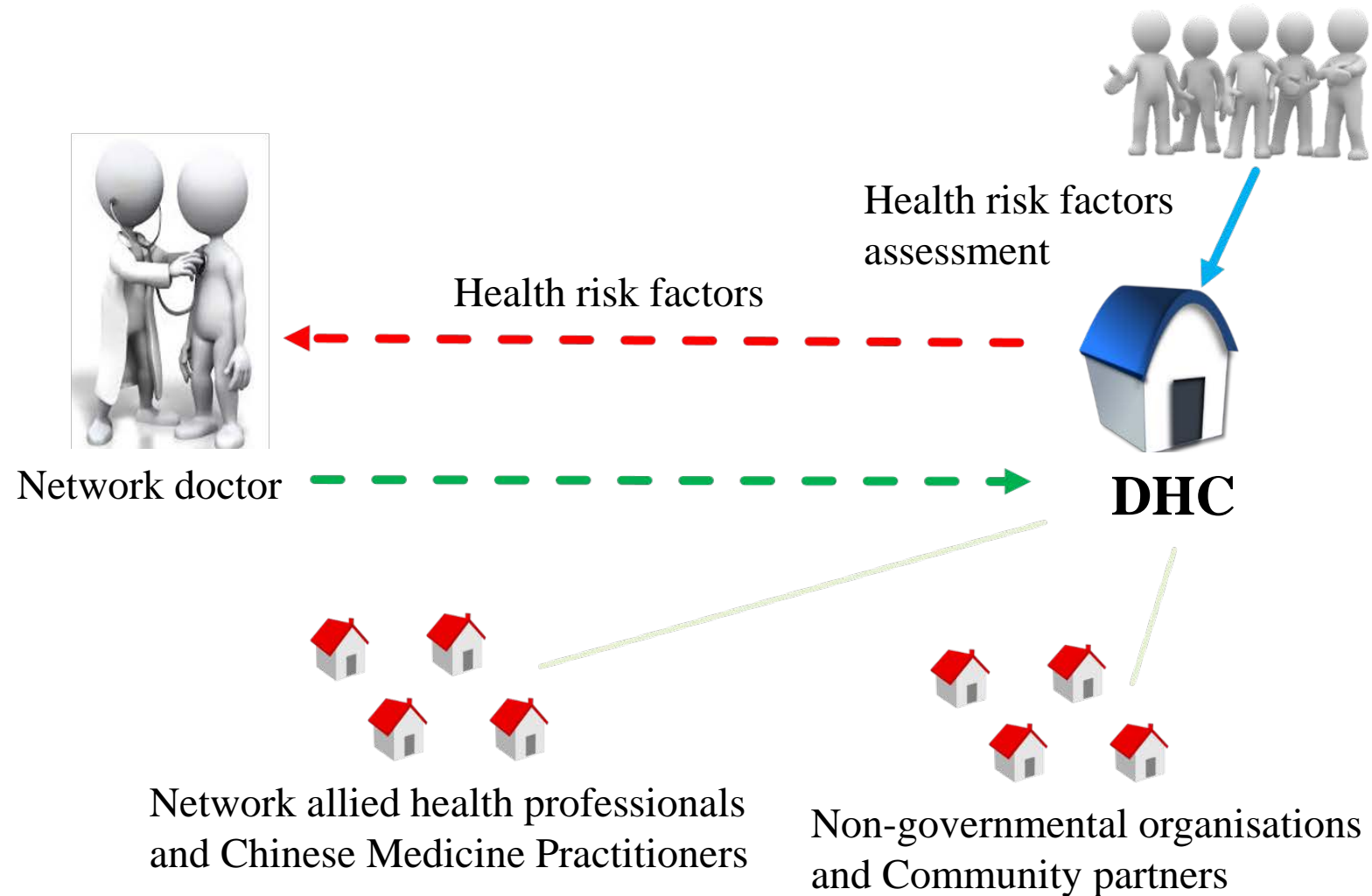
## Secondary Prevention

- ▶ Health risk factors assessment
- ▶ Chronic diseases screening - diabetes mellitus, hypertension

## Tertiary Prevention

- ▶ Chronic disease management - hypertension, diabetes mellitus, musculoskeletal problems (knee pain and low back pain)
- ▶ Community rehabilitation - stroke, hip fracture, post-acute myocardial infarction

# Operational Model



# Core Centre and Satellite Centres

- ▶ Core Centre                      Headquarter
- ▶ Satellite Centres                To set up four Satellite Centres in different locations of the District

# DHC Core Team

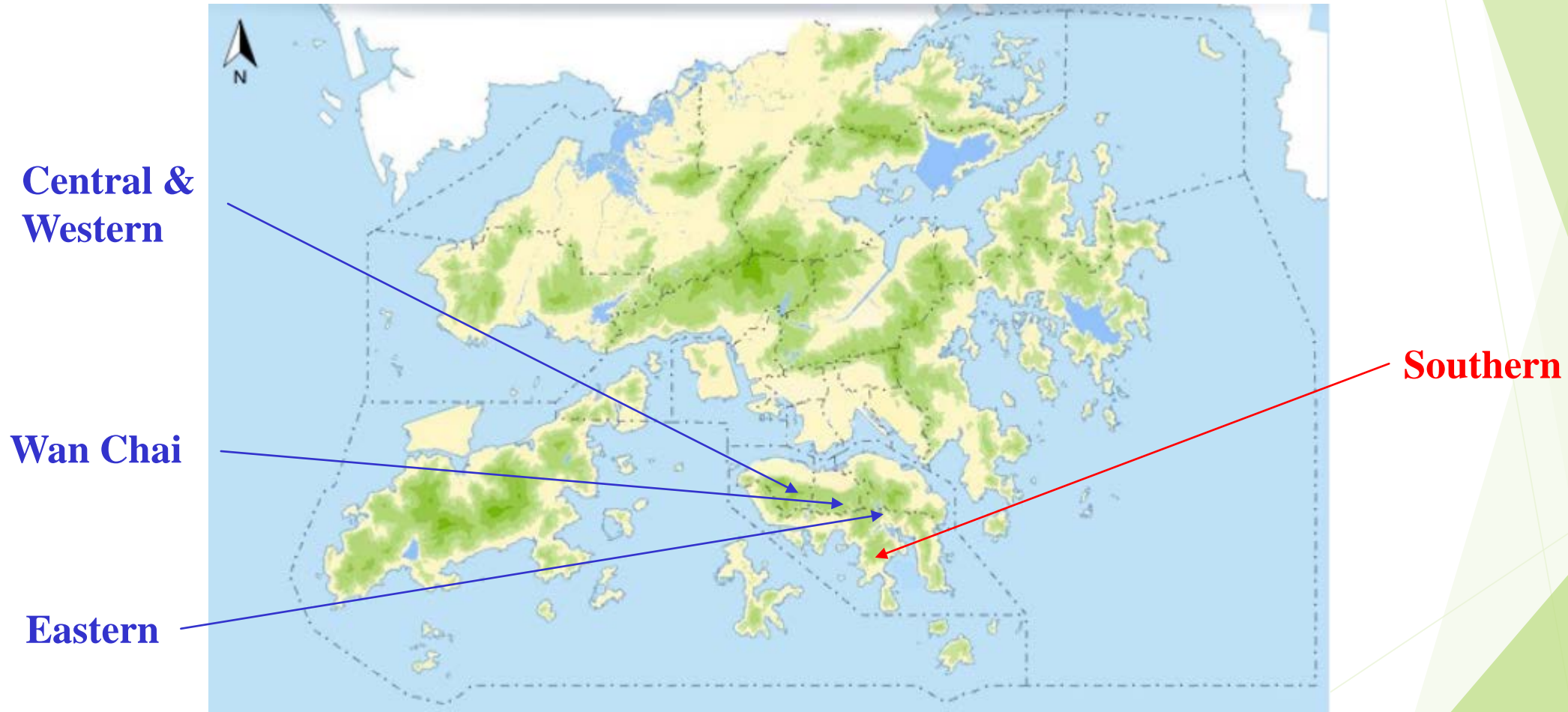
- ▶ Executive Director
- ▶ Chief Care Coordinator\*
- ▶ Care Coordinators\*
- ▶ Physiotherapists
- ▶ Occupational Therapists
- ▶ Pharmacists
- ▶ Dietitians
- ▶ Social Workers
- ▶ Administrative staff

\* Registered nurse

# Network Service Providers

- ▶ Doctors
- ▶ Chinese Medicine Practitioners
- ▶ Physiotherapists
- ▶ Occupational Therapists
- ▶ Dietitians
- ▶ Podiatrists
- ▶ Speech Therapists
- ▶ Optometrists

# Network Service Providers from the Adjacent Districts – better service accessibility for residents \*



# Eligibility

- ▶ **Hong Kong residents**

a holder of the Hong Kong Identity Card issued under the Registration of Persons Ordinance (Cap. 177, the Laws of Hong Kong), except those who obtained their Hong Kong Identity Cards by virtue of a previous permission to land or remain in Hong Kong granted to him and such permission has expired or ceased to be valid; or a child who is a Hong Kong resident and under 11 years of age

- ▶ **Residents of Southern district**

- ▶ **Agree to enrol to electronic Health Record Sharing System (eHRSS)**



# Services - Introduction

		<b>Basic Assessment</b>	<b>Subsidized Medical Consultations</b>		<b>Other Subsidized Allied Health Service Sessions</b>		<b>Telephone Review</b>	<b>Community Support</b>
<b>Primary Prevention</b>		✓						
<b>Chronic Disease Management</b>	<b>Diabetes Mellitus</b>	✓	2 (First year) 1 (Subsequent years)		6 + 1 Medical Laboratory Test (First year) 4 + 1 Medical Laboratory Test (Subsequent years)		✓	✓
	<b>Hypertension</b>	✓	2 (First year) 1 (Subsequent years)		4 + 1 Medical Laboratory Test (First and subsequent years)			
	<b>Low back pain</b>				8			
	<b>Knee pain</b>				12			
<b>Community Rehabilitation</b>	<b>Stroke</b>				11			
	<b>Hip Fracture</b>				8			
	<b>Post-Acute Myocardial Infarction</b>				8			
<b>Free Services</b>			<b>Subsidized</b>	<b>Client Payment</b>	<b>Subsidized</b>	<b>Client Payment</b>		
			<b>\$250</b>	<b>Unlimited</b>	<b>Unlimited</b>	<b>Co-payment</b>		

# Client Co-payment

Services	Co-payment Amount (HKD) Per Session
NMP medical consultation	Basic medical consultation fee minus \$250
Other individual healthcare services	
Physiotherapy	\$150*  *Community Rehabilitation Programme referred by HA \$100
Occupational Therapy	
Dietetic Service	
Speech Therapy	
Podiatry Service	
Optometry Service	
Laboratory Tests	
Chinese Medicine Service	\$150
<ul style="list-style-type: none"> <li>➤ Nurse Counselling and Education</li> <li>➤ Pharmacist Consultation</li> <li>➤ Social Worker Consultation</li> <li>➤ Health Promotion Activities</li> </ul>	\$0

# DHC Management Committee

- ▶ Guide and oversee the DHC Operator
- ▶ Report to the Secretary for Food and Health
  - ▶ Effective and smooth operation of the service network
  - ▶ Provision and development of the professional service standard
  - ▶ Achievement of the objectives set
  - ▶ Regular public consultations, collect the views of the services users and the public on the DHC services
- ▶ Members including Southern District Council representative

# Timetable

- ▶ Establish DHC in Southern District by mid 2022
- ▶ 2020/21 – Identify suitable rental premises and issue tenders

*~ Thank you ~*