

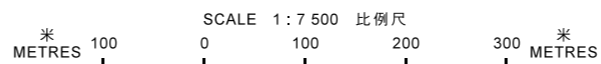
**圖例 LEGEND**

- A 由「露天貯物」及「綠化地帶」改劃為「住宅(甲類)5」土地用途地帶  
TO BE REZONED FROM "OPEN STORAGE" & "GREEN BELT" TO "RESIDENTIAL (GROUP A) 5"
- B 由「康樂」改劃為「住宅(甲類)6」土地用途地帶  
TO BE REZONED FROM "RECREATION" TO "RESIDENTIAL (GROUP A) 6"
- C 由「康樂」改劃為「政府、機構或社區」土地用途地帶  
TO BE REZONED FROM "RECREATION" TO "GOVERNMENT, INSTITUTION OR COMMUNITY"

(界線只作識別用)  
(BOUNDARY FOR IDENTIFICATION PURPOSE ONLY)

**位置圖 LOCATION PLAN**

屏山分區計劃大綱核准圖  
編號 S/YL-PS/18 的擬議修訂  
PROPOSED AMENDMENTS TO  
THE APPROVED PING SHAN  
OUTLINE ZONING PLAN No. S/YL-PS/18



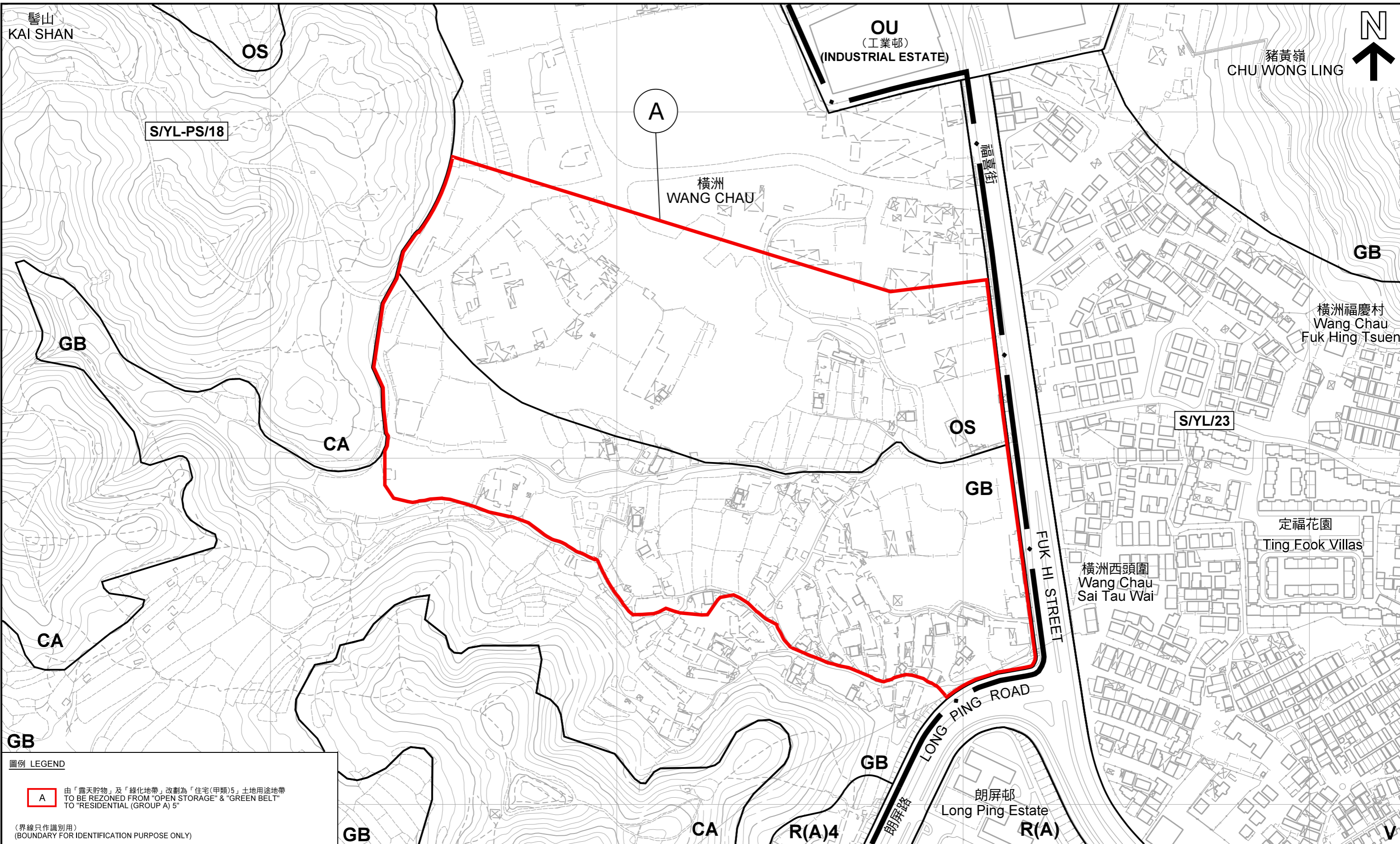
本摘要圖於2020年12月17日擬備，  
所根據的資料為於2018年10月16日  
核准的分區計劃大綱圖編號 S/YL-PS/18  
EXTRACT PLAN PREPARED ON 17.12.2020  
BASED ON OUTLINE ZONING PLAN No.  
S/YL-PS/18 APPROVED ON 16.10.2018

規劃署  
PLANNING DEPARTMENT



參考編號 REFERENCE No.  
M/YLW/20/95

圖 PLAN  
1



**圖例 LEGEND**

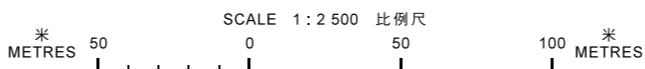
**A** 由「露天貯物」及「綠化地帶」改劃為「住宅(甲類)5」土地用途地帶  
 TO BE REZONED FROM "OPEN STORAGE" & "GREEN BELT" TO "RESIDENTIAL (GROUP A) 5"

(界線只作識別用)  
 (BOUNDARY FOR IDENTIFICATION PURPOSE ONLY)

本摘要圖於2020年12月17日擬備，所根據的資料為測量圖編號 6-NW-4C、6-NW-4D、6-NW-9A 及 6-NW-9B  
 EXTRACT PLAN PREPARED ON 17.12.2020 BASED ON SURVEY SHEETS No. 6-NW-4C, 6-NW-4D, 6-NW-9A & 6-NW-9B

**平面圖 SITE PLAN**

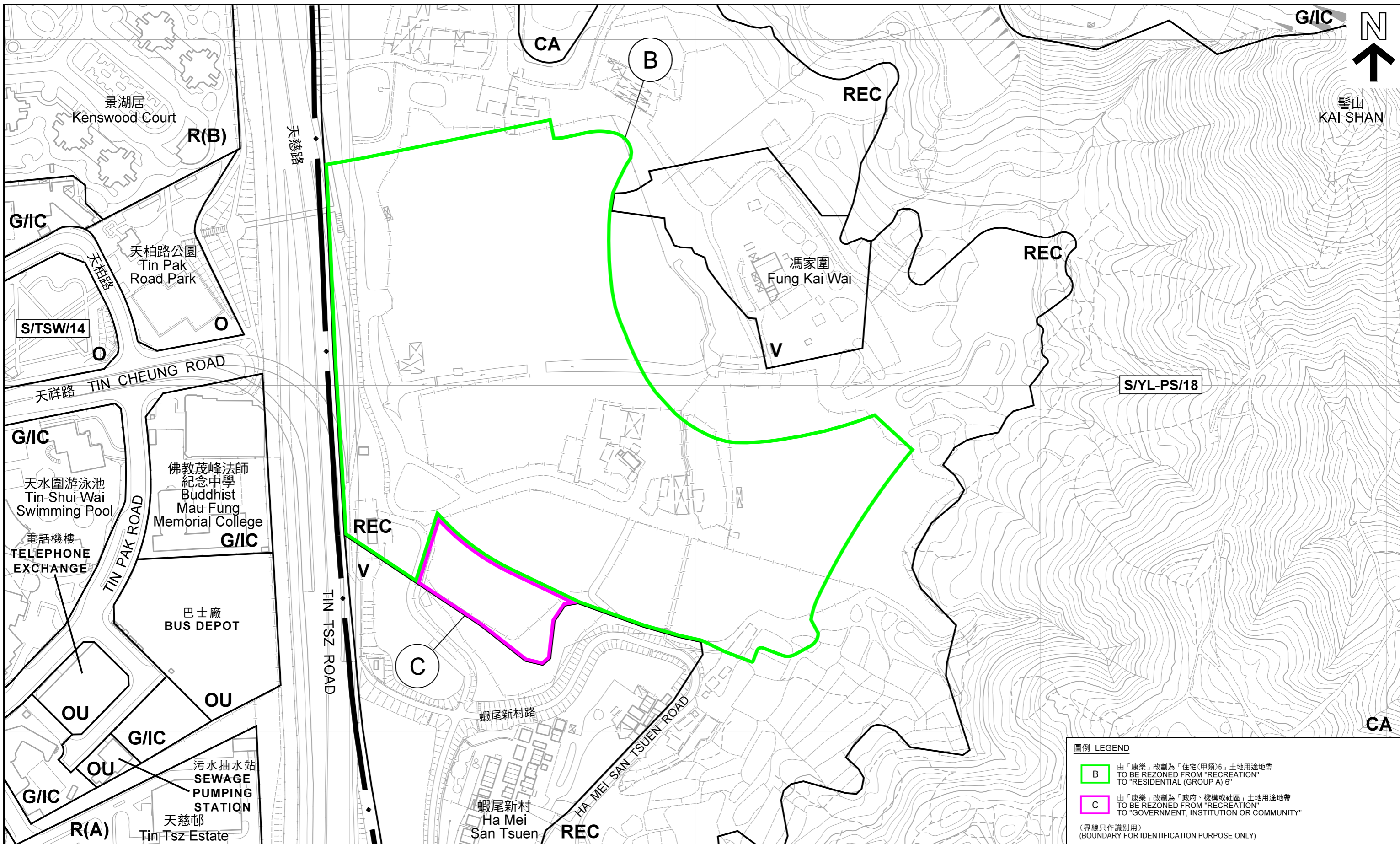
屏山分區計劃大綱核准圖  
 編號 S/YL-PS/18 的擬議修訂  
 PROPOSED AMENDMENTS TO THE APPROVED PING SHAN OUTLINE ZONING PLAN No. S/YL-PS/18



規劃署  
 PLANNING DEPARTMENT

參考編號 REFERENCE No.  
 M/YLW/20/95

圖 PLAN  
 2a



**圖例 LEGEND**

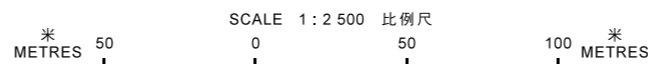
**B** 由「康樂」改劃為「住宅(甲類)6」土地用途地帶  
TO BE REZONED FROM "RECREATION"  
TO "RESIDENTIAL (GROUP A) 6"

**C** 由「康樂」改劃為「政府、機構或社區」土地用途地帶  
TO BE REZONED FROM "RECREATION"  
TO "GOVERNMENT, INSTITUTION OR COMMUNITY"

(界線只作識別用)  
(BOUNDARY FOR IDENTIFICATION PURPOSE ONLY)

**平面圖 SITE PLAN**

屏山分區計劃大綱核准圖  
編號 S/YL-PS/18 的擬議修訂  
PROPOSED AMENDMENTS TO  
THE APPROVED PING SHAN  
OUTLINE ZONING PLAN No. S/YL-PS/18



本摘要圖於2020年12月17日擬備，所根據的資料為測量圖編號 6-NW-3B、6-NW-3D、6-NW-4A 及 6-NW-4C  
EXTRACT PLAN PREPARED ON 17.12.2020  
BASED ON SURVEY SHEETS No.  
6-NW-3B, 6-NW-3D, 6-NW-4A & 6-NW-4C

規劃署  
PLANNING DEPARTMENT



參考編號 REFERENCE No.  
M/YLW/20/95

圖 PLAN  
2b